



**Beaumont-Cherry Valley Water District  
Regular Board Meeting  
August 12, 2020**

Item 10

**MEMORANDUM**

**TO:** Board of Directors  
**FROM:** Dan Jagers, General Manager  
**SUBJECT:** Status Update of Apple Fire

---

**Summary**

On Friday, July 31, 2020, a brush fire broke out along rural Oak Glen Road within the boundaries of the BCVWD and immediately created a significant impact on District operations. As of August 12, the fire had grown to more than 33,000 acres into the communities of Cherry Valley, Banning, Morongo Reservation, Oak Glen, Forest Falls, and the San Bernardino National Forest. The burn scar currently includes sections of District-owned property in Edgar Canyon and Bogart Park. While no homes or structures in the area are currently threatened, hot spots continue to be monitored in Oak Glen and on the Yucaipa ridge near Forest Falls.

As of the morning of August 12, the fire is 60 percent contained and no evacuation warning remain in effect. 24-hour shifts will end as of August 13, and crews will report for day shifts only. A Burned Area Emergency Response (BAER) team will mobilize soon in order to address post-fire stabilization issues, such as loss of vegetation, soil erosion, flooding, habitat disturbance, and cultural resource management.

Staff will be actively monitoring the situation due to the fact that the fire has created a burn area that significantly covers drainage areas tributary to the east branch of Noble Creak (above Bogart Park), which may create future debris flow issues from this area into the Community of Cherry Valley and which could affect certain District facilities.

Staff proposes to purchase K-Rail materials and do work to provide flood protection to the Vineland Tank complex and will discuss further during the Board meeting.

**Fiscal Impact**

Unknown.

**Attachments**

- Brun Area Reflectance Classification (BARC) Map from Riverside County Flood Control
- Exhibit "A" - Beaumont Master Drainage Plan Area
- Exhibit "B" - Apple Fire Affected Area within BCVWD Sphere of Influence
- Exhibit "C" - Apple Fire Affected Area within Various Drainage Boundaries
- Exhibit "D" - Apple Fire Affected Intensity within Various Drainage Boundaries
- Exhibit "E" - Local Area Facilities Map
- Exhibit "F" - Vineland Tank Map
- Exhibit "G" - Edgar Canyon Facilities Map
- Exhibit "H" - Noble SWP Turnout Map and Images
- Exhibit "I" - Mile High Road Images
- Exhibit "J" - Yorba Linda November 2008 Flood Damage Images



# Apple Fire



- RCFC Facilities
- RCFC Proposed Facilities
- Riverside County Line
- Floodplains
- Tribal Lands
- US Forest Service
- Fire Severity (8/11/20)
  - Unburned or Low
  - Low
  - Moderate
  - High

CALIMESA

BEAUMONT

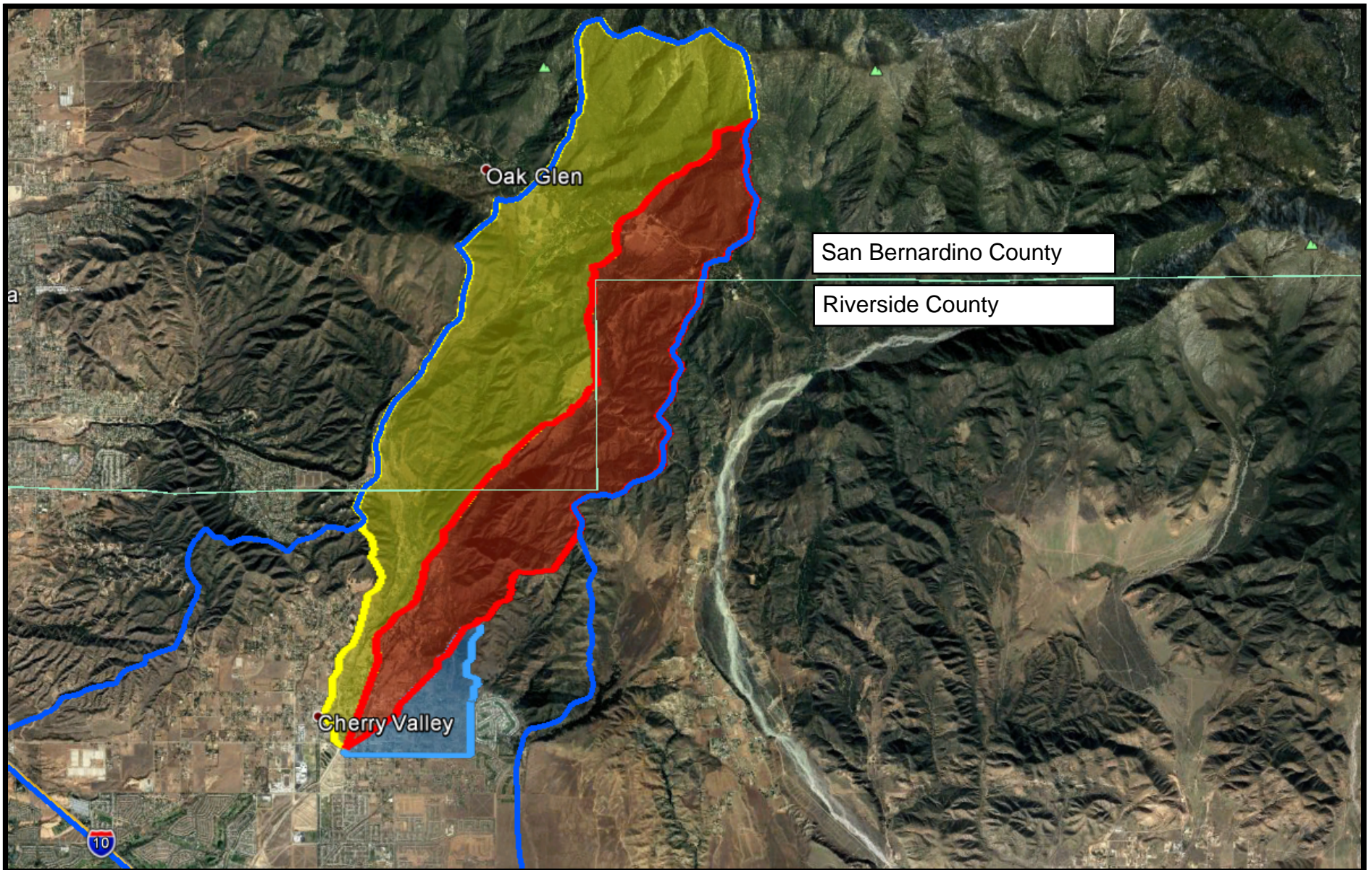
BANNING

0 2 Miles





# Exhibit "A" Beaumont Master Drainage Plan Area



<u>Drainage Boundary</u>	<u>Drainage Area (approx.)</u>	<u>Legend</u>
Little San Gorgonio Creek	4,572 Acres	
Noble Creek Chanel	3,518 Acres	
MDP Line 16	505 Acres	
Beaumont Master Drainage Plan Boundary	21,736 Acres	

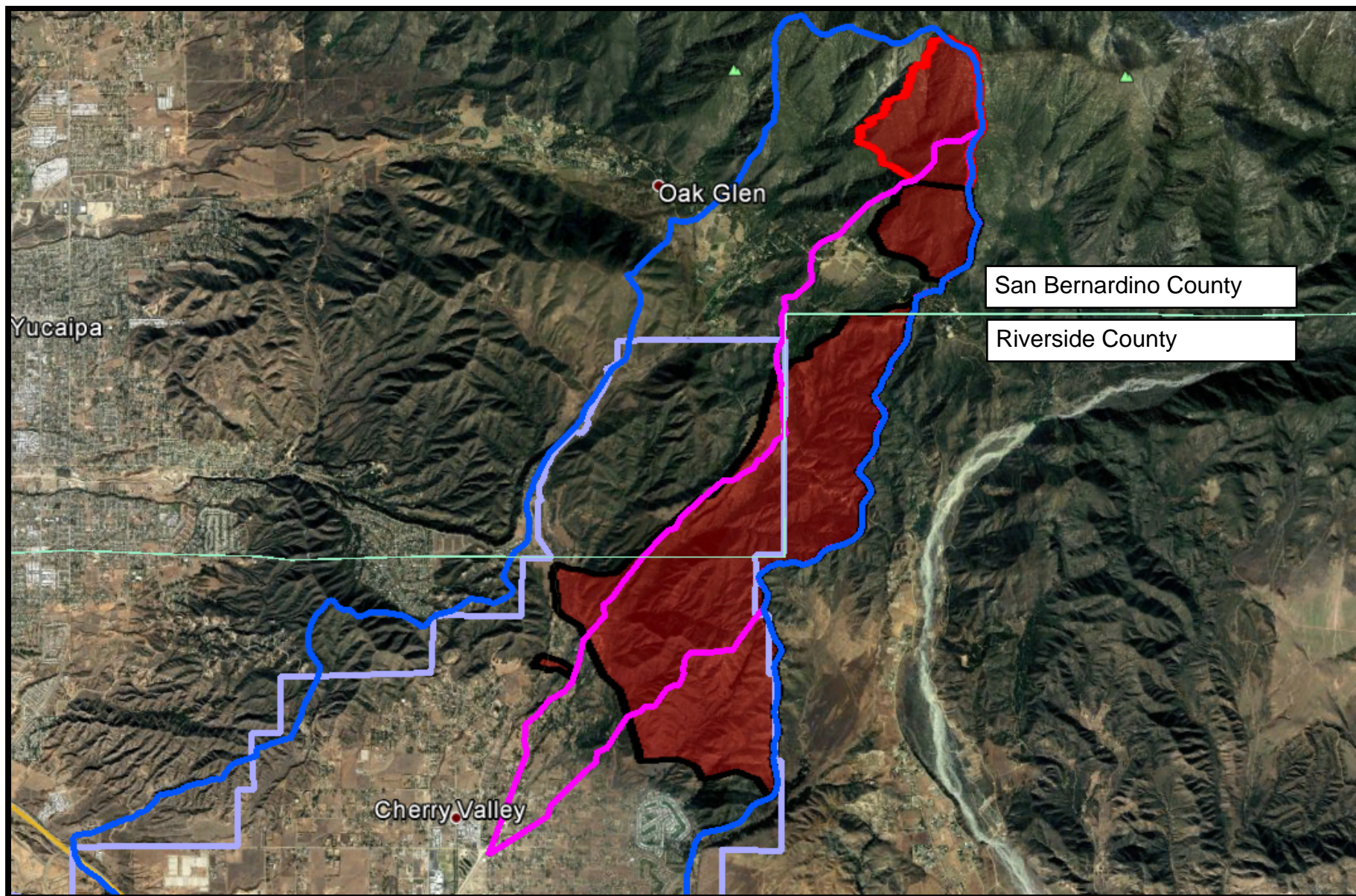


N.T.S





# Exhibit "B" - Apple Fire Affected Area within BCVWD Sphere of Influence



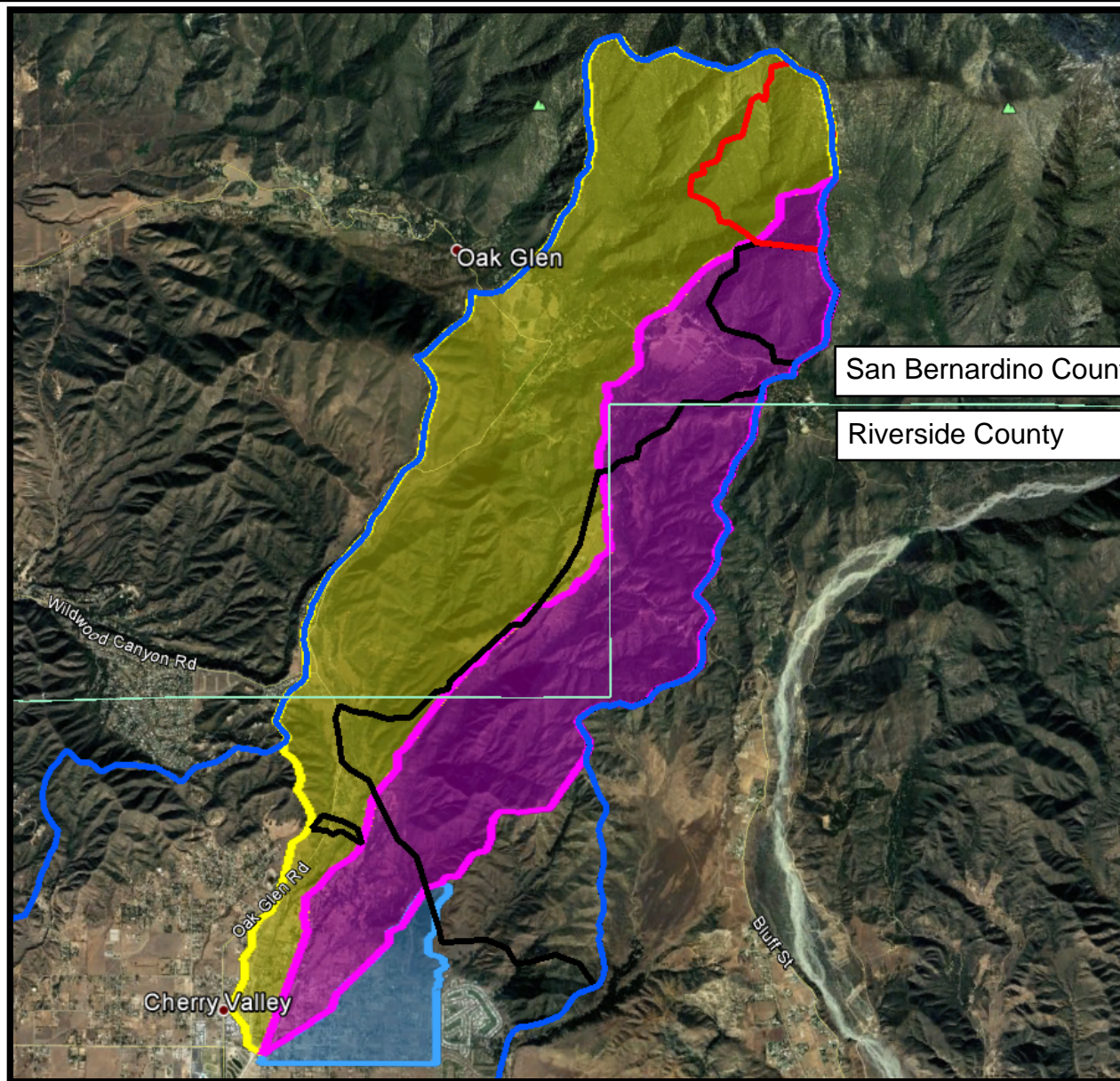
<u>Affected Area Boundary</u>	<u>Affected Area (approx.)</u>	<u>Legend</u>
Controlled Fire Edge	3,348 Acres	
Uncontrolled Fire Edge	427 Acres	
Beaumont Master Drainage Plan Boundary	21,736 Acres	
BCVWD Sphere of Influence (Overlap)	2,103 Acres	
Noble Creek Drainage Boundary		







# Exhibit "C" - Apple Fire Affected Area within Various Drainage Boundaries



## Affected Area Boundary

Controlled Fire Edge

Uncontrolled Fire Edge

Beaumont Master Drainage Plan Boundary

Little San Geronio Creek (Overlap)

Noble Creek (Overlap)

MDP Line 16 (Overlap)

## Affected Area (approx.)

3,348 Acres

427 Acres

21,736 Acres

613 Acres (351 Ac Uncontrolled)

1,872 Acres (72.2 Ac Uncontrolled)

12.1 Acres

## Legend

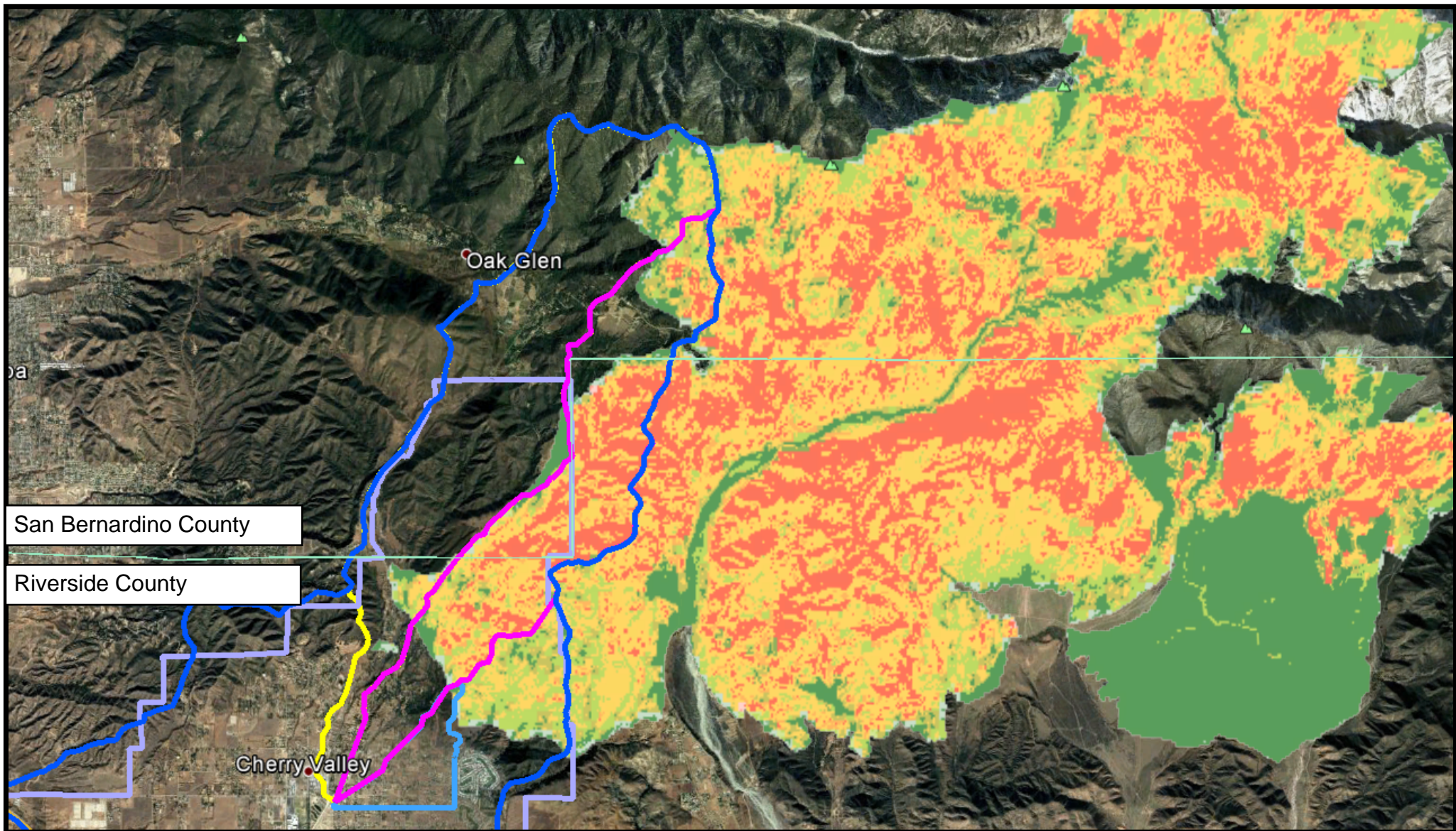


N.T.S





# Exhibit "D" - Apple Fire Affected Area Intensity within Various Drainage Boundaries



<b>Drainage Area Boundary</b>	<b>Legend</b>
Beaumont Master Drainage Plan Boundary	
Little San Gorgonio Creek	
Noble Creek	
MDP Line 16	

<b>Fire Intensity (Severity)</b>	<b>Legend</b>
Unburned or Low	
Low	
Moderate	
High	

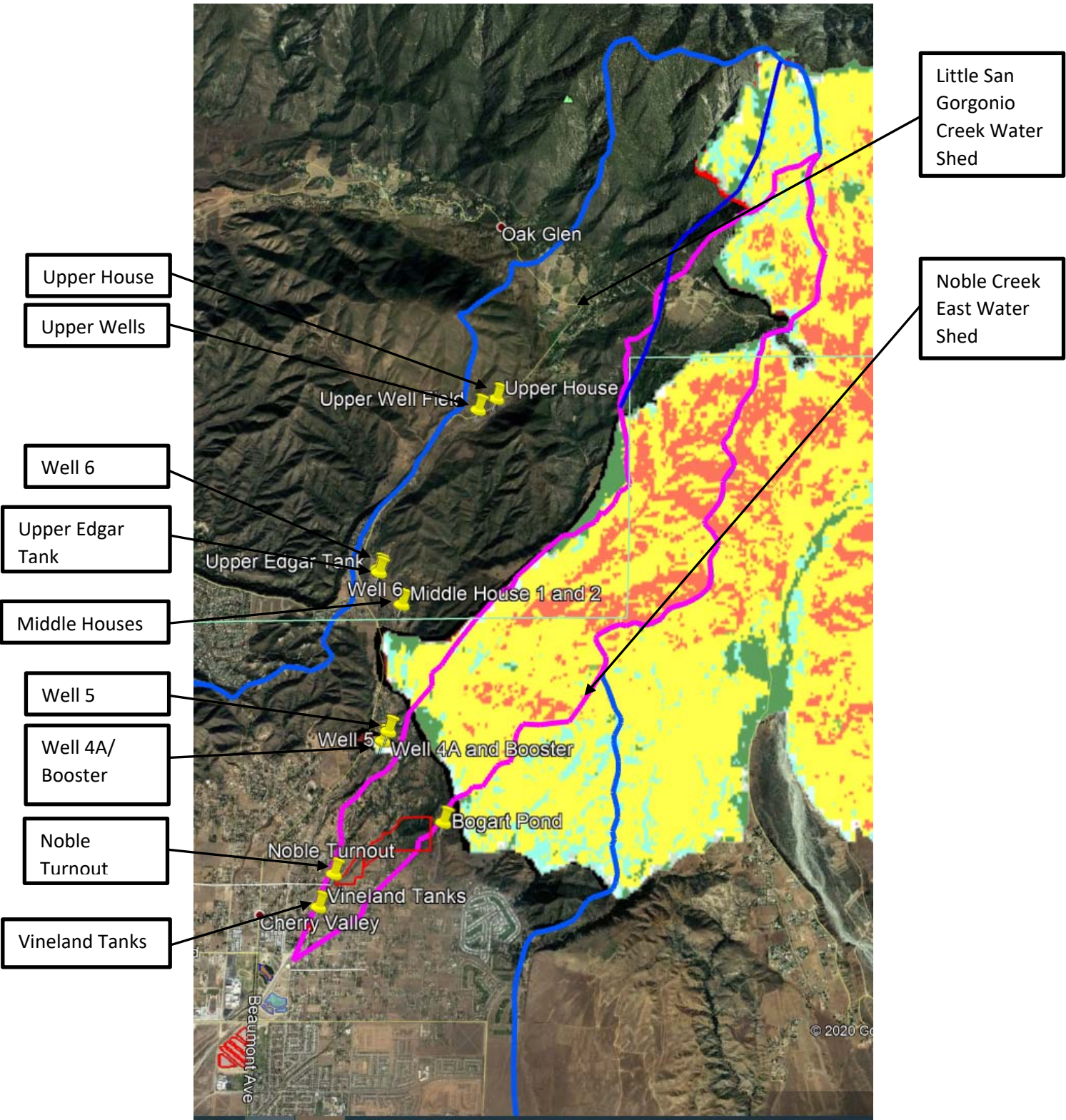


N.T.S



BEAUMONT-CHERRY VALLEY WATER DISTRICT

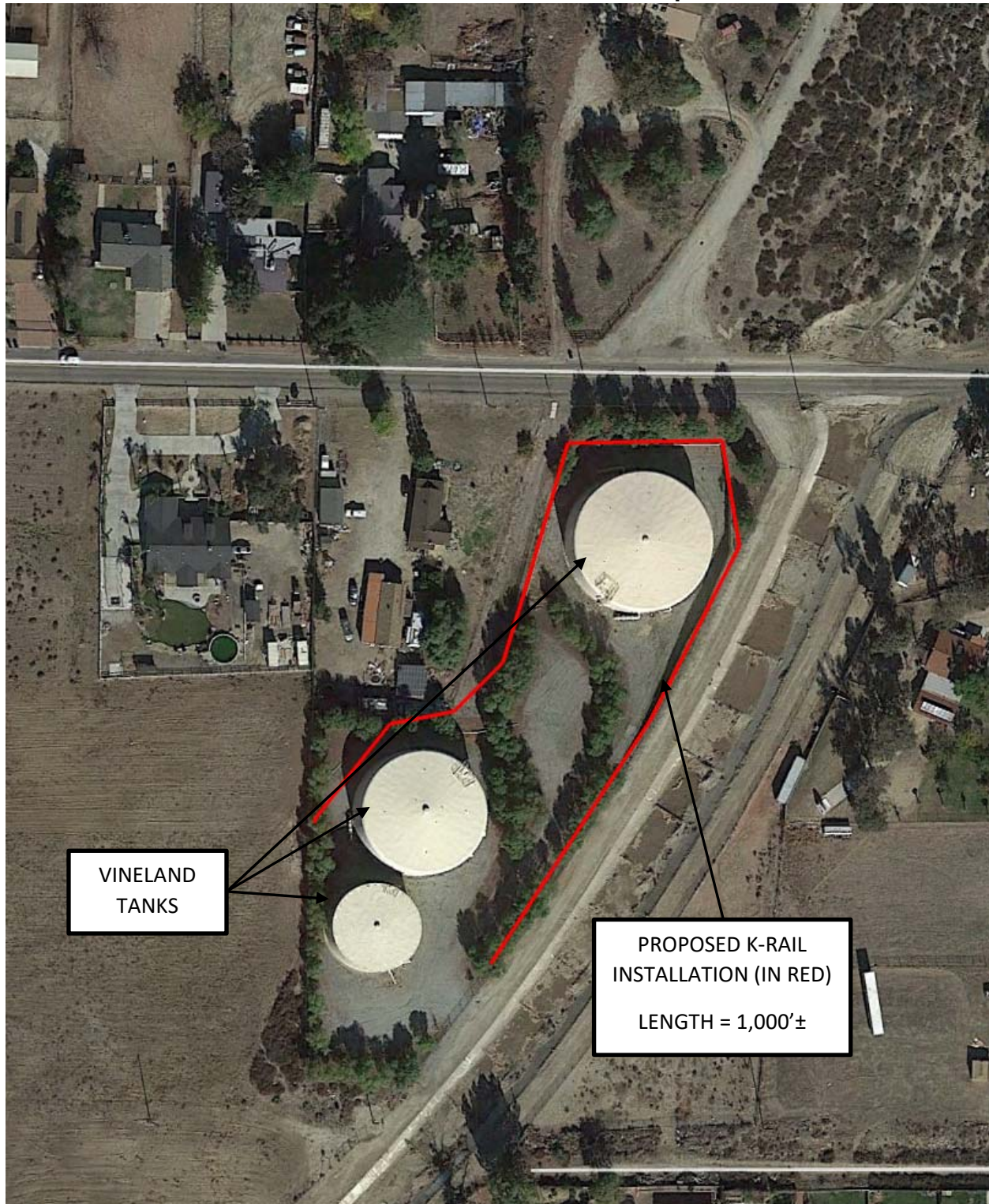
Exhibit “E” - Local Facilitie Map





# BEAUMONT-CHERRY VALLEY WATER DISTRICT

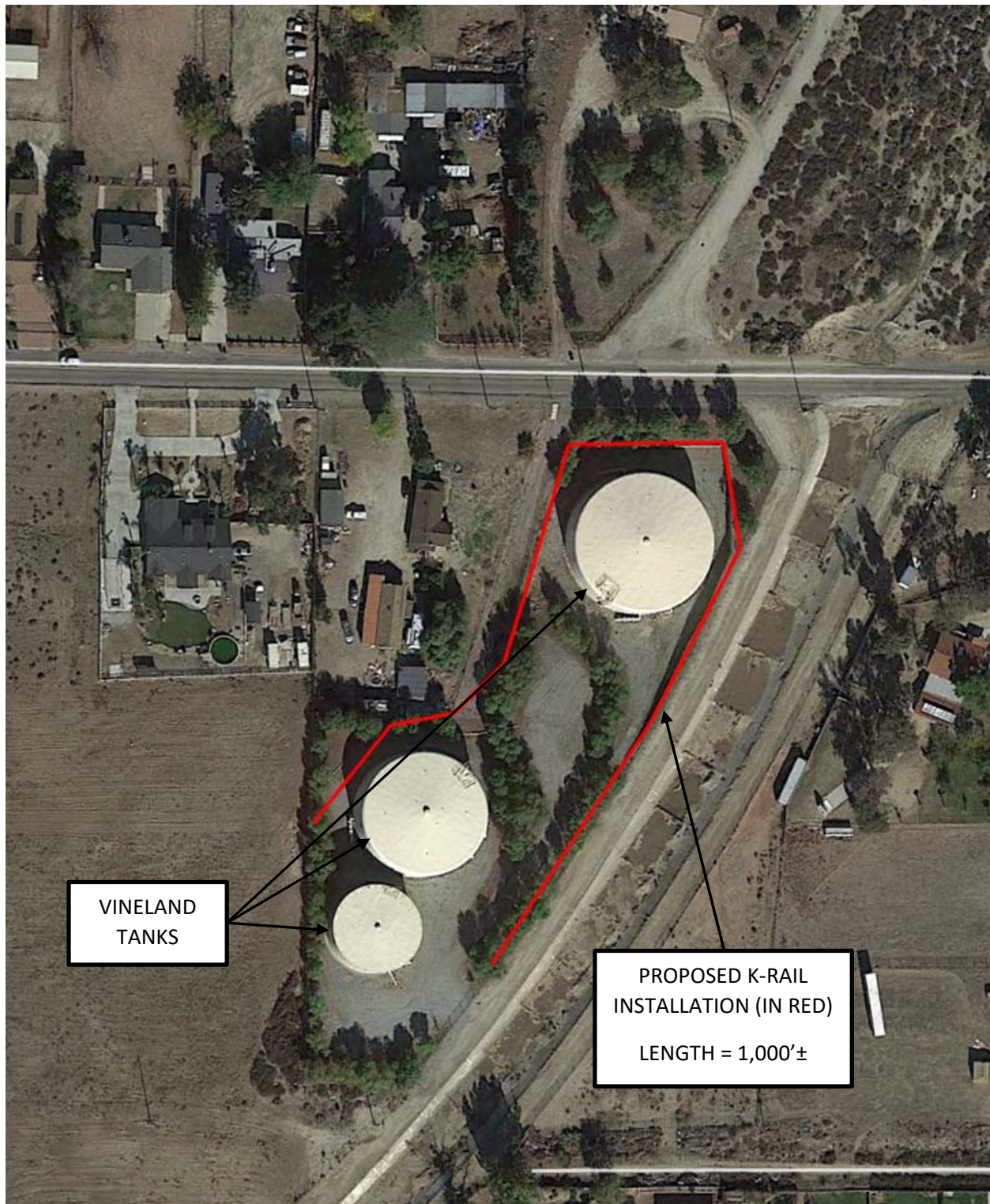
## Exhibit "F" - Vineland Tank Map





# BEAUMONT-CHERRY VALLEY WATER DISTRICT

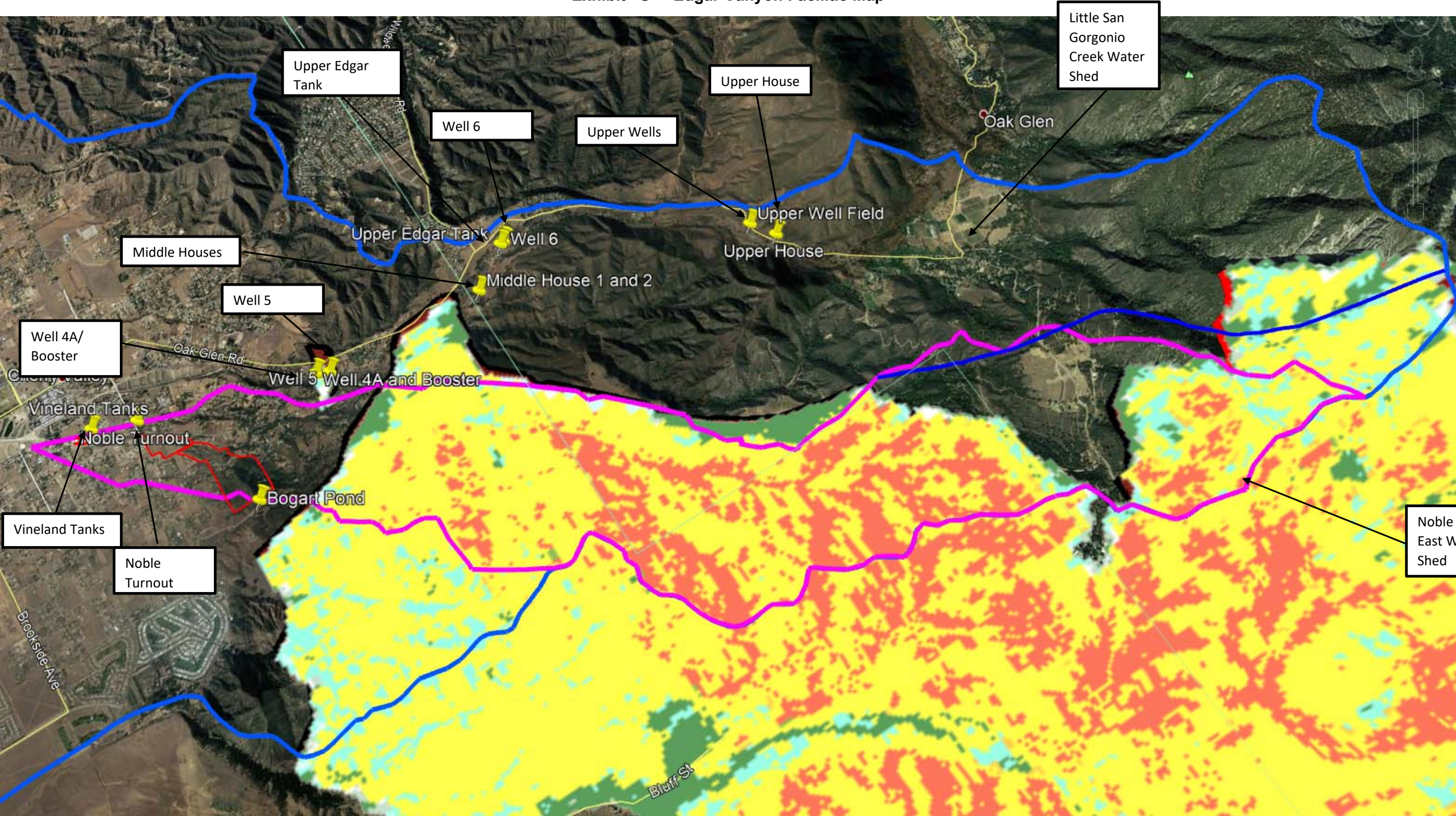
## Exhibit "F" Vineland Tank Map





BEAUMONT-CHERRY VALLEY WATER DISTRICT

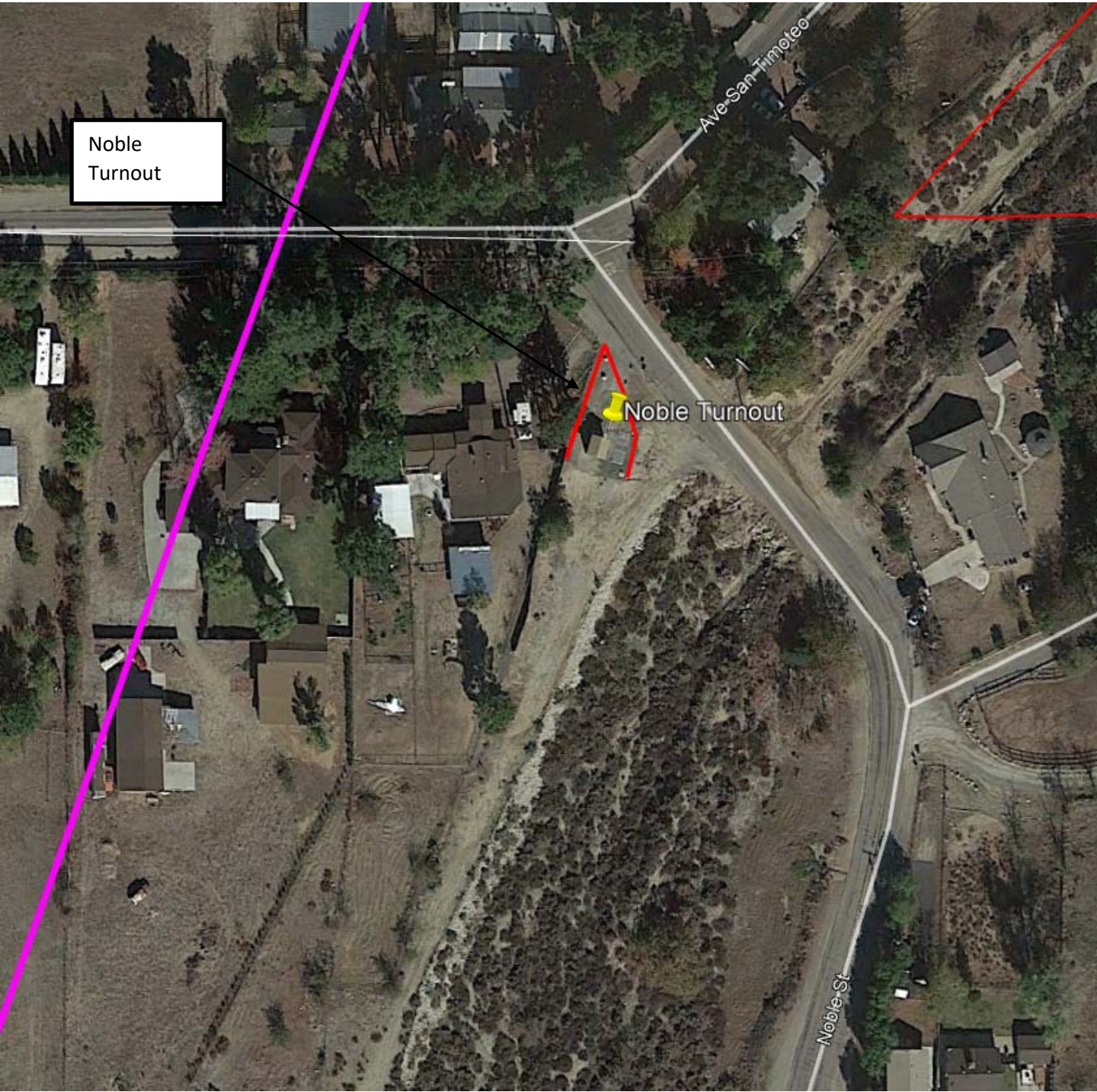
Exhibit "G" - Edgar Canyon Facilitie Map





BEAUMONT-CHERRY VALLEY WATER DISTRICT

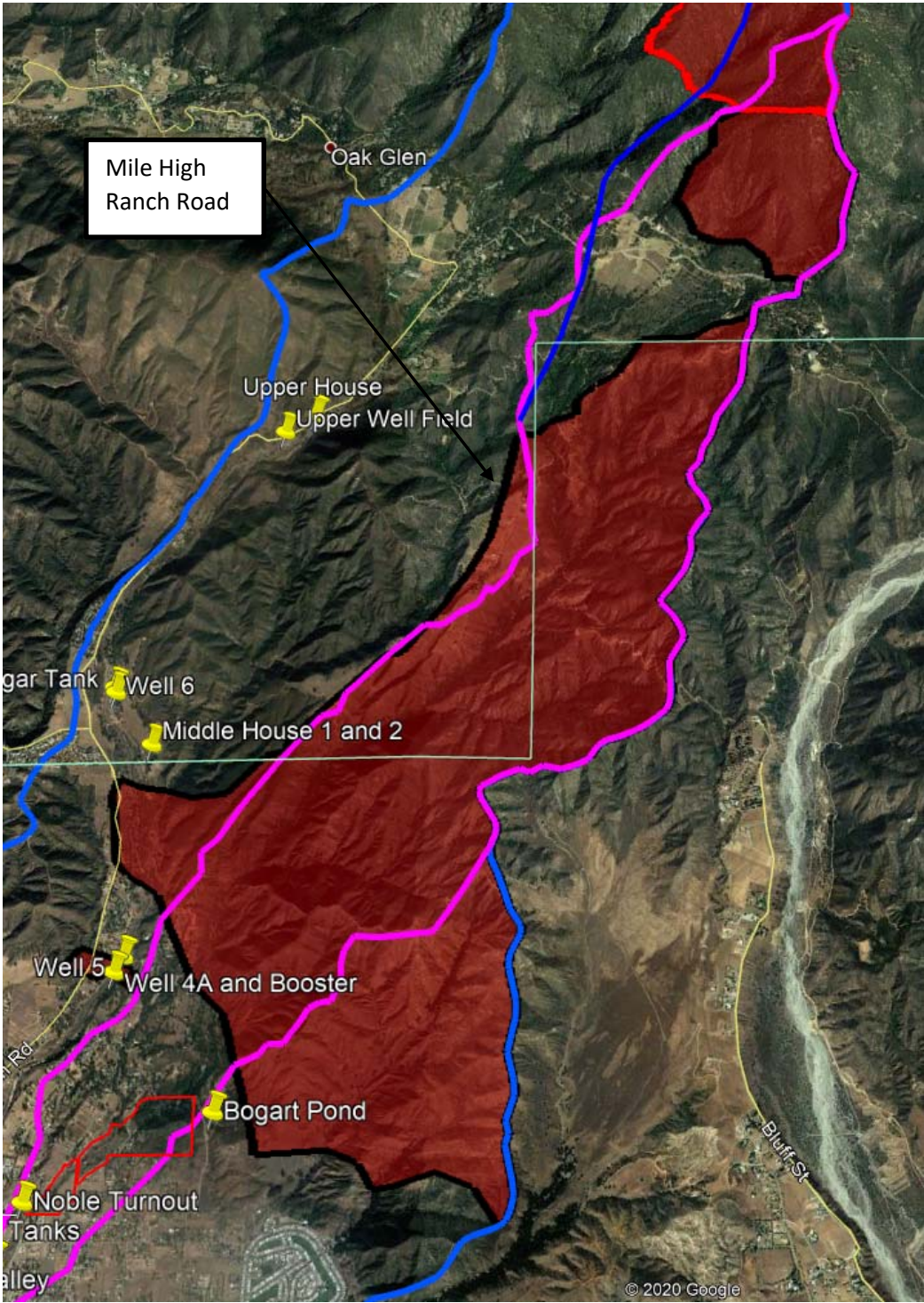
Exhibit “H” Noble SWP Turnout Map and Images





BEAUMONT-CHERRY VALLEY WATER DISTRICT

Exhibit “I” - Mile High Road Images



Mile High Ranch Road  
Looking North



Mile High Ranch Road  
Looking East



Mile High Ranch Road  
Looking South



BEAUMONT-CHERRY VALLEY WATER DISTRICT

Exhibit “J” - Yorba Linda November 2008 Flood Damage Images



Slope  
Protection  
with Burlap  
Fabric



Basin Filled  
with Debris  
from Canyon  
in Background



Debris Flow  
from a Basin  
and Through  
an Easement



Basin with  
Debris after  
Storm Event



Near Chino Hills  
State Park. K-Rail  
Separated by  
Debris Flow



Separated K-Rail by  
Debris Flow Large  
Diameter Pipeline  
Nearby