

RESOLUTION 2020-24

**A RESOLUTION OF THE BOARD OF DIRECTORS
OF THE BEAUMONT-CHERRY VALLEY WATER DISTRICT
REVISING THE DISTRICT'S SALARY SCHEDULE AND
ORGANIZATION CHART EFFECTIVE OCTOBER 15, 2020**

WHEREAS, it is determined to be in the best interest of the Beaumont-Cherry Valley Water District ("District") to hire and compensate employees to perform desired essential functions and responsibilities; and

WHEREAS, the Board of Directors of the District has adopted a salary schedule and organizational chart effective January 1, 2020; and

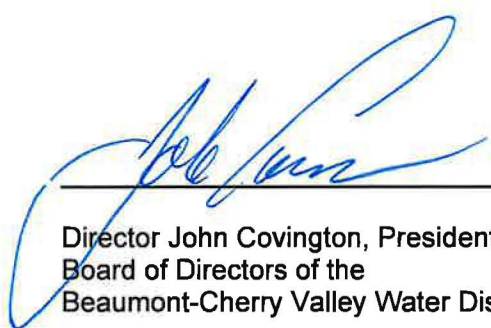
WHEREAS, the District has proposed an amendment of the job classification Information Technology Manager to Director of Information Technology at an amended range of \$115,440-\$140,316.80 as approved in the 2020 Budget.

NOW THEREFORE, BE IT RESOLVED by the Board of Directors of the Beaumont-Cherry Valley Water District that the "Salary Schedule" referenced by "Attachment A" and the "Organization Chart" referenced as "Attachment B" are hereby adopted effective October 15, 2020.

ADOPTED this 14th day of October, 2020 by the following vote:


AYES: Covington, Hoffman, Ramirez, Slawson, Williams
NOES:
ABSTAIN:
ABSENT:

//
//
//
//



Director John Covington, President of the
Board of Directors of the
Beaumont-Cherry Valley Water District

ATTEST:

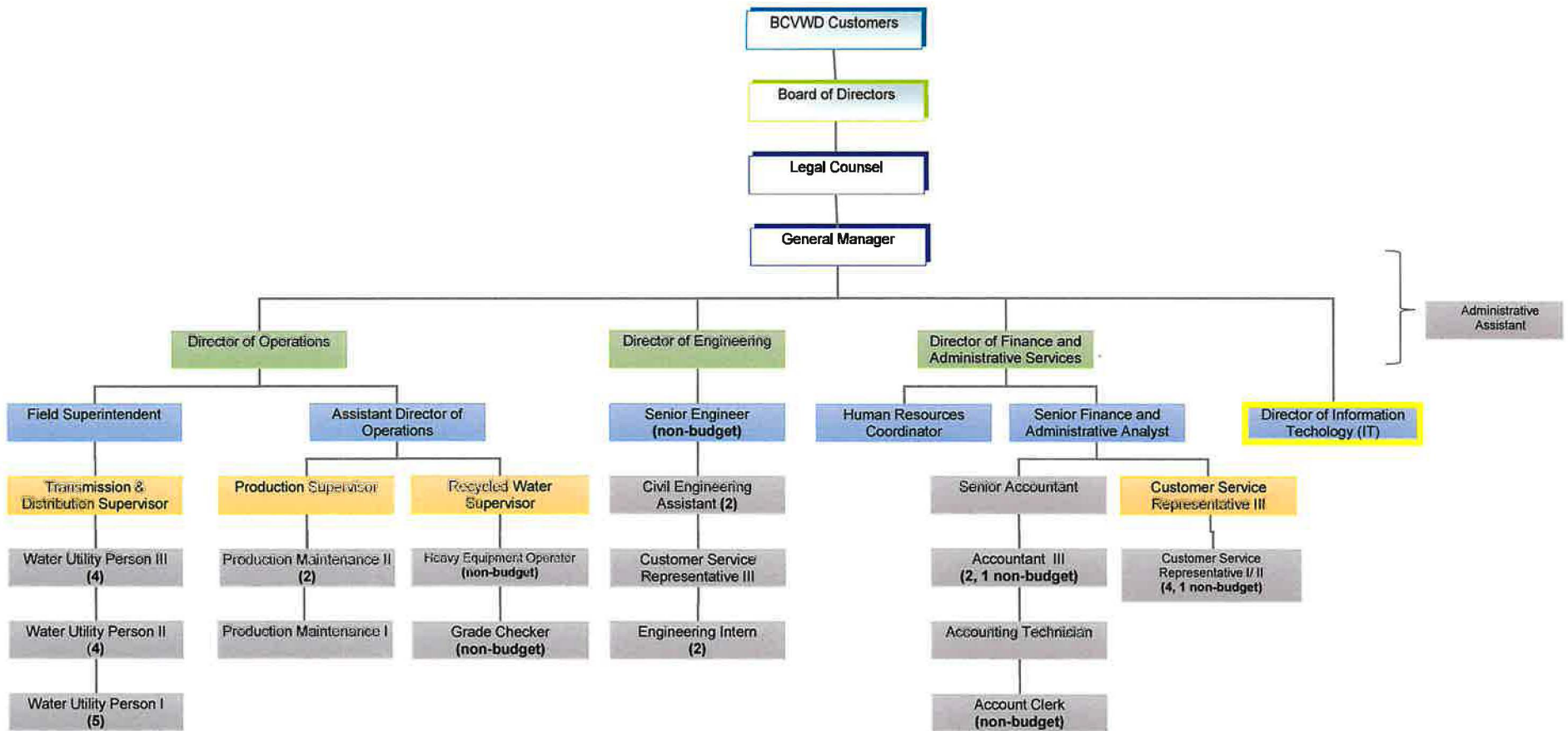


Director Lona Williams, Secretary to the
Board of Directors of the
Beaumont-Cherry Valley Water District

Attachment A

Beaumont-Cherry Valley Water District Salary Schedule							
Effective: TBD	Hourly Rates					Annual Range	
	1	2	3	4	5		
Classification							
Accountant III	34.83	36.57	38.40	40.32	42.34	72,446.40	88,067.20
Accounting Assistant	21.70	22.79	23.92	25.12	26.38	45,136.00	54,870.40
Accounting Technician	26.39	27.71	29.10	30.55	32.08	54,891.20	66,726.40
Administrative Assistant	21.95	23.05	24.20	25.41	26.68	45,656.00	55,494.40
Assistant Director of Operations	41.63	43.71	45.90	48.19	50.60	86,590.40	105,248.00
Civil Engineering Assistant	33.65	35.33	37.10	38.95	40.90	69,992.00	85,072.00
Customer Service Representative I	17.42	18.29	19.20	20.16	21.17	36,233.60	44,033.60
Customer Service Representative II	20.48	21.50	22.58	23.71	24.90	42,598.40	51,792.00
Customer Service Representative III	26.00	27.30	28.67	30.10	31.60	54,080.00	65,728.00
Director of Engineering	71.52	75.10	78.85	82.79	86.93	148,761.60	180,814.40
Director of Finance and Administrative Services	62.00	65.10	68.35	71.77	75.36	128,960.00	156,748.80
Director of Information Technology	55.50	58.28	61.19	64.25	67.46	115,440.00	140,316.80
Director of Operations	60.55	63.58	66.76	70.10	73.61	125,944.00	153,108.80
District Engineer	92.62	97.25	102.11	107.22	112.58	192,649.60	234,166.40
Engineering Intern	14.80	15.54	16.32	17.14	18.00	30,784.00	37,440.00
Field Superintendent	41.63	43.71	45.90	48.19	50.60	86,590.40	105,248.00
General Manager	contract rate increased by COLA				105.50		219,440.00
Grade Checker (1000 HR)	28.79	30.23	31.74	33.33	35.00	59,883.20	72,800.00
Heavy Equipment Operator (1000 HR)	31.27	32.83	34.47	36.19	38.00	65,041.60	79,040.00
Human Resource Coordinator	26.00	27.30	28.67	30.10	31.60	54,080.00	65,728.00
Production Maintenance I	20.90	21.94	23.04	24.19	25.40	43,472.00	52,832.00
Production Maintenance II	25.62	26.90	28.24	29.65	31.13	53,289.60	64,750.40
Production Supervisor	33.82	35.51	37.29	39.15	41.11	70,345.60	85,508.80
Recycled Water Supervisor	33.49	35.16	36.92	38.77	40.71	69,659.20	84,676.80
Senior Accountant	36.57	38.40	40.32	42.34	44.46	76,065.60	92,476.80
Senior Engineer	57.77	60.66	63.69	66.87	70.21	120,161.60	146,036.80
Sr. Finance and Administrative Analyst	40.75	42.79	44.93	47.18	49.54	84,760.00	103,043.20
Transmission & Distribution Supervisor	33.49	35.16	36.92	38.77	40.71	69,659.20	84,676.80
Water Utility Person I	18.31	19.23	20.19	21.20	22.26	38,084.80	46,300.80
Water Utility Person II	21.53	22.61	23.74	24.93	26.18	44,782.40	54,454.40
Water Utility Person III	24.21	25.42	26.69	28.02	29.42	50,356.80	61,193.60
Board of Directors	\$200 per day for meeting attendance in accordance with District rules						

BCVWD Organization Chart 2020



Effective 10/15/2020

