



Beaumont-Cherry Valley Water District

Serving the Beaumont, Cherry Valley and some areas of Calimesa

December 2021 Storm Event Updates

Presentation to
Board of Directors
January 27, 2022
Engineering Workshop

December 14, 2021 Storm Event





Noble Creek Channel, at the intersection of Beaumont Avenue north of Brookside Avenue



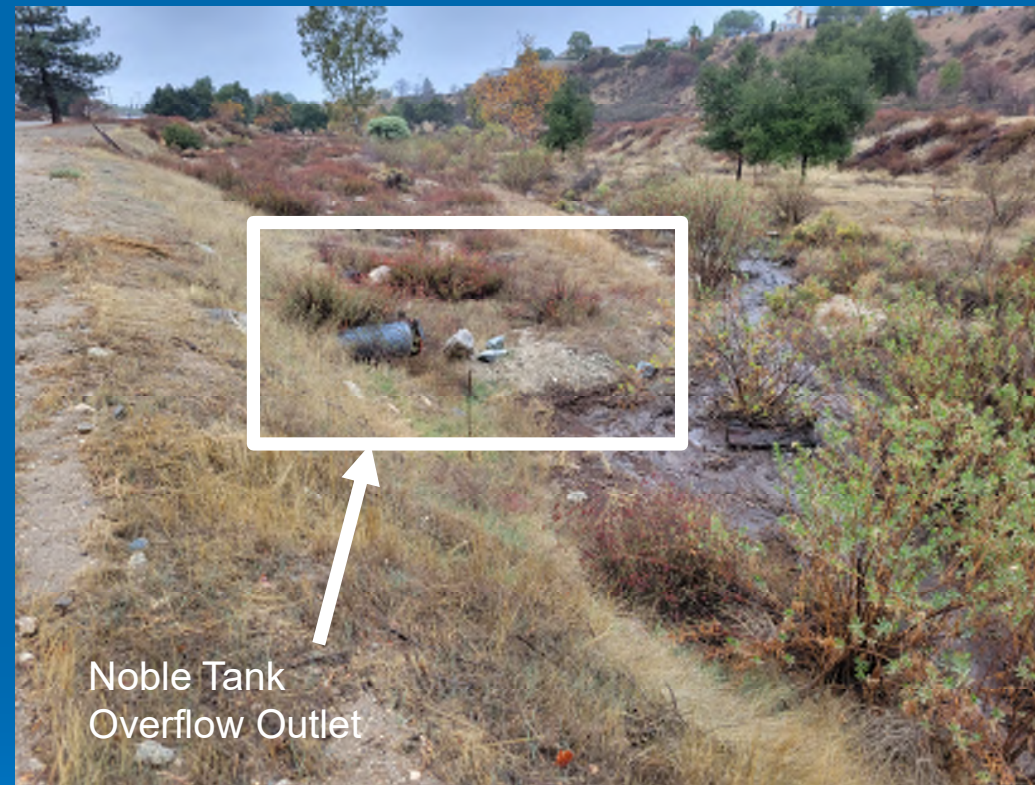
Noble Creek at the intersection of Beaumont Avenue,
north of Brookside Avenue



Noble Creek at the intersection of Cherry Valley Boulevard,
east of the Noble Creek Recharge Facilities Phase I



Noble Creek crossing at Noble Street, southeast of Orchard Street. Location of required emergency scour repair



Noble Tank
Overflow Outlet

Noble Creek along International Park
Road, just west of Noble Tank.
Location of required emergency
scour repair



Noble Creek at Avenida Altura
Bella, just north of the Noble
Tank Site



Mud flow in Noble Creek at the debris retention system constructed by Riverside County Flood Control and Water Conservation District (RCFC&WCD)



Mud flow in Edgar Canyon

December 15-22, 2021 Post-Storm





Noble Creek Channel at the Beaumont Avenue crossing, north of Brookside Avenue



Noble Creek at the debris
retainment system constructed
by RCFC&WCD



Noble Creek just west of the
Noble Tank Site



District's access road crossing
Noble Creek in Edgar Canyon



Inner view of the culvert under
District access road



Location of District work and
storm prep in Wallace Canyon

December 23-26, 2021 Storm Event





Exposed CML&C Pipe in Noble Street at location of scour from debris flow in Noble Creek



District staff taking field measurements



Location of exposed CML&C waterline in Noble Street at the Noble Creek crossing. During District temporary emergency repairs



Noble Creek south of Brookside Avenue. Rip rap placed by RCFC&WCD as emergency measure



Noble Creek at Avenida Altura Bella, just north of the Noble Tank Site



Noble Tank Overflow Outlet

Noble Creek along International Park Road, just west of Noble Tank. Location of required emergency scour repair

December 27-29, 2021 Post-Storm





Location of exposed CML&C waterline in Noble Street at the Noble Creek crossing. During District temporary emergency repairs (12/27/2021)



Location of exposed CML&C waterline in Noble Street at the Noble Creek crossing. During District temporary emergency repairs (12/28/2021)



Location of exposed CML&C waterline in Noble Street at the Noble Creek crossing. During District temporary emergency repairs (12/29/2021)



Noble Creek Channel at Beaumont Avenue crossing, north of Brookside Avenue



RCFC&WCD completing work on Noble Creek south of Brookside Avenue,
west of Beaumont Avenue



Questions??

