

# REDISTRICTING **BCVWD**

Adjusted Mapping Scenarios

*January, 2022*

# REDISTRICTING BCVWD SCENARIO 1 - ADJUSTED

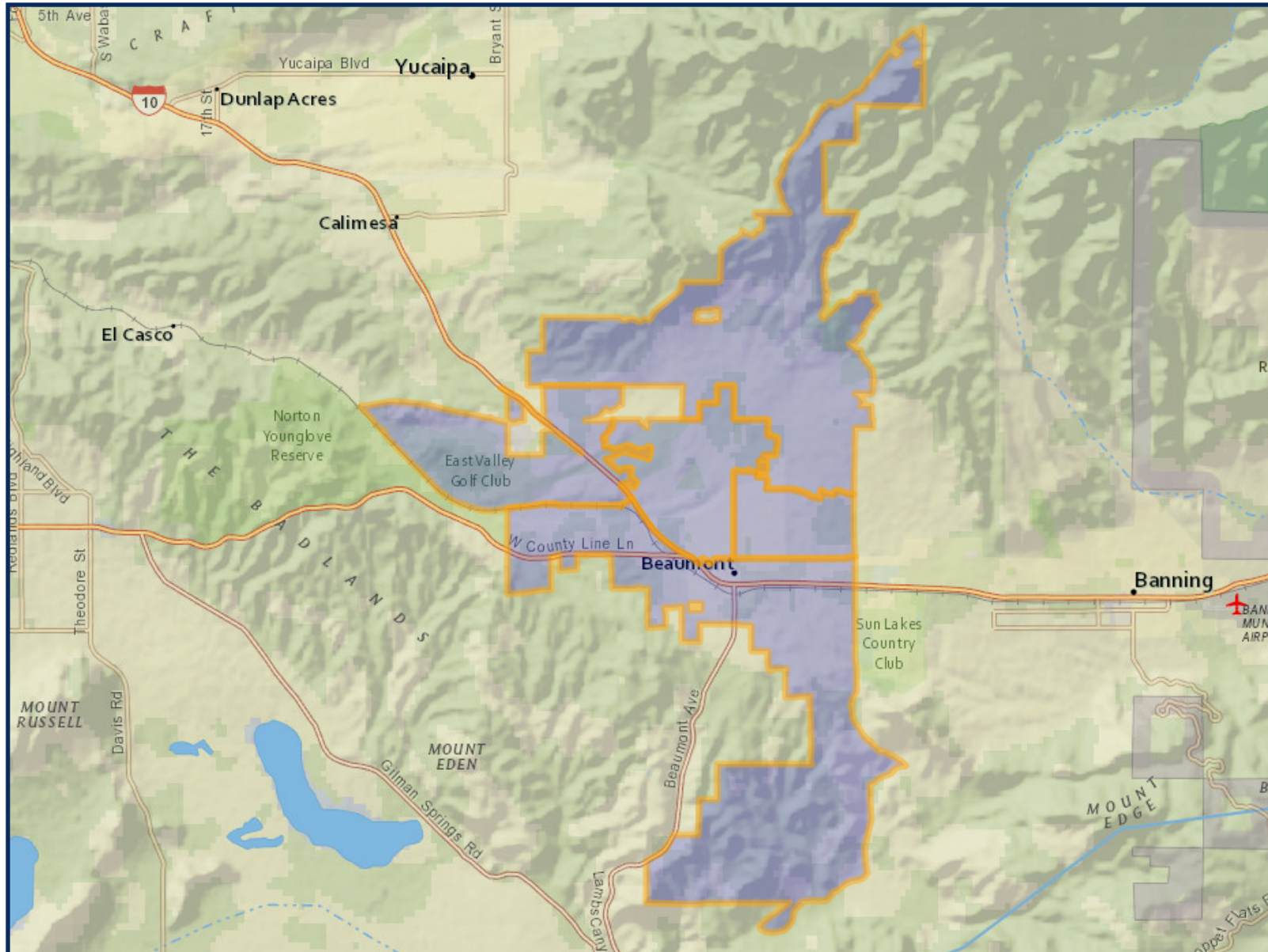
	DIVISION 1	DIVISION 2	DIVISION 3	DIVISION 4	DIVISION 5
2020 Census Count*	12,287	11,963	11,804	11,824	11,961
Deviation #	319	-5	-164	-144	-7
Deviation %	2.6%	-0.0%	-1.4%	-1.2%	-0.1%
2010 Census Count	7,556	11,202	7,452	9,252	7,811
2019 CVAP*	7,623	7,854	6,183	7,524	7,658
2010 CVAP	5,437	7,241	3,531	4,991	3,639



\*Adjusted for prisoner reallocation

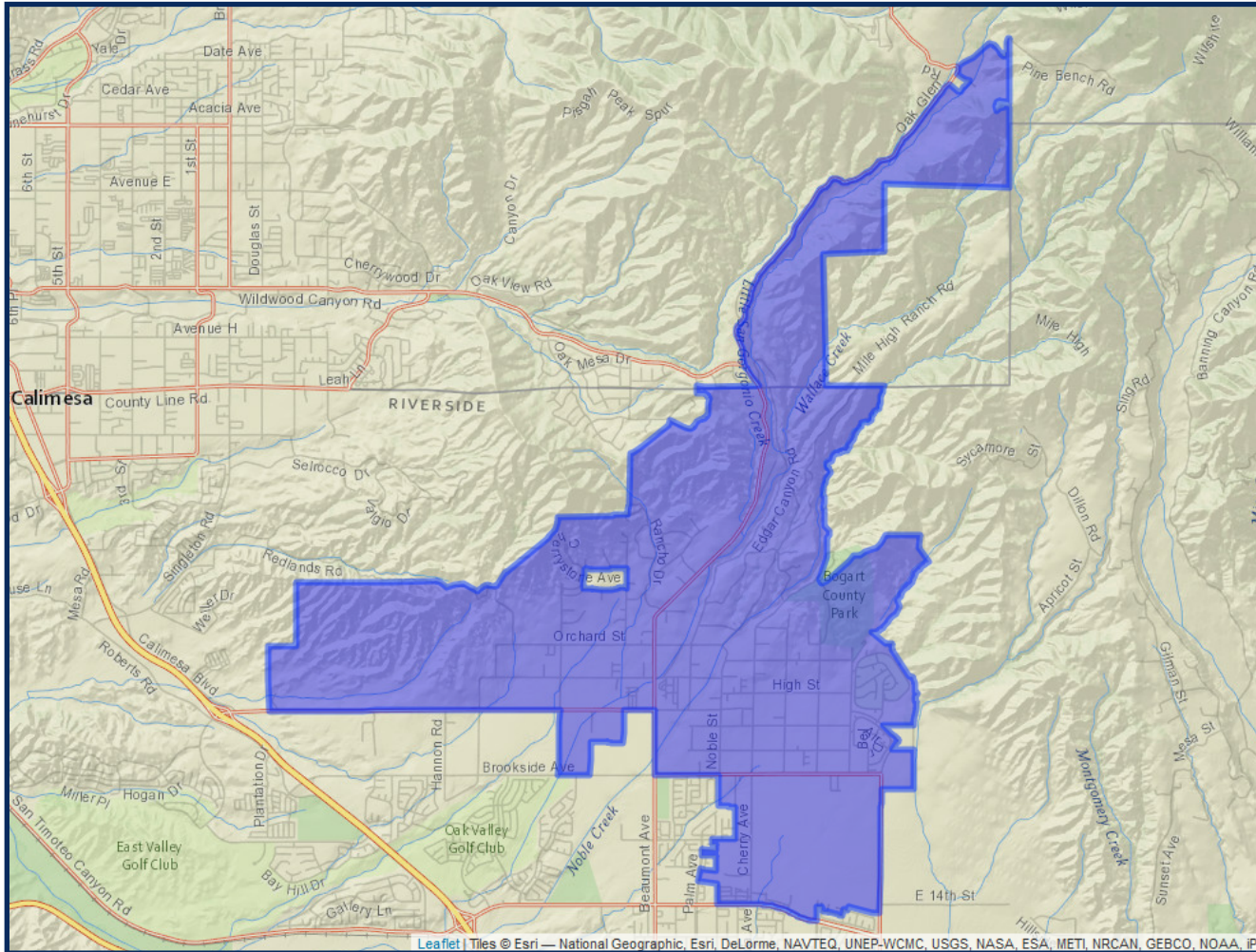


# REDISTRICTING BCVWD SCENARIO I - ADJUSTED



# REDISTRICTING BCVWD SCENARIO I - ADJUSTED

## DIVISION 1

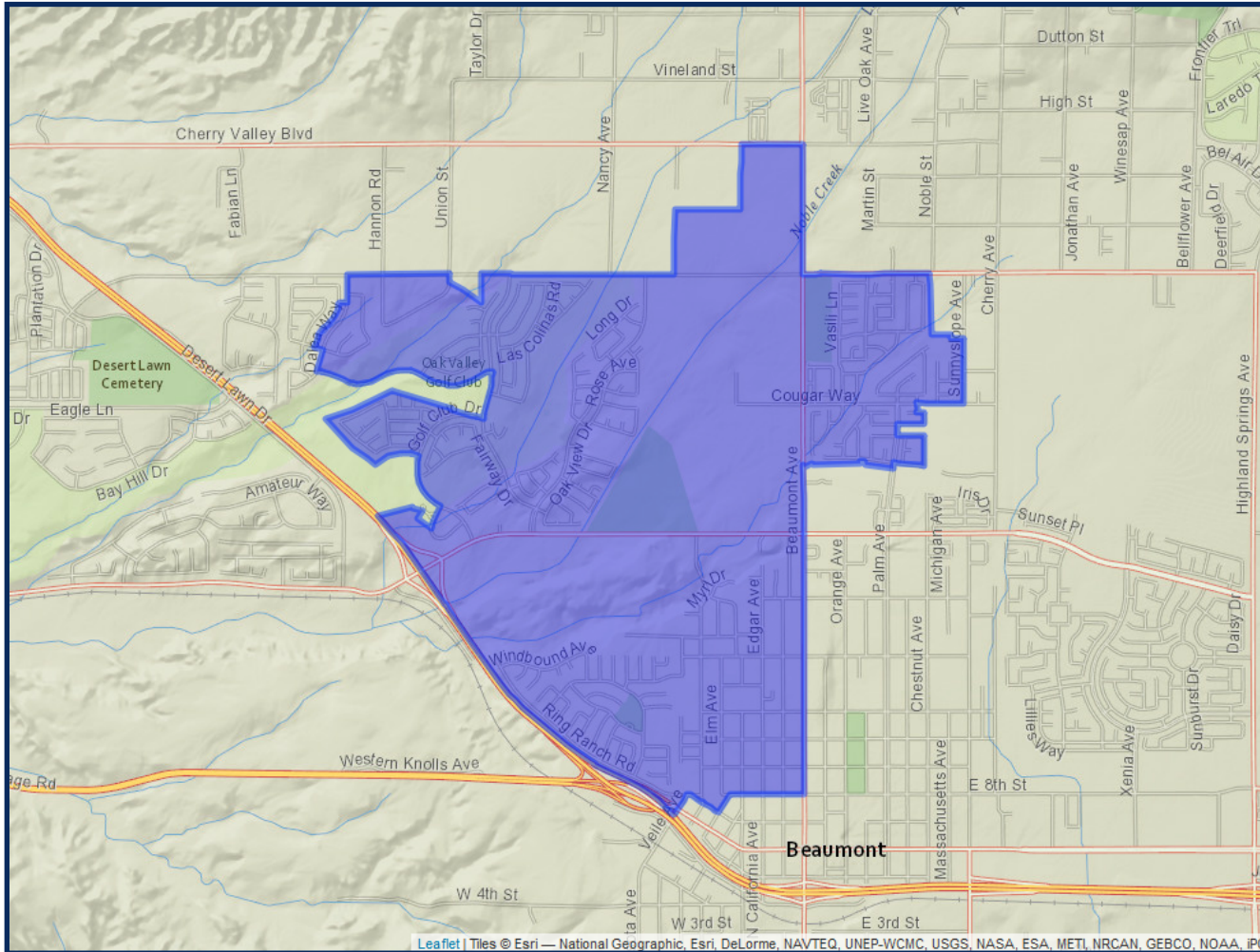


	2020 Count*	2019 CVAP*
Total	12,287	7,623
White	47.96%	61.18%
Black	6.14%	7.60%
Asian	7.06%	2.26%
Hispanic	33.86%	25.61%



# REDISTRICTING BCVWD SCENARIO I - ADJUSTED

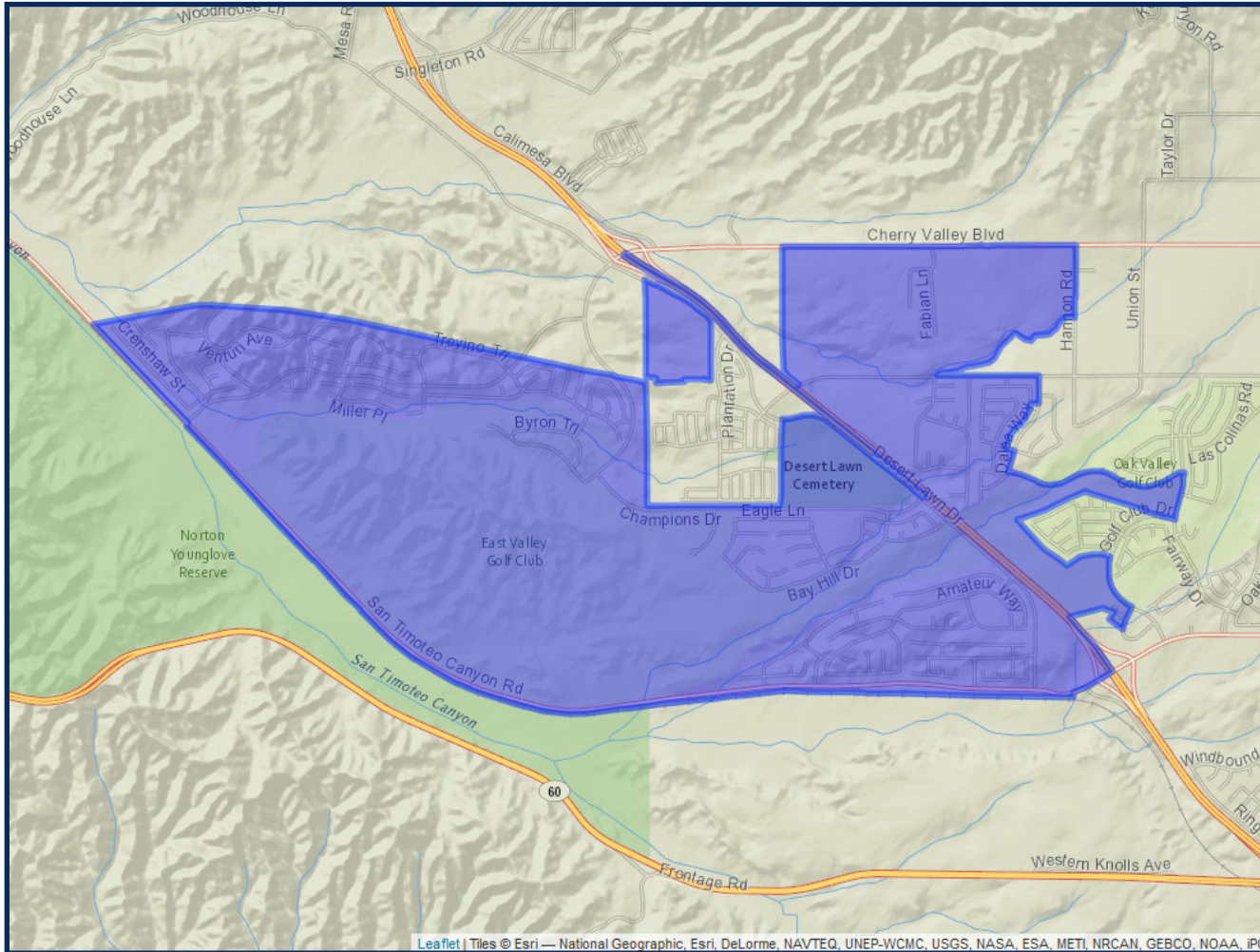
## DIVISION 2



	2020 Count*	2019 CVAP*
Total	11,963	7,854
White	43.44%	45.63%
Black	4.55%	7.68%
Asian	4.76%	5.65%
Hispanic	41.95%	41.07%

# REDISTRICTING BCVWD SCENARIO I - ADJUSTED

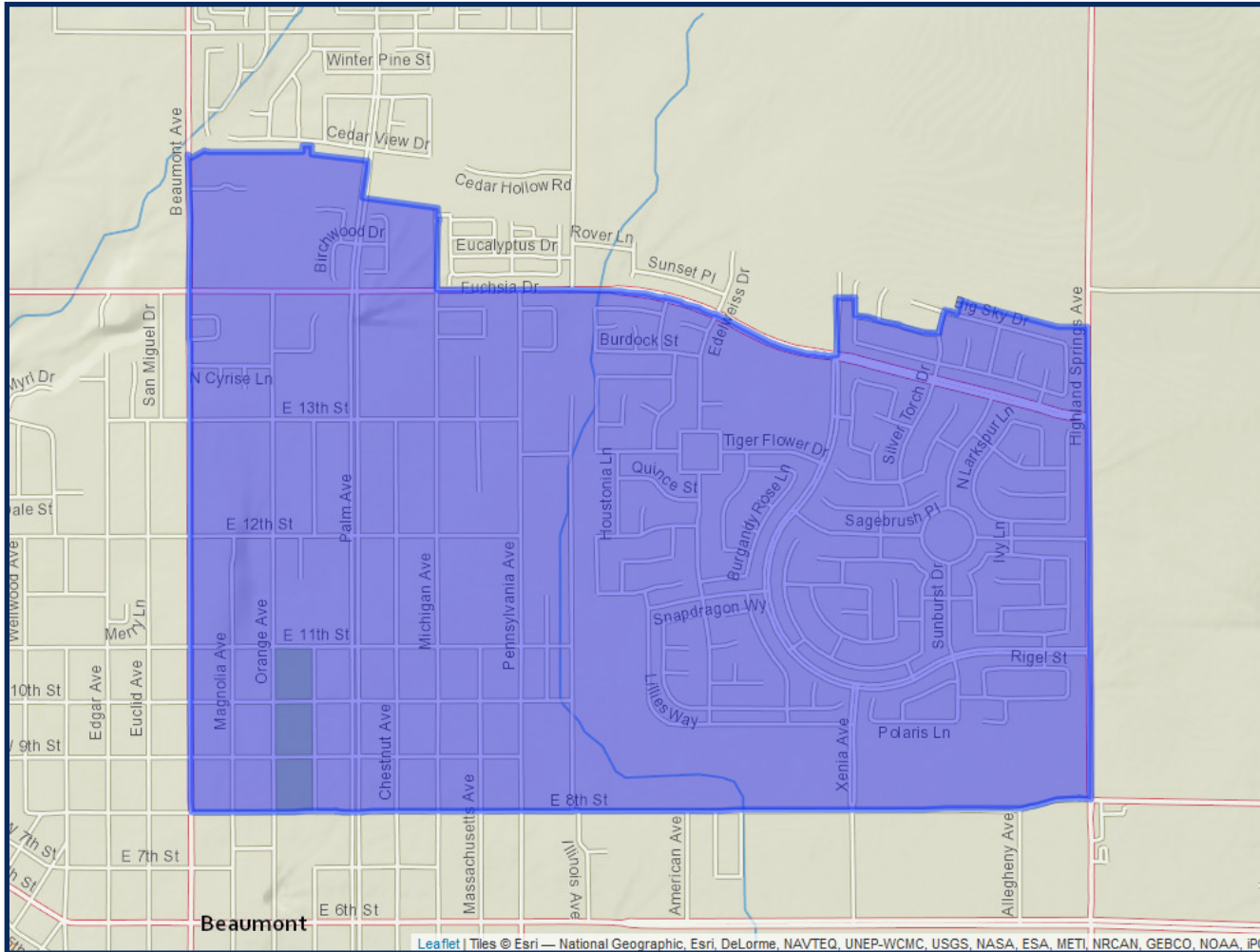
## DIVISION 3



	2020 Count*	2019 CVAP*
Total	11,804	6,183
White	35.80%	39.32%
Black	9.06%	6.08%
Asian	11.75%	11.98%
Hispanic	37.70%	38.41%

# REDISTRICTING BCVWD SCENARIO I - ADJUSTED

## DIVISION 4

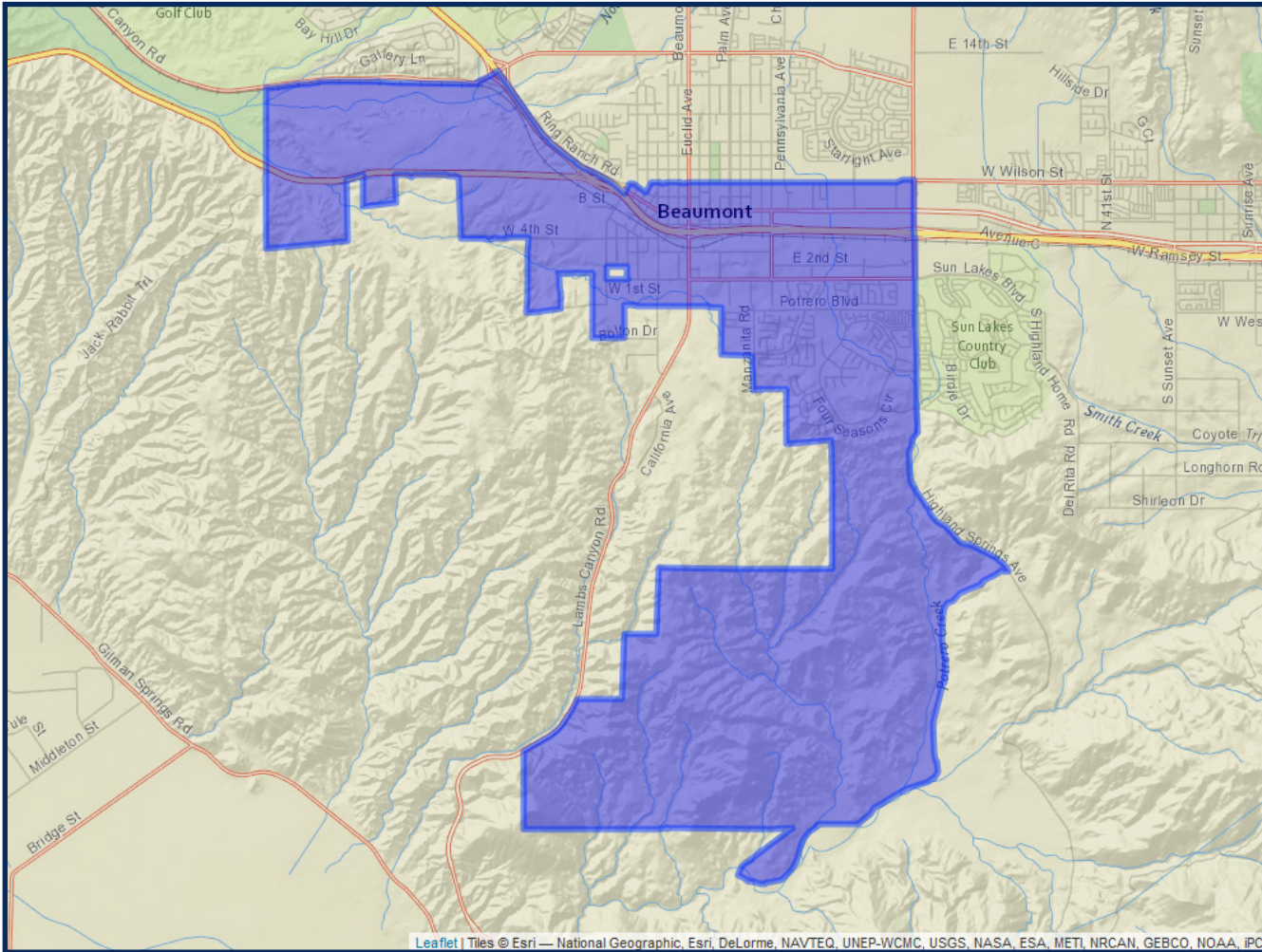


	2020 Count*	2019 CVAP*
Total	11,824	7,524
White	32.78%	33.60%
Black	6.72%	9.40%
Asian	7.95%	8.90%
Hispanic	46.88%	45.83%



# REDISTRICTING BCVWD SCENARIO I - ADJUSTED

## DIVISION 5



	2020 Count*	2019 CVAP*
Total	11,961	7,658
White	36.58%	44.86%
Black	9.61%	11.69%
Asian	7.01%	7.26%
Hispanic	42.06%	33.30%

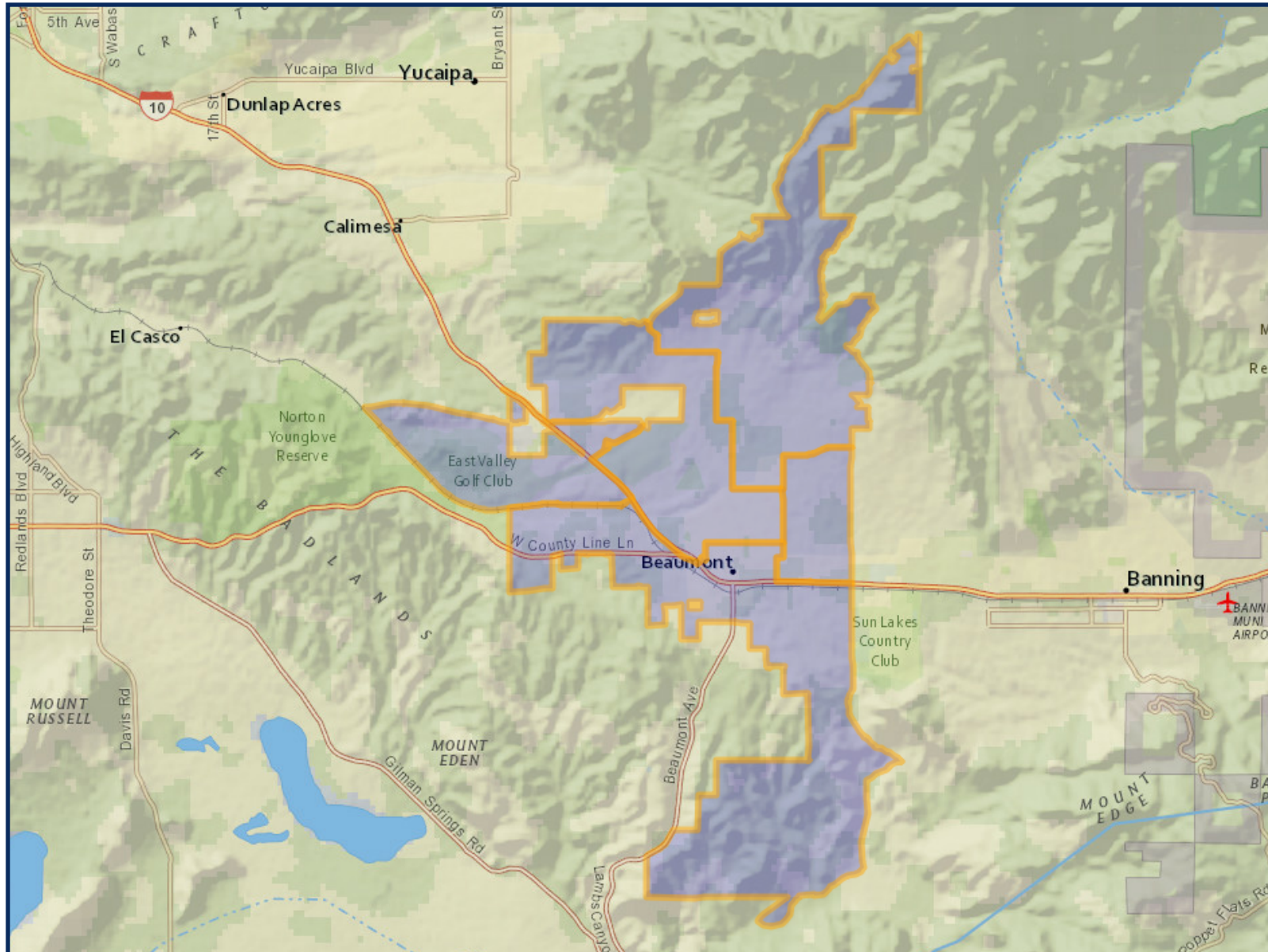
# REDISTRICTING BCVWD SCENARIO 2 - ADJUSTED

	DIVISION 1	DIVISION 2	DIVISION 3	DIVISION 4	DIVISION 5
2020 Census Count*	11,886	11,669	12,024	12,078	12,182
Deviation #	-82	-299	56	110	214
Deviation %	-0.7%	-2.6%	0.5%	0.9%	1.8%
2010 Census Count	9,759	11,232	7,486	6,537	8,259
2019 CVAP*	8,000	7,933	6,334	6,784	7,791
2010 CVAP	6,629	7,267	3,545	3,454	3,942



\*Adjusted for prisoner reallocation

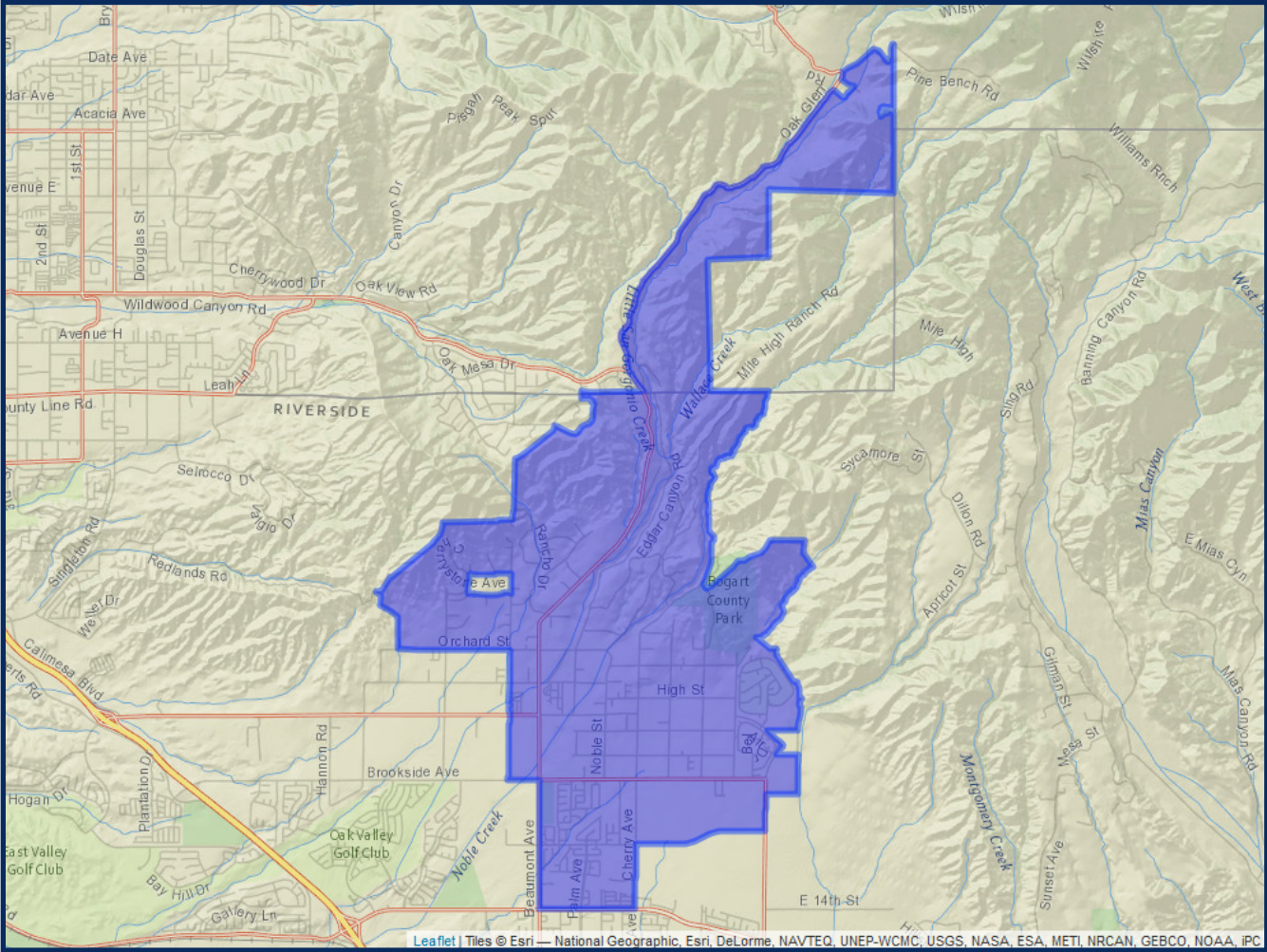
# EDIVISIONING BCVWD SCENARIO 2 - ADJUSTED





# 2REDISTRICTING BCVWD SCENARIO 2 - ADJUSTED

## DIVISION 1



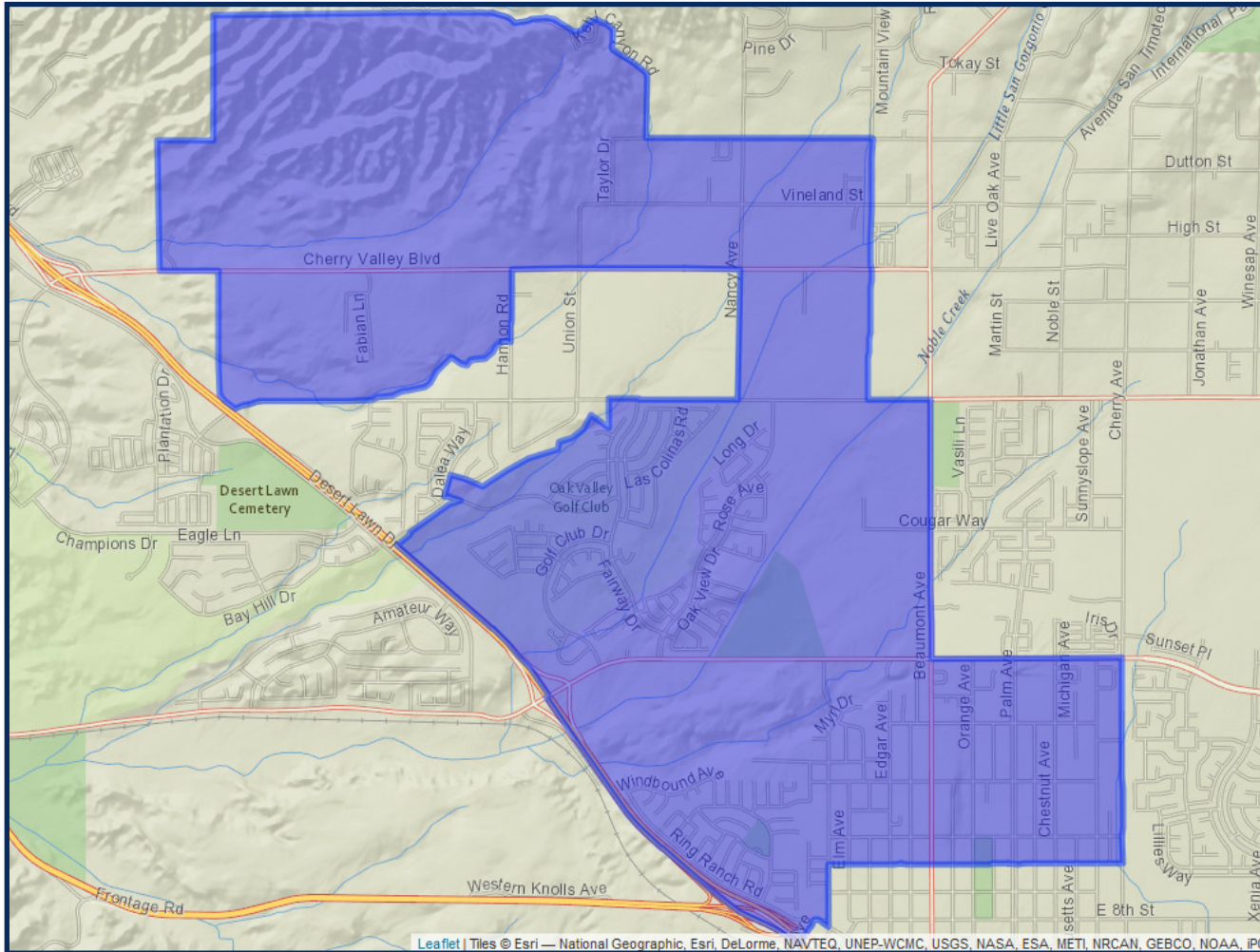
	2020 Count*	2019 CVAP*
Total	11,886	8,000
White	49.65%	59.03%
Black	4.68%	7.73%
Asian	3.99%	3.45%
Hispanic	36.61%	29.68%



\*Adjusted for prisoner reallocation

# REDISTRICTING BCVWD SCENARIO 2 - ADJUSTED

## DIVISION 2

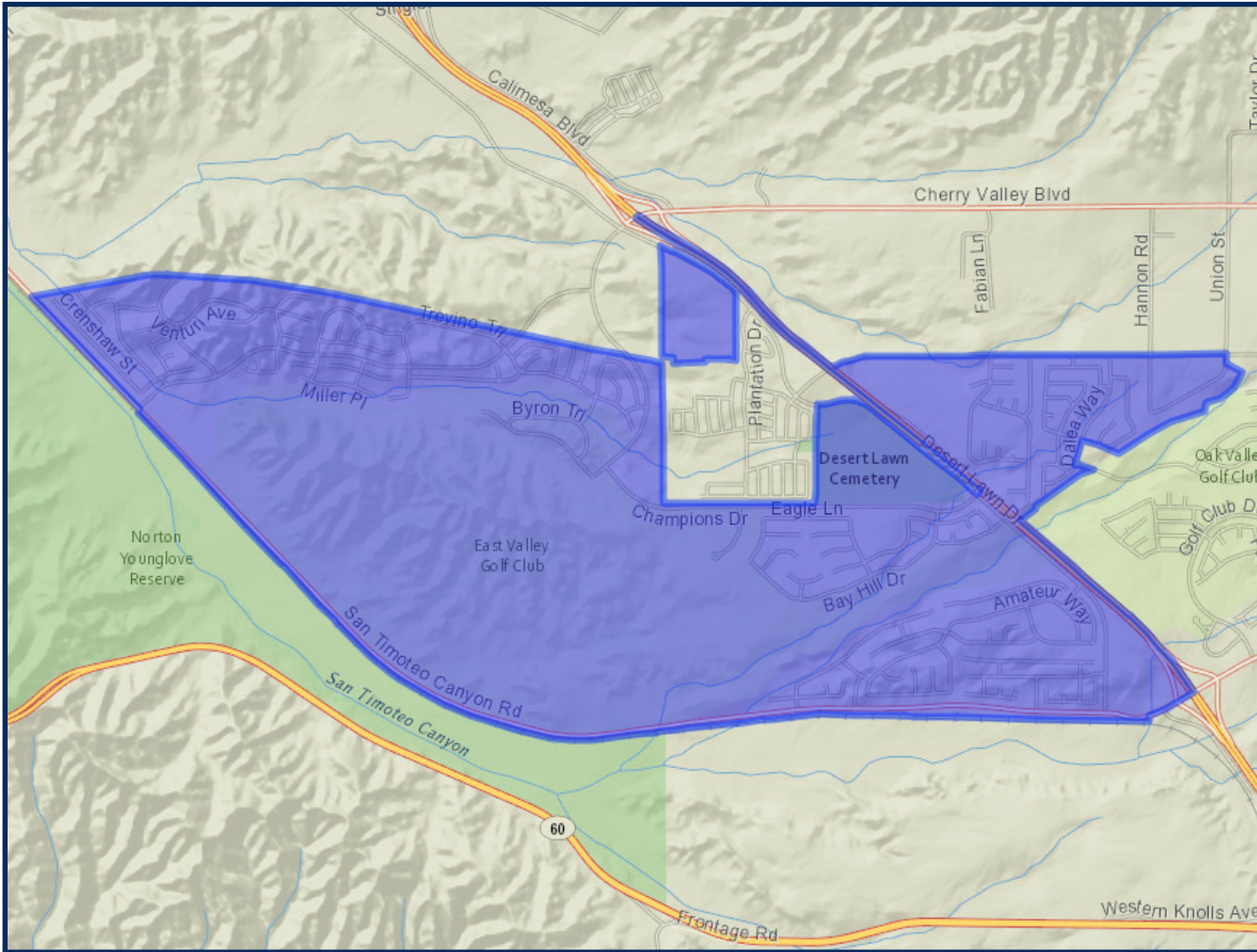


	2020 Count*	2019 CVAP*
Total	11,669	7,933
White	46.35%	50.69%
Black	3.59%	5.47%
Asian	4.36%	3.82%
Hispanic	40.59%	39.24%



# REDISTRICTING BCVWD SCENARIO 2 - ADJUSTED

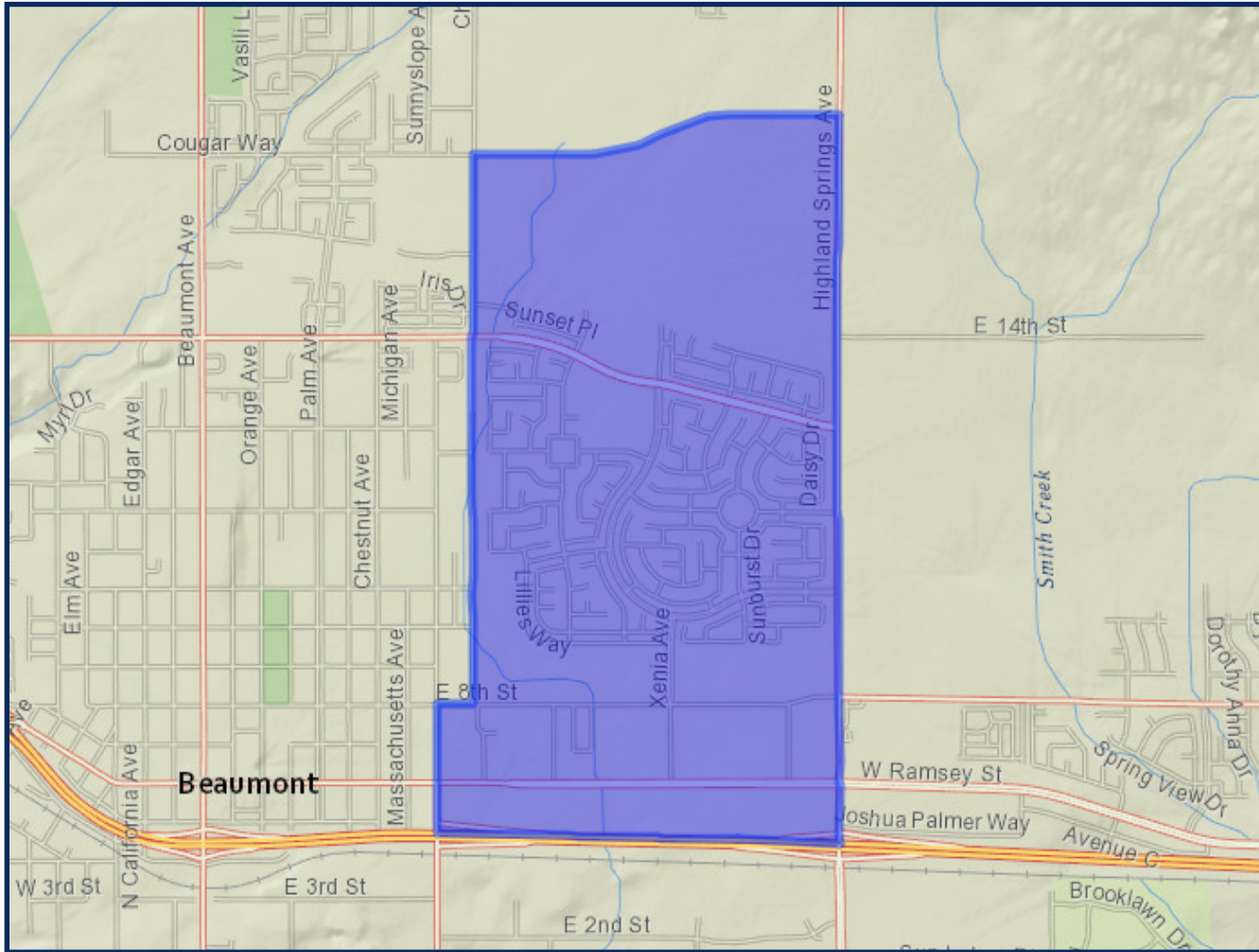
## DIVISION 3



	2020 Count*	2019 CVAP*
Total	12,024	6,334
White	36.43%	40.39%
Black	8.97%	5.97%
Asian	11.68%	11.78%
Hispanic	37.21%	37.70%

# REDISTRICTING BCVWD SCENARIO 2 - ADJUSTED

## DIVISION 4

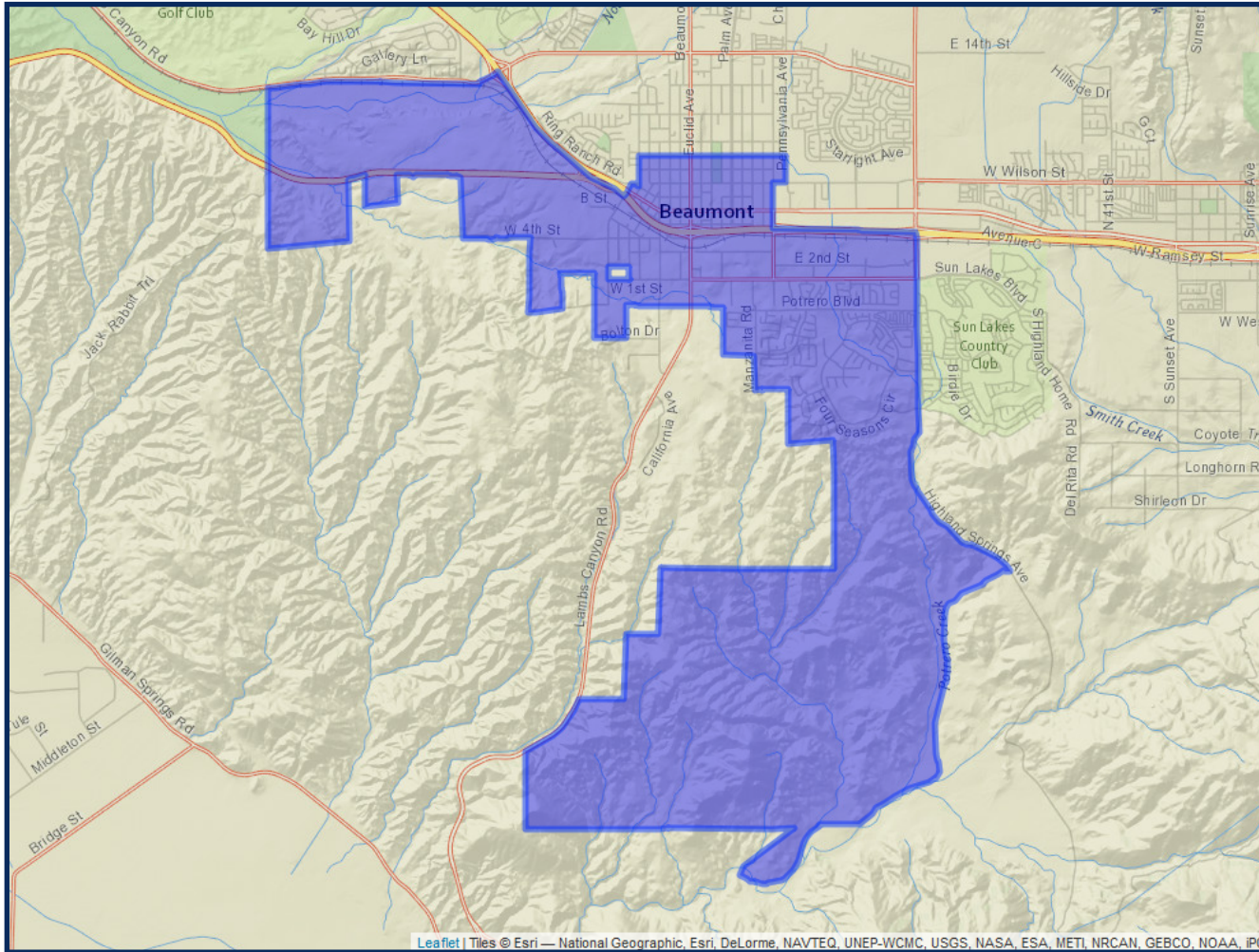


	2020 Count*	2019 CVAP*
Total	12,078	6,784
White	28.58%	26.22%
Black	10.68%	14.52%
Asian	11.63%	11.10%
Hispanic	43.33%	44.49%



# REDISTRICTING BCVWD SCENARIO 2 - ADJUSTED

## DIVISION 5



	2020 Count*	2019 CVAP*
Total	12,182	7,791
White	36.32%	45.72%
Black	7.95%	9.56%
Asian	6.66%	6.48%
Hispanic	44.39%	34.12%

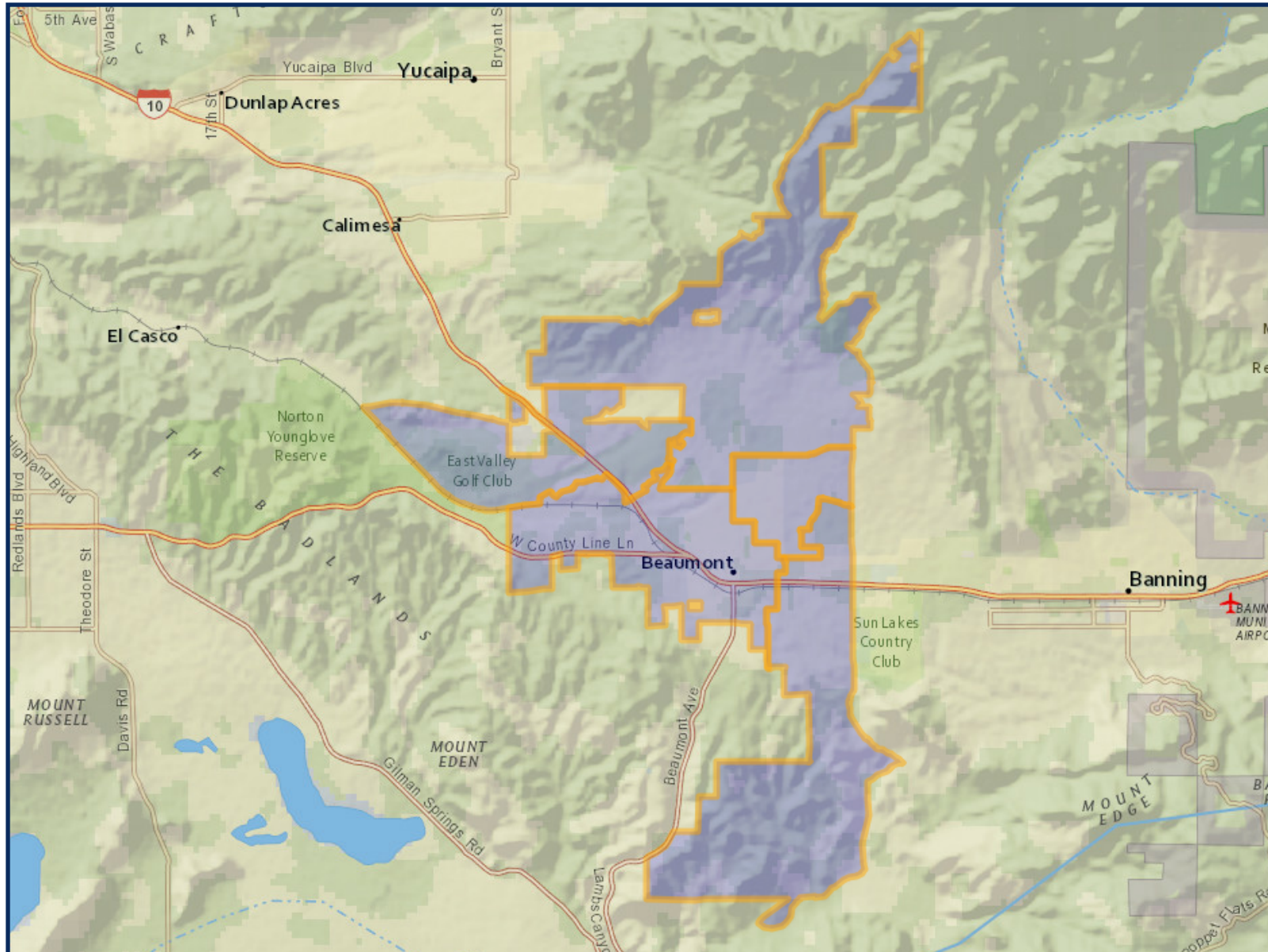
# REDISTRICTING BCVWD SCENARIO 3 - ADJUSTED

	DIVISION 1	DIVISION 2	DIVISION 3	DIVISION 4	DIVISION 5
2020 Census Count*	11,885	12,032	12,007	12,042	11,873
Deviation #	-83	64	39	74	-95
Deviation %	-0.7%	0.5%	0.3%	0.6%	-0.8%
2010 Census Count	9,877	6,967	8,839	8,070	9,520
2019 CVAP*	8,587	6,792	6,871	8,138	6,454
2010 CVAP	6,849	3,857	4,905	3,901	5,326



\*Adjusted for prisoner reallocation

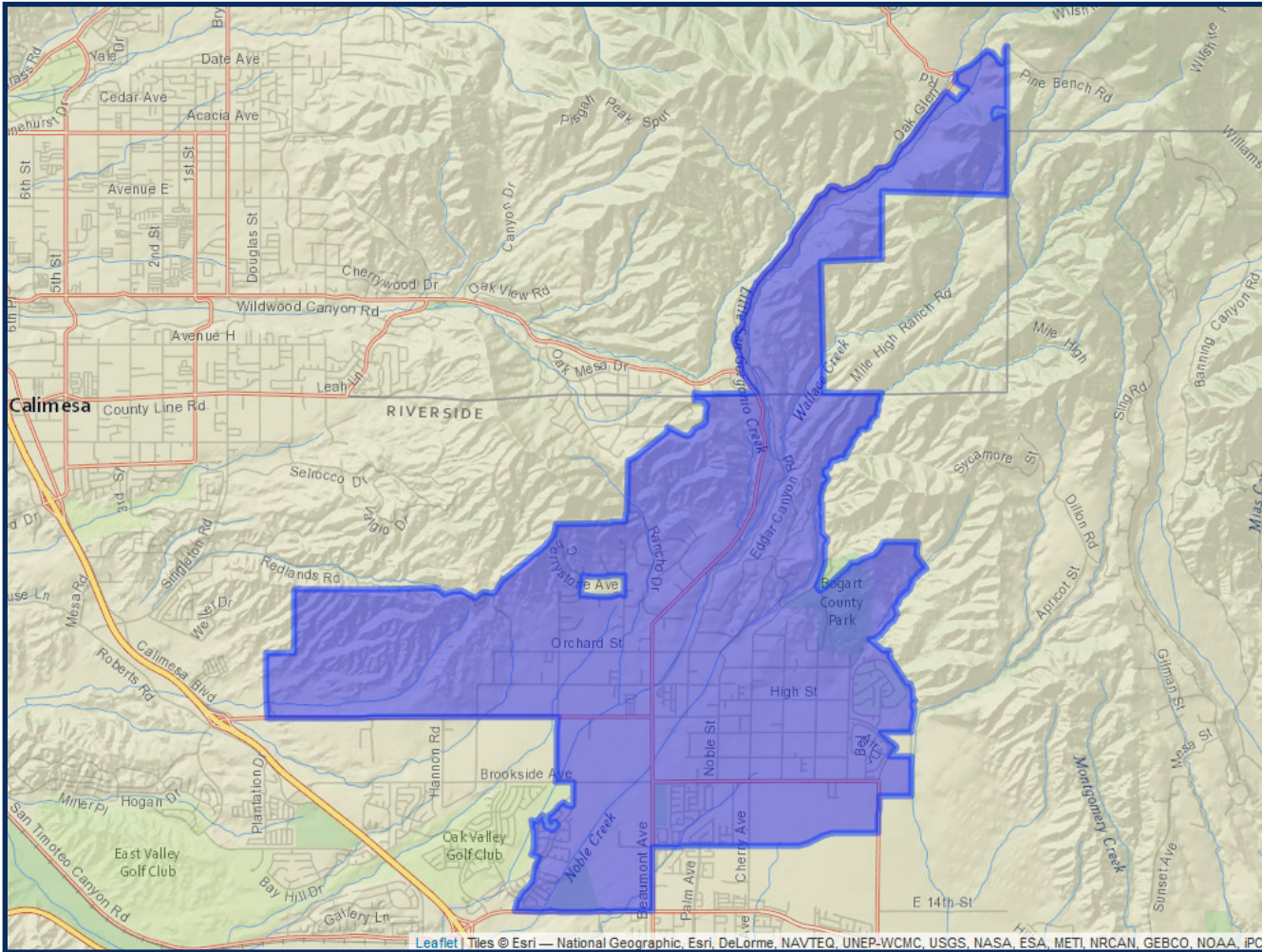
# EDIVISIONING BCVWD SCENARIO 3 - ADJUSTED





# 2REDISTRICTING BCVWD SCENARIO 3 - ADJUSTED

## DIVISION 1

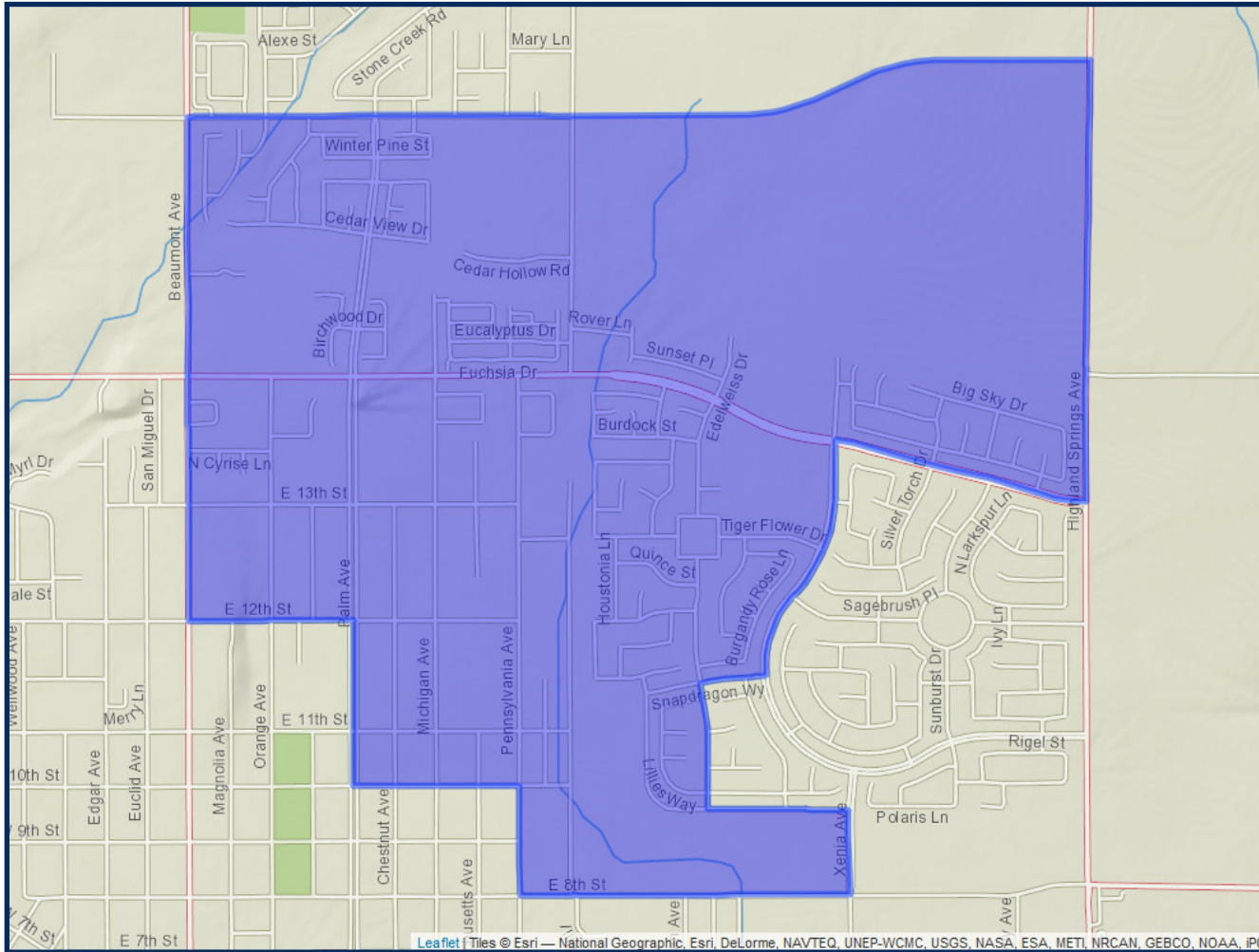


	2020 Count*	2019 CVAP*
Total	11,885	8,587
White	53.86%	60.34%
Black	3.86%	7.05%
Asian	3.96%	2.24%
Hispanic	32.99%	30.02%



# REDISTRICTING BCVWD SCENARIO 3 - ADJUSTED

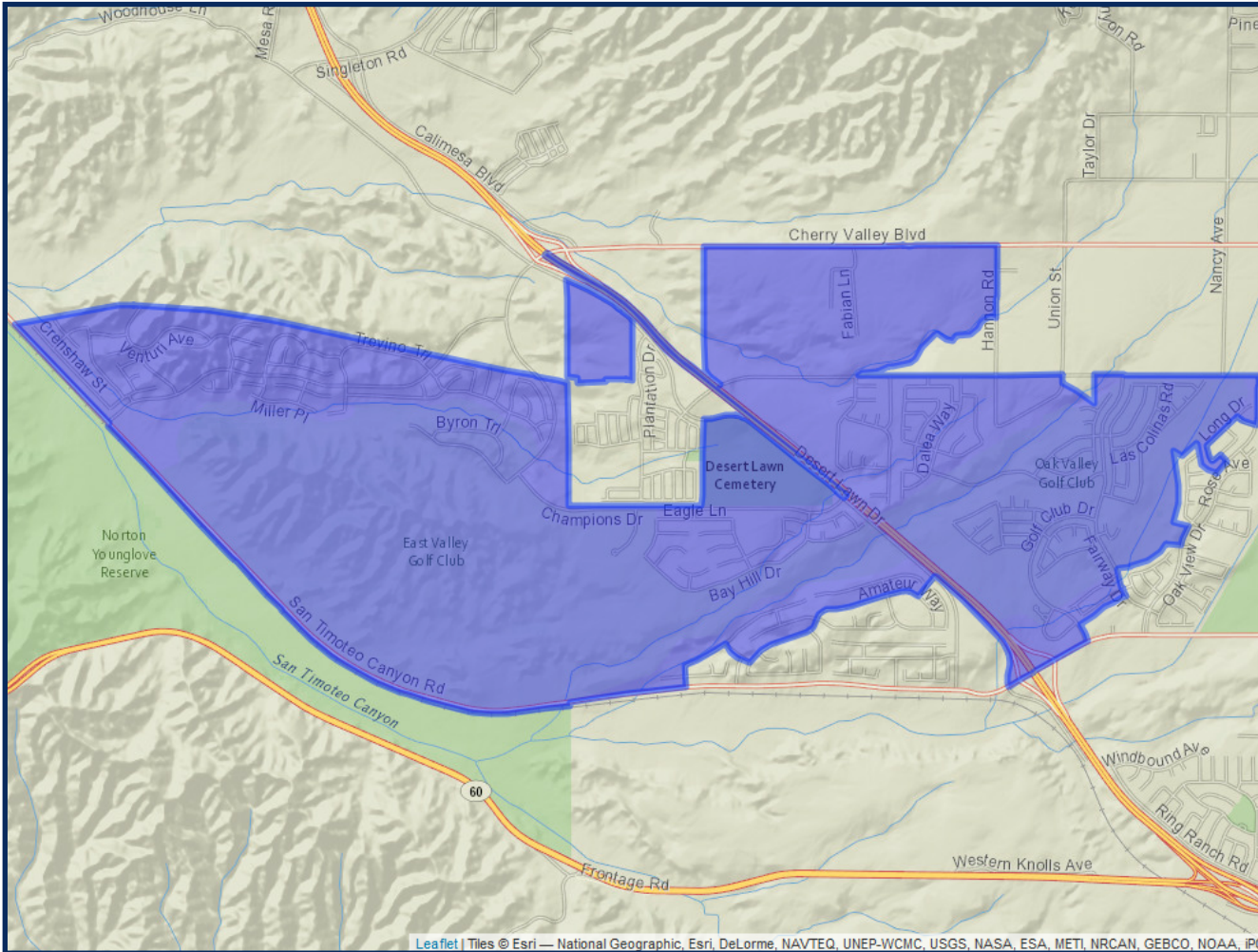
## DIVISION 2



	2020 Count*	2019 CVAP*
Total	12,032	6,792
White	28.97%	34.67%
Black	8.52%	12.12%
Asian	9.51%	6.15%
Hispanic	47.91%	43.74%

# REDISTRICTING BCVWD SCENARIO 3 - ADJUSTED

## DIVISION 3

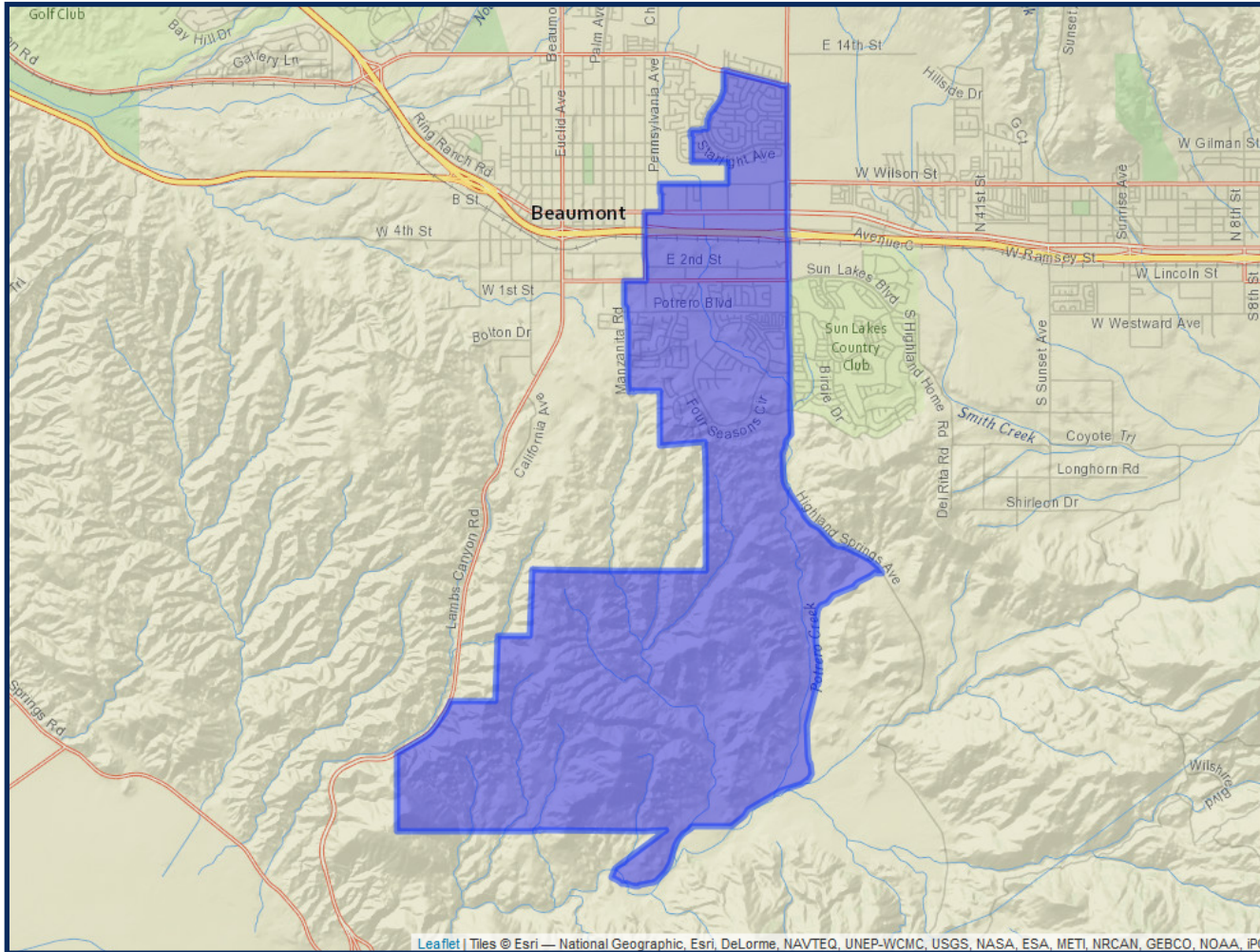


	2020 Count*	2019 CVAP*
Total	12,007	6,871
White	41.83%	46.88%
Black	8.24%	5.97%
Asian	10.21%	10.29%
Hispanic	33.90%	32.86%



# REDISTRICTING BCVWD SCENARIO 3 - ADJUSTED

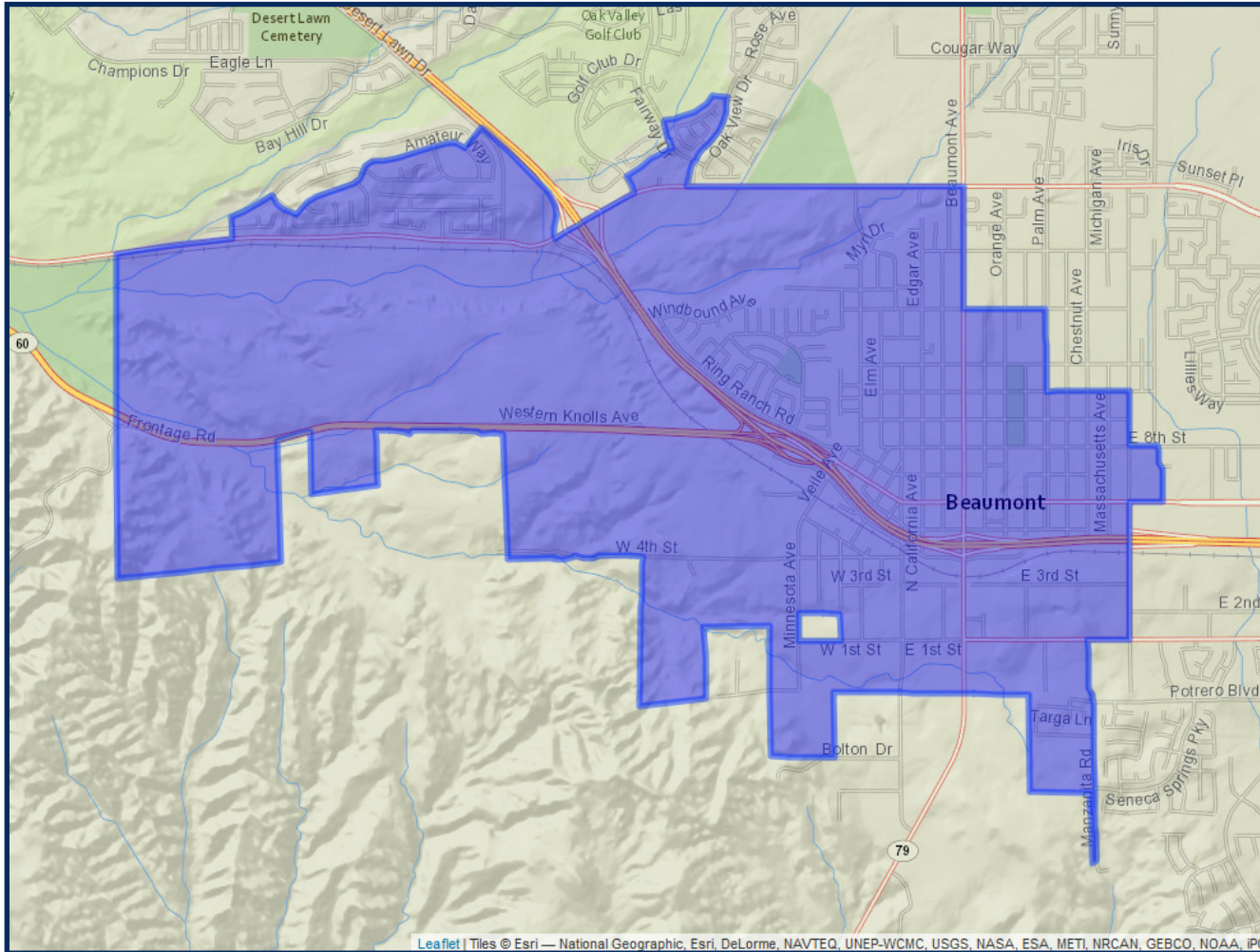
## DIVISION 4



	2020 Count*	2019 CVAP*
Total	12,042	8,138
White	39.82%	41.68%
Black	9.51%	12.28%
Asian	8.44%	11.27%
Hispanic	37.17%	32.08%

# REDISTRICTING BCVWD SCENARIO 3 - ADJUSTED

## DIVISION 5



	2020 Count*	2019 CVAP*
Total	11,873	6,454
White	32.54%	38.63%
Black	5.84%	5.00%
Asian	6.28%	5.41%
Hispanic	50.29%	48.54%

# REDISTRICTING BCVWD SCENARIO 4 - ADJUSTED

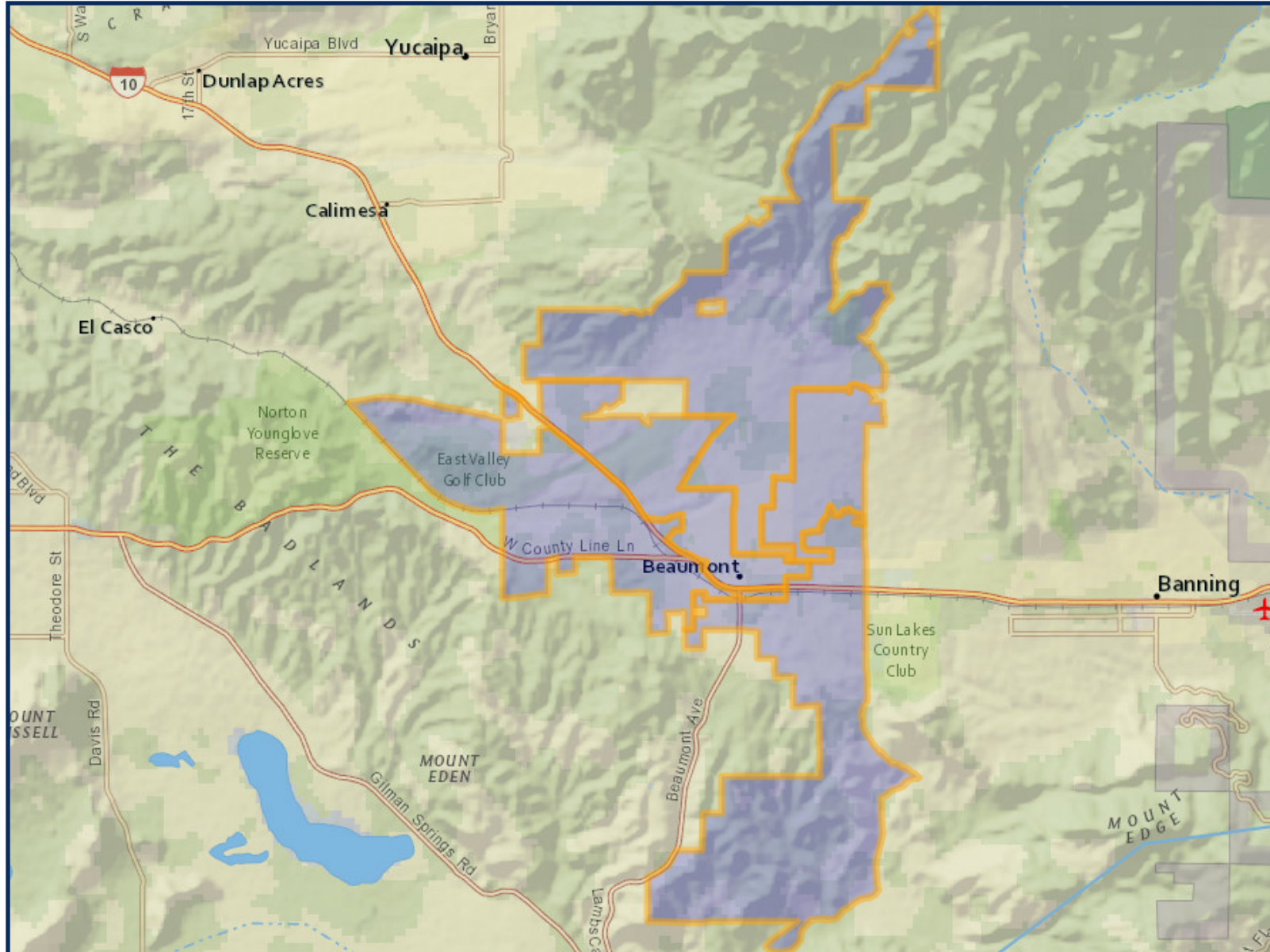
	DIVISION 1	DIVISION 2	DIVISION 3	DIVISION 4	DIVISION 5
2020 Census Count*	12,130	11,857	11,930	11,963	11,959
Deviation #	162	-111	-38	-5	-9
Deviation %	1.3%	-0.9%	-0.3%	-0.0%	-0.1%
2010 Census Count	11,653	5,396	11,368	6,857	7,999
2019 CVAP*	8,948	6,352	7,267	6,235	8,040
2010 CVAP	7,586	3,094	7,415	2,947	3,798



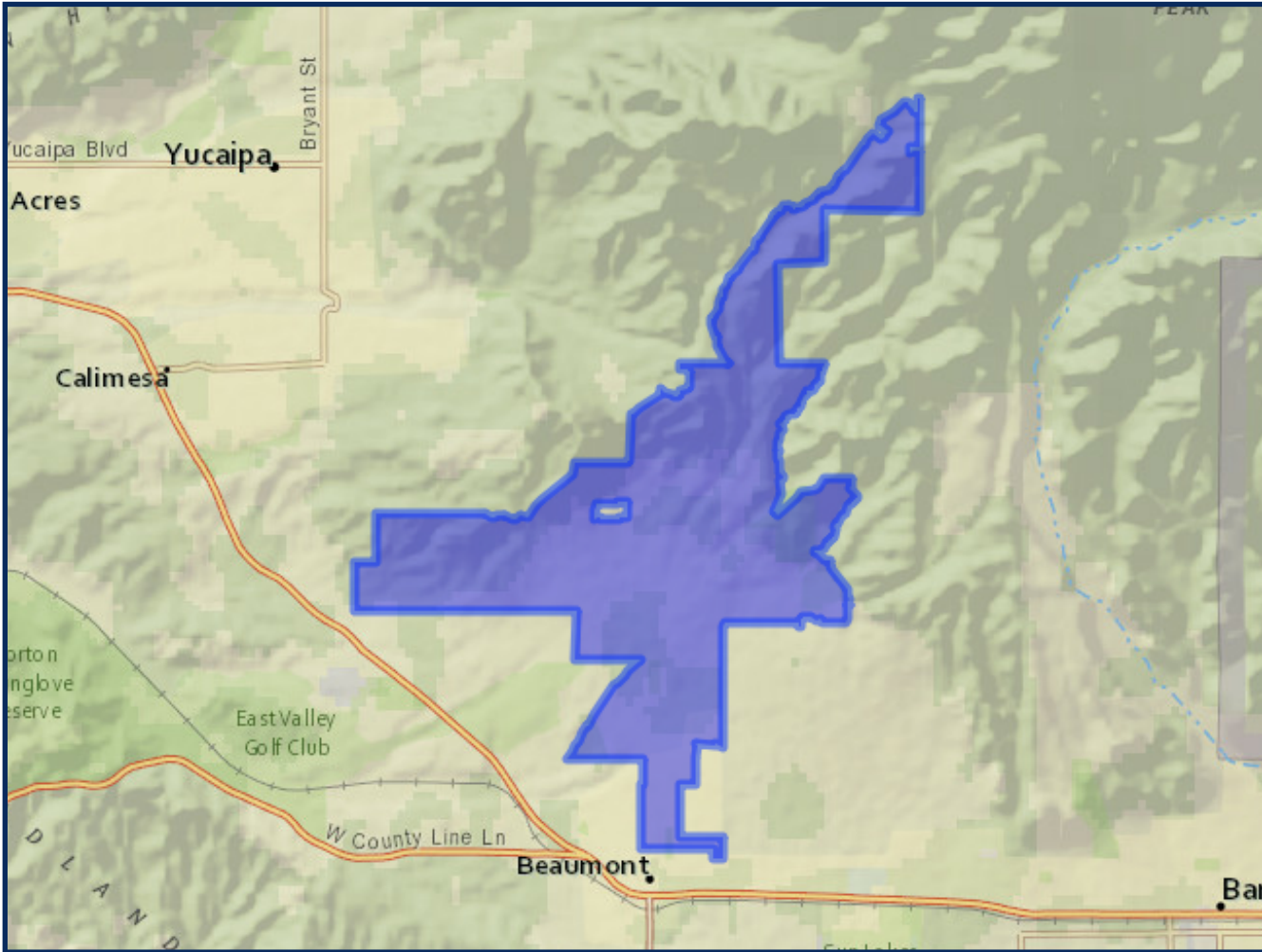
\*Adjusted for prisoner reallocation



# EDIVISIONING BCVWD SCENARIO 4 - ADJUSTED



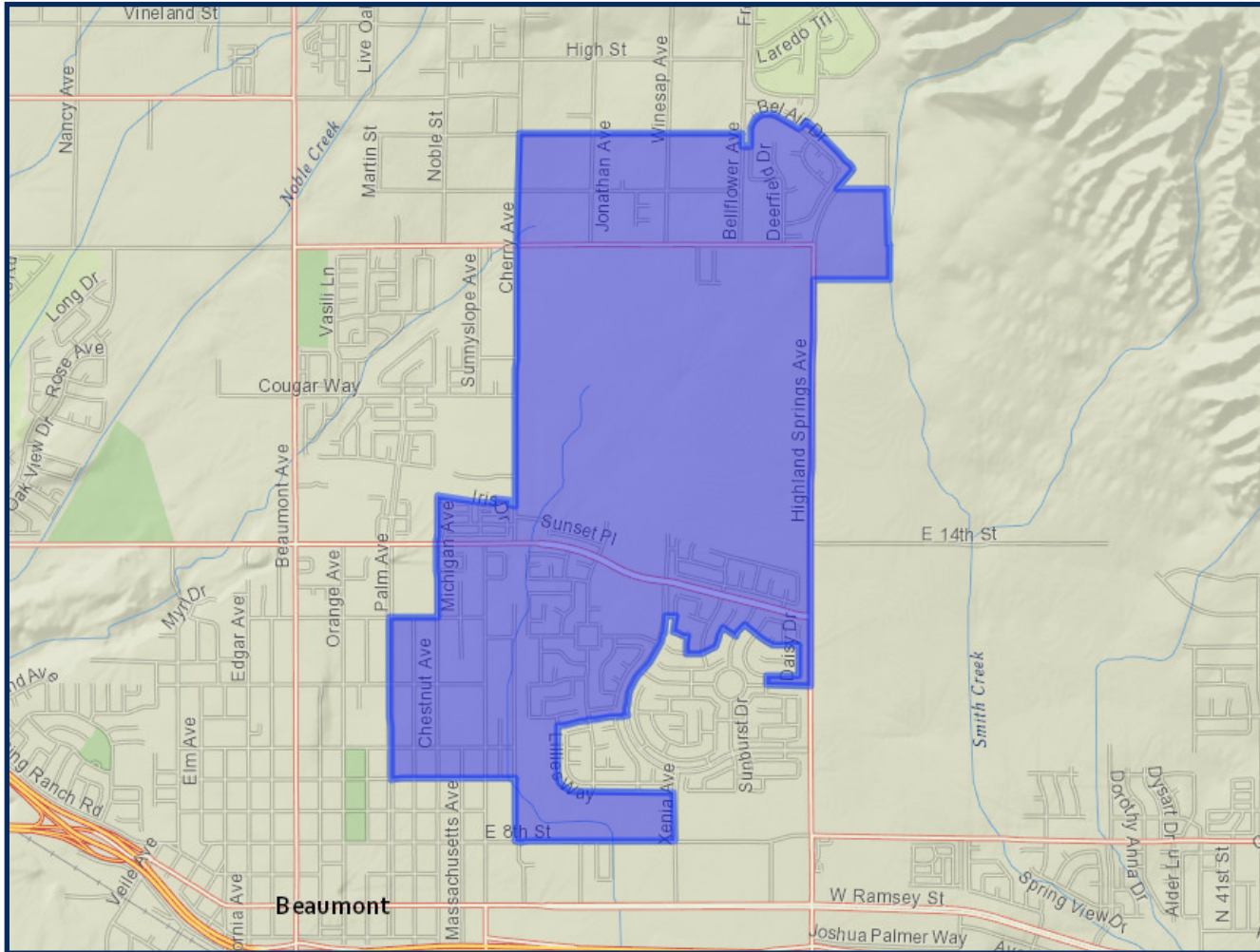
## DIVISION 1



	2020 Count*	2019 CVAP*
Total	12,130	8,948
White	49.54%	55.60%
Black	3.19%	6.41%
Asian	3.08%	3.25%
Hispanic	39.09%	33.66%

# REDISTRICTING BCVWD SCENARIO 4 - ADJUSTED

## DIVISION 2

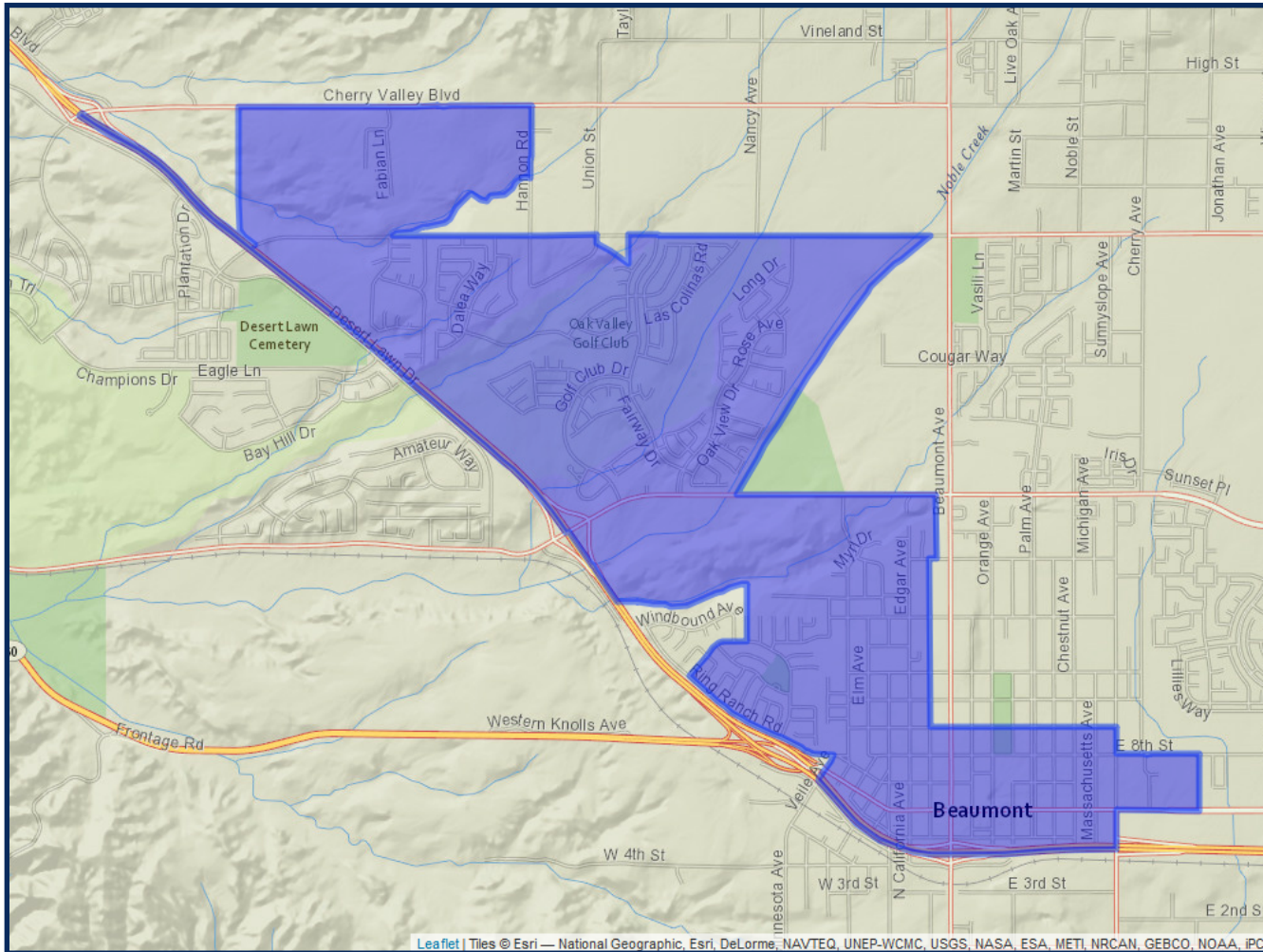


	2020 Count*	2019 CVAP*
Total	11,857	6,352
White	31.31%	39.47%
Black	9.12%	12.22%
Asian	10.63%	5.73%
Hispanic	43.66%	39.37%



# REDISTRICTING BCVWD SCENARIO 4 - ADJUSTED

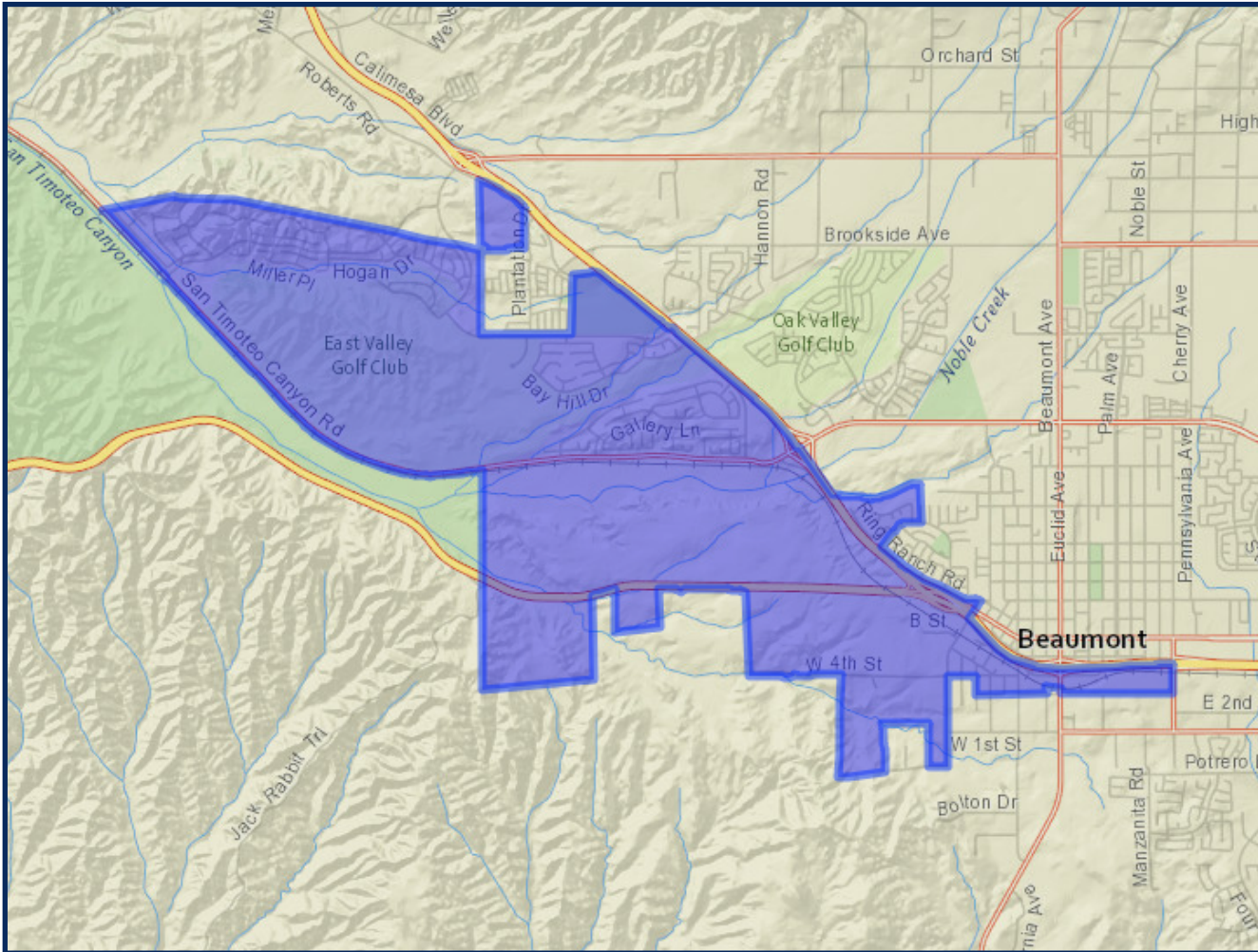
## DIVISION 3



	2020 Count*	2019 CVAP*
Total	11,930	7,267
White	41.28%	46.75%
Black	5.10%	6.55%
Asian	4.97%	4.39%
Hispanic	43.25%	41.17%

# REDISTRICTING BCVWD SCENARIO 4 - ADJUSTED

## DIVISION 4

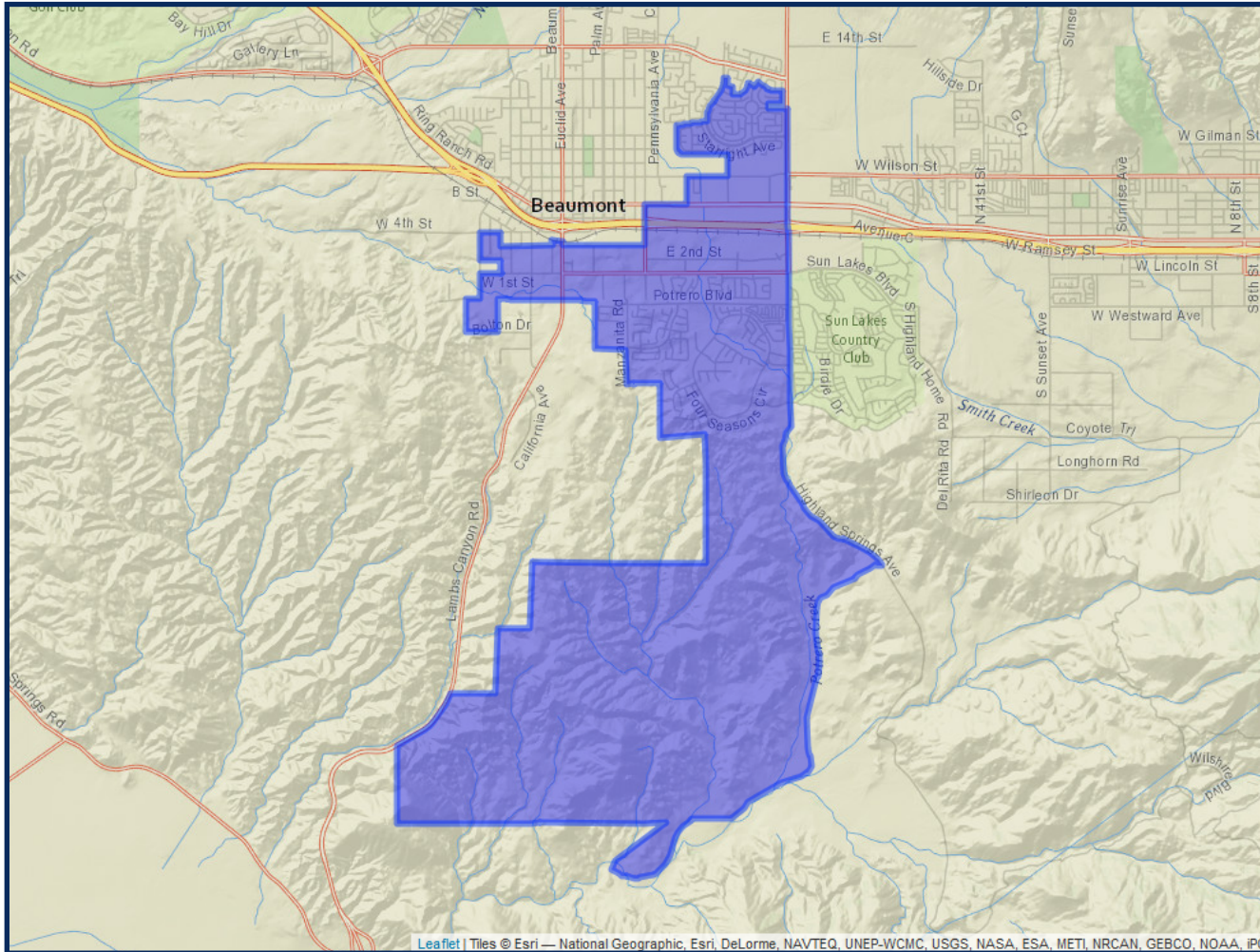


	2020 Count*	2019 CVAP*
Total	11,963	6,235
White	34.74%	37.47%
Black	9.14%	5.71%
Asian	11.41%	11.90%
Hispanic	38.95%	39.98%



# REDISTRICTING BCVWD SCENARIO 4 - ADJUSTED

## DIVISION 5



	2020 Count*	2019 CVAP*
Total	11,959	8,040
White	39.84%	42.62%
Black	9.54%	12.16%
Asian	8.46%	10.78%
Hispanic	37.34%	31.75%

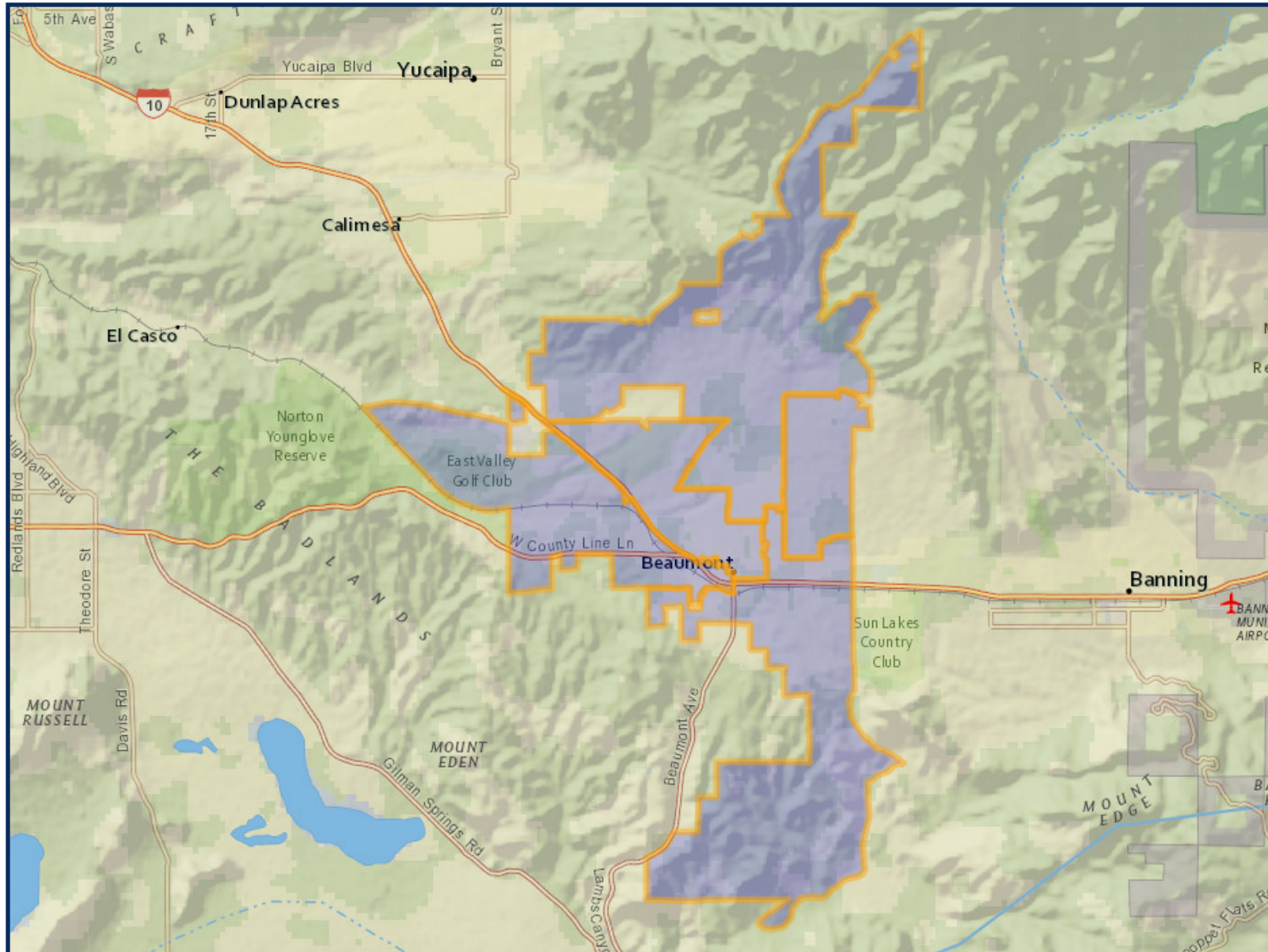
# REDISTRICTING BCVWD SCENARIO 5 - ADJUSTED

	DIVISION 1	DIVISION 2	DIVISION 3	DIVISION 4	DIVISION 5
2020 Census Count*	11,819	12,216	11,870	12,045	11,889
Deviation #	-149	248	-98	77	-79
Deviation %	-1.3%	2.0%	-0.8%	0.6%	-0.7%
2010 Census Count	11,450	5,355	11,362	8,277	6,829
2019 CVAP*	8,822	6,434	7,289	8,137	6,160
2010 CVAP	7,378	3,167	7,571	3,804	2,918



\*Adjusted for prisoner reallocation

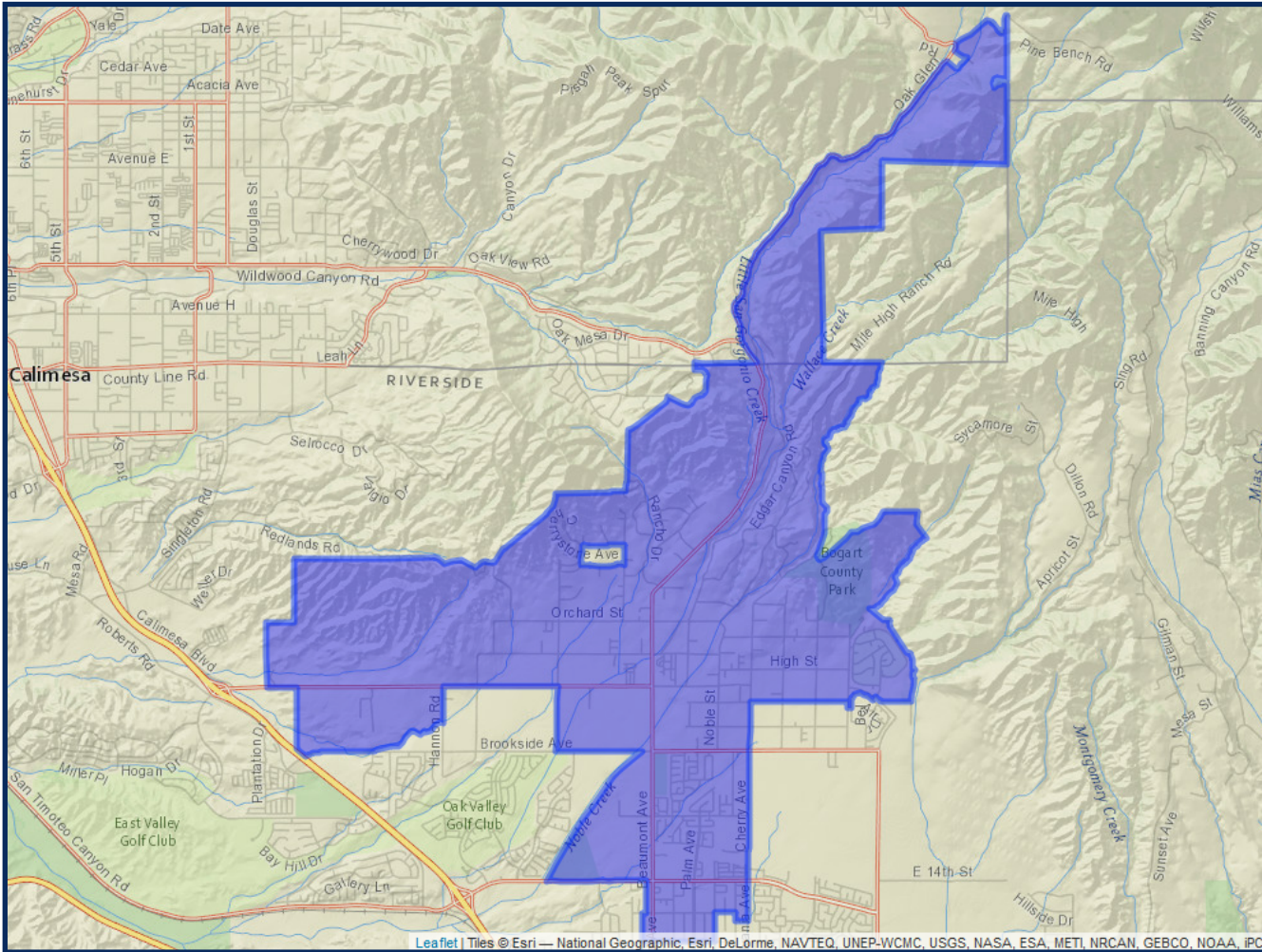
# EDIVISIONING BCVWD SCENARIO 5 - ADJUSTED





# 2REDISTRICTING BCVWD SCENARIO 5 - ADJUSTED

## DIVISION 1



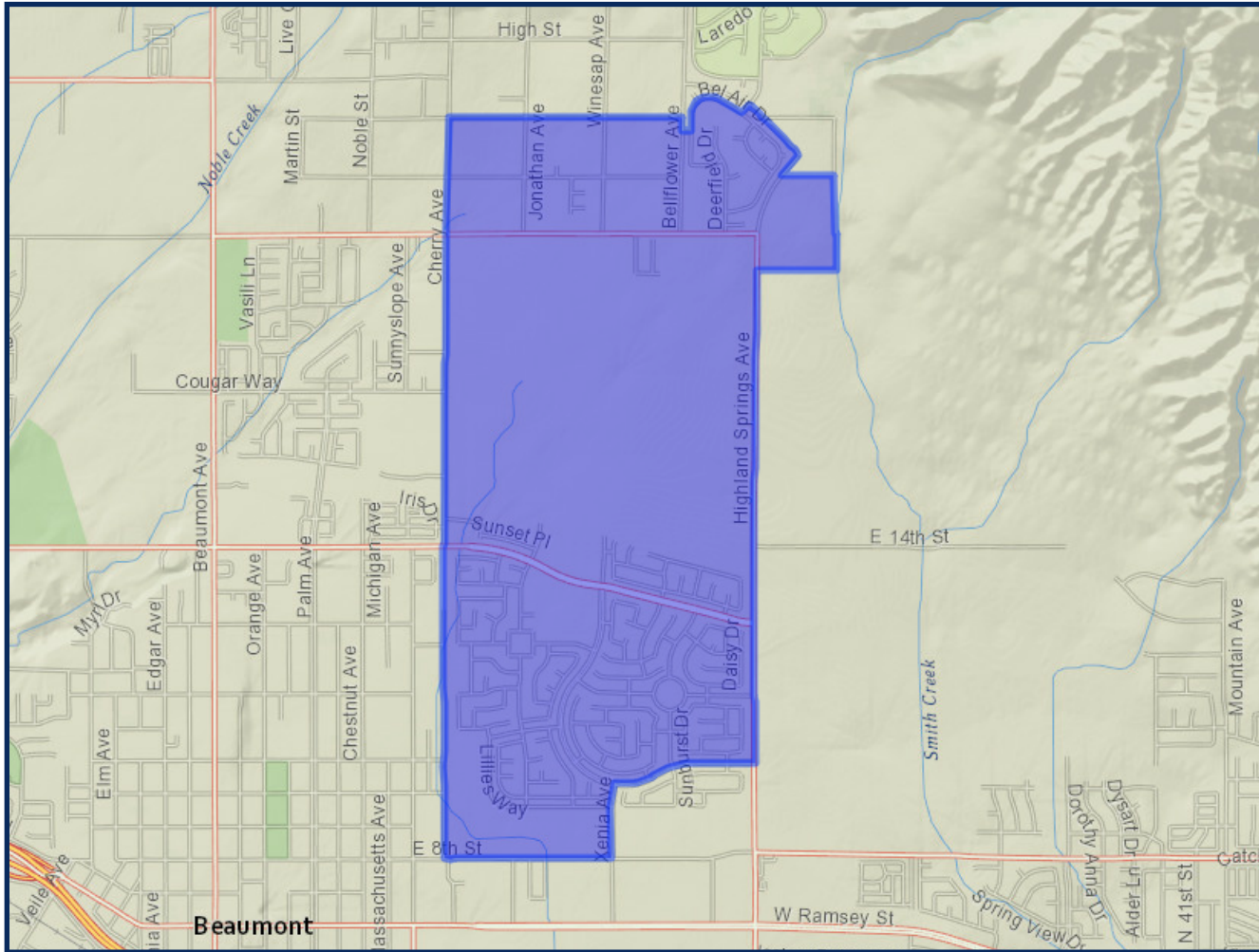
	2020 Count*	2019 CVAP*
Total	11,819	8,822
White	50.82%	56.96%
Black	3.35%	6.73%
Asian	2.94%	3.25%
Hispanic	37.78%	32.34%



\*Adjusted for prisoner reallocation

# REDISTRICTING BCVWD SCENARIO 5 - ADJUSTED

## DIVISION 2

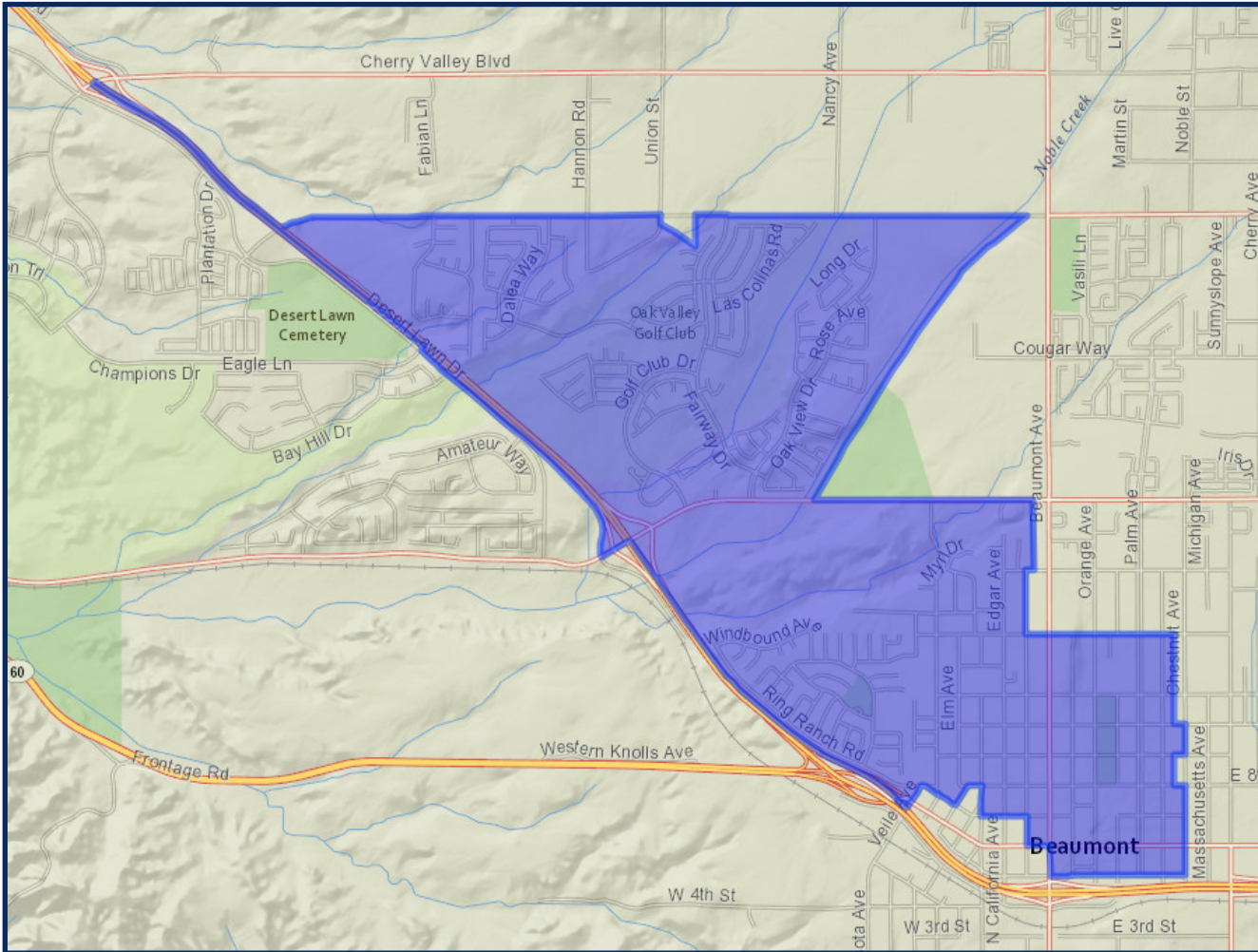


	2020 Count*	2019 CVAP*
Total	12,216	6,434
White	32.38%	34.16%
Black	9.97%	13.71%
Asian	11.76%	9.23%
Hispanic	40.12%	38.25%



# REDISTRICTING BCVWD SCENARIO 5 - ADJUSTED

## DIVISION 3

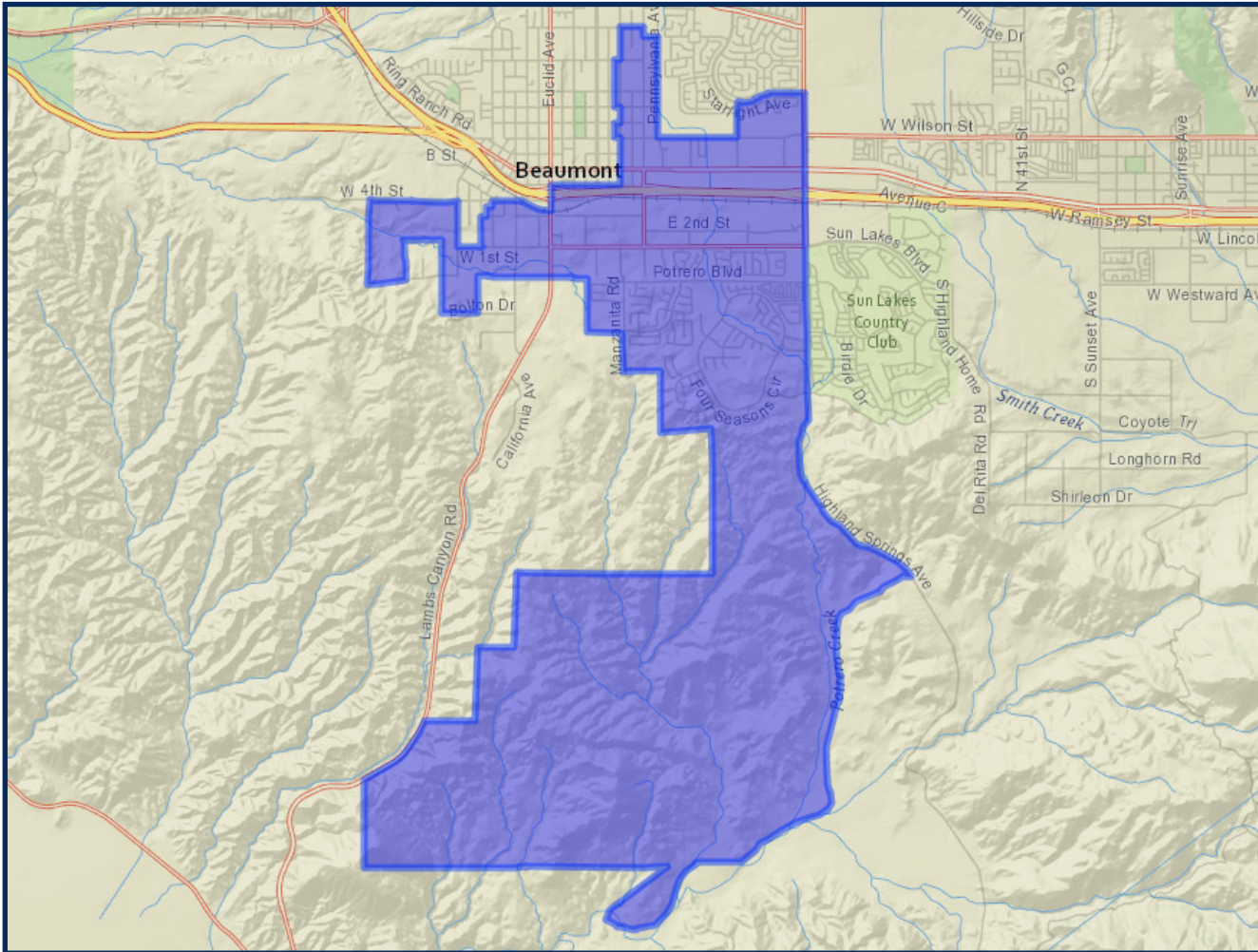


	2020 Count*	2019 CVAP*
Total	11,870	7,289
White	43.45%	48.76%
Black	3.90%	5.03%
Asian	5.03%	4.50%
Hispanic	42.33%	40.80%



# REDISTRICTING BCVWD SCENARIO 5 - ADJUSTED

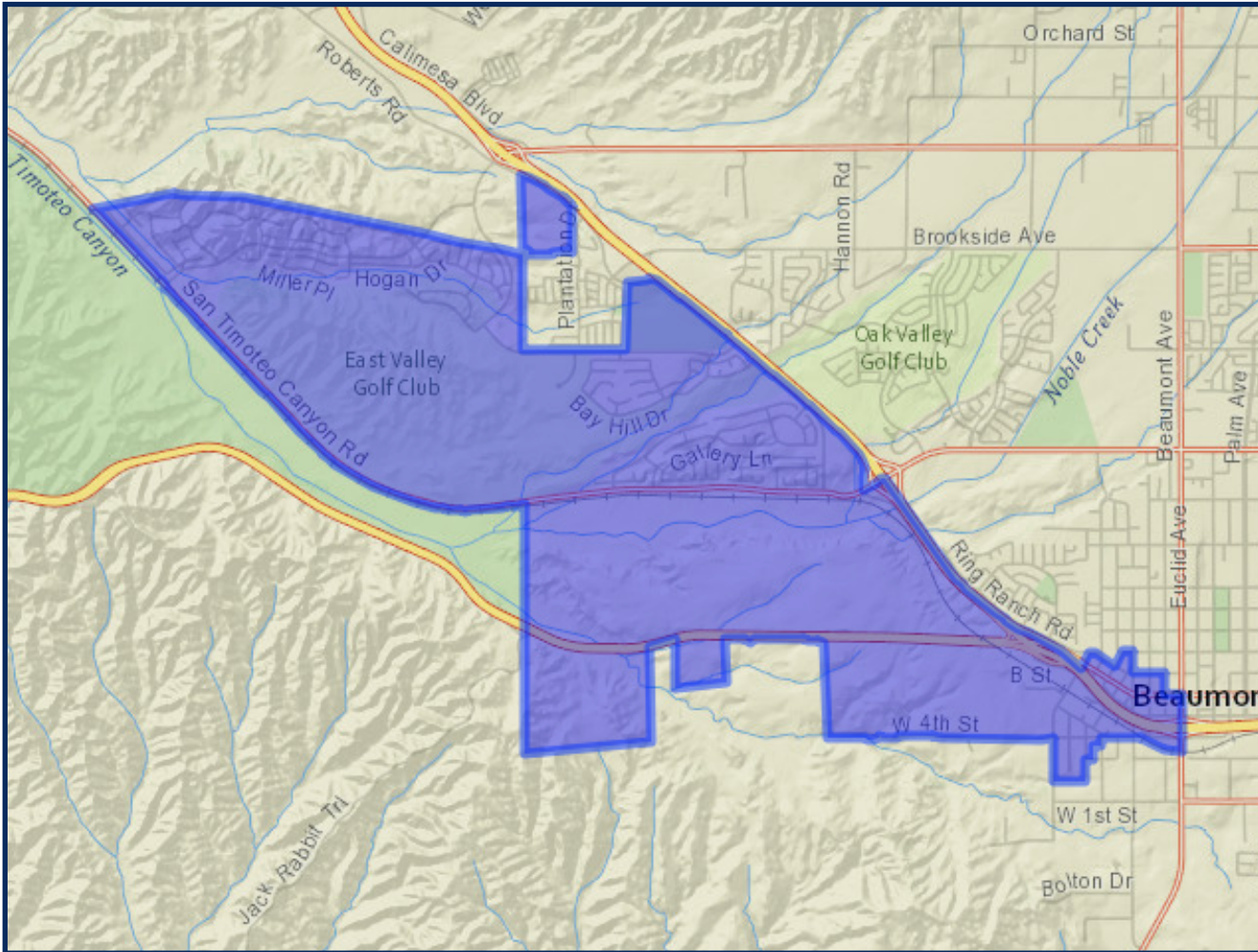
## DIVISION 4



	2020 Count*	2019 CVAP*
Total	12,045	8,137
White	36.71%	44.11%
Black	9.10%	11.38%
Asian	7.33%	7.94%
Hispanic	42.49%	34.60%

# REDISTRICTING BCVWD SCENARIO 5 - ADJUSTED

## DIVISION 5



	2020 Count*	2019 CVAP*
Total	11,889	6,160
White	33.85%	36.95%
Black	9.57%	6.35%
Asian	11.26%	11.82%
Hispanic	39.48%	39.74%