

# REDISTRICTING **BCVWD**

Draft Maps

*March, 2022*

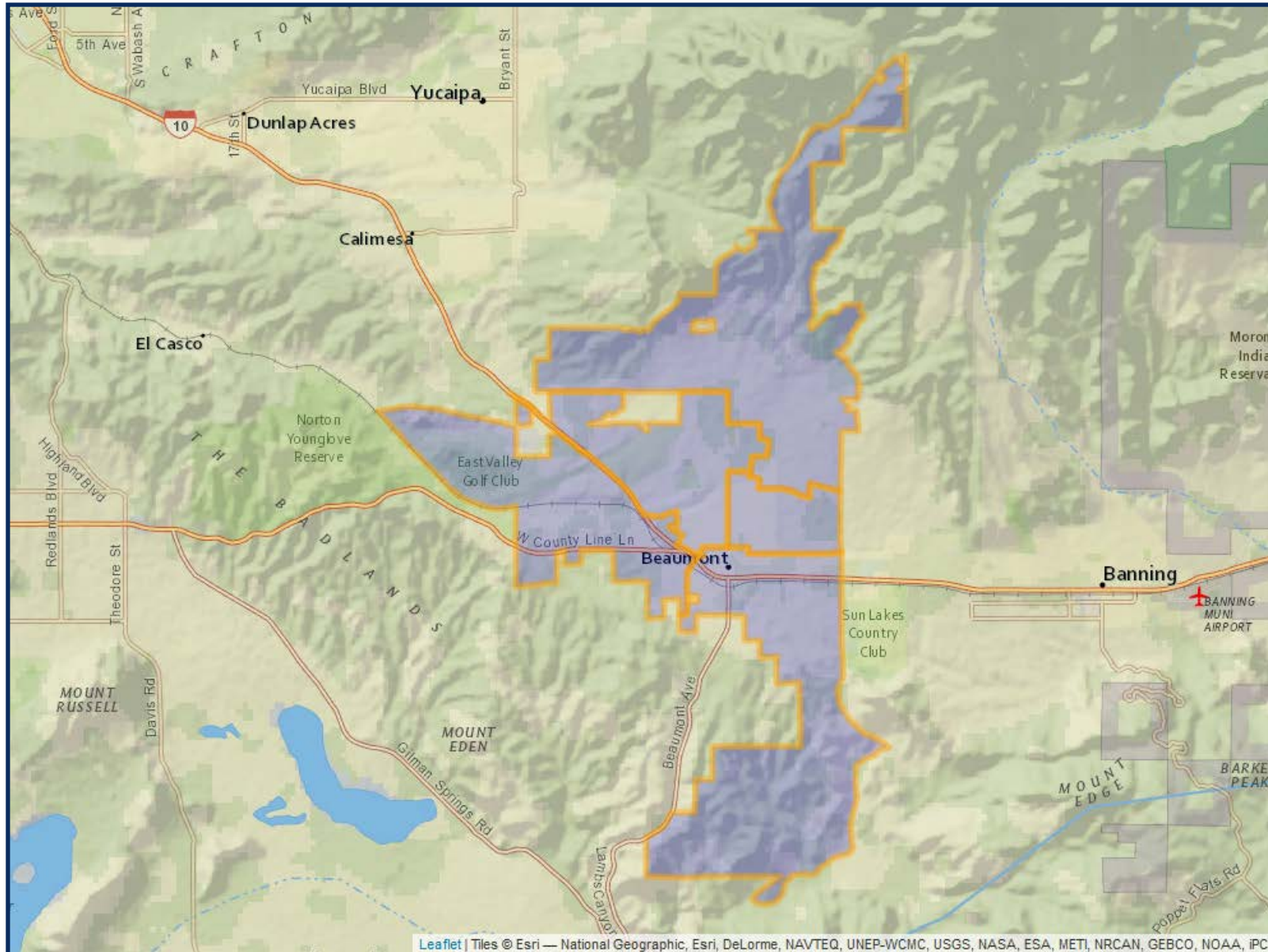
# REDISTRICTING BCVWD DRAFT I

	DIVISION 1	DIVISION 2	DIVISION 3	DIVISION 4	DIVISION 5
2020 Census Count*	11,948	11,815	12,117	11,755	12,204
Deviation #	-20	-153	149	-213	236
Deviation %	-0.2%	-1.3%	1.2%	-1.8%	2.0%
2010 Census Count	11,221	8,349	7,052	9,198	7,453
2019 CVAP*	7,972	7,559	6,260	7,543	7,508
2010 CVAP	7,489	3,991	3,031	4,945	5,383



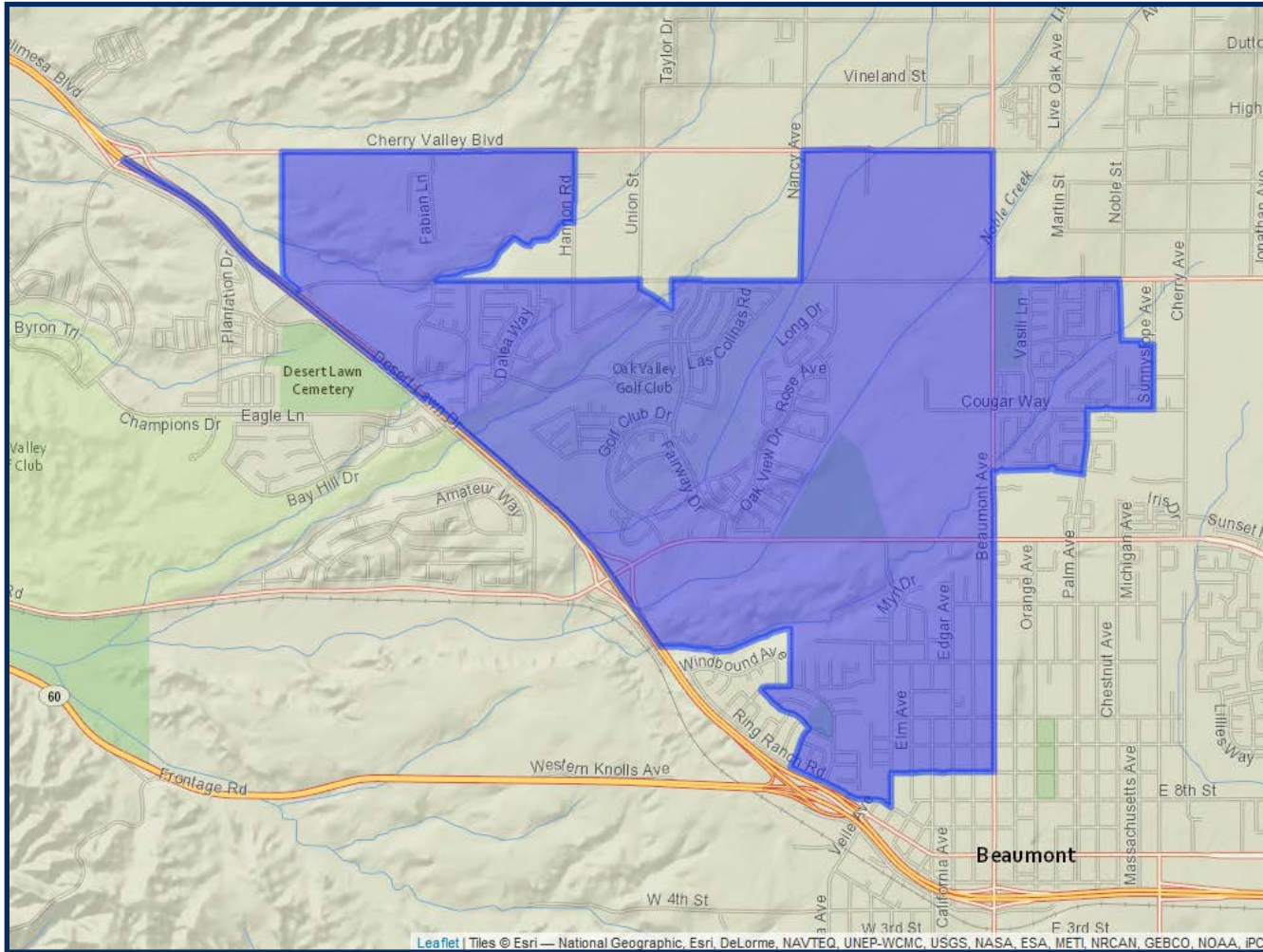
*\*Adjusted for prisoner reallocation*

# REDISTRICTING BCVWD DRAFT I



# REDISTRICTING BCVWD DRAFT I

## DIVISION 1

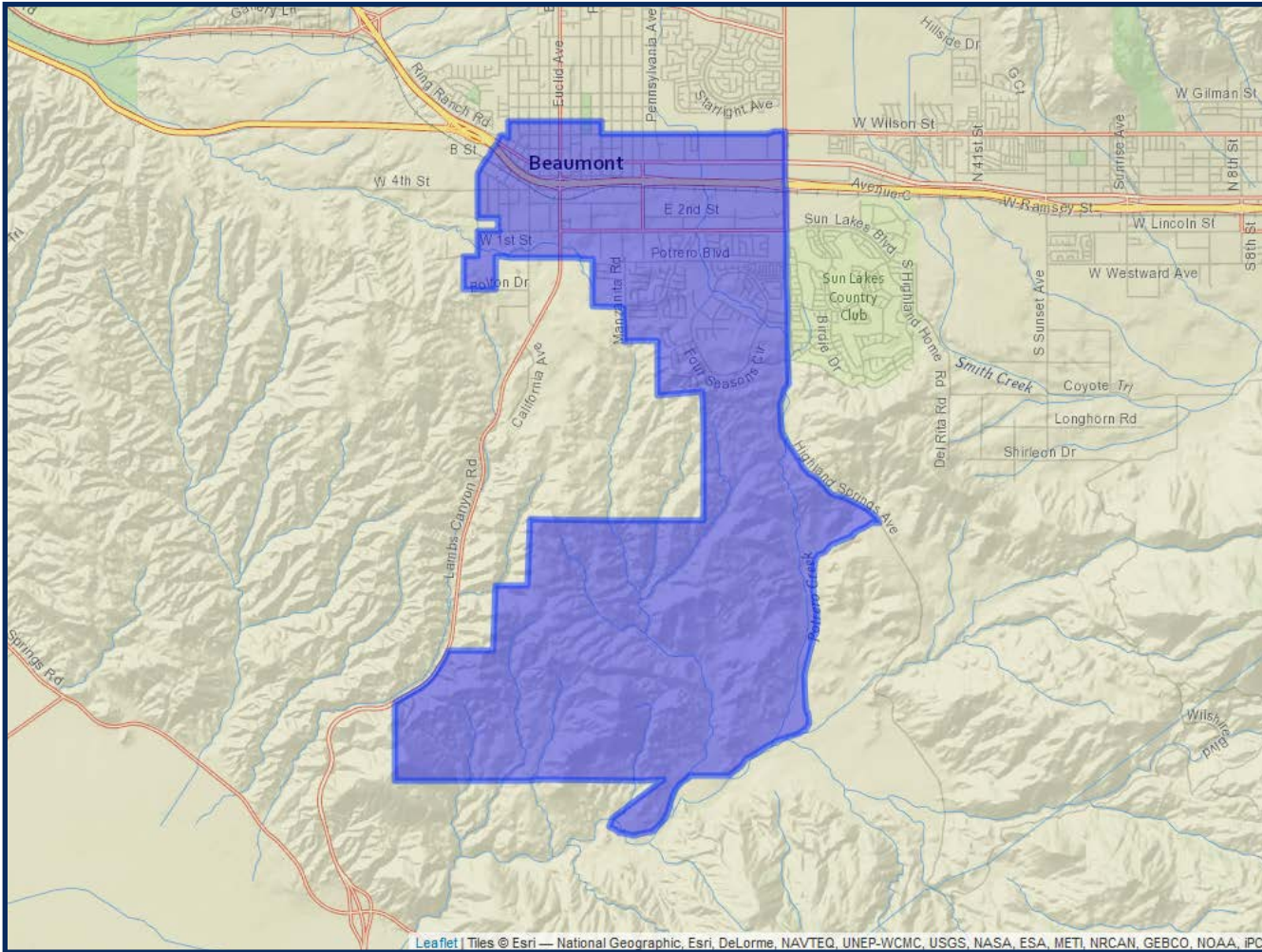


	2020 Count*	2019 CVAP*
Total	11,948	7,972
White	44.23%	46.63%
Black	4.62%	7.73%
Asian	5.22%	5.56%
Hispanic	40.51%	39.90%



# REDISTRICTING BCVWD DRAFT I

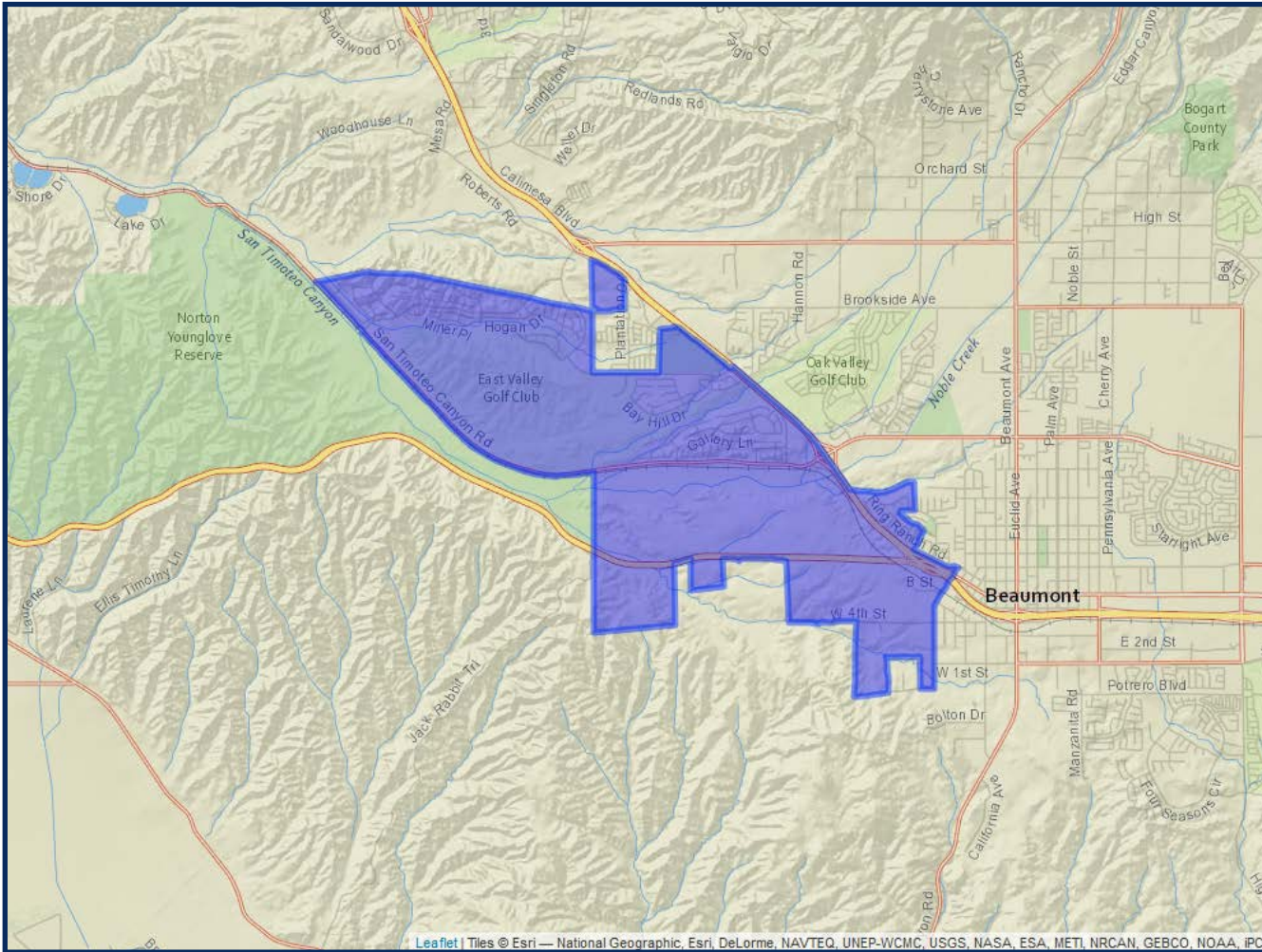
## DIVISION 2



	2020 Count*	2019 CVAP*
Total	11,815	7,559
White	36.43%	45.01%
Black	9.31%	11.79%
Asian	6.91%	7.21%
Hispanic	42.75%	33.51%

# REDISTRICTING BCVWD DRAFT I

## DIVISION 3

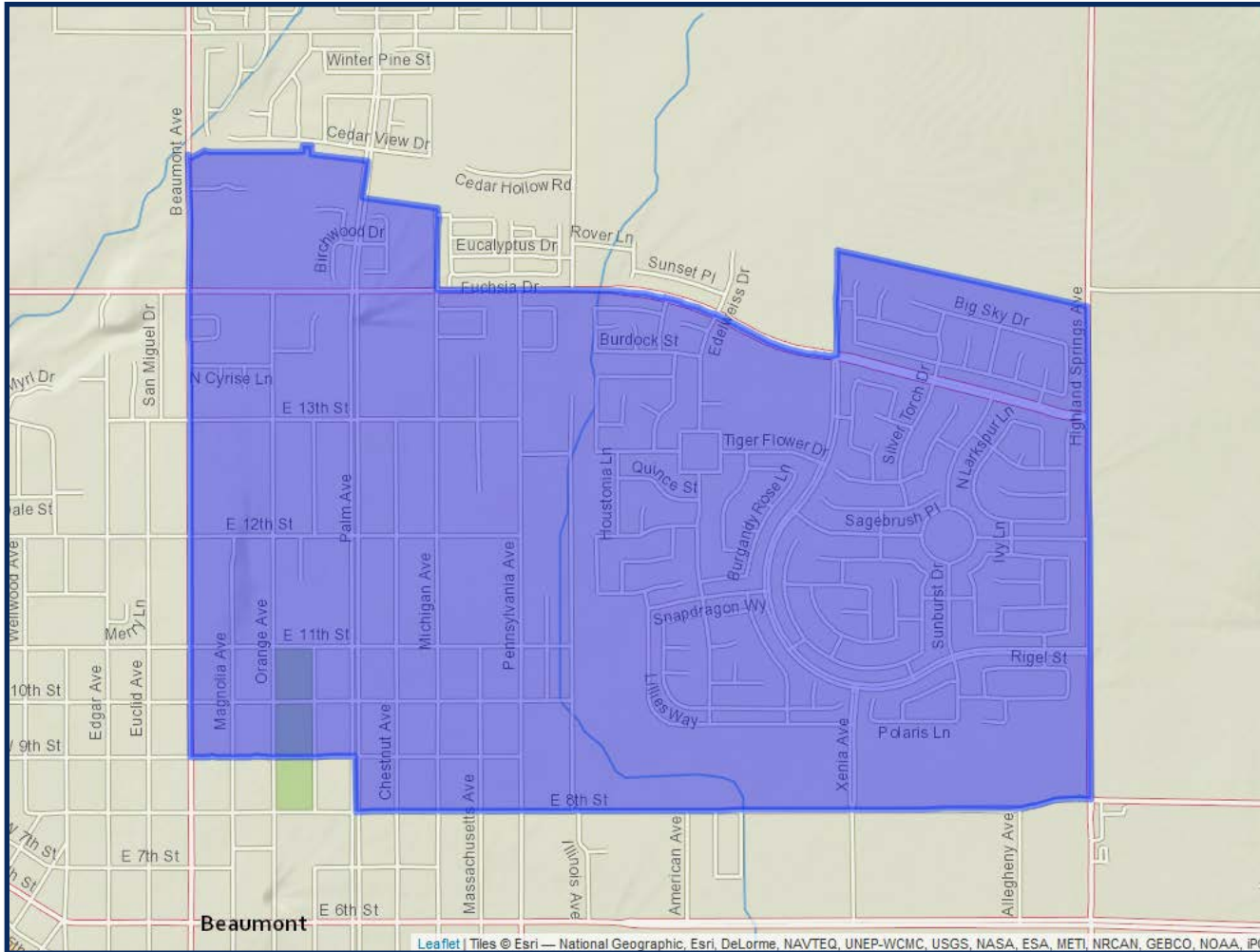


	2020 Count*	2019 CVAP*
Total	12,117	6,260
White	35.16%	37.97%
Black	9.16%	5.72%
Asian	11.23%	12.01%
Hispanic	38.76%	39.71%



# REDISTRICTING BCVWD DRAFT I

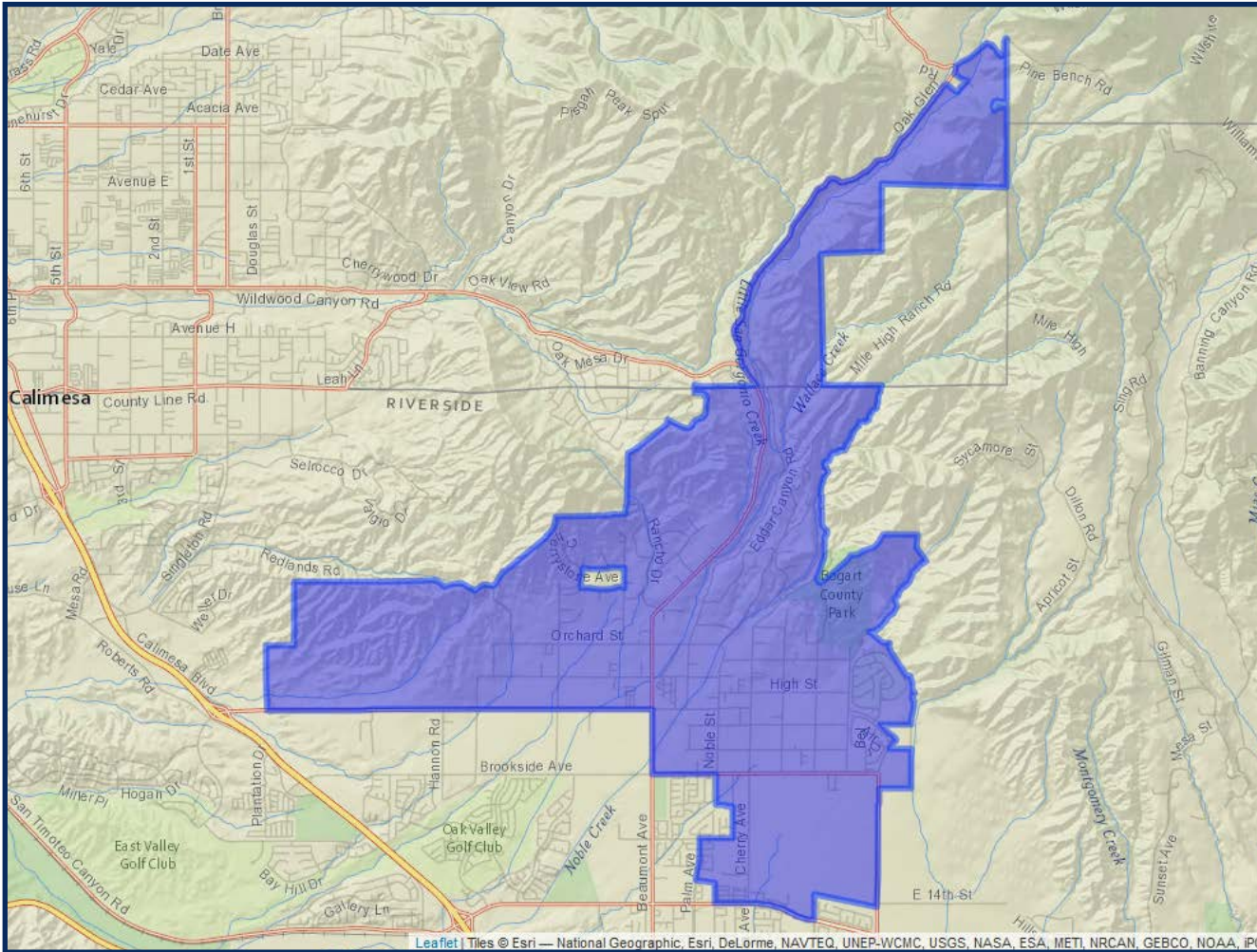
## DIVISION 4



	2020 Count*	2019 CVAP*
Total	11,755	7,543
White	32.71%	33.21%
Black	6.80%	9.53%
Asian	8.30%	9.41%
Hispanic	46.52%	45.72%

# REDISTRICTING BCVWD DRAFT I

## DIVISION 5



	2020 Count*	2019 CVAP*
Total	12,204	7,508
White	48.12%	61.81%
Black	6.15%	7.67%
Asian	6.76%	1.77%
Hispanic	33.99%	25.33%



# REDISTRICTING BCVWD

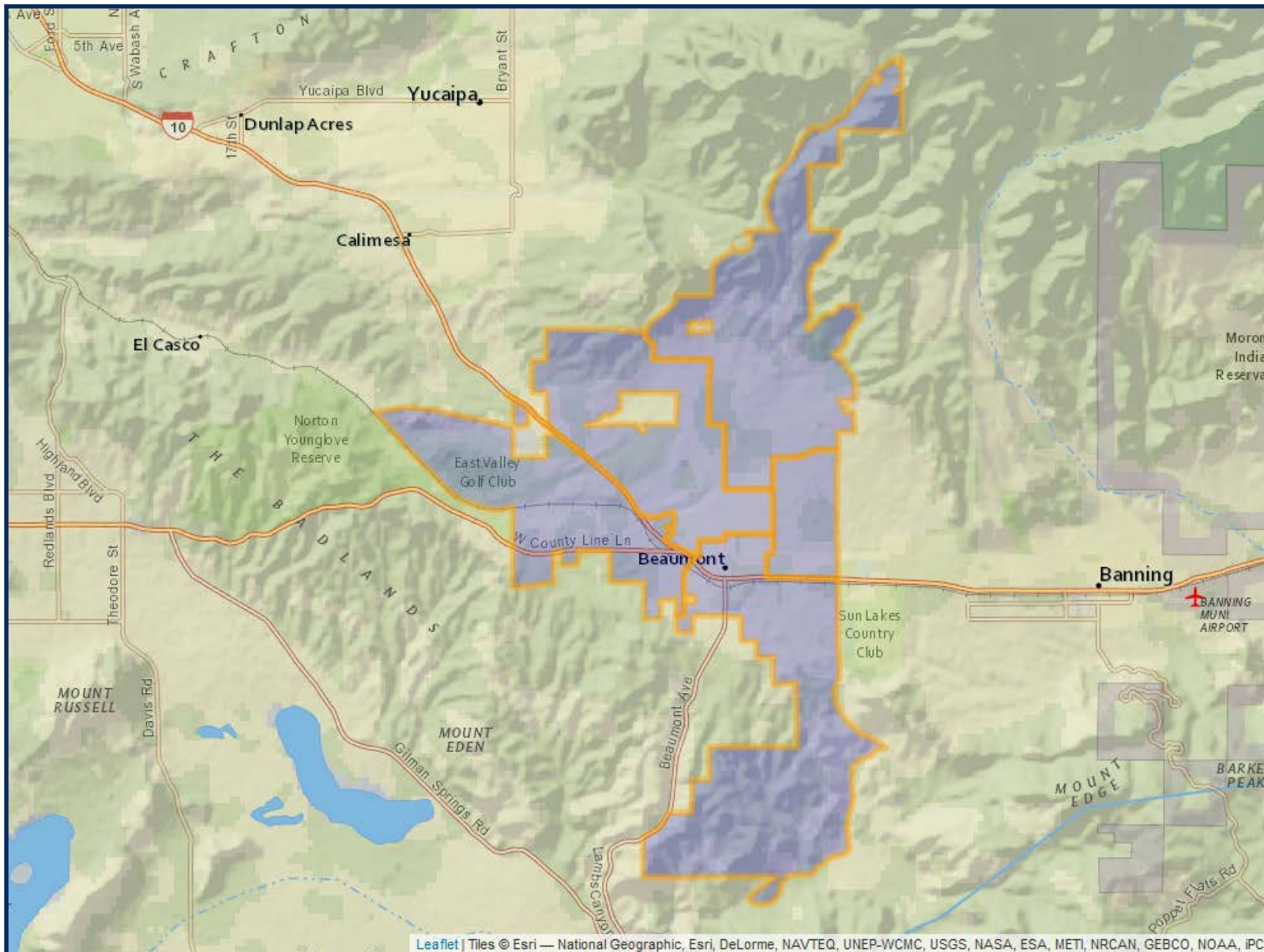
## DRAFT 2

	DIVISION 1	DIVISION 2	DIVISION 3	DIVISION 4	DIVISION 5
2020 Census Count*	11,973	11,979	11,923	12,078	11,886
Deviation #	5	11	-45	110	-82
Deviation %	0.0%	0.1%	-0.4%	0.9%	-0.7%
2010 Census Count	11,461	8,654	6,862	6,537	9,759
2019 CVAP*	8,130	7,776	6,152	6,784	8,000
2010 CVAP	7,669	4,154	2,932	3,454	6,629



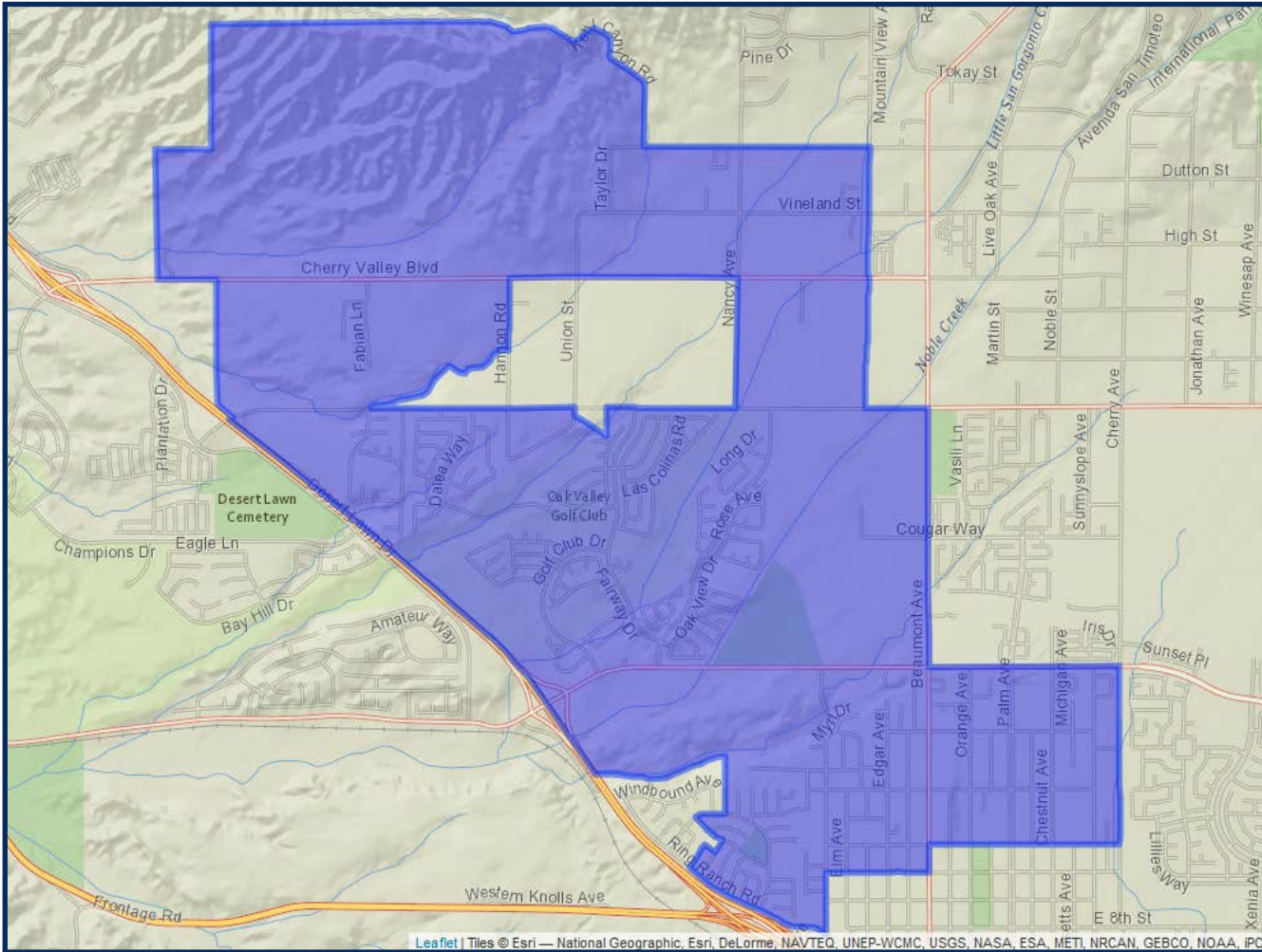
*\*Adjusted for prisoner reallocation*

# EDIVISIONING BCVWD DRAFT 2



# 2 REDISTRICTING BCVWD DRAFT 2

## DIVISION 1



	2020 Count*	2019 CVAP*
Total	11,973	8,130
White	47.19%	51.60%
Black	3.78%	5.56%
Asian	4.84%	3.87%
Hispanic	38.96%	37.95%

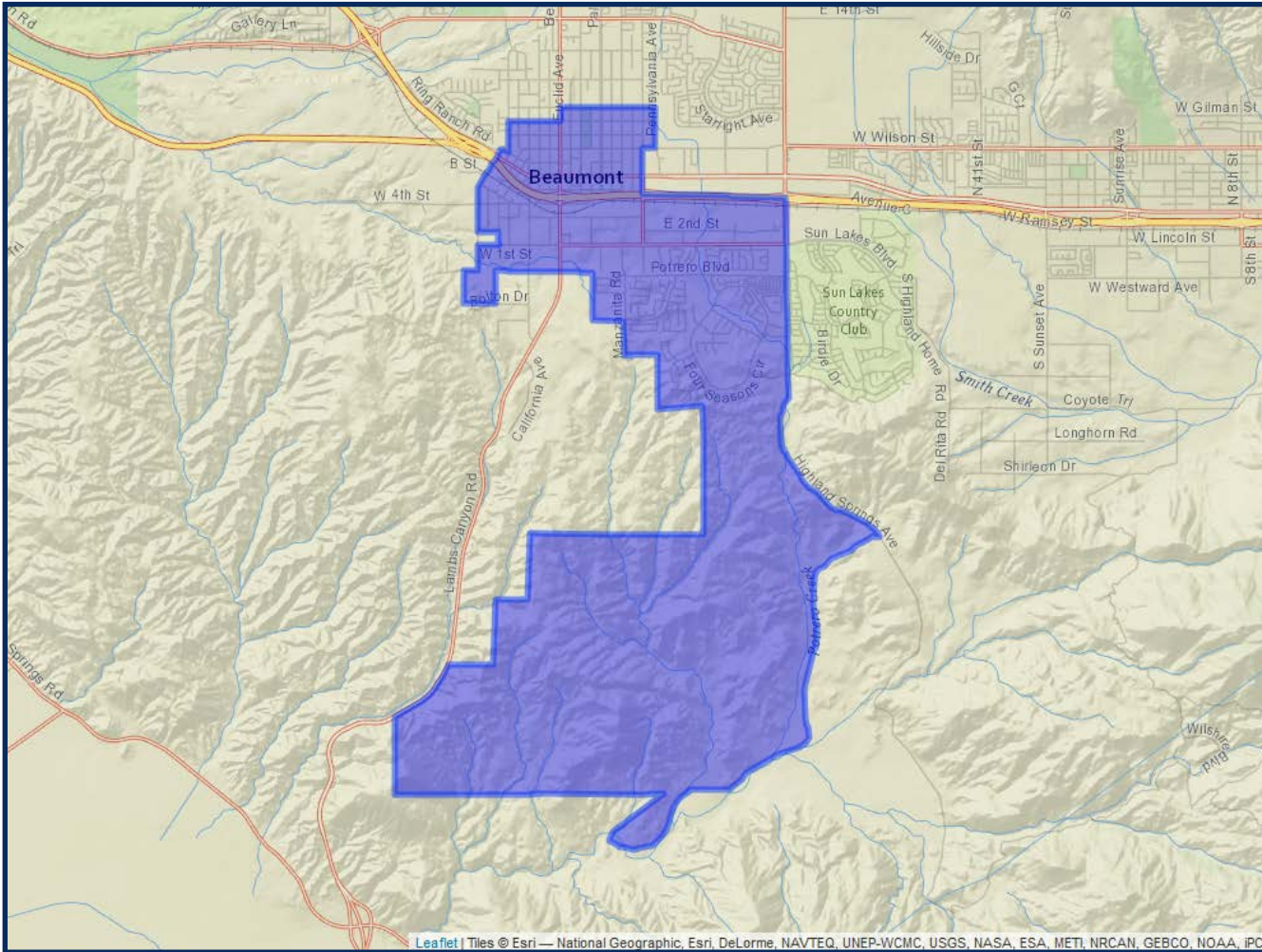


\*Adjusted for prisoner reallocation



# REDISTRICTING BCVWD DRAFT 2

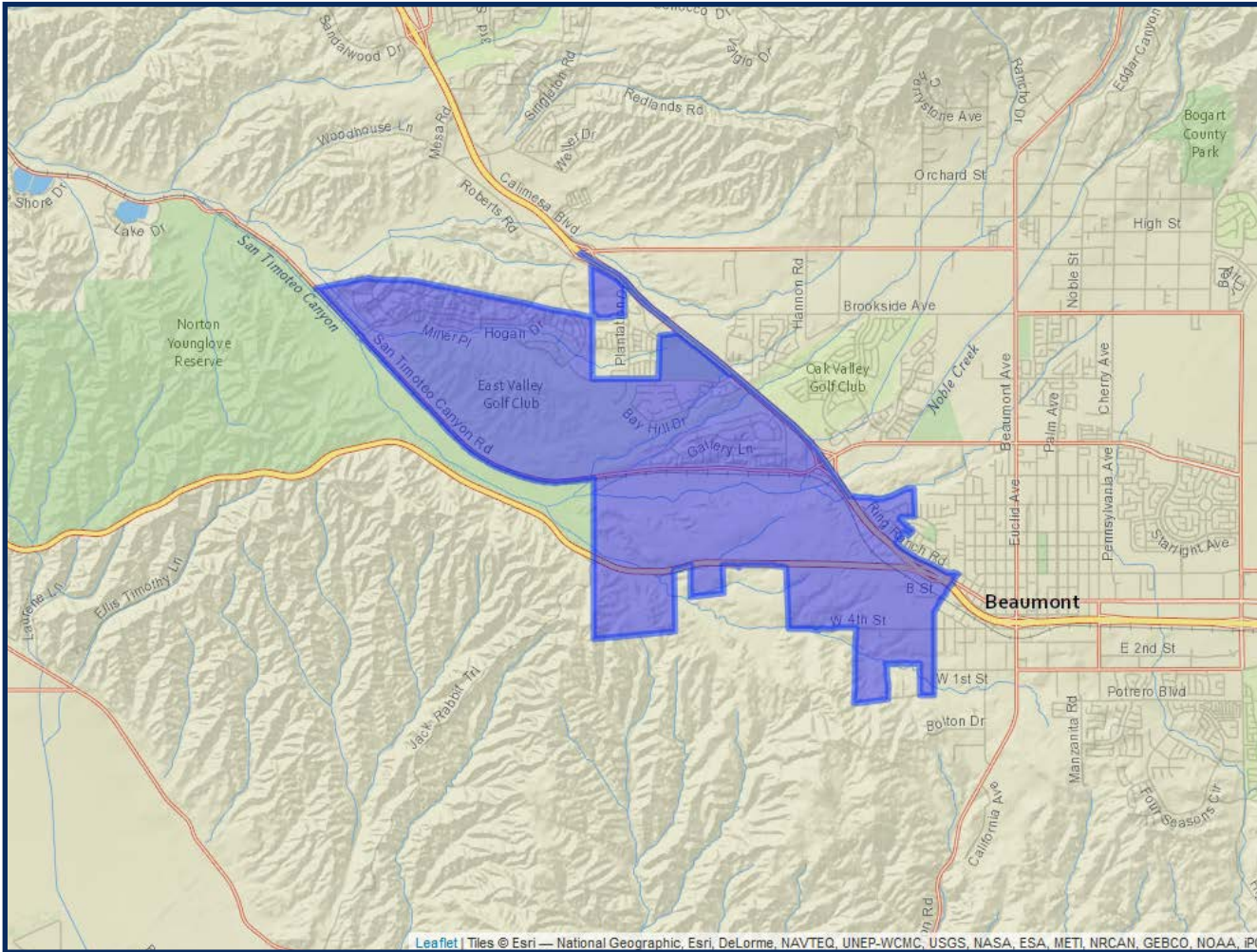
## DIVISION 2



	2020 Count*	2019 CVAP*
Total	11,979	7,776
White	36.56%	46.44%
Black	7.66%	9.63%
Asian	6.64%	6.35%
Hispanic	44.58%	33.95%

# REDISTRICTING BCVWD DRAFT 2

## DIVISION 3

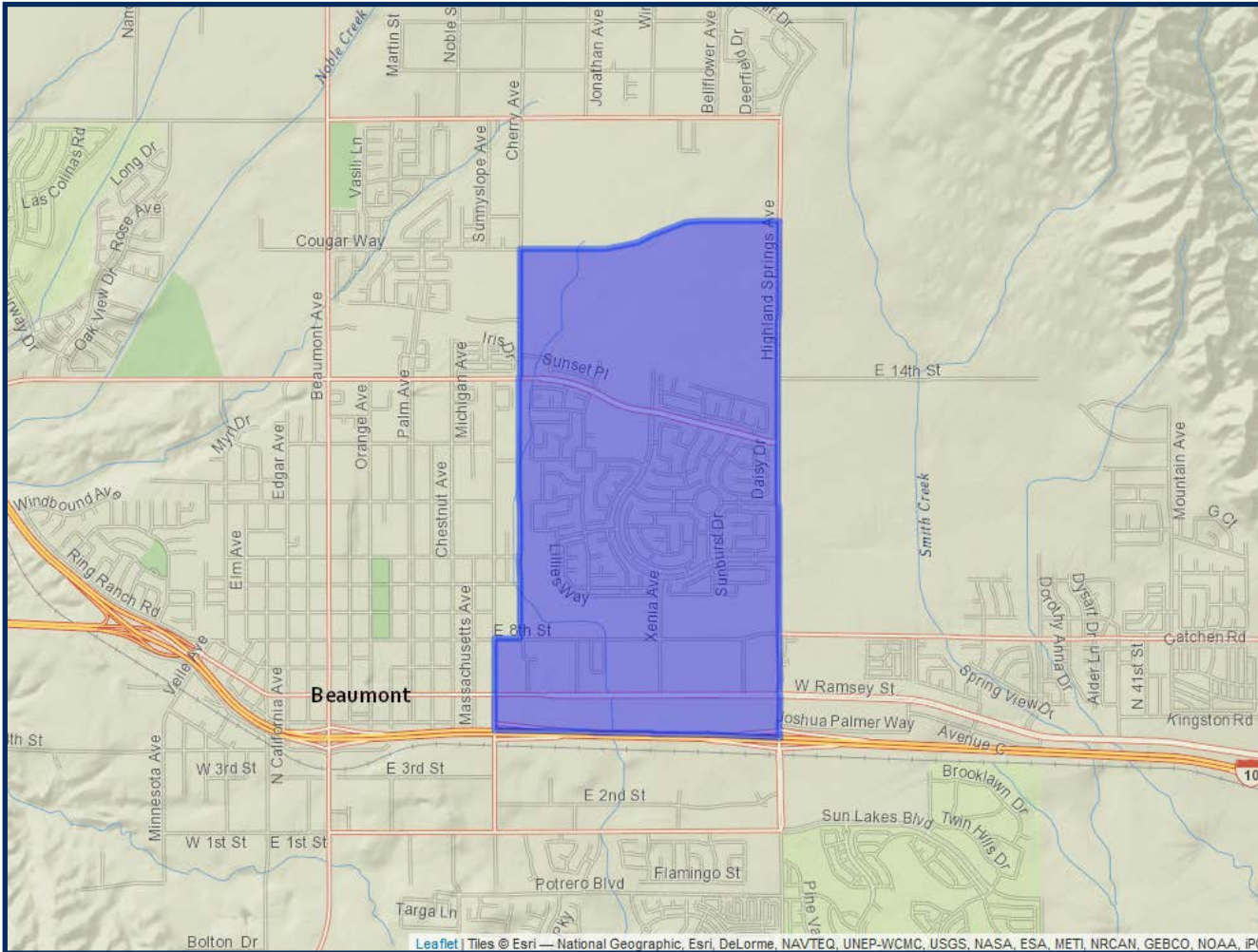


	2020 Count*	2019 CVAP*
Total	11,923	6,152
White	35.10%	37.96%
Black	9.18%	5.79%
Asian	11.32%	12.11%
Hispanic	38.69%	39.56%



# REDISTRICTING BCVWD DRAFT 2

## DIVISION 4

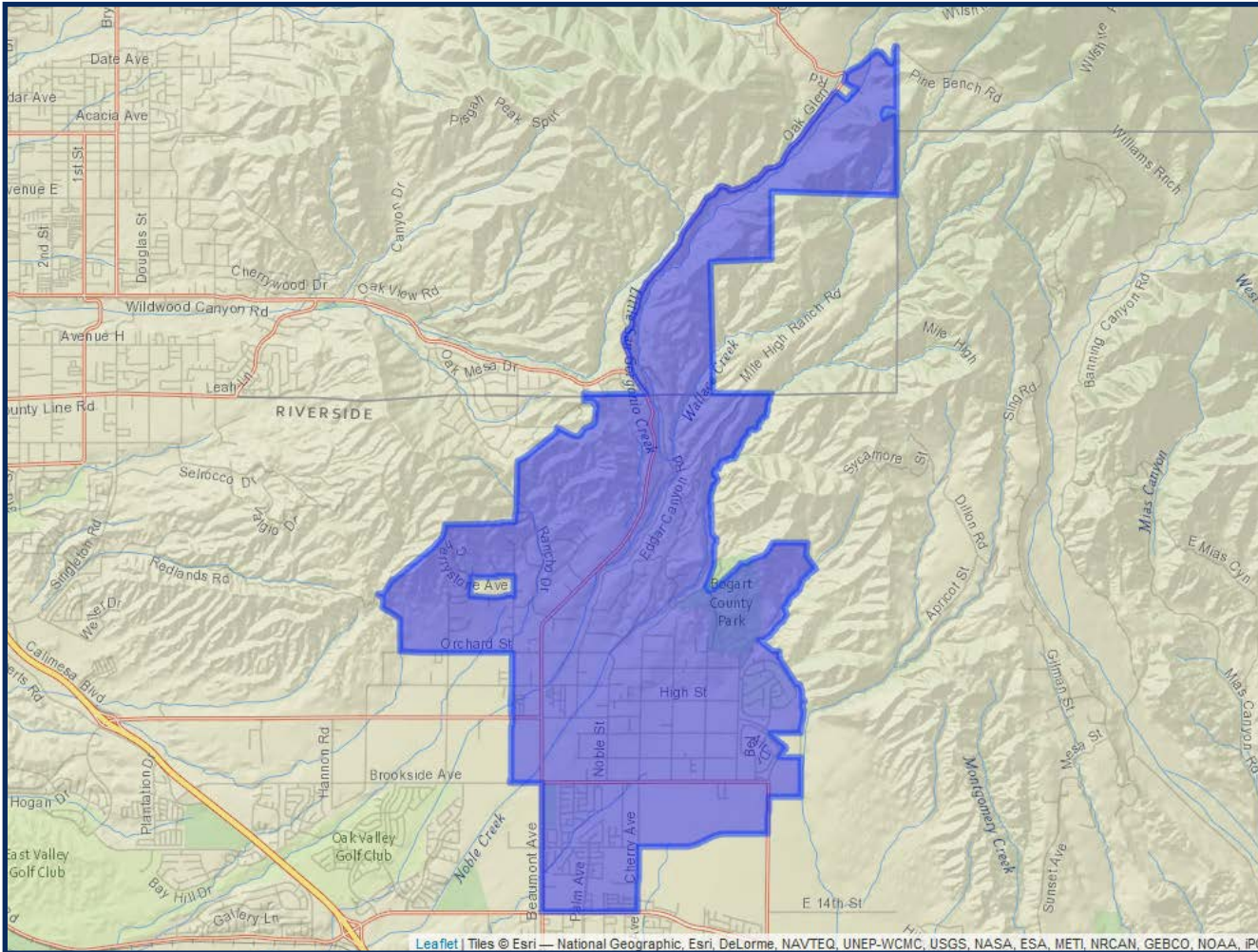


	2020 Count*	2019 CVAP*
Total	12,078	6,784
White	28.58%	26.22%
Black	10.68%	14.52%
Asian	11.63%	11.10%
Hispanic	43.33%	44.49%



# REDISTRICTING BCVWD DRAFT 2

## DIVISION 5



	2020 Count*	2019 CVAP*
Total	11,886	8,000
White	49.65%	59.03%
Black	4.68%	7.73%
Asian	3.99%	3.45%
Hispanic	36.61%	29.68%

# REDISTRICTING BCVWD

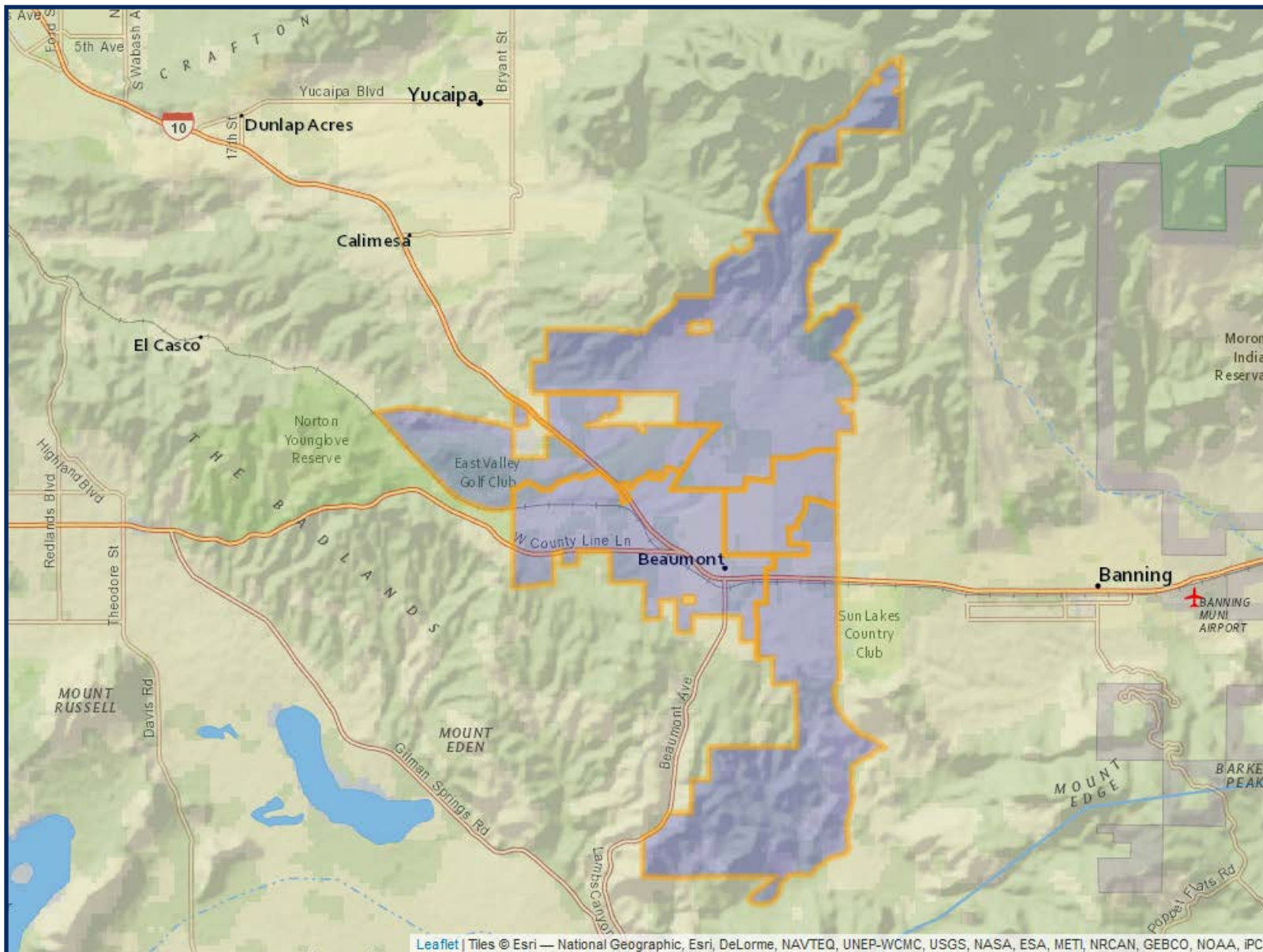
## DRAFT 3

	DIVISION 1	DIVISION 2	DIVISION 3	DIVISION 4	DIVISION 5
2020 Census Count*	12,127	12,042	11,920	11,753	11,997
Deviation #	159	74	-48	-215	29
Deviation %	1.3%	0.6%	-0.4%	-1.8%	0.2%
2010 Census Count	9,323	8,070	9,203	6,549	10,128
2019 CVAP*	6,616	8,138	6,998	6,705	8,385
2010 CVAP	5,273	3,901	5,242	3,539	6,883



\*Adjusted for prisoner reallocation

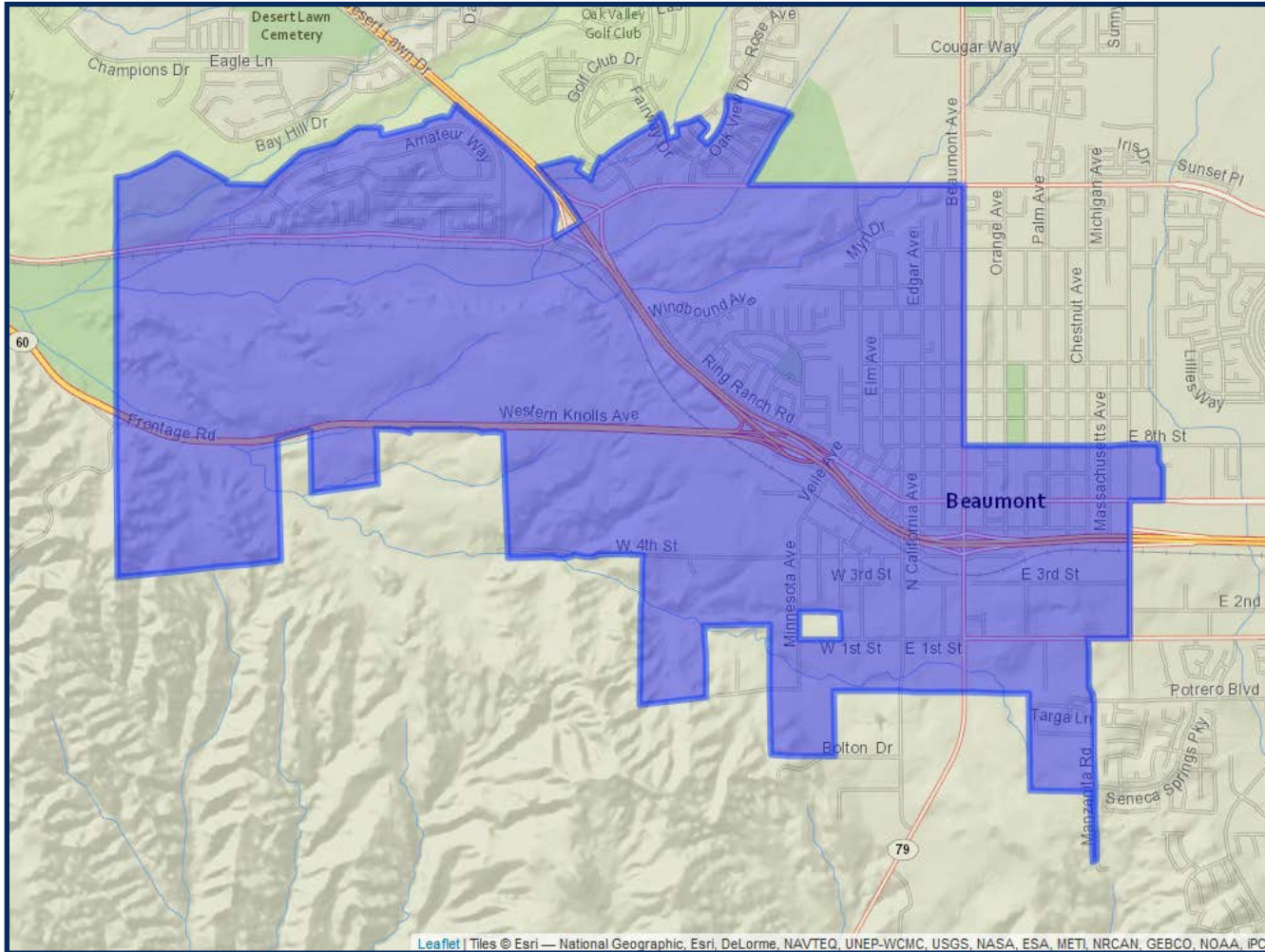
# EDIVISIONING BCVWD DRAFT 3





# 2 REDISTRICTING BCVWD DRAFT 3

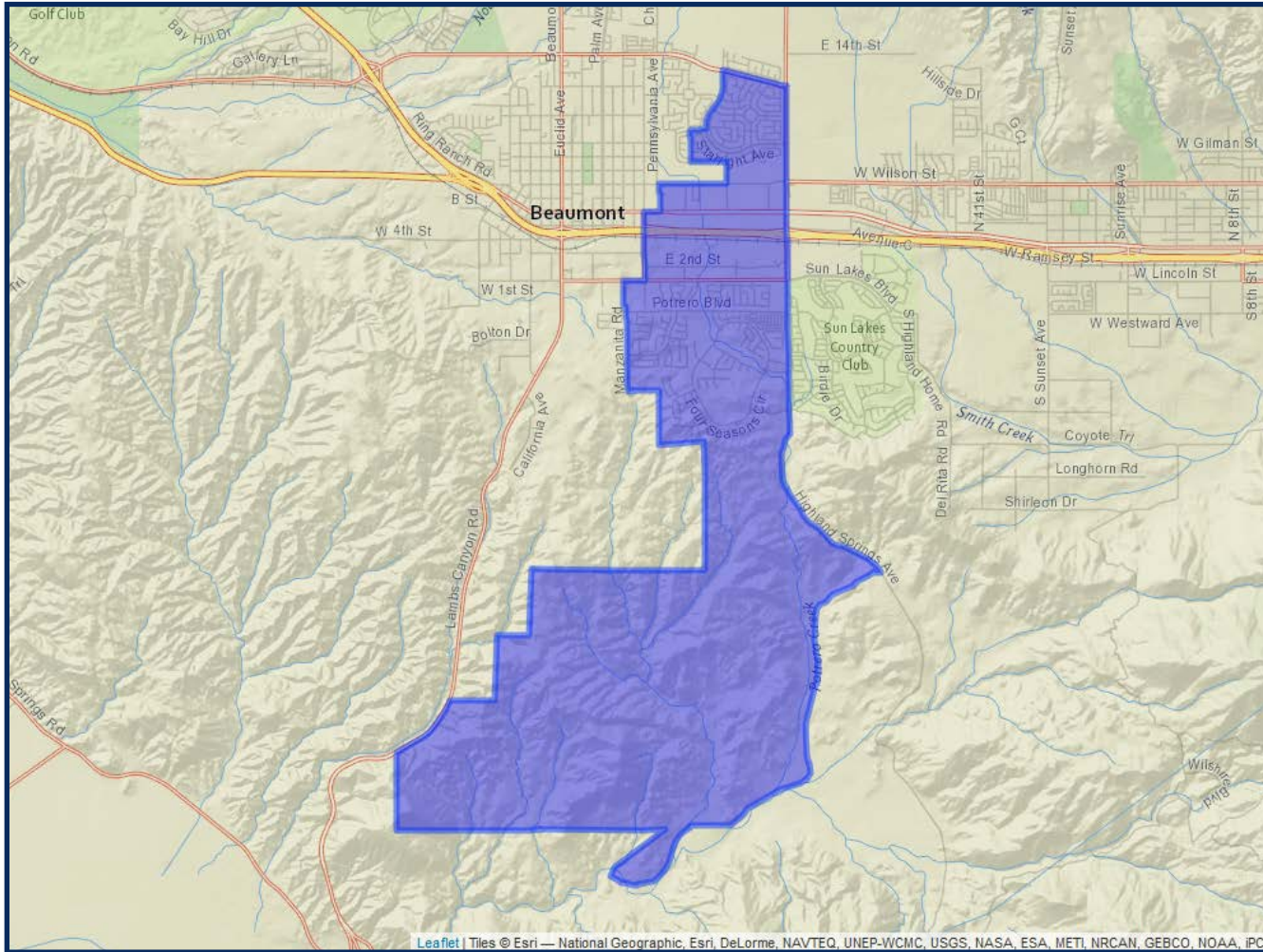
## DIVISION 1



	2020 Count*	2019 CVAP*
Total	12,127	6,616
White	33.61%	38.42%
Black	6.08%	5.40%
Asian	6.70%	6.24%
Hispanic	48.44%	47.42%

# REDISTRICTING BCVWD DRAFT 3

## DIVISION 2



	2020 Count*	2019 CVAP*
Total	12,042	8,138
White	39.82%	41.68%
Black	9.51%	12.28%
Asian	8.44%	11.27%
Hispanic	37.17%	32.08%

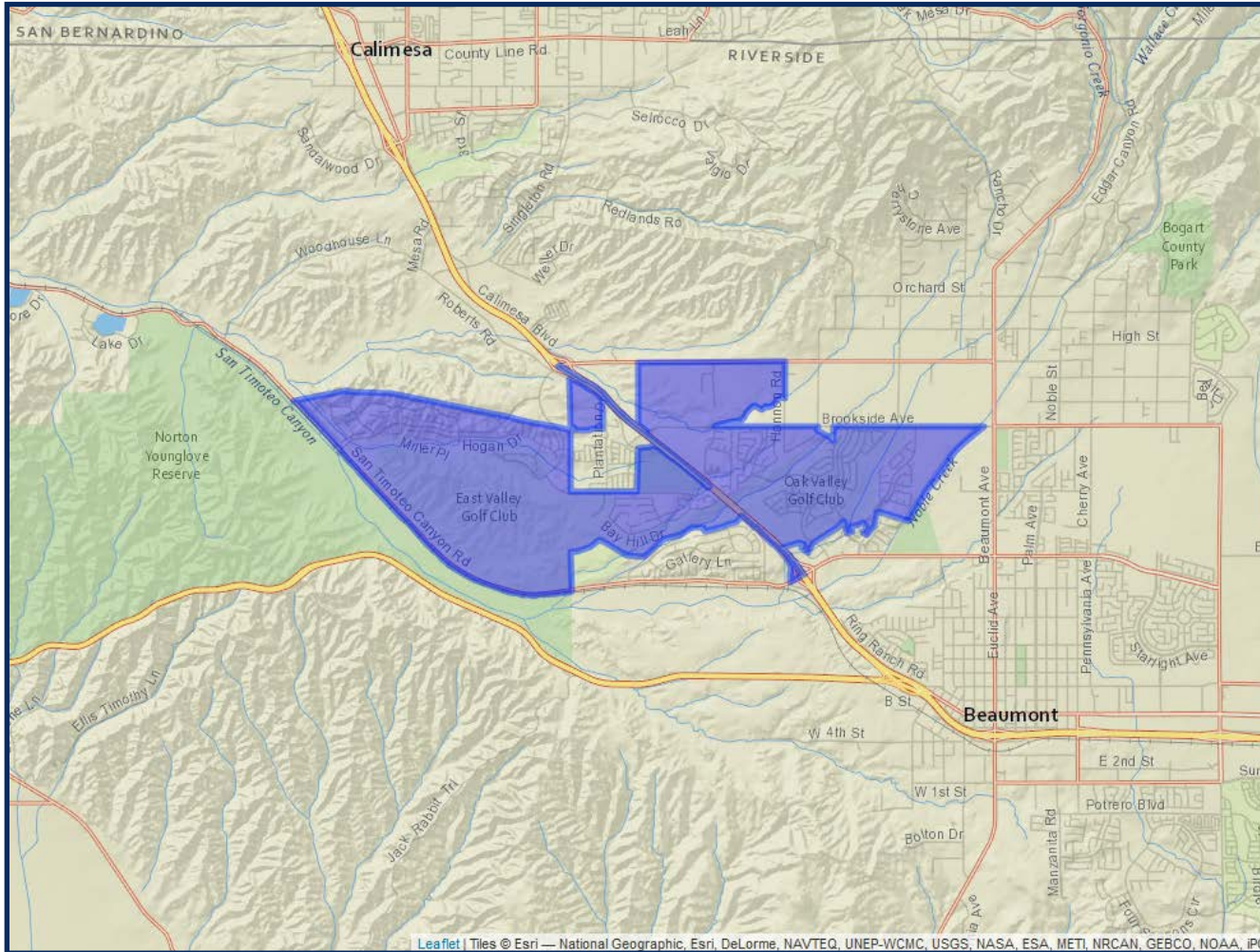


\*Adjusted for prisoner reallocation



# REDISTRICTING BCVWD DRAFT 3

## DIVISION 3

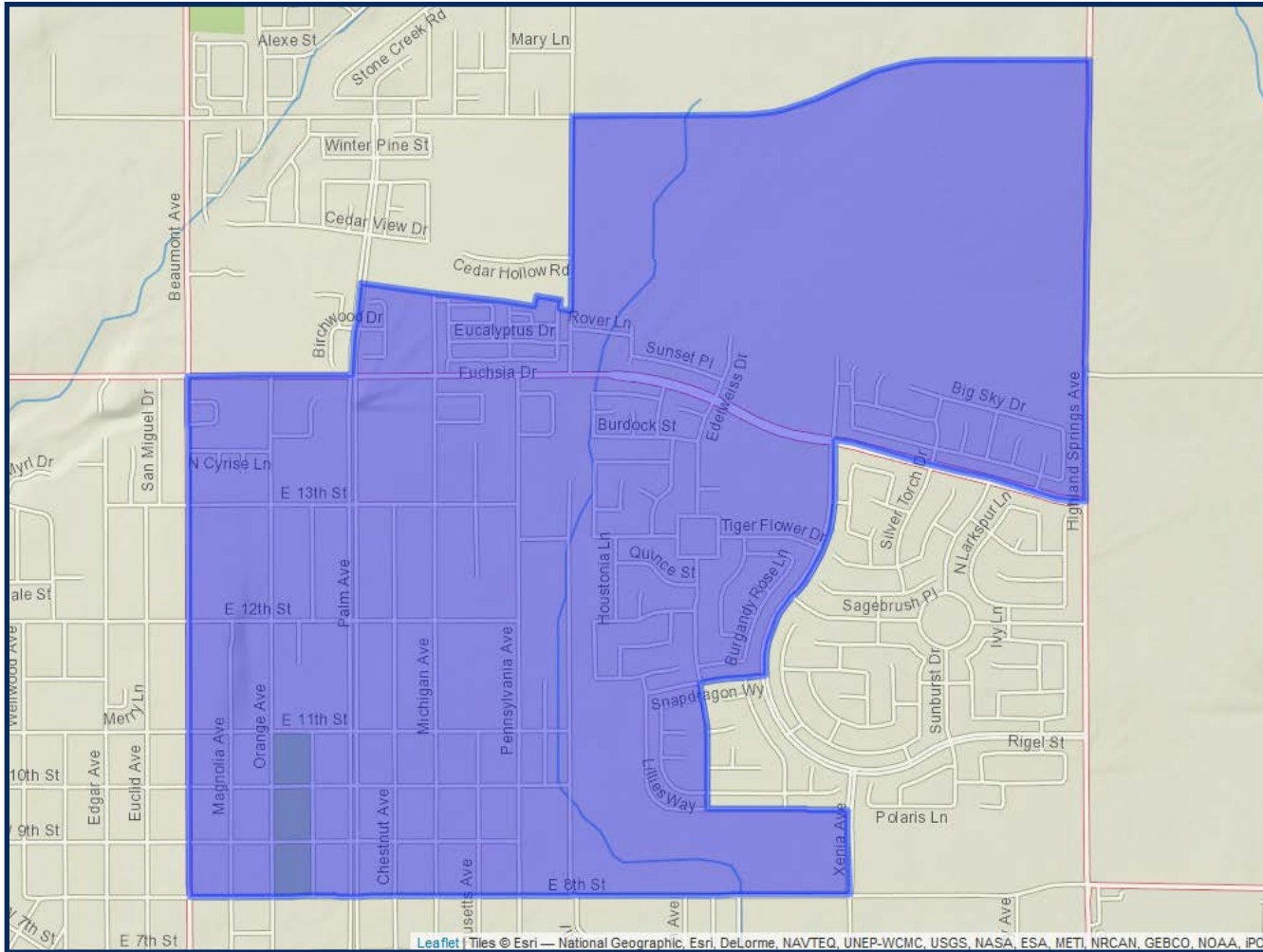


	2020 Count*	2019 CVAP*
Total	11,920	6,998
White	42.67%	46.43%
Black	8.27%	7.03%
Asian	9.97%	9.75%
Hispanic	33.23%	33.61%



# REDISTRICTING BCVWD DRAFT 3

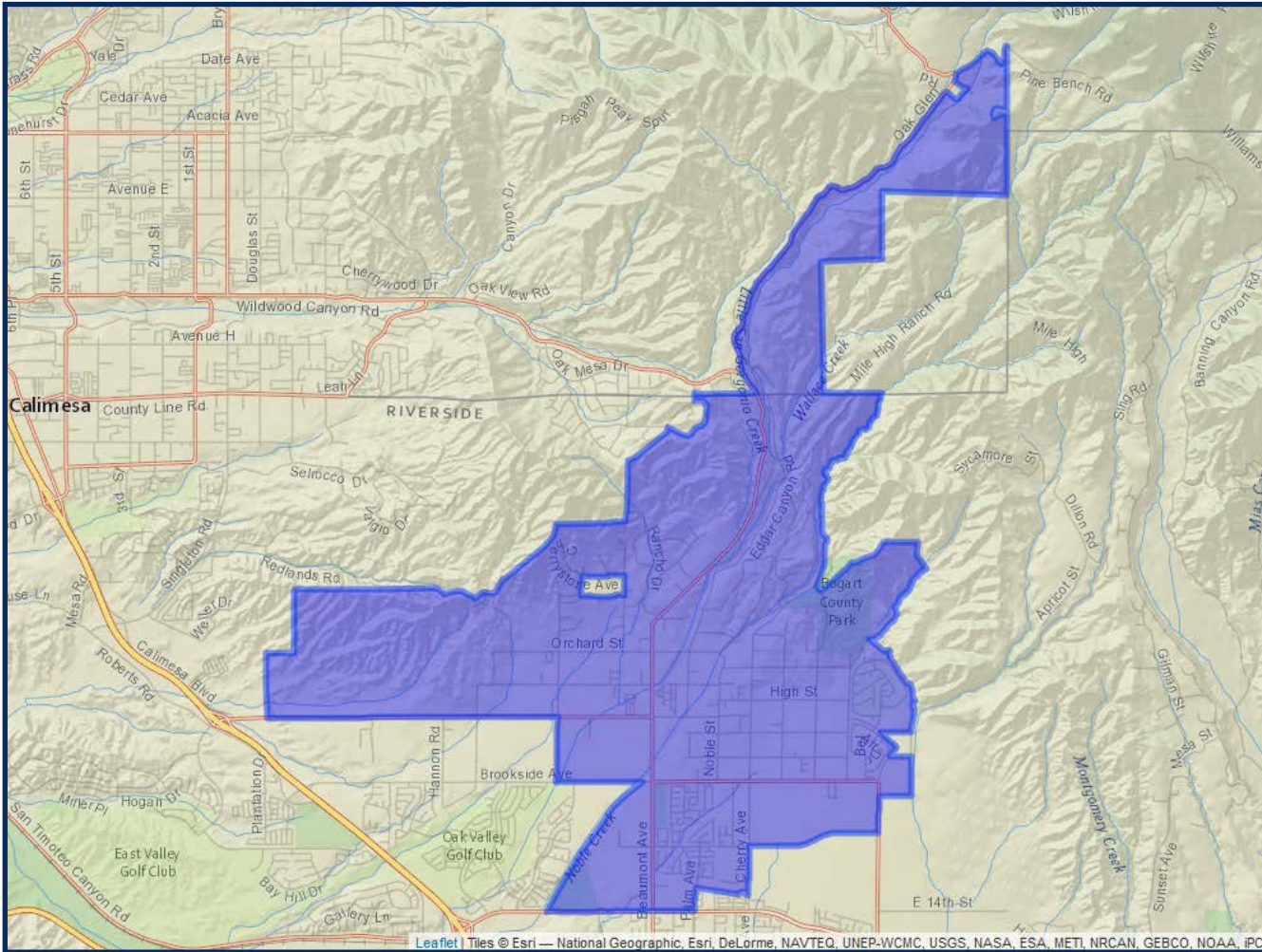
## DIVISION 4



	2020 Count*	2019 CVAP*
Total	11,753	6,705
White	28.81%	35.78%
Black	7.63%	9.95%
Asian	9.46%	4.91%
Hispanic	49.18%	45.53%

# REDISTRICTING BCVWD DRAFT 3

## DIVISION 5



	2020 Count*	2019 CVAP*
Total	11,997	8,385
White	51.88%	60.35%
Black	4.55%	7.69%
Asian	3.94%	2.89%
Hispanic	34.28%	28.60%

# REDISTRICTING BCVWD

## DRAFT 4

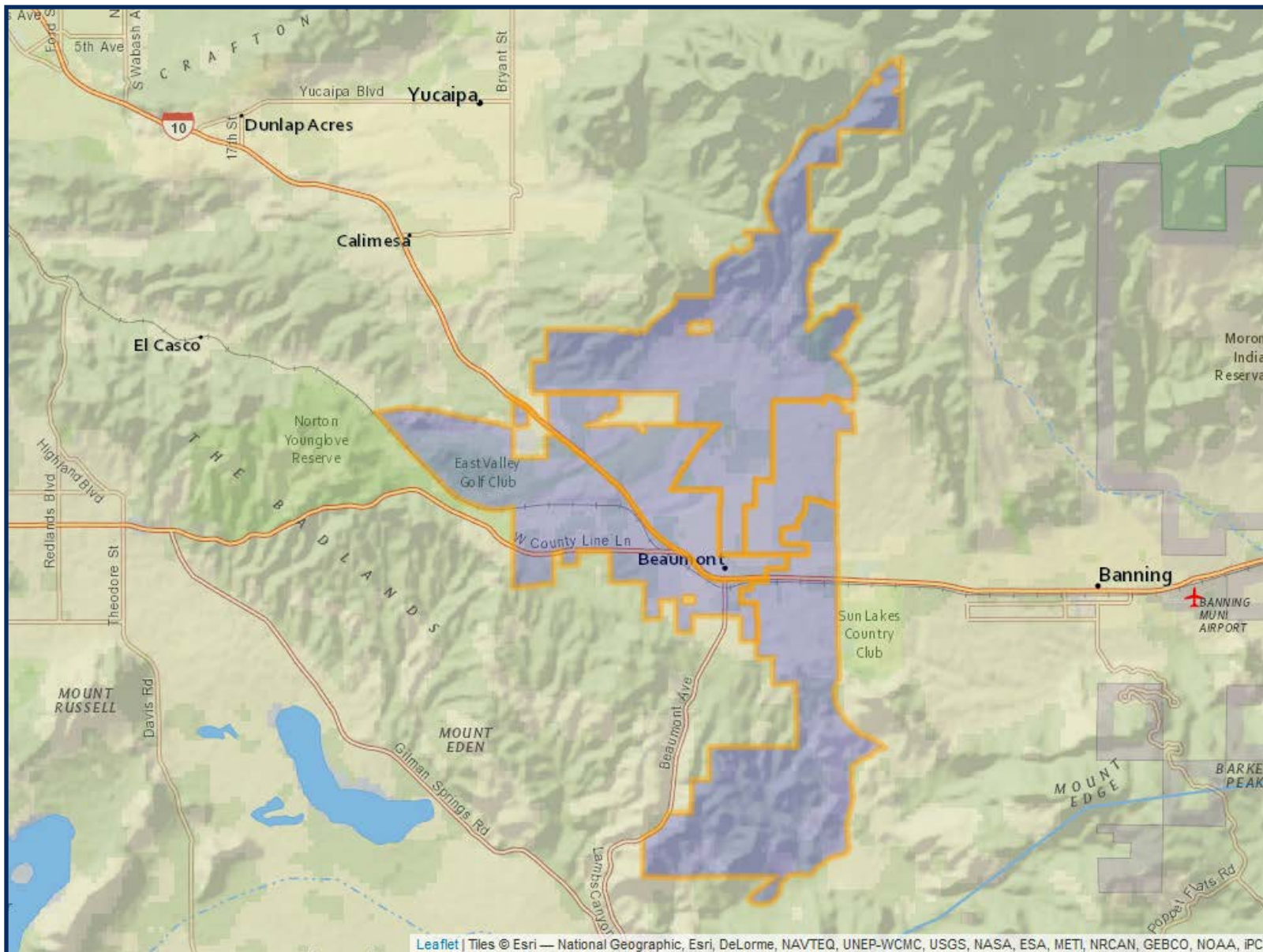
	DIVISION 1	DIVISION 2	DIVISION 3	DIVISION 4	DIVISION 5
2020 Census Count*	11,812	12,089	11,999	12,210	11,729
Deviation #	-156	121	31	242	-239
Deviation %	-1.3%	1.0%	0.3%	2.0%	-2.0%
2010 Census Count	11,282	8,001	6,957	5,759	11,274
2019 CVAP*	7,154	8,162	6,322	6,614	8,590
2010 CVAP	7,356	3,862	2,941	3,207	7,472



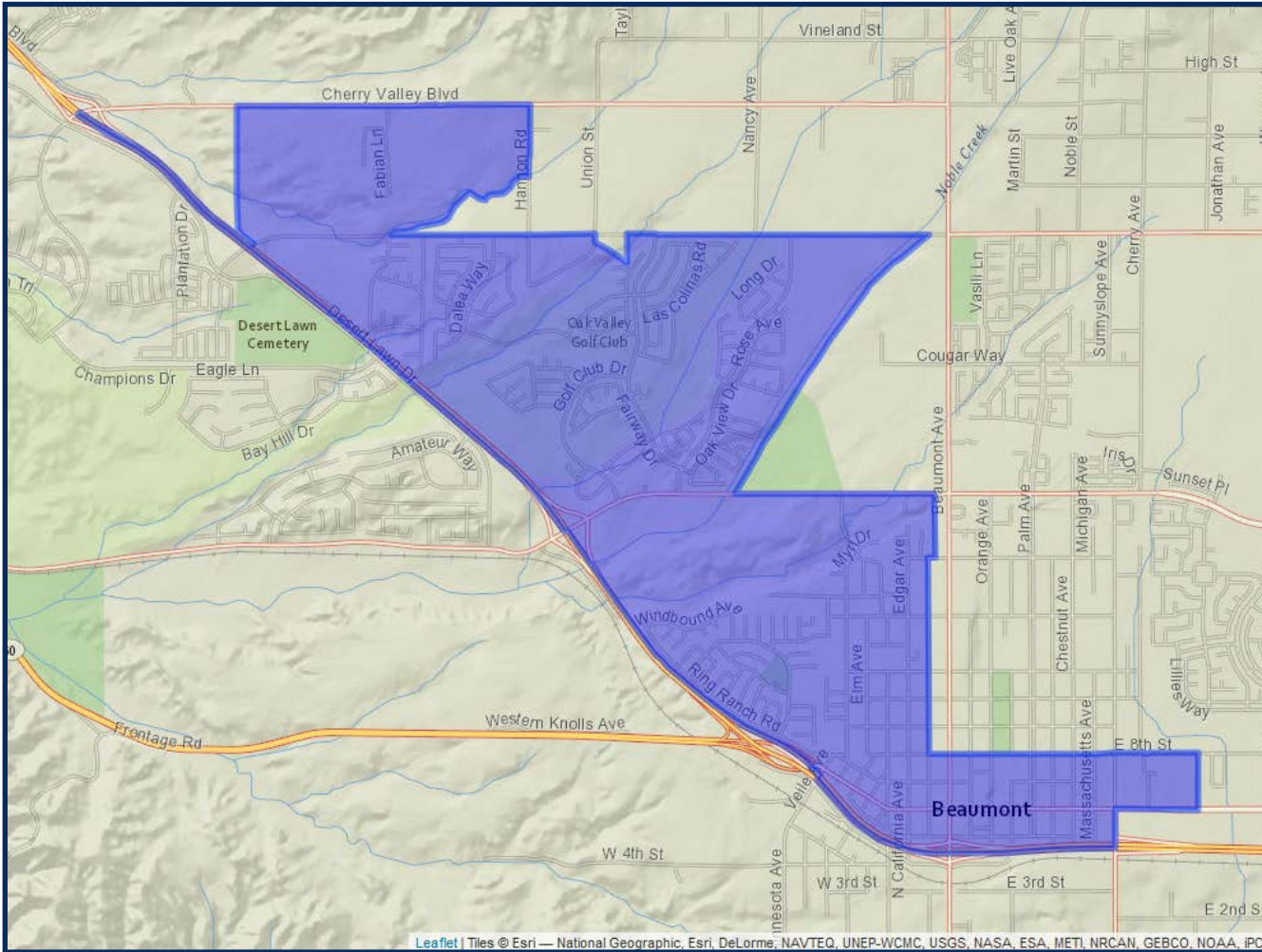
*\*Adjusted for prisoner reallocation*



# EDIVISIONING BCVWD DRAFT 4



## DIVISION 1

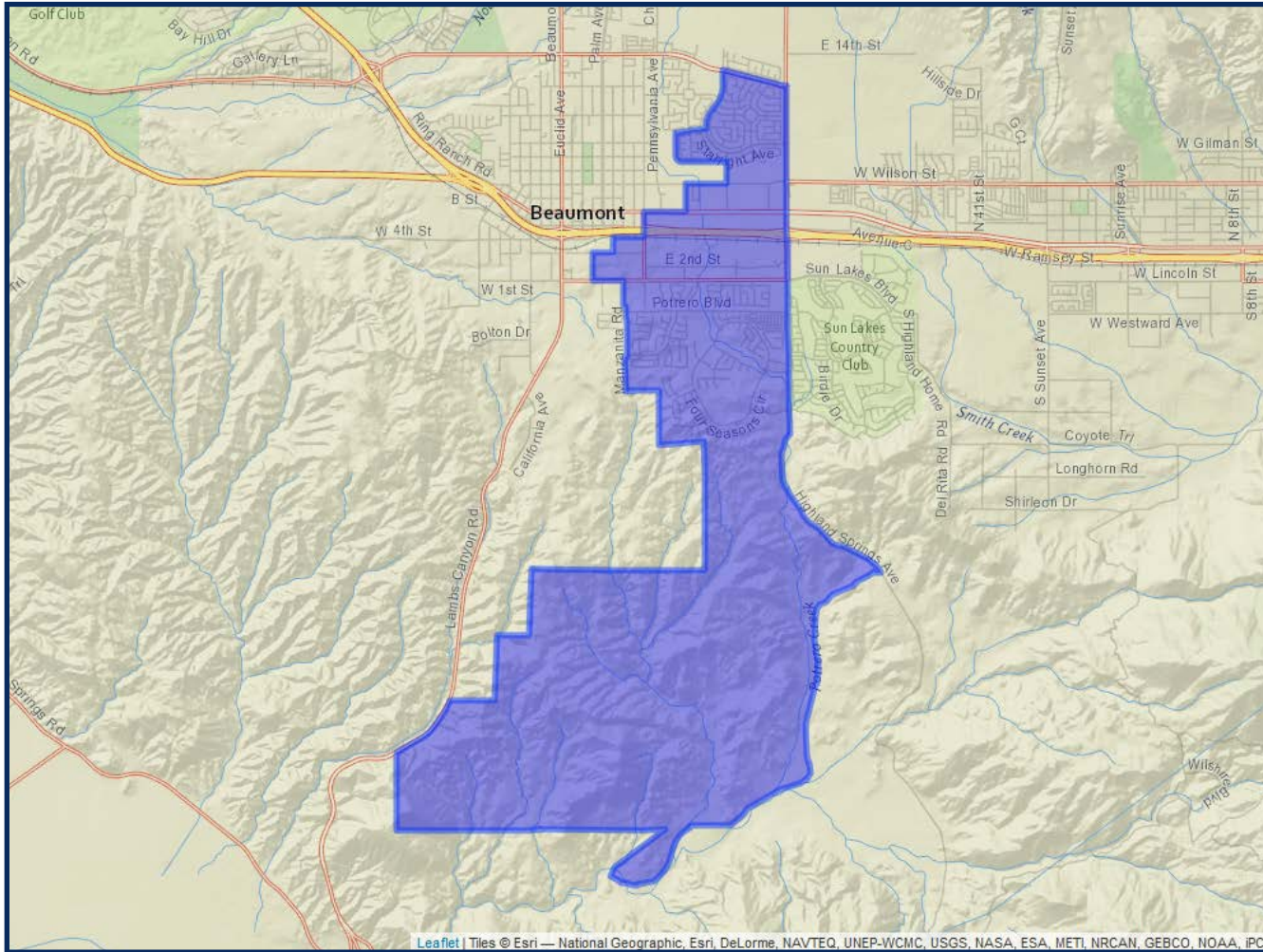


	2020 Count*	2019 CVAP*
Total	11,812	7,154
White	42.30%	47.48%
Black	5.07%	6.56%
Asian	5.21%	4.65%
Hispanic	42.12%	40.45%



# REDISTRICTING BCVWD DRAFT 4

## DIVISION 2



	2020 Count*	2019 CVAP*
Total	12,089	8,162
White	40.05%	41.88%
Black	9.59%	12.28%
Asian	8.54%	11.31%
Hispanic	36.70%	31.77%

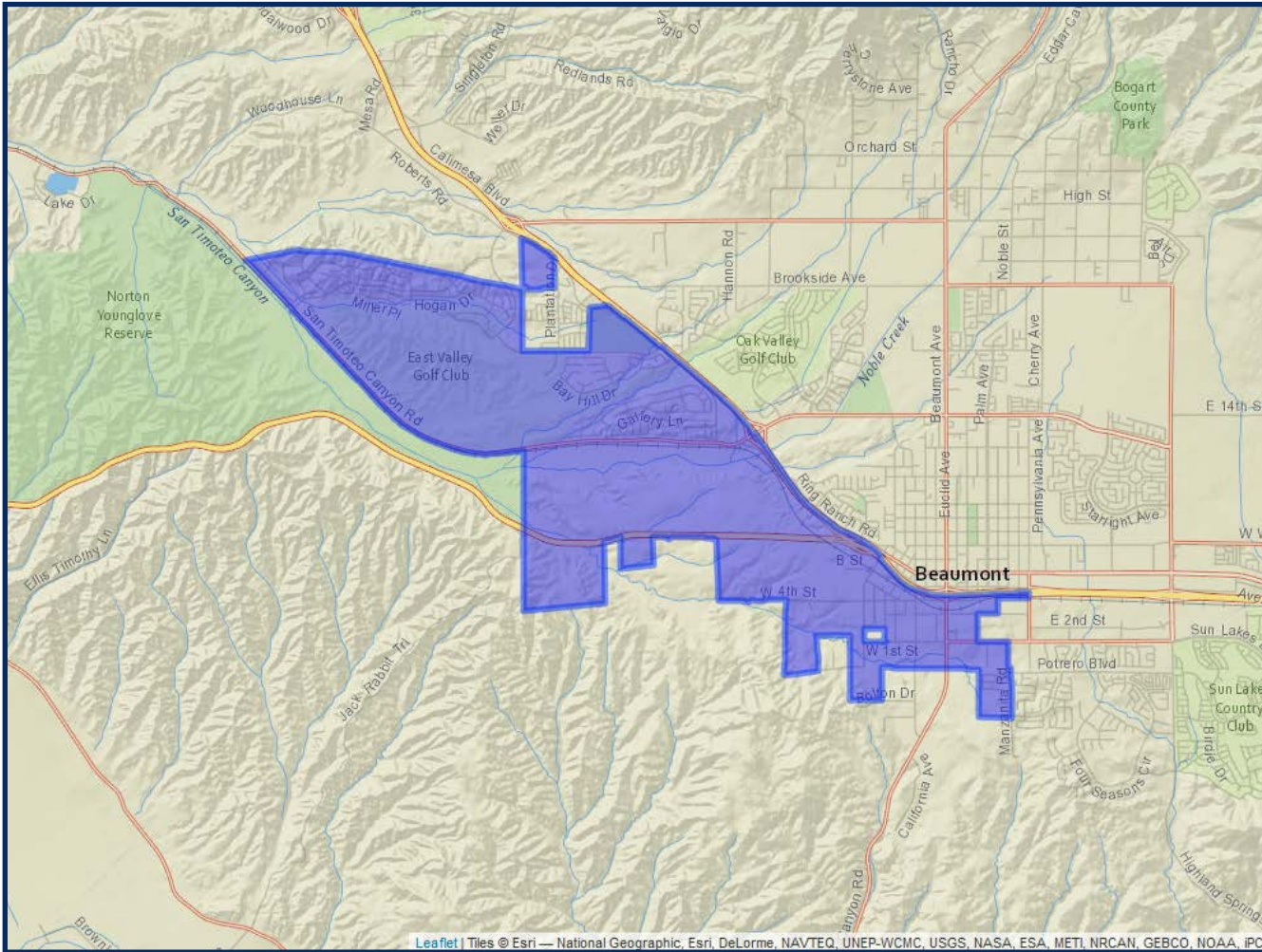


\*Adjusted for prisoner reallocation



# REDISTRICTING BCVWD DRAFT 4

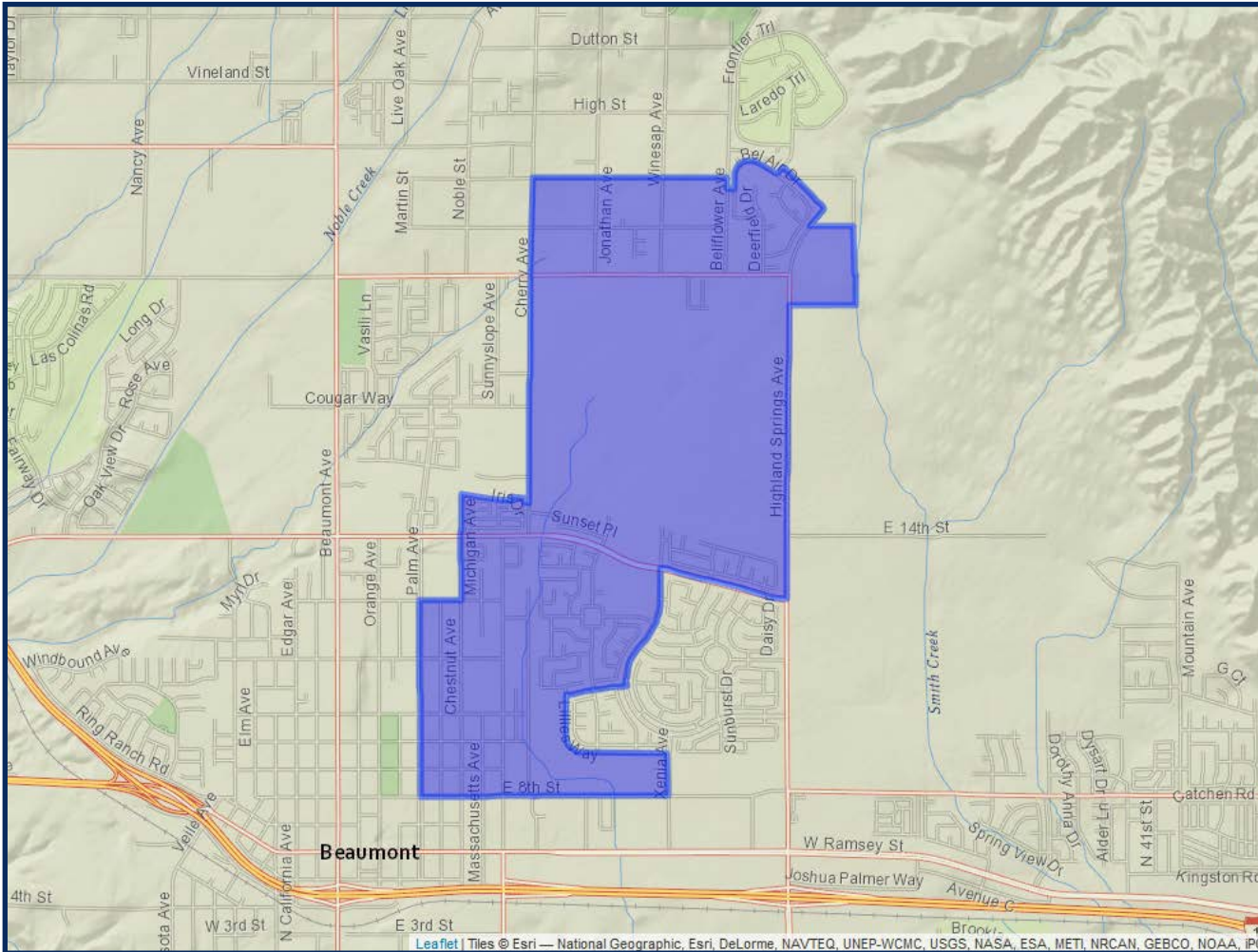
## DIVISION 3



	2020 Count*	2019 CVAP*
Total	11,999	6,322
White	33.94%	36.78%
Black	9.33%	6.04%
Asian	11.43%	11.91%
Hispanic	39.54%	40.11%

# REDISTRICTING BCVWD DRAFT 4

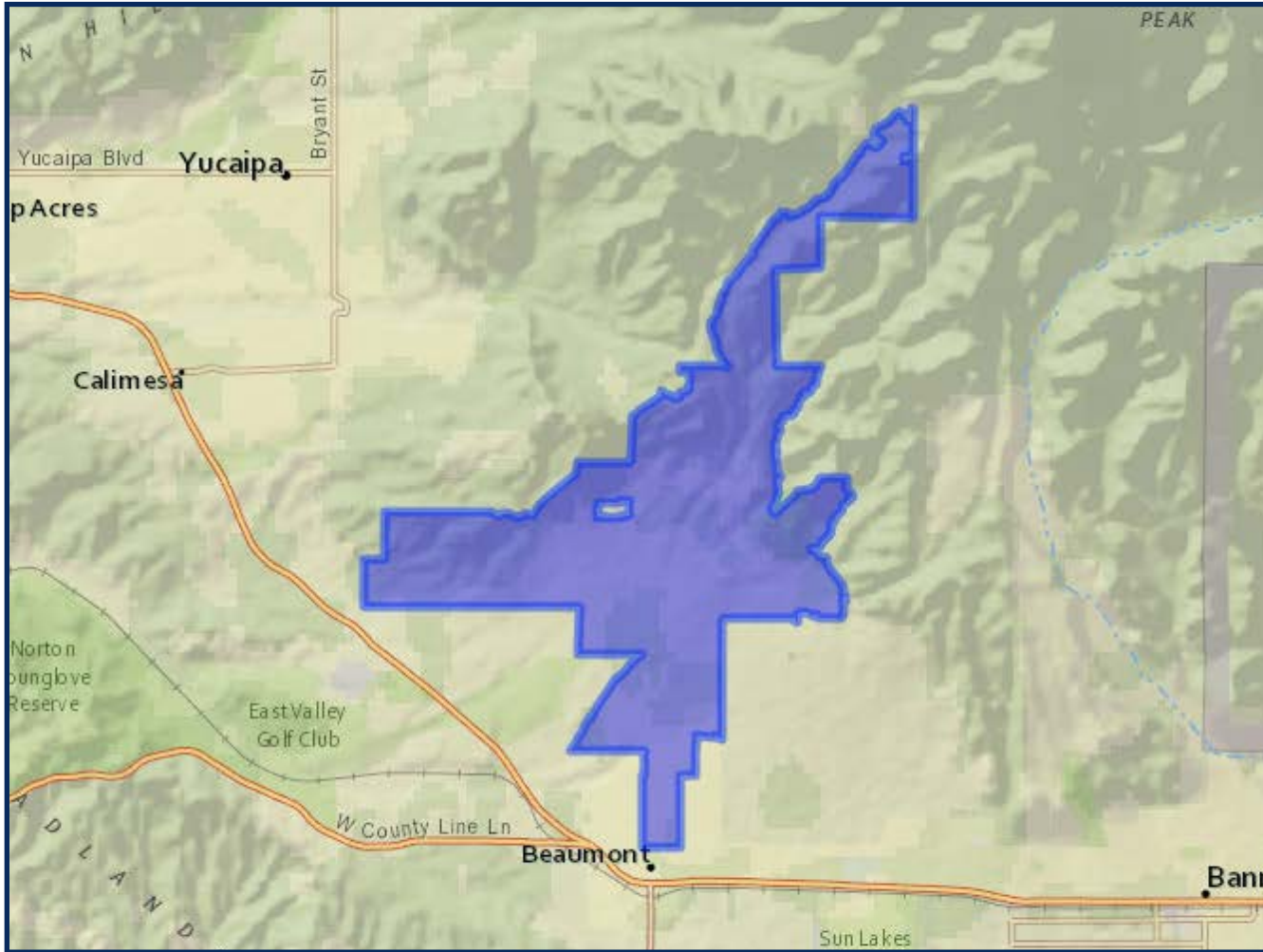
## DIVISION 4



	2020 Count*	2019 CVAP*
Total	12,210	6,614
White	29.80%	38.60%
Black	8.64%	11.40%
Asian	10.17%	4.29%
Hispanic	46.49%	42.05%



## DIVISION 5



	2020 Count*	2019 CVAP*
Total	11,729	8,590
White	51.31%	57.61%
Black	3.22%	6.44%
Asian	2.92%	3.38%
Hispanic	37.25%	31.98%



# REDISTRICTING BCVWD

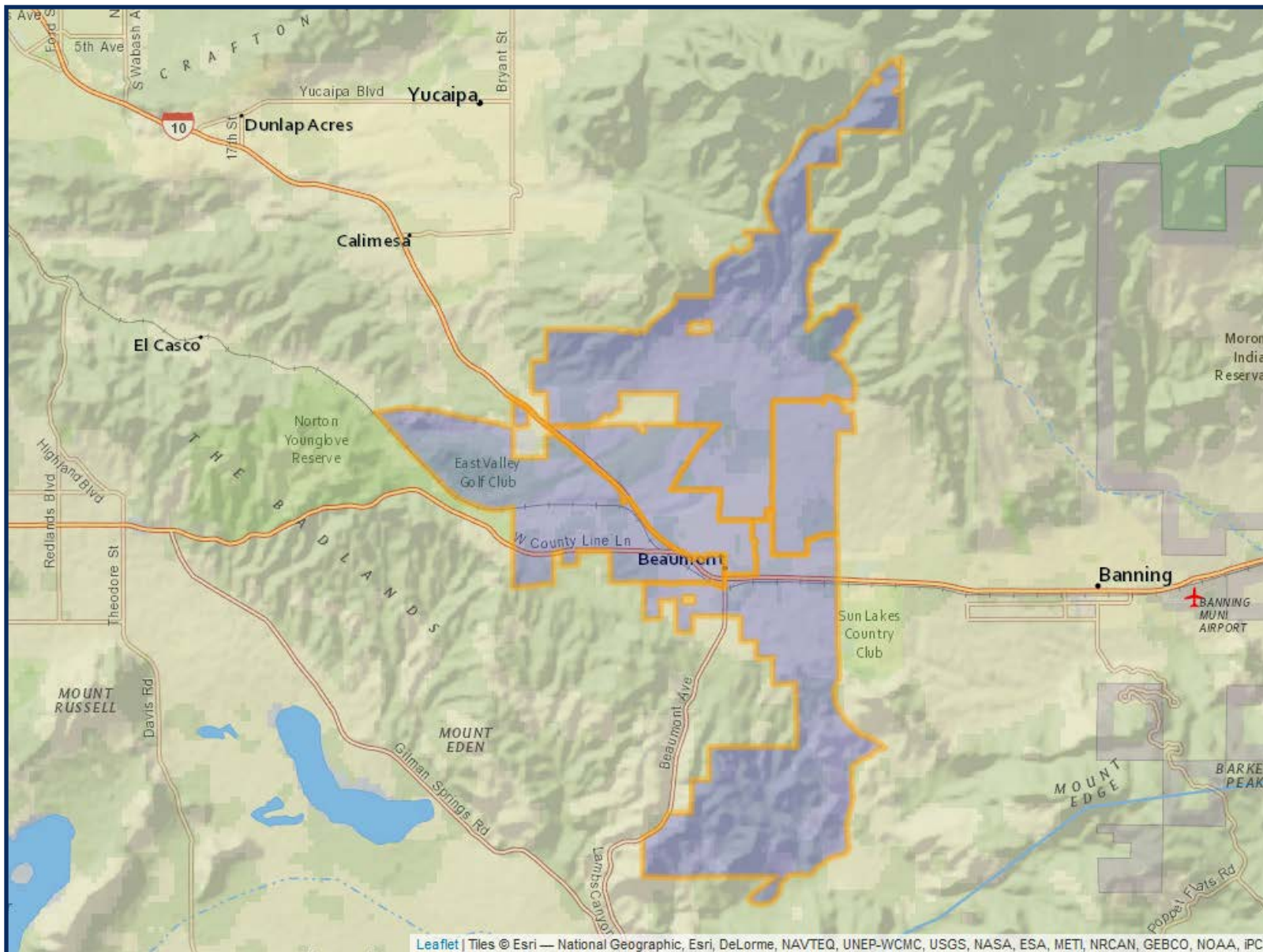
## DRAFT 5

	DIVISION 1	DIVISION 2	DIVISION 3	DIVISION 4	DIVISION 5
2020 Census Count*	11,813	11,856	11,944	12,216	12,010
Deviation #	-155	-112	-24	248	42
Deviation %	-1.3%	-0.9%	-0.2%	2.1%	0.4%
2010 Census Count	11,195	8,110	6,984	5,355	11,629
2019 CVAP*	7,272	7,980	6,183	6,434	8,973
2010 CVAP	7,481	3,739	2,995	3,167	7,456

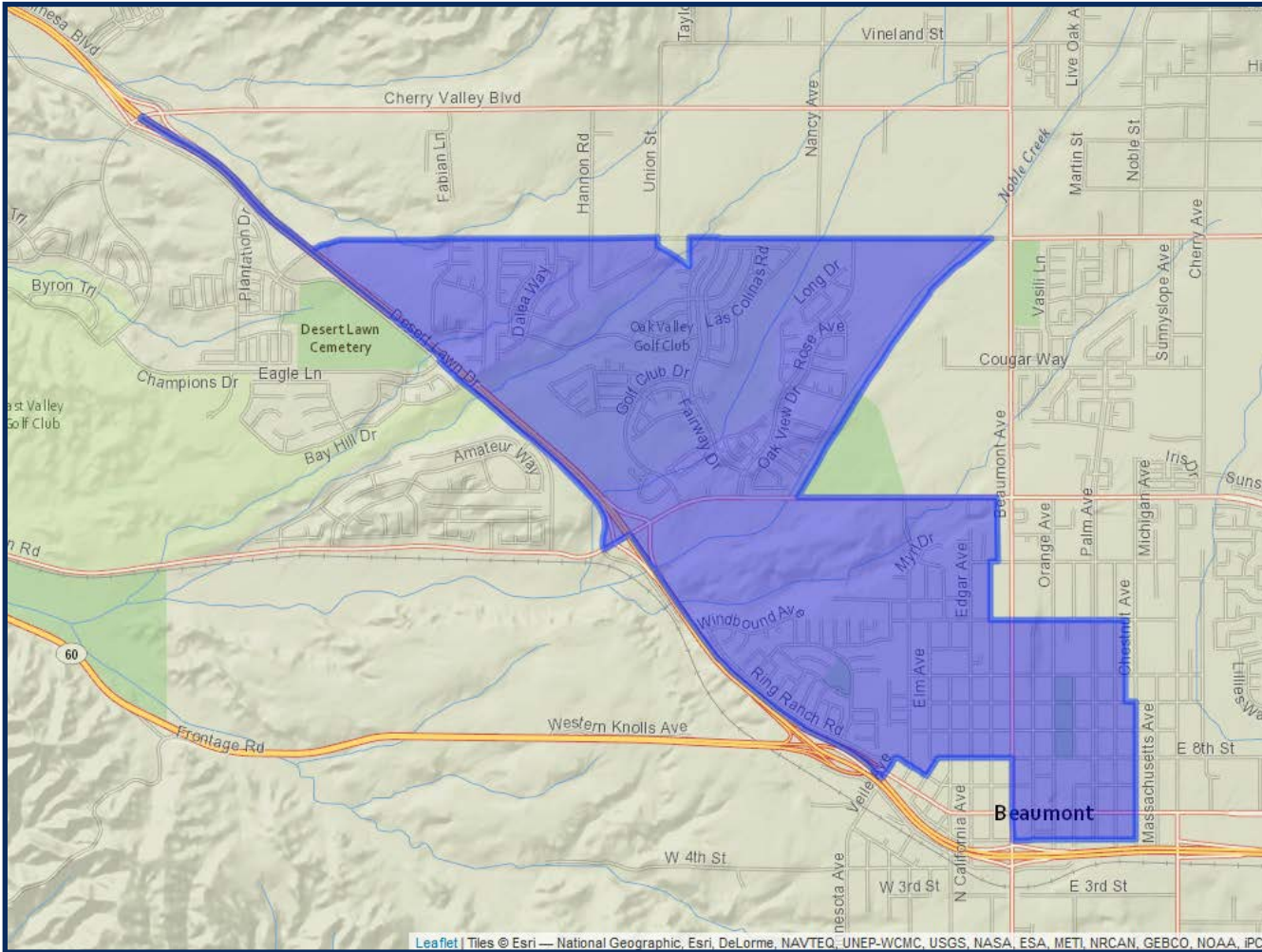


*\*Adjusted for prisoner reallocation*

# EDIVISIONING BCVWD DRAFT 5



# DIVISION 1



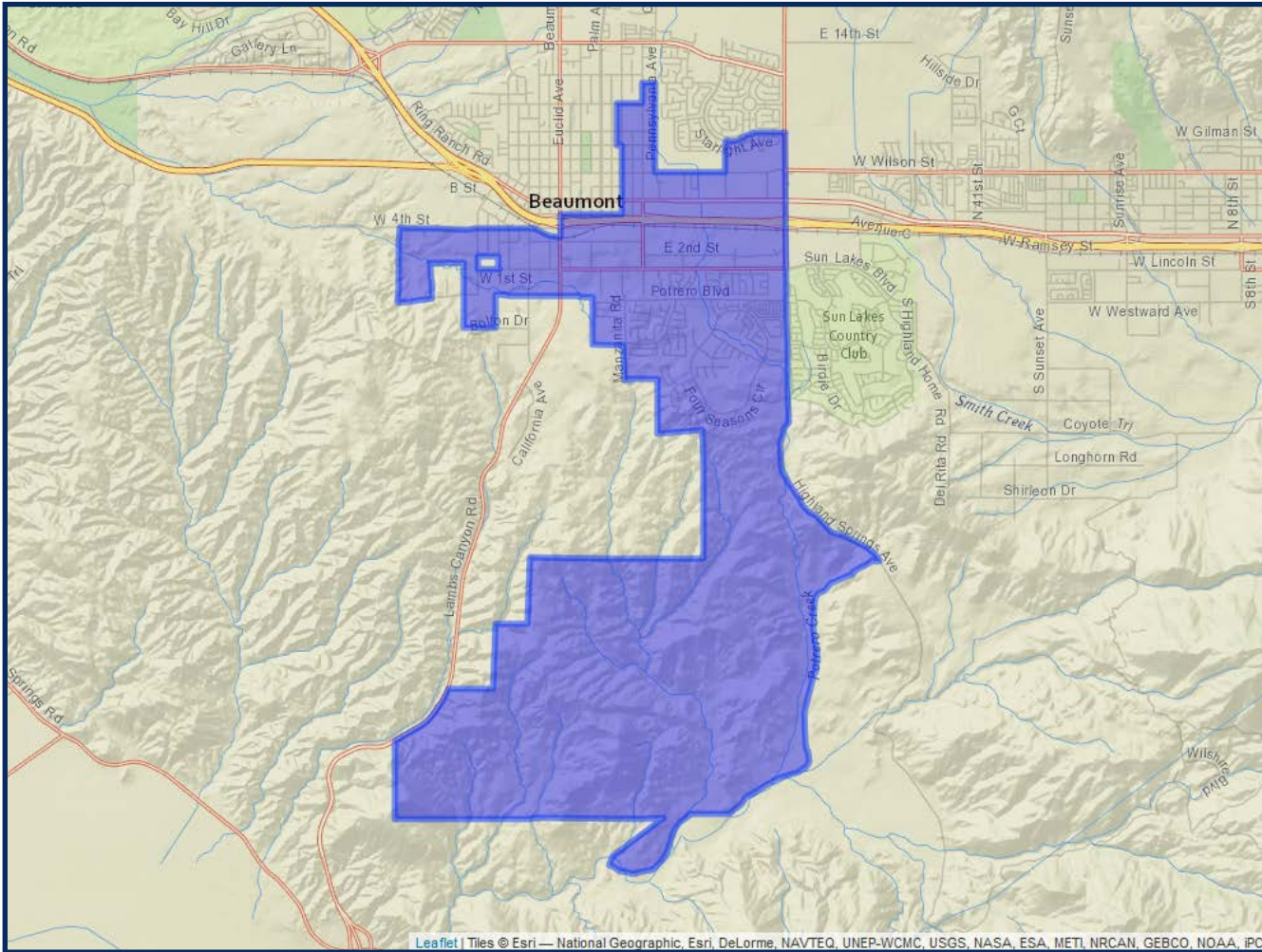
	2020 Count*	2019 CVAP*
Total	11,813	7,272
White	43.49%	48.60%
Black	3.95%	5.12%
Asian	5.05%	4.48%
Hispanic	42.28%	40.84%

\*Adjusted for prisoner reallocation



# REDISTRICTING BCVWD DRAFT 5

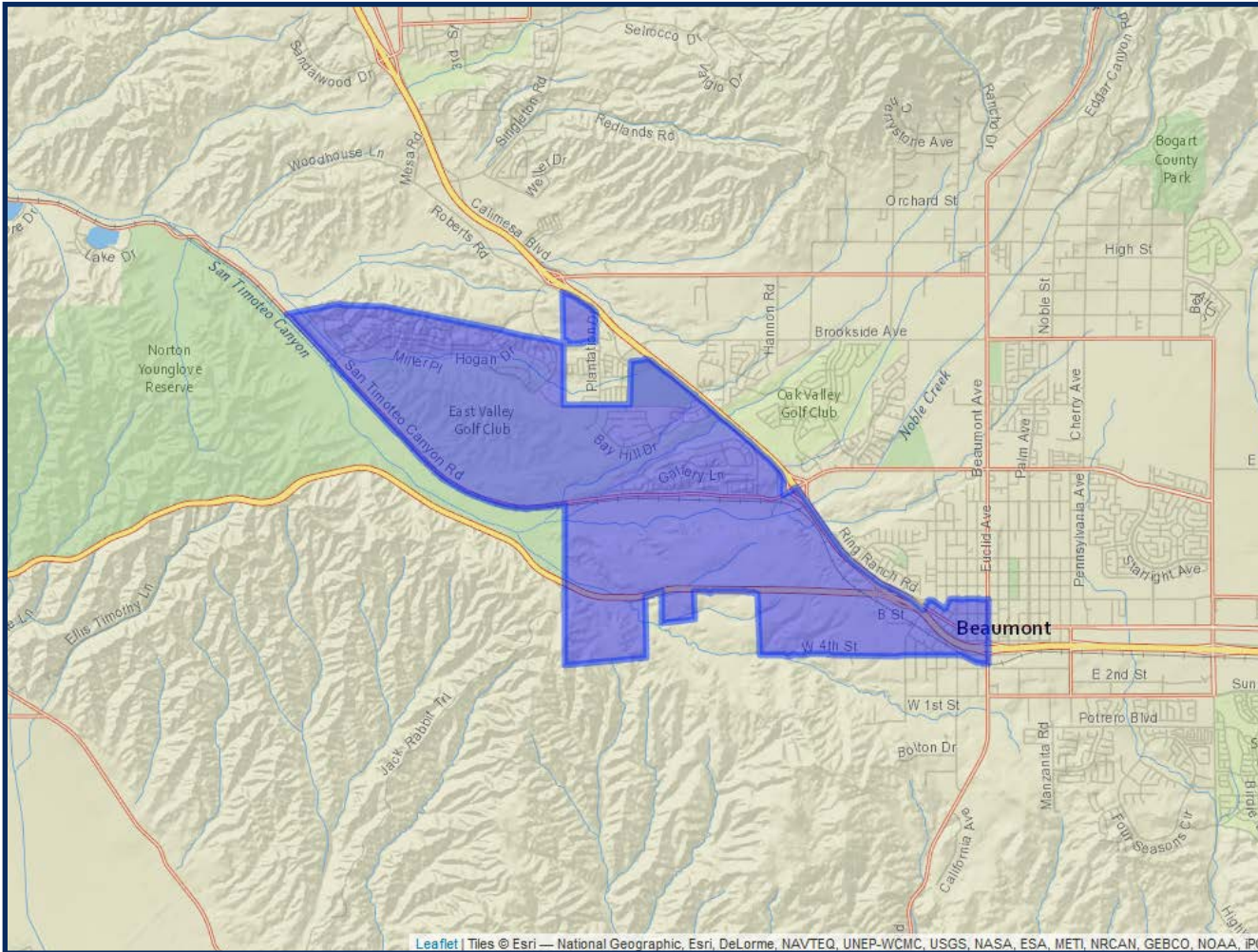
## DIVISION 2



	2020 Count*	2019 CVAP*
Total	11,856	7,980
White	36.57%	43.76%
Black	9.22%	11.54%
Asian	7.46%	8.10%
Hispanic	42.32%	34.40%

# REDISTRICTING BCVWD DRAFT 5

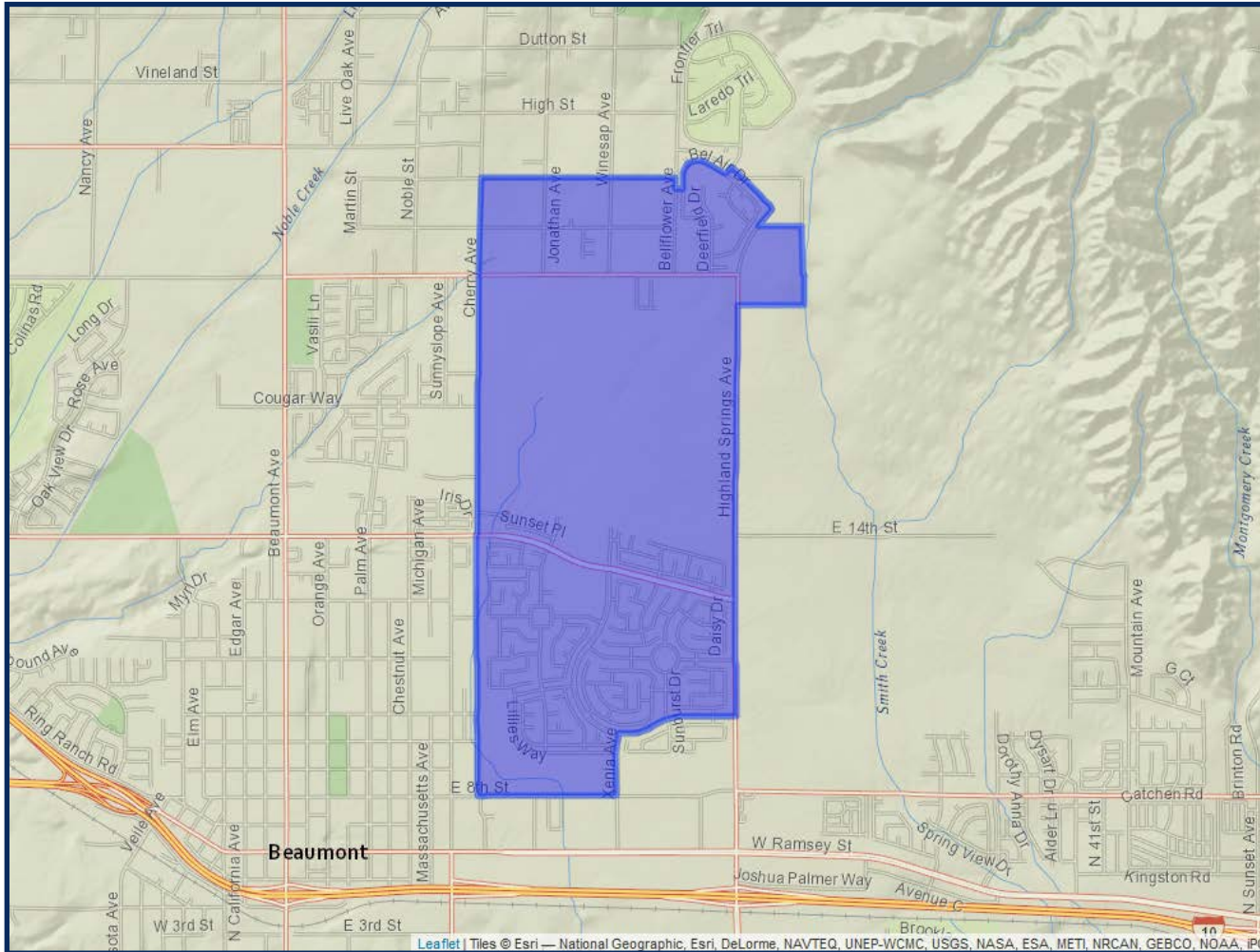
## DIVISION 3



	2020 Count*	2019 CVAP*
Total	11,944	6,183
White	33.91%	37.15%
Black	9.51%	6.29%
Asian	11.20%	11.81%
Hispanic	39.54%	39.77%



## DIVISION 4

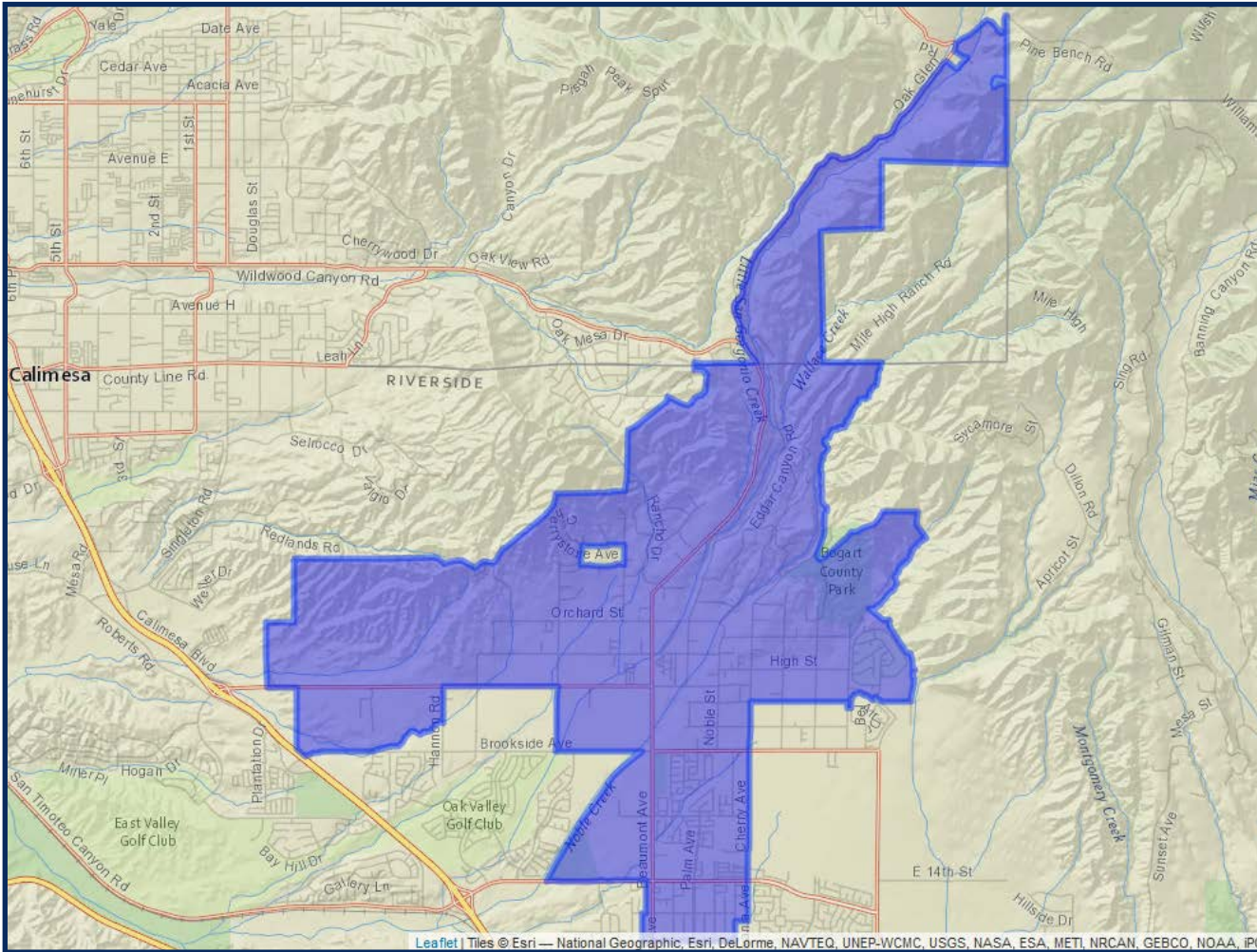


	2020 Count*	2019 CVAP*
Total	12,216	6,434
White	32.38%	34.16%
Black	9.97%	13.71%
Asian	11.76%	9.23%
Hispanic	40.12%	38.25%



# REDISTRICTING BCVWD DRAFT 5

## DIVISION 5



	2020 Count*	2019 CVAP*
Total	12,010	8,973
White	50.69%	57.07%
Black	3.31%	6.64%
Asian	2.90%	3.20%
Hispanic	38.03%	32.50%