



BEAUMONT-CHERRY VALLEY WATER DISTRICT
560 Magnolia Avenue, Beaumont, CA 92223

**SPECIAL MEETING OF THE BOARD OF DIRECTORS
NOTICE AND AGENDA**

*This meeting is hereby noticed pursuant to
California Government Code Section 54950 et. seq. and
under the provisions of Assembly Bill 361 and BCVWD Resolution 2022-04*

Thursday, April 7, 2022 – 11:00 a.m.
560 Magnolia Avenue, Beaumont, CA 92223

COVID-19 NOTICE

This meeting of the Board of Directors is open to the public who would like to attend in person. COVID-19 safety guidelines are in effect pursuant to the Cal/OSHA COVID-19 Prevention Emergency Temporary Standards and the California Department of Public Health Recommendations

- **Face coverings are recommended for vaccinated and unvaccinated persons and must be properly worn over the nose and mouth at all times**
- **Maintain 6 feet of physical distancing from others in the building who are not in your party**
- **There will be no access to restrooms in the building**

TELECONFERENCE NOTICE

The BCVWD Board of Directors will attend in person at the BCVWD Administrative Office or via Zoom Video Conference

To access the Zoom conference, use the link below:

<https://us02web.zoom.us/j/84318559070?pwd=SXlzMFlZCMGhOYTFlL2tnUGlpU3h0UT09>

*To telephone in, please dial: **(669) 900-9128***

*Enter Meeting ID: **843 1855 9070***

*Enter Passcode: **113552***

*For Public Comment, use the **“Raise Hand”** feature if on the video call when prompted, if dialing in, please **dial *9 to “Raise Hand”** when prompted*

Meeting materials are available on the BCVWD’s website:

<https://bcvwd.org/document-category/regular-board-agendas/>

BCVWD SPECIAL MEETING – APRIL 7, 2022

Call to Order: President Williams

Roll Call

Teleconference Verification

Public Comment

PUBLIC COMMENT: RAISE HAND OR PRESS *9 to request to speak when prompted

At this time, any person may address the Board of Directors on matters within its jurisdiction. However, state law prohibits the Board from discussing or taking action on any item not listed on the agenda. Any non-agenda matters that require action will be referred to Staff for a report and possible action at a subsequent meeting. **Please limit your comments to three minutes.** Sharing or passing time to another speaker is not permitted.

ACTION ITEMS

- 1. Adjustments to the Agenda**
- 2. Master Drainage Plan Line 16 Pipeline Relocation Project Budget Supplement Request for Additional Pipeline, (Pipeline 6) Relocation. (Staff Report shall be provided as Handout)**
- 3. Adjournment**

NOTICES

AVAILABILITY OF AGENDA MATERIALS - Agenda exhibits and other writings that are disclosable public records distributed to all or a majority of the members of the Beaumont-Cherry Valley Water District Board of Directors in connection with a matter subject to discussion or consideration at an open meeting of the Board of Directors are available for public inspection in the District's office, at 560 Magnolia Avenue, Beaumont, California ("District Office"). If such writings are distributed to members of the Board less than 72 hours prior to the meeting, they will be available from the District Office at the same time as they are distributed to Board Members, except that if such writings are distributed one hour prior to, or during the meeting, they can be made available from the District Office in the Board Room. Materials may also be available on the District's website: www.bcvwd.org.

REVISIONS TO THE AGENDA - In accordance with §54954.2(a) of the Government Code (Brown Act), revisions to this Agenda may be made up to 24 hours before the Special Board Meeting, if necessary, after mailings are completed. Interested persons wishing to receive a copy of the set Agenda may pick one up at the District's Main Office, located at 560 Magnolia Avenue, Beaumont, California, up to 24 hours prior to the Board Meeting.

REQUIREMENTS RE: DISABLED ACCESS - In accordance with §54954.2(a), requests for a disability related modification or accommodation, including auxiliary aids or services, in order to attend or participate in a meeting, should be made to the District Office, at least 48 hours in advance of the meeting to ensure availability of the requested service or

accommodation. The District Office may be contacted by telephone at (951) 845-9581, email at info@bcvwd.org or in writing at the Beaumont-Cherry Valley Water District, 560 Magnolia Avenue, Beaumont, California 92223.

CERTIFICATION OF POSTING

A copy of the foregoing notice was posted near the regular meeting place of the Board of Directors of Beaumont-Cherry Valley Water District and to its website at least 24 hours in advance of the meeting (Government Code §54954.2(a)).



**Beaumont-Cherry Valley Water District
Special Board Meeting
April 7, 2022**

Item 2

STAFF REPORT

TO: Board of Directors

FROM: Dan Jagers, General Manager

SUBJECT: Master Drainage Plan Line 16 Pipeline Relocation Project Budget Supplement Request for Additional Pipeline (Pipeline 6) Relocation

Staff Recommendation

Approve additional expenditure of an amount not to exceed \$147,400 for the Pipeline Relocation Project for Beaumont Master Drainage Plan (MDP) Line 16.

Background

As part of the ongoing activities related to the MDP Line 16 Storm Drain Project, the Board approved a budget not to exceed \$875,300 associated with MDP Line 16 water line relocation construction activities and grading operations, including material purchased and project contingencies to be distributed between various projects as necessary. At that meeting, the Board additionally authorized the General Manager to enter into a contract with Merlin Johnson Construction to provide labor, construction materials, equipment and testing necessary to complete the pipeline relocation project for five (5) pipelines in the amount of \$448,700 and work began on February 21, 2022.

Summary

As of April 6, 2022, the five (5) replacement pipelines are completed and final trench paving activities for said pipelines should be completed by April 7, 2022.

Riverside County Flood Control & Water Conservation District's contractor has commenced the storm drain installation project and has identified that approximately 635 linear of feet of existing District pipeline located in Grand Avenue west of Noble Street is located in a horizontal position that conflicts with the proposed storm drain alignment. Staff identifies that this pipeline was inadvertently not shown accurately on RCFC&WCD's which District staff used to identify alignment conflicts and also used to prepare the District's pipeline relocation program.

Staff further identifies that said conflicting pipeline (see Figure 1 below for location and Attachment 1 - Proposed realignment Construction Drawing Pipeline 6) is identified for replacement in the District's 2016 Master Plan and 2017 Capital Improvement Plan (See Attachments 3 and 4). Said pipeline is a portion of a pipeline which is identified to be replaced in the 2016 Master Plan as Pipeline P-3040-0019. Finally, this alignment conflict results in the need to relocate this pipeline immediately to assure timely continuance of MDP Line 16 Storm Drain construction project.

FIGURE 1 GRAND AVENUE PIPELINE 6 REPLACEMENT AREA



Pipeline P-3040-0019, as identified in the 2016 Masterplan and 2017 Capital Improvement Plan, is more specifically identified as an 8 in. pipeline to be replaced with an approximate length of 1,300 L.F. Said 2017 Capital Improvement Plan further identified a 2019 dollars replacement cost of \$282,679 (see Attachment 4). The Pipeline 6 proposed replacement component will complete approximately 50% of the programed project or 650 L. F of the 1,300 L. F.

The additional cost of this newly identified pipeline relocation project is set forth on Table 1 below:

Table 1 Pipeline 6 Estimated Project Cost

Item	Description	Estimated Cost
1	Merlin Johnson Estimated Labor Cost	\$94,000
2	District Provided Estimated Material Cost	\$40,000
3	Sub Total	\$134,000
4	Contingencies (10% rounded)	\$13,400
5	Total Requested Augmentation (rounded)	\$147,400

This amount most likely exceeds the approved contingency amounts for the project pipeline and grading activities as authorized by the Board during the October 28, 2021 Board Meeting (see Attachment 2 – October 28, 2021 Staff Report Item 6) and is beyond the authorization level of the General Manager. Addition of this work to the Merlin-Johnson construction contract must happen as soon as possible so as not to impede project progress being made by both BCVWD and Riverside County Flood Control.

Staff requests Board approval of an additional not to exceed amount of \$147,400 in order to supplement to the previously-approved project budget to provide for the relocation of said Pipeline 6.

Fiscal Impact

The Fiscal Impact of this budget supplement will not exceed \$147,400. The funding is available in Capital Replacement Reserves and will be reprogrammed from another project.

Attachments

1. Construction Drawing for Pipeline 6: Sta. 10+00 – Sta. 16+34±
2. October 28, 2021 Staff Report Item 6 - Approve Additional Expenditures for the previously Approved Pipeline Relocation Project for Beaumont Master Drainage Plan (MDP) Line 16, Award Contract for Pipeline Relocation Project for MDP Line 16, and Approve Operated Equipment Rental Funds for MDP Line 16 Phase II Pond Bank and Tank Site Grading
3. BCVWD 2016 Masterplan Map of 3040 Pressure Zone
4. BCVWD 2017 Capital Improvement Plan – Potable Water – 2017-2026 Appendix B

Staff Report prepared by Dan Jagers, General Manager and Lynda Kerney, Administrative Assistant



**Beaumont-Cherry Valley Water District
Regular Board Meeting
October 28, 2021**

Item 6

STAFF REPORT

TO: Board of Directors

FROM: Dan Jagers, General Manager

SUBJECT: **Approve Additional Expenditures for the Previously Approved Pipeline Relocation Project for Beaumont Master Drainage Plan (MDP) Line 16, Award Contract for Pipeline Relocation Project for MDP Line 16, and Approve Operated Equipment Rental Funds for MDP Line 16 Phase II Pond Bank and Tank Site Grading**

Staff Recommendation:

Consider the following:

1. Approve additional expenditure for Beaumont Master Drainage Plan (MDP) Line 16 in the amount of \$134,000 for a not to exceed total project amount of \$875,300 to cover increased costs associated with MPD Line 16 water line relocation construction activities and grading operations, including material purchased and project contingencies to be distributed between various project components as necessary.
2. Authorize General Manger to enter a contract with Merlin Johnson Construction to provide labor and construction equipment and testing necessary to complete the Pipeline Relocation Project for Beaumont Master Drainage Plan (MDP) Line 16 in the amount of \$448,700.
3. Approve authorization of fund expenditure in the amount not to exceed for Operated Equipment Rental with Weaver Grading, Inc. necessary to complete Noble Creek Recharge Facilities Phase II Pond Bank Grading in the amount of \$166,000.

Background:

At the April 14, 2021, Board Meeting, District staff presented the Staff estimated construction costs for facilities improvements related to the BCVWD's and Riverside County Flood Control & Water Conservation District (RCFC&WCD) Master Drainage Plan Project based on 60% design activities for project pipeline replacement activities and grading activities related to Noble Creek Recharge Facilities Phase 2 bank grading and Recycled Water Storage Tank grading in the amount of \$741,300.00 including the following project activities:

- 1, Pipeline Relocation Project necessary to accommodate the proposed storm drain facilities located in Grand Avenue,
2. Noble Creek Recharge Facilities Phase II Pond Bank Grading Project (NCRF Phase II Grading) necessary to accommodate project spillways between ponds 1 through 4 (Phase 1 grading activities)



3. Future Recycled Water Storage Tank No. 2 site grading located at the NCRF Phase II site. The Recycled Water Tank No. 2 grading was included to take advantage of soil generated from the MDP Line 16 Storm Drain construction activities and provide for necessary fill material required beneath the master planned future Recycled Water Tank No. 2.

At said April 14, 2021 meeting, the Board of Directors authorized construction and miscellaneous costs together with District Staff expenditures in an amount not to exceed \$741,300.00 and associated funding sources as shown in Table 1 and Table 2 below:

Table 1
TOTAL APPROVED PROJECT APPROPRIATION (Board Approved April 14, 2021)

APPROPRIATION ITEM	SUBTOTAL
Grand Avenue Pipeline Replacement Project	\$496,703.15
NCRF Phase II Grading	\$244,426.00
TOTAL APPROVED PROJECT APPROPRIATION	\$741,300.00

Table 2
SUMMARY OF PROJECT FUNDING COMPONENTS (Board Approved April 14, 2021)

FUNDING SOURCE	SUBTOTAL
Facilities Fees Funded (Restricted Funds) (~81.3%)	\$602,531.68
Capital Replacement Reserves Funded (~18.7%)	\$138,768.32
TOTAL APPROVED PROJECT FUNDING	\$741,300.00

Staff has now substantially completed the following project activities:

1. Completed MDP Line 16 pipeline replacement project design of facilities and bid of said work activities.
2. Completed bid process for the MDP Line 16 pipeline replacement project (Contractor Work and District furnished materials).
3. Finalized design of MDP Line 16 pond bank grading and reservoir grading activities and completed estimate of hours of equipment rental necessary to complete said grading work.
4. Secured 3 operated equipment rental quotations from local area vendors for hourly rates associated with operated rental equipment necessary to complete anticipated grading operations.

Based upon these activities, Staff identifies that additional cost need to be allocated by the Board of Directors to provide for complete the project construction, materials purchases, and equipment rental activities associated with the project. Staff further identifies that the increase costs represent the final project components and are most likely associated with the Country's



current economic climate which seems to be impacting construction costs as well as materials costs throughout the region, as evidenced by the higher than anticipated project costs.

Table 3 sets forth a comparison of approved appropriations and actual and anticipated costs associated with the project. Staff further identifies the “Revised Project Appropriation Summary” listed in Table 3 represents the revision to the project appropriation amounts requested under Staff Report Staff Recommendations.

Table 3
SUMMARY OF APRIL 14, 2021 BOARD EXPENDITURE AAPPROVAL
for MDP LINE 16 PROJECT COSTS

TOTAL APPROVED PROJECT APPROPRIATION (Board Approved April 14, 2021)		REVISED PROJECT APPROPRIATION SUMMARY(Board Approved April 14, 2021)					
ITEM	ITEM SUBTOTAL COST	Bid Amount/ Equipment Rental	Material Cost	District and Soft Costs	Contingency (~7%)	Total Cost	Cost Difference
Grand Avenue Pipeline Replacement Project	\$496,703.15	\$ 448,740.00	\$ 131,943.46	\$ 35,000.00	\$ 40,000.00	\$655,683.46	\$ 158,980.31
NCRF Phase II Grading	\$244,426.00	\$ 166,000.00	\$ 2,000.00	\$ 36,500.00	\$ 15,116.54	\$219,616.54	\$ (24,809.46)
TOTAL APPROVED PROJECT APPROPRIATION	\$741,300.00	PROJECT CONTINGENCY (7% OVERALL): \$ 55,116.54					
		REVISED PROJECT COST: \$875,300.00					
		REQUESTED ADDITIONAL EXPENDITURES: \$ 134,000.00					

Recommendation 1

Approve additional expenditure for Beaumont Master Drainage Plan (MDP) Line 16 in the amount of \$134,000 for a not to exceed total project amount of \$875,300 to cover increased costs associated with MPD Line 16 water line relocation construction activities and grading operations, including project contingencies to be distributed between various project components as necessary.

At the May 28, 2020, Beaumont-Cherry Valley Water District (District) Board Meeting, District staff presented estimated costs related to necessary pipeline replacements/relocations as part of the MDP Line 16 Storm Drain Project, a joint project between Riverside County Flood Control and Water Conservation District (RCFC&WCD) and the District. Said waterline replacements are programmed in the District’s Capital Improvement Plan (CIP) and were proposed to be funded using a combination of capacity charges (facilities fees) and capital replacement reserves. See “Attachment 1” for the Pipeline Relocation Project for Beaumont MDP Line 16 (Pipeline Relocation Project) Vicinity Map.

As part of Staff’s identification of costs associated with Staff Recommendation No. 2, District staff completed a Pipeline Replacement Plan and associated construction documents for the Master Drainage Plan MDP Line 16 work activities in late August 2021. Staff then solicited materials cost and bid the construction services activities as discussed hereafter.

District staff solicited pipeline material costs for all pipeline materials and appurtenances associated with said project from our selected biannual materials vendor in August 2021 based upon prepared plans. The cost for all pipeline materials and appurtenances was quoted at **\$131,943.46**, as identified in Table 3 above. District staff has further been informed that the



pipeline materials for the Project will not be delivered to the project site until at least January 2022, due to supply chain issues and labor issues.

The Pipeline Replacement Construction Documents for MDP Line 16 pipeline relocation activities were bid in accordance with District policy commencing on September 10, 2021. Said bids for construction services (labor, equipment, and backfill/pavement materials only, with the District providing pipeline materials and appurtenances) related to installation of District furnished materials and appurtenances were received from five (5) contractors and opened on September 30, 2021 at 3:00 PM.

After review, it was determined that Merlin Johnson Construction, Inc. (Merlin Johnson) was the lowest responsive bidder with a bid price of **\$448,740.00** for construction of the Pipeline

The bid amounts set forth in Table 4 include Base Bid Amounts which establish the recommended Basis of Award recommended as part of Staff Report Recommendation No. 2. Said Bid Schedules set forth the minimum work District staff anticipates will be required for replacement, disinfection, and testing of the pipeline components necessary to accommodate MDP Line 16 construction.

The bid results and Staff's recommended contractor are set forth in Table 4 below.

Table 4
MDP LINE 16 PIPELINE REPLACEMENT SUMMARY OF BID RESULT

Bidder (Contractor)	MDP Line 16 Pipeline Replacement Base Bid Amount/Basis of Award	Comment
Merlin Johnson Construction, Inc.	\$448,740.00	Recommended for Award
H&H General Contractors, Inc.	\$663,663.00	
Christensen Brothers General Engineering, Inc.	\$978,81.50	
Bonadiman Water, Inc.	\$643,040.00	
GJ Gentry General Engineering, Inc.	\$739,097.00	

At this time, District staff requests that the Board approve award of the work described above and authorize the General Manager to enter a contract for the MDP Pipeline Replacement Project with Merlin Johnson Construction, Inc. in the amount set forth in Table 4, above and as identified hereafter as Recommendation No. 2.

Recommendation 2

Award Contract for Pipeline Relocation Project for Beaumont Master Drainage Plan (MDP) Line 16 to Merlin Johnson Construction, Inc. In the amount of \$448,700. Note



Award amount does not include contingencies identified in Table 3 above in the additional amount of \$40,000 for construction, materials, and soft costs.

At the April 14, 2021, Board Meeting, District staff presented the estimated construction costs of grading work required at the Noble Creek Recharge Facilities Phase II Pond Bank Grading Project (NCRF Phase II Grading) which included the following components:

- **Phase 1:** Grading activities required for construction of the proposed spillways to be located between NCRF Ponds 1-4.
- **Phase 2:** Grading activities required to construct the tank site for the future 2 MG non-potable tank (identified in the CIP as NT-2800-0001)

District staff proposes to complete construction for the NCRF Phase II Grading Project in separate phases in order to remain ahead of the MDP Line 16 Storm Drain Project and avoid any potential impacts to the storm drain project construction schedule. Design of the grading of the NCRF Phase II Ponds is substantially complete, and District staff understands that grading activities for the pond banks will need to begin immediately following design completion to facilitate the construction schedule of the proposed spillways. The District has sufficient material on-site at the NCRF to grade the NCRF Phase II ponds and banks for the proposed spillways and can begin construction immediately after design completion.

Staff proposes to complete this work by managing said activities in house with operated equipment using an operated equipment supplier and has solicited 3 costs from local area equipment suppliers and prepared an estimated timeline and cost for work to define a not to exceed amount and ensure that all activities can be completed.

In October 2021, District staff solicited and received estimates from three (3) grading contractors for the cost of operated equipment (contractor to provide equipment and operator at prevailing wage, with District staff to provide direction and oversight of construction with survey and geotechnical services provided by consultants). The estimates for operated equipment received by the District are summarized in Table 5 below:



Table 5 – Phase 1 Grading Activity - Estimated Cost

Item	Equipment Description	Equipment Size	Estimated Equipment Hours	Weaver Grading			Infinity Recycling Materials			Ortiz Enterprises, Inc.		
				Equipment Mobilization/De-Mobilization Cost	Hourly Rate (Operated Equipment at Prevailing Wage)	Total Cost (Mobilization + PW Rate and Hours)	Equipment Mobilization/De-Mobilization Cost	Hourly Rate (Operated Equipment at Prevailing Wage)	Total Cost (Mobilization + PW Rate and Hours)	Equipment Mobilization/De-Mobilization Cost	Hourly Rate (Operated Equipment at Prevailing Wage)	Total Cost (Mobilization + PW Rate and Hours)
1	Scraper	623	190	\$1,500.00	\$275.00	\$53,750.00	\$1,200.00	\$262.50	\$51,075.00	\$2,400.00	\$362.00	\$71,180.00
2	Bulldozer	D-6	24	\$500.00	\$225.00	\$5,900.00	\$1,200.00	\$234.38	\$6,825.12	\$1,500.00	\$249.55	\$7,489.20
3	Sheepsfoot Roller	8-foot Drum	120	\$500.00	\$155.00	\$19,100.00	\$1,200.00	\$187.50	\$23,700.00	\$1,500.00	\$243.80	\$30,756.00
4	Blade		120	\$500.00	\$195.00	\$23,900.00	\$1,200.00	\$231.25	\$28,950.00	\$1,500.00	\$204.00	\$25,980.00
5	Water Truck	4,000 Gallon	170	\$500.00	\$145.00	\$25,150.00	\$1,200.00	\$150.00	\$26,700.00	\$1,500.00	\$203.55	\$36,103.50
6	Grade Checker	N/A	120	-	\$110.00	\$13,200.00	-	\$131.25	\$15,750.00	-	\$134.55	\$16,146.00
7	Mobilization 2 at Tank and Misc.	N/A	120	-		\$21,500.00	-		\$21,500.00	-		\$21,500.00
Mobilization Total:				\$3,500.00			\$6,000.00			\$8,400.00		
				Total Cost to Complete:		\$166,000.00	Total Cost to Complete:		\$180,500.12	Total Cost to Complete:		\$217,554.70
				Contingency (7%):		\$11,620.00	Contingency (7%):		\$12,635.01	Contingency (7%):		\$15,225.83
				Total Estimated Cost:		\$177,620.00	Total Estimated Cost:		\$193,35.13	Total Estimated Cost:		\$32,783.53



Table 3 – Operated Equipment for Phase 1 and 2 Grading Activities - Estimate Summary

	Weaver Grading	Infinity Recycling Materials	Ortiz Enterprises, Inc.
Total Cost (Mobilization + Prevailing Wage Rate X Hours)	\$166,000.00	\$183,600.14	\$ 225,185.64

District staff recommends executing a contract for **\$166,000.00** with **Weaver Grading** for the services of operated equipment for Phase 1 and Phase 2 (Pond Bank Grading and Reservoir) of the NCRF Phase II Grading Project. It should be noted that this amount does not include contingencies, material costs, and District soft cost associated with this work.

Recommendation 3

Approve authorization of fund expenditure in the amount not to exceed for Operated Equipment Rental with Weaver Grading, Inc. necessary to complete Noble Creek Recharge Facilities Phase II Grading in the amount of \$166,000. Note Award amount does not include contingencies identified in Table 3 above in the additional funds necessary for project contingencies, construction materials, and soft costs.

Phase 2 grading (future non-potable tank site) can occur simultaneously with the MDP Line 16 Storm Drain Project, as District staff intends to utilize excavated material from the storm drain trench to construct said tank site. Construction of the tank site does not have any impact on the construction activities or schedule of the MDP Line 16 Storm Drain, and therefore staff can complete this work as materials become available.

Summary:

Based on the above, District staff has estimated the total Pipeline Relocation Project cost (labor and materials) to be approximately **\$580,700.00**. The previously estimated cost associated with the design and construction of the Pipeline Relocation Project was \$496,703.15.

The estimated construction cost for the NCRF Phase II Grading Project was previously determined to be \$244,426.00 (assumes both Phase 1 and Phase 2). District staff proposes utilizing **\$166,000.00** of the originally approved budget for operated equipment and \$53,616.54 of the originally approved budget for time associated with District staff field efforts and geotechnical inspections (consultant) to complete the NCRF Phase II Grading Project.

District staff is requesting an authorization of expenditures not to exceed **\$134,000.00**, which would account for the difference between actual Project costs and previously approved Project expenditures (approximately \$84,000), as well as Project construction contingency.



Currently, District staff estimates the total construction cost for both the Pipeline Relocation Project and the NCRF Phase II Grading Project to be approximately **\$875,300.00** (rounded). District staff is requesting an approval of additional expenditures for the Pipeline Relocation Project and NCRF Phase 2 grading activities in an amount of **\$134,000.00** for the completion of the pipeline relocation work and grading activities previously described.

In order to avoid conflict with construction activities relating to the MDP Line 16 Project, District staff recognizes that the construction of the Pipeline Relocation Project and the Phase 1 of the NCRF Phase II Grading Project will need to occur rather quickly. Once the purchased pipeline materials are delivered, it is anticipated that the Pipeline Relocation Project will need to immediately move forward; RCFC&WCD staff has informed District staff that there is an estimated lead time of anywhere between four to five months for storm drain materials. The District will need to ensure that construction of the Pipeline Relocation Project not impact the construction schedule of the MDP Line 16 Storm Drain Project.

Fiscal Impact:

The fiscal impact to the District for the work for the previously approved Pipeline Relocation Project for Beaumont MDP Line 16 will be an additional amount not to exceed **\$134,000.00 (rounded)** with a total amount estimated to be approximately **\$655,683.46**. The additional expenditures for the Project are proposed to be funded by Capital Replacement Reserves and Facilities Fees. Please see Table 7 for a summary of the additional expenditures by funding source.

Table 7 – Additional Pipeline Relocation Project Appropriation – by Funding Source

TOTAL PIPELINE RELOCATION PROJECT ADDITIONAL APPROPRIATION REQUESTED - BY FUNDING SOURCE	
ITEM	ITEM SUBTOTAL COST
Grand Avenue Pipeline Replacement Project	\$134,000.00
Facilities Fees Funded (Restricted Funds)	\$44,200.00
Capital Replacement Reserves Funded	\$89,800.00

The fiscal impact to the District for the work for Phase 1 of the previously approved NCRF Phase II Pond Bank Grading and Tank Site Grading will be an amount not to exceed **\$219,616.54** (operated equipment, District staff time, and geotechnical consulting services). Both Phases 1 and 2 of the NCRF Phase II Pond Grading are to be funded by Facilities Fees, due to the nature of the MDP Line 16 Storm Drain Project being classified as a “new water source.”

Attachments:

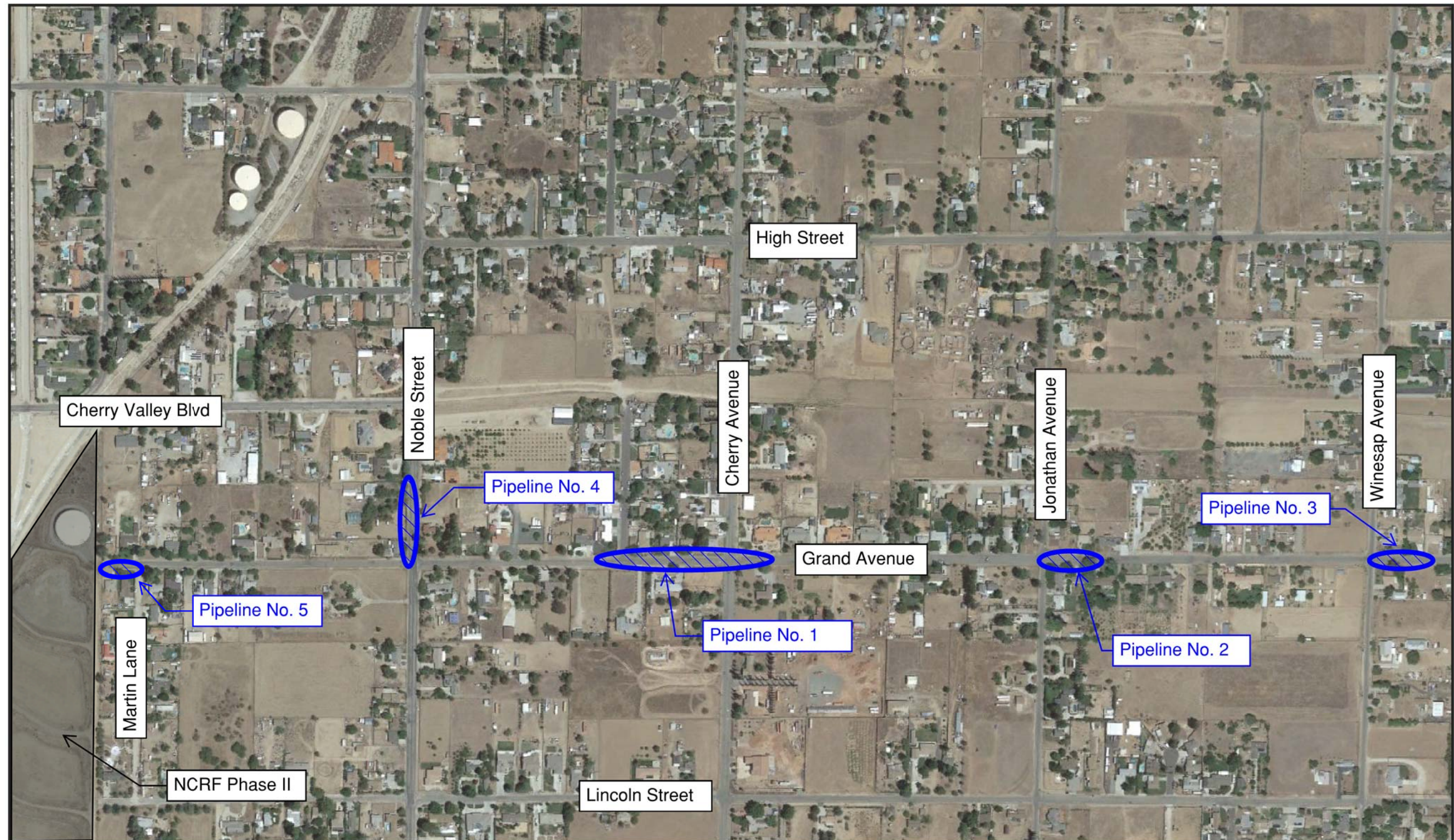
Attachment 1 – Pipeline Relocation Project for Beaumont MDP Line 16 Project Location Map

Attachment 2 – Construction Plans for the Pipeline Relocation Project for Beaumont MDP Line 16

Staff Report prepared by Daniel Baguyo, Civil Engineering Assistant

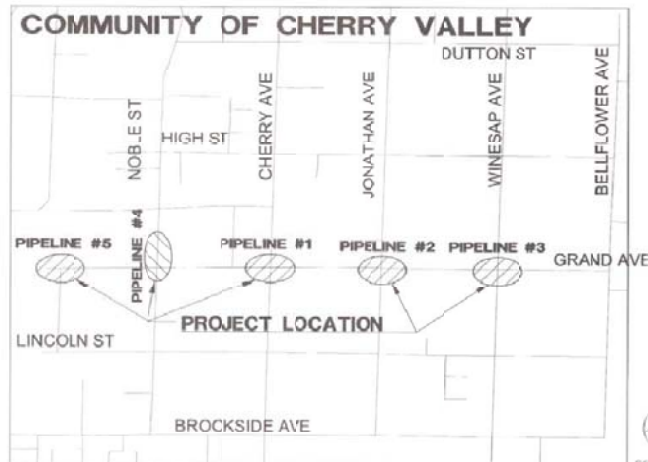


Attachment 1 - Pipeline Relocation Project for Beaumont MDP Line 16 Project Location Map



Not to Scale 

**ATTACHMENT 2 - CONSTRUCTION
PLANS FOR THE PIPELINE
RELOCATION PROJECT FOR
BEAUMONT MDP LINE 16**



VICINITY MAP

GENERAL CONSTRUCTION & NOTES

- ALL PIPES SHALL BE FULLY RESTRAINED WITH RESTRAINED JOINT GASKETS PER BCVWD STANDARD SPECIFICATIONS.
- INSTALL CLASS II AGGREGATE BASE (FURNISHED BY DISTRICT) FROM TOP OF PIPE TO GROUND SURFACE ALONG ALL NEW AND EXISTING PIPELINE TRENCHES PER BCVWD PLATE 6-1 AND 6-2, OR AS APPROVED BY THE COUNTY OF RIVERSIDE IN LOCATIONS WHERE NATIVE MATERIAL IS NOT SUITABLE FOR PROPER BACKFILL AND COMPACTION.
- DISINFECT ALL POTABLE WATER SERVICE PIPING AND APPURTENANCES (PER AWWA STANDARD).
- ALL STREET CENTERLINE STATIONING FROM BEAUMONT MDL LINE 16, STAGE 50 RECHARGE BASIN FEEDER PLANS.
- ALL PIPELINE STATIONING ALONG CENTERLINE OF PIPE, UNLESS OTHERWISE NOTED.

DISTRICT ENGINEER'S NOTICE TO CONTRACTOR(S)

THE EXISTENCE AND LOCATION OF ANY UNDERGROUND UTILITIES OR STRUCTURES SHOWN ON THESE PLANS ARE OBTAINED BY A SEARCH OF AVAILABLE RECORDS. TO THE BEST OF OUR KNOWLEDGE THERE ARE NO EXISTING UTILITIES EXCEPT THOSE SHOWN ON THESE PLANS. THE CONTRACTOR IS REQUIRED TO TAKE ALL PRECAUTIONARY MEASURES TO PROTECT THE UTILITIES SHOWN, AND ANY OTHER LINES OR STRUCTURES NOT SHOWN ON THESE PLANS, AND IS REQUIRED FOR THE PROTECTION OF, AND ANY DAMAGE TO THESE LINES OR STRUCTURES.

IT SHALL BE THE CONTRACTOR'S RESPONSIBILITY TO NOTIFY THE OWNER OF ALL UTILITIES OR STRUCTURES CONCERNED BEFORE STARTING WORK.

THE ENGINEER PREPARING THESE PLANS WILL NOT BE RESPONSIBLE FOR UNAUTHORIZED CHANGES TO OR USES OF THESE PLANS. ALL CHANGES TO THE PLANS MUST BE IN WRITING AND MUST BE APPROVED BY THE PREPARER OF THESE PLANS.

QUANTITIES SHOWN HEREON ARE PROVIDED FOR BIDDING PURPOSES ONLY. CONTRACTOR SHALL BE RESPONSIBLE FOR VERIFYING ALL QUANTITIES PRIOR TO BIDDING FOR CONSTRUCTION.

SHEET NO.	DESCRIPTION
1	TITLE, SHEET INDEX, VICINITY MAP, AND CONSTRUCTION NOTES
2	PIPELINE 1: STA.: 10+00 - STA.: 15+48± (GRAND AVE STA.: 31+57± - STA.: 37+00±)
3	PIPELINE 2: STA.: 10+00 - STA.: 11+81± (GRAND AVE STA.: 49+47± - STA.: 51+24±) PIPELINE 3: STA.: 10+00 - STA.: 12+37± (GRAND AVE STA.: 62+53± - STA.: 64+81±)
4	PIPELINE 4: STA.: 10+00 - STA.: 12+42± (NOBLE ST STA.: 10+58± - STA.: 12+95±) PLATE 6-1
5	CHERRY AVENUE CUT-IN TEE DETAIL AND GRAND AVENUE - WEST OF MARTIN LANE

SHEET INDEX

NOTE:

WORK CONTAINED WITHIN THESE PLANS SHALL NOT COMMENCE UNTIL AN ENCROACHMENT PERMIT HAS BEEN ISSUED.



BENCHMARK: NAVD83 DATUM

FD 1/2" IR WY RCFC TS CAP
FL
EL. 2816.75

BEAUMONT-CHERRY VALLEY WATER DISTRICT
ENGINEERING
STATION 01-0000
09-23-2021
PRINT DATE

BEAUMONT-CHERRY VALLEY WATER DISTRICT
PIPELINE RELOCATION PLAN
FOR
BEAUMONT MASTER DRAINAGE PLAN LINE 16
3040 PRESSURE ZONE

LEGEND

EXISTING WATER (8" DIAMETER)	---
PROPOSED WATER (8" DIAMETER)	---
EXISTING METER	---
FIRE HYDRANT	---
EXISTING SERVICE LATERAL	---
EXISTING RAW	---
EXISTING PL	---
CENTERLINE	---
EXISTING SEWER	---

ABBREVIATIONS

BEAUMONT-CHERRY VALLEY WATER DISTRICT	BCVWD
DUCTILE IRON PIPE	DIP
EXISTING	EX
NOT TO SCALE	NTS
PROPOSED	PROP
STATION	STA
STEEL	STL
PROTECT IN PLACE	PIP
FLANGED	FLGD
MECHANICAL JOINT	MJ
PLAIN END	PE

CONSTRUCTION NOTES

	QTY	UNIT
1. PROTECT IN PLACE	-	-
2. INSTALL 8" DIP (CLASS 35K) WITH POLYETHYLENE ENCASEMENT AND BEDDING PER BCVWD PLATE 6-1 (36" MIN COVER)	548	LF
3. INSTALL 8" - 45° FLGD X MJ ELBOW WITH EBAA IRON SERIES 1100 RESTRAINT	3	EA
4. INSTALL 8" FLGD TEE	1	EA
5. INSTALL 8" FLGD X MJ ADAPTER	4	EA
6. INSTALL 8" GATE VALVE	4	EA
7. INSTALL 8" X 4" FLGD REDUCER	1	EA
8. INSTALL 8" TRANSITION FLEX COUPLING FROM 8.60" - 9.06" (ROMAC LONG BARREL) AND TIES PER BCVWD PLATE 9	2	EA
9. INSTALL 4" FLGD GATE VALVE	2	EA
10. INSTALL 4" TRANSITION FLEX COUPLING FROM 4.5" - 4.81" (ROMAC LONG BARREL) AND TIES PER BCVWD PLATE 9	2	EA
11. DISINFECT ALL POTABLE WATER SERVICE PIPING AND APPURTENANCES (PER AWWA STANDARD)	-	-
12. ABANDON IN PLACE EXISTING PIPELINE AND PLUG SEVERED PIPE ENDS WITH 3" MINIMUM CLASS "C" CONCRETE PLUG (EACH END)	-	-
13. INSTALL DISTRICT FURNISHED 1" SERVICE SADDLE, CORPORATION STOP, AND SERVICE LATERAL PIPING PER BCVWD STANDARD PLATE 6-3, (WICE TESTING AND DISINFECTION IS COMPLETE, REMOVE EXISTING METER AND INSTALL NEW DISTRICT FURNISHED METER AND CONNECT TO NEW SERVICE LATERAL)	14	EA
14. INSTALL RESTRAINED JOINTS (FIELD-LOK 350 GASKETS, MEGA LUGS (IF MECHANICAL JOINT) OR DISTRICT APPROVED EQUAL)	28	EA
15. INSTALL THRUST BLOCK PER BCVWD PLATE 11-1 AND 11-2 (ASSUME SOIL BEARING PRESSURE OF 1500 LB/SF)	0.10	CY
16. INSTALL 2" RISER AND TEST PLATE FOR DISINFECTION AND TESTING. REMOVE TEST PLATE AT END OF CHLORINATION AND TESTING PROCESS. REMOVE RISER AND PLUG TEST LOCATION.	16	EA
17. INSTALL 8" - 45° MJ ELBOW WITH EBAA IRON SERIES 1100 RESTRAINT	4	EA
18. INSTALL 12" DIP (CLASS 35K) WITH POLYETHYLENE ENCASEMENT AND BEDDING PER BCVWD PLATE 6-1 (36" MIN COVER)	660	LF
19. INSTALL 12" - 45° FLGD X MJ ELBOW WITH EBAA IRON SERIES 1100 RESTRAINT	5	EA
20. INSTALL 12" - 45° MJ ELBOW WITH EBAA IRON SERIES 1100 RESTRAINT	7	EA
21. INSTALL 12" X 8" FLGD REDUCER	4	EA
22. INSTALL 12" - FLGD X MJ ADAPTER	1	EA
23. INSTALL 8" TRANSITION FLEX COUPLING FROM 8.60" - 9.06" (ROMAC LONG BARREL) AND TIES PER BCVWD PLATE 9	3	EA
24. INSTALL 6" X 36" (LONG) FLGD X PE STL SPOOL	3	EA
25. REMOVE EXISTING 6" PIPELINE (LIMITS AS INDICATED)	55	LF
26. INSTALL 12" X 10" FLGD REDUCER	2	EA
27. INSTALL 10" TRANSITION FLEX COUPLING FROM 10.89" - 11.40" (ROMAC LONG BARREL) AND TIES PER BCVWD PLATE 9	2	EA
28. INSTALL 10" X 36" (LONG) FLGD X PE STL SPOOL	2	EA
29. INSTALL 4" X 36" (LONG) FLGD X PE STL SPOOL	2	EA
30. INSTALL 10" DI FLGD CROSS	1	EA
31. INSTALL 16" BUTTERFLY VALVE	2	EA
32. INSTALL 16" X 36" (LONG) FLGD X PE STL SPOOL	2	EA
33. INSTALL 16" TRANSITION COUPLING AND TIES PER BCVWD PLATE 9. (ROMAC LONG BARREL, 16.00" - 16.40" GASKET)	2	EA
34. INSTALL 16" X 8" FLGD REDUCER	2	EA
35. INSTALL 6" DIP (CLASS 35K) WITH POLYETHYLENE ENCASEMENT AND BEDDING PER BCVWD PLATE 6-1 (36" MIN COVER)	158	LF
36. INSTALL 6" - FLGD TEE	1	EA
37. INSTALL 6" X 4" FLGD ECCENTRIC REDUCER	1	EA
38. INSTALL 6" GATE VALVE PER BCVWD PLATE 2	1	EA
39. INSTALL 6" FLGD X MJ ADAPTER	2	EA
40. INSTALL 6" X 24" (LONG) FLGD X PE STL SPOOL	2	EA
41. INSTALL 4" BLOWOFF ASSEMBLY PER BCVWD PLATE 3-1	1	EA
42. INSTALL 12" GATE VALVE PER BCVWD PLATE 2	1	EA
43. COMPLETE ALL TRENCH EXCAVATION, BACKFILL, AND PAVEMENT REPAIR PER BCVWD PLATE 6-1	-	-
44. INSTALL 8" X 24" (LONG) FLGD X PE STL SPOOL	1	EA
45. INSTALL 6" TRANSITION FLEX COUPLING FROM 6.60" - 6.91" X 715" - 7.35" (ROMAC LONG BARREL)	1	EA
46. INSTALL 6" X 35" (LONG) FLGD X PE STL SPOOL	1	EA

GENERAL NOTES

- ALL WORK SHOWN ON THESE PLANS SHALL BE PERFORMED IN ACCORDANCE WITH THE DISTRICT STANDARDS FOR THE FURNISHING OF MATERIALS AND THE CONSTRUCTION OF WATER AND RECYCLED WATER FACILITIES AND PREPARATION OF WATER SYSTEM PLANS, LATEST REVISION, AND THE ADOPTED ADDENDUMS THERETO.
- WORK SHALL BE PERFORMED BY A CONTRACTOR LICENSED IN THE STATE OF CALIFORNIA, EXPERIENCED IN WATER UTILITY CONSTRUCTION.
- UNLESS OTHERWISE INDICATED, ALL PIPES SHALL BE CEMENT MORTAR LINED DUCTILE IRON PIPE, MINIMUM PRESSURE CLASS 350, WITH PUSH-ON JOINTS. ALL PIPES SHALL BE INSTALLED WITH TRACER WIRE AND WITH POLYETHYLENE ENCASEMENT. TRACER WIRE SHALL BE 14-GAUGE, INSULATED (BLUE COLOR) SOLID COPPER WIRE.
- FOR SEPARATION REQUIREMENTS BETWEEN WATER AND RECYCLED WATER, STORM DRAINS, AND SEWER LINES, SEE STATE OF CALIFORNIA CODE OF REGULATIONS, TITLE 22, SECTION 64572.
- CONTRACTOR SHALL CONTACT UNDERGROUND SERVICE ALERT OF SOUTHERN CALIFORNIA (TELEPHONE 811 / 800-227-2600) FOR LOCATION OF ALL UNDERGROUND UTILITIES TWO WORKING DAYS PRIOR TO COMMENCING WORK.
- CONTRACTOR SHALL OBTAIN NECESSARY PERMITS FROM CITY OF BEAUMONT AND/OR RIVERSIDE COUNTY, AS APPROPRIATE, PRIOR TO CONSTRUCTION.
- CONTRACTOR SHALL NOTIFY THE DISTRICT AT (951) 845-9581 TWO WORKING DAYS PRIOR TO COMMENCING WORK ON THE WATER UTILITY INSTALLATION. CONTRACTOR SHALL NOTIFY DISTRICT BY PRECEDING WEDNESDAY AT 4:00 P.M. PRIOR TO WORKING DURING THE WEEKEND. CANCELLATIONS SHALL BE NOTIFIED TO THE DISTRICT BY PRECEDING FRIDAY AT 3:00 P.M.
- NO EXISTING DISTRIBUTION SYSTEM VALVE SHALL BE OPERATED BY THE CONTRACTOR. DISTRICT PERSONNEL WILL OPERATE ALL NECESSARY VALVES.
- NO DEVIATIONS FROM THESE PLANS SHALL BE PERMITTED WITHOUT THE APPROVAL OF THE DISTRICT.
- EXISTING WATER MAINS SHALL NOT BE TAKEN OUT OF SERVICE FOR MORE THAN 4 HOURS. CONTRACTOR SHALL NOTIFY ALL WATER USERS AFFECTED BY THE SHUTDOWN A MINIMUM OF 48 HOURS PRIOR TO THE ACTUAL SHUTDOWN. INDICATE THE DATE AND PRECISE HOURS THAT THE MAIN WILL BE TAKEN OUT OF SERVICE.
- CONTRACTOR SHALL CONFORM TO THE STREET EXCAVATION REPLACEMENT STANDARDS OF THE CITY OF BEAUMONT.
- CONTRACTOR SHALL NOTIFY THE DISTRICT AT (951) 845-9581 TWO WORKING DAYS PRIOR TO PLACEMENT OF CONCRETE FOR SIDEWALKS.
- CONTRACTOR TO INSTALL MINIMUM 1" COPPER, TYPE K, SERVICE LATERALS IN ACCORDANCE WITH DISTRICT SPECIFICATIONS SHOWN ON DISTRICT STANDARD PLATE 6-2, PLATE 6-3, AND PLATE 12. ALL COPPER SERVICES SHALL BE INSTALLED WITH 1A-E WRAP AND WITH POLYETHYLENE ENCASEMENT.
- CONTRACTOR SHALL COORDINATE ALL RECONNECTS WITH DISTRICT PERSONNEL PRIOR TO ANY CONNECTIONS OR RETIREMENTS OF ANY DISTRICT FACILITIES.
- CONTRACTOR SHALL BEAR ALL COSTS FOR THE CORRECTION OR REMOVAL AND REPLACEMENT OF DEFECTIVE WORK, AND ALL ADDITIONAL DIRECT AND INDIRECT COSTS THE CITY, COUNTY, OR DISTRICT MAY INCUR ON ACCOUNT OF DEFECTIVE WORK, INCLUDING THE COSTS OF ADDITIONAL ADMINISTRATIVE, PROFESSIONAL CONSULTANT, INSPECTION, TESTING, AND OTHER SERVICES.
- ALL PIPE SHALL BE HYDRO TESTED, DISINFECTED AND APPROVED PRIOR TO FINAL CONNECTION TO EXISTING WATER LINES.
- ALL MATERIALS SHALL BE OF DOMESTIC ORIGIN AND NOT OF FOREIGN MANUFACTURE.
- CONTRACTOR SHALL FURNISH TO THE DISTRICT COPIES OF ALL SOIL COMPACTION TEST REPORTS FOR THE INSTALLED WATER MAINS TWO (2) WORKING DAYS PRIOR TO HYDRO TESTING OF PIPES.
- CONTRACTOR SHALL FURNISH DISTRICT WITH PROJECT SPECIFIC MATERIALS OF CONSTRUCTION SUBMITTALS (IN PDF FORMAT) FOR REVIEW APPROVAL PRIOR TO COMMENCING CONSTRUCTION.
- CONTRACTOR SHALL KEEP AND MAINTAIN AT THE JOB SITE ONE (1) SET OF RECORD DRAWINGS. CONTRACTOR SHALL MARK ON DRAWINGS ALL CHANGES IN PROJECT CONDITIONS, LOCATIONS, CONFIGURATIONS AND ANY DEVIATIONS WHICH MAY VARY FROM THE DRAWINGS. THESE MASTER RECORD DRAWINGS SHALL BE MAINTAINED AND UP TO DATE DURING THE PROGRESS OF WORK. RECORD DRAWINGS SHALL BE ACCESSIBLE TO THE DISTRICT AT ALL TIMES DURING CONSTRUCTION AND A COPY OF SAD RECORD DRAWINGS SHALL BE DELIVERED TO THE DISTRICT UPON COMPLETION OF THE WORK.

CONTRACTOR'S RESPONSIBILITY FOR THE JOB SITE

CONTRACTOR AGREES THAT IN ACCORDANCE WITH GENERALLY ACCEPTED CONSTRUCTION PRACTICES, CONSTRUCTION CONTRACTOR WILL BE REQUIRED TO ASSUME SOLE AND COMPLETE RESPONSIBILITY FOR JOB SITE CONDITIONS DURING THE COURSE OF CONSTRUCTION OF THE PROJECT, INCLUDING SAFETY OF ALL PERSONS AND PROPERTY, THAT THIS REQUIREMENT SHALL BE MADE TO APPLY CONTINUOUSLY AND NOT BELIMITED TO NORMAL WORKING HOURS, AND CONSTRUCTION CONTRACTOR FURTHER AGREES TO DEFEND, INDEMNIFY AND HOLD DESIGN PROFESSIONAL HARMLESS FROM ANY AND ALL LIABILITY, REAL OR ALLEGED, IN CONNECTION WITH THE PERFORMANCE OF WORK ON THIS PROJECT, EXCEPT LIABILITY ARISING FROM THE SOLE NEGLIGENCE OF DESIGN PROFESSIONAL.

PZ 3040

SCALE AS NOTED

FIELD BOOK N/A

DESIGN DAB

DRAWN DAB

CHECKED MBS

BCVWD

PIPELINE RELOCATION PLAN

TITLE, SHEET INDEX, VICINITY MAP,
AND CONSTRUCTION NOTES

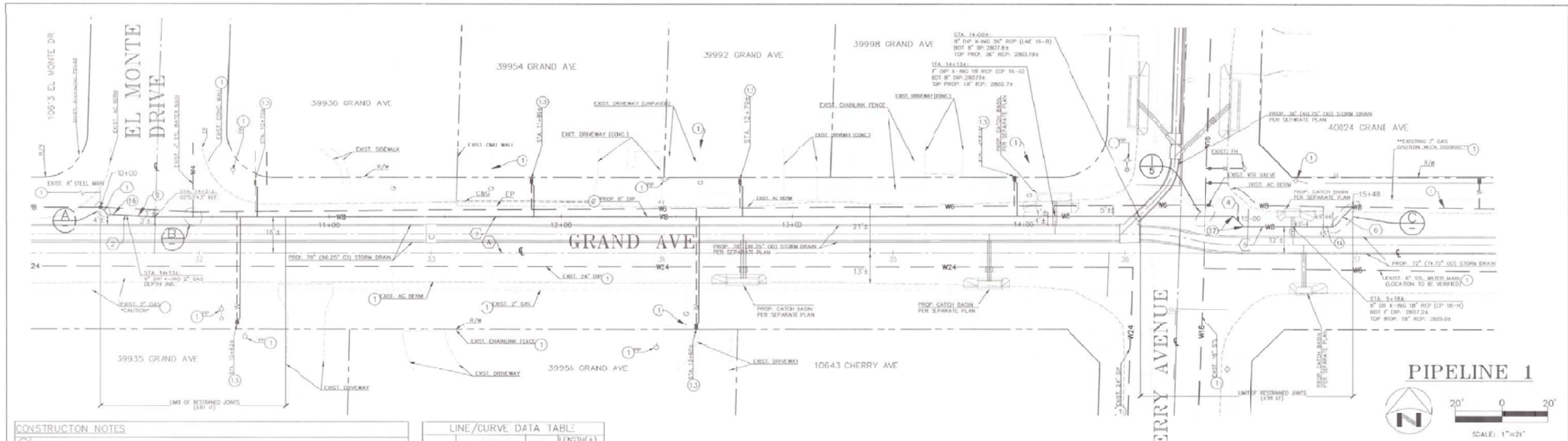
SHEET

1

OF 1 SHEETS

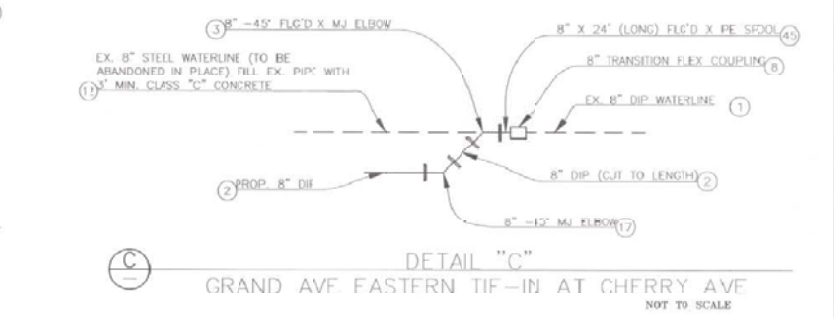
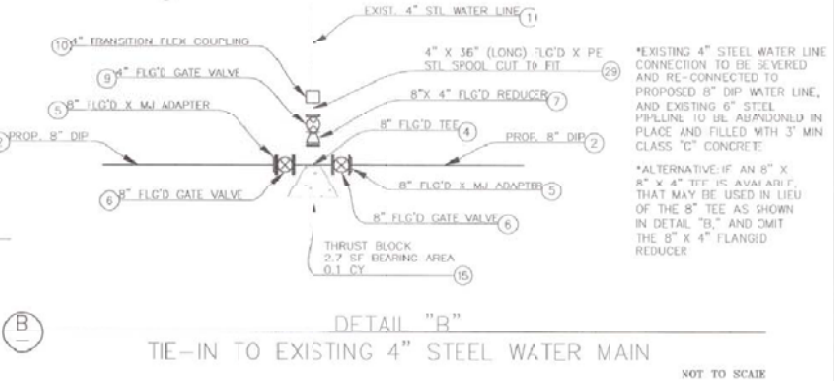
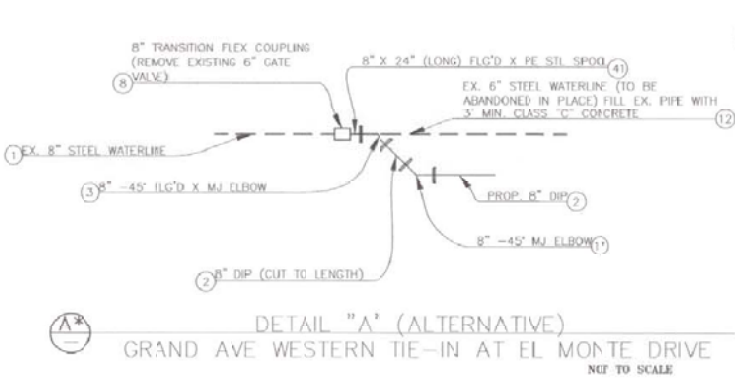
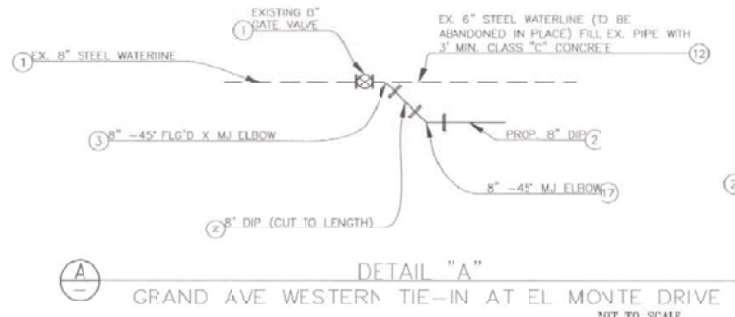
170 W

FILE NO.



- CONSTRUCTION NOTES**
- PROTECT IN PLACE
 - INSTALL 8" DIP (CLASS 350) WITH POLYETHYLENE ENCASEMENT AND BEDDING PER BCVWD PLATE 6-1 (36" MIN. COVER)
 - INSTALL 8" - 45° FLG'D X MJ ELBOW, WITH EBAA IRON SERIES 1100 RESTRAINT
 - INSTALL 8" FLG'D TEE
 - INSTALL 8" FLG'D X MJ ADAPTER
 - INSTALL 8" GATE VALVE
 - INSTALL 8" X 4" FLG'D REDUCER
 - INSTALL 8" TRANSITION FLEX COUPLING FROM 8.40' - 9.60' (ROMAC LONG BARREL) AND TIES PER BCVWD PLATE 9.
 - INSTALL 4" FLG'D GATE VALVE
 - INSTALL 4" TRANSITION FLEX COUPLING FROM 3.80' - 4.05' (ROMAC LONG BARREL) AND TIES PER BCVWD PLATE 9
 - DISINFECT ALL POTABLE WATER SERVICE PIPING AND APPURTENANCES (PER AWWA STANDARD)
 - ABANDON IN PLACE EXISTING PIPELINE AND PLUG SEVERED PIPE ENDS WITH 3" MINIMUM CLASS "C" CONCRETE PLUG
 - INSTALL DISTRICT FURNISHED 1" SERVICE SADDLE, CORPORATION STOP, AND SERVICE LATERAL PIPING PER BCVWD STANDARD PLATE 6-3. ONCE TESTING AND DISINFECTION IS COMPLETE, REMOVE EXISTING METER AND INSTALL NEW DISTRICT FURNISHED METER AND CONNECT TO NEW SERVICE LATERAL
 - INSTALL RESTRAINED JOINTS (FIELD-LOK 350 GASKETS, MEGA LUGS (IF MECHANICAL JOINT) OR DISTRICT APPROVED EQUAL)
 - INSTALL THRUST BLOCK PER BCVWD PLATE 11-1 AND 11-2 (ASSUME SOIL BEARING PRESSURE OF 1500 LB/SF)
 - INSTALL 2" RISER AND TEST PLATE FOR DISINFECTION AND TESTING. REMOVE TEST PLATE AT END OF CHLORINATION AND TESTING PROCESS. REMOVE RISER AND PLUG TEST LOCATION.
 - INSTALL 8" - 45° MJ ELBOW, WITH EBAA IRON SERIES 1100 RESTRAINT
 - INSTALL 4" X 36" (LONG) FLG'D X PE STL SPOOL
 - INSTALL 8" X 24" (LONG) FLG'D X PE STL SPOOL
 - INSTALL 8" X 24" (LONG) FLG'D X PE DI SPOOL

LINE/CURVE DATA TABLE			
BEARING/DELTA	RADIUS	LENGTH(±) (LF)	
① N 45°0'55" W	-	4	
② N 87°12'33" W	-	20	
③ N 89°53'44" E	-	466	
④ N 44°19'33" W	-	9	
⑤ N 89°58'17" E	-	39	
⑥ N 45°44'07" E	-	12	
GRAND AVENUE CENTERLINE DATA TABLE			
⑦ N 89°55'57" E	-	632	



- GENERAL CONSTRUCTION & NOTES**
- ALL PIPELINES SHALL BE FULLY RESTRAINED WITH RESTRAINED JOINT GASKETS PER BCVWD STANDARD SPECIFICATIONS.
 - FURNISH AND INSTALL CLASS II APPROPRIATE BACKFILL FROM TOP OF PIPE ZONE TO GROUND SURFACE ALONG ALL NEW AND EXISTING PIPELINE TRENCHES PER BCVWD PLATE 6-1 AND 6-2 OR AS APPROVED BY THE COUNTY OF RIVERSIDE IN LOCATIONS WHERE NATIVE MATERIAL IS NOT SUITABLE FOR PROPER BACKFILL AND COMPACTION.
 - DISINFECT ALL POTABLE WATER SERVICE PIPING AND APPURTENANCES (PER AWWA STANDARD)
 - ALL STREET CENTERLINE STATIONING FROM BEAUMONT MDP LINE 16, STAKE 50 RECHARGE BASIN FEEDER PLANS.
 - ALL PIPELINE STATIONING ALONG CENTERLINE OF PIPE, UNLESS OTHERWISE NOTED.

NOTE:
WORK CONTAINED WITHIN THESE PLANS SHALL NOT COMMENCE UNTIL AN ENCROACHMENT PERMIT HAS BEEN ISSUED.

BENCHMARK: NAVD83 DATUM
E-17350
FD 1/2" IR W/ RCIC TS CAP
FL
EL: 2815.73
BEAUMONT-CHERRY VALLEY WATER DISTRICT
09-25-202

48 hours BEFORE excavation
1-(800)227-2600
CALL Underground Service Alert



BEAUMONT-CHERRY VALLEY WATER DISTRICT

569 Main Street, Beaumont, CA 92223 • 951-845-9561

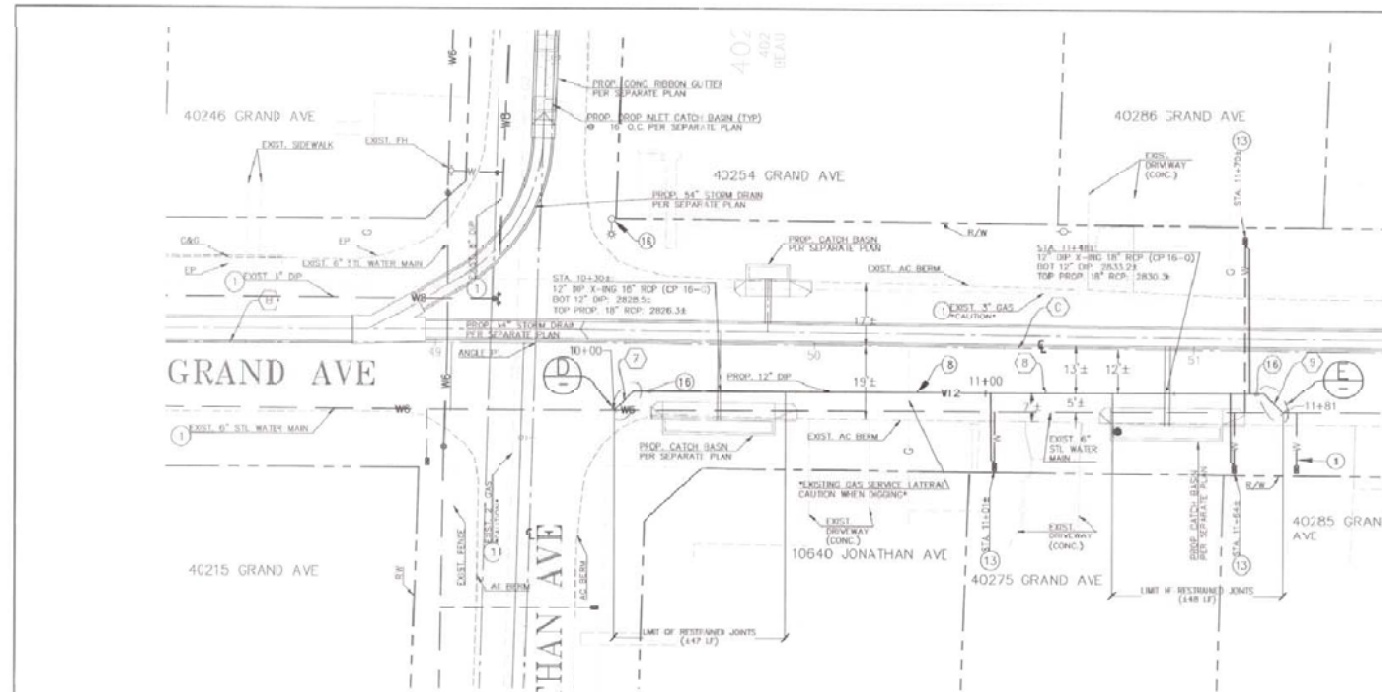
APPROVED BY: *[Signature]*
REGISTERED ENGINEER No. 72232 DATE 7/29/21

SCALE: AS NOTED
FIELD BOOK: N/A
DESIGN: DAB
DRAWN: DAB
CHECKED: MBS

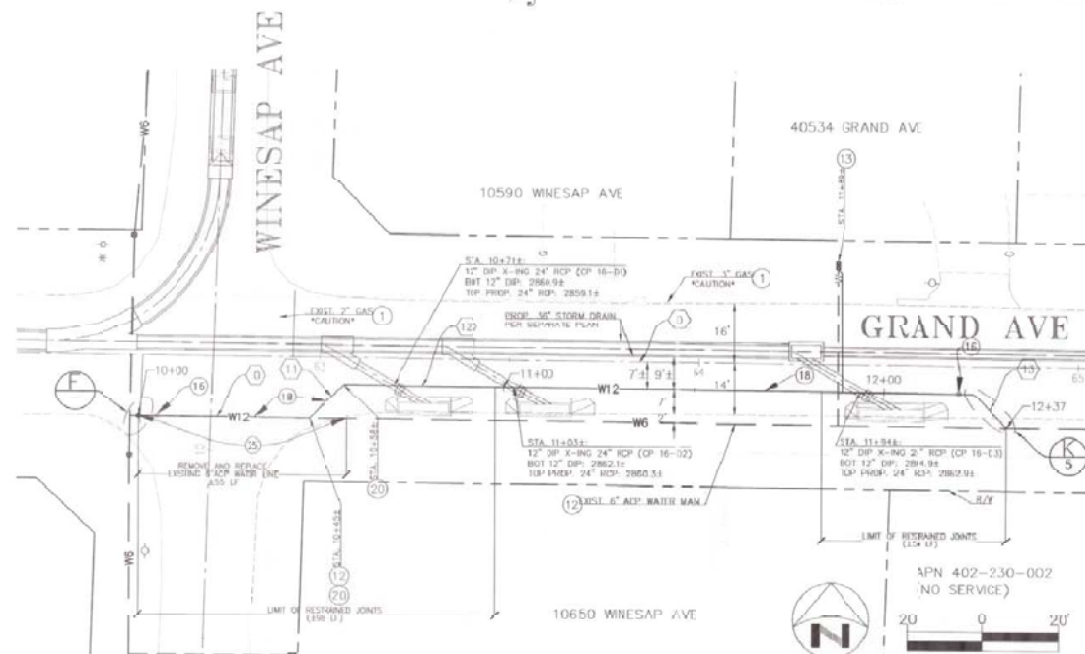
BCVWD
PIPELINE RELOCATION PLAN
PIPELINE 1: STA.: 10+00 - STA.: 15+48±
(GRAND AVE STA.: 31+57± - STA.: 37+00±)

PZ 3040

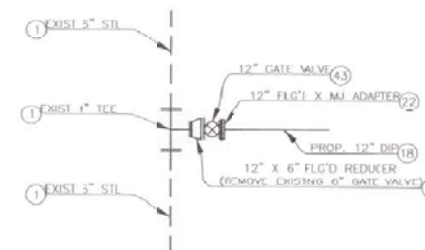
SHEET
2
OF 5 SHEETS
970 W
FILE NO.



PIPELINE 2



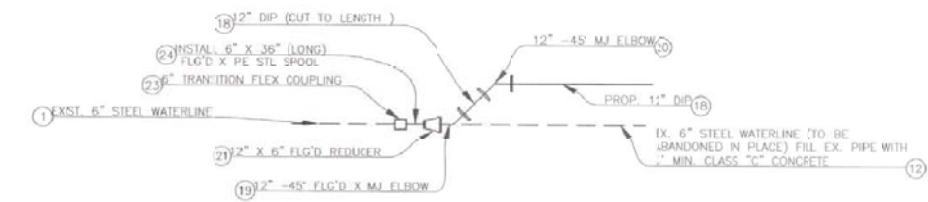
PIPELINE 3



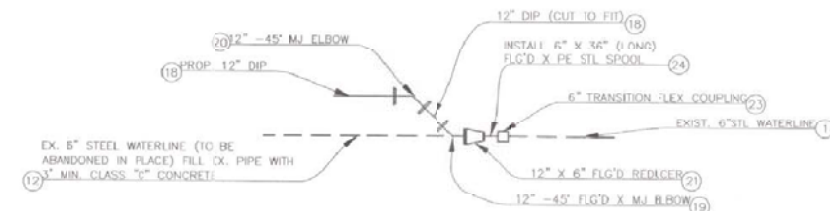
DETAIL "F"
TIE-IN TO EXISTING 6" STEEL WATER MAIN

*CONTRACTOR TO COORDINATE WITH DISTRICT FIELD STAFF TO SHUT DOWN EXISTING 6" LINE IN WINESAP AVENUE USING VALVES AT THE NORTHWEST AND SOUTHWEST CORNERS OF GRAND AVENUE AND WINESAP AVENUE.

LINE/CURVE DATA TABLE			
	BEARING/DELTA	RADIUS	LENGTH(±) (L)
(7)	N 45°00'00" E	—	7
(8)	N 90°00'00" E	—	166
(9)	N 45°00'00" W	—	7
(10)	N 89°28'40" W	—	45
(11)	N 45°31'20" E	—	13
(12)	N 89°28'40" W	—	166
(13)	N 44°28'40" W	—	13
GRAND AVENUE CENTERLINE DATA TABLE			
(H)	N 89°38'17" E	—	98
(C)	N 89°00'55" W	—	225
(D)	N 89°38'53" W	—	284



DETAIL "D"
PIPELINE 2 WESTERN TIE-IN AT JONATHAN AVE



DETAIL "E"
12" DIP TIE-IN TO EXISTING 6" STEEL WATER MAIN

CONSTRUCTION NOTES

- PROTECT IN PLACE
- DISINFECT ALL POTABLE WATER SERVICE PIPING AND APPURTENANCES (PER AWWA STANDARD)
- ABANDON IN PLACE EXISTING PIPELINE AND PLUG SEVERED PIPE ENDS WITH 3" MINIMUM CLASS "C" CONCRETE PLUG
- INSTALL DISTRICT FURNISHED 1" SERVICE SADDLE, CORPORATION STOP, AND SERVICE LATERAL PIPING PER BCVWD STANDARD PLATE 6-3. ONCE TESTING AND DISINFECTION IS COMPLETE, REMOVE EXISTING METER AND INSTALL NEW DISTRICT FURNISHED METER AND CONNECT TO NEW SERVICE LATERAL
- INSTALL RESTRAINED JOINTS (FIELD-LOC 350 GASKETS, MEGA LIGS (IF MECHANICAL JOINT) OR DISTRICT APPROVED EQUAL)
- INSTALL 2" RISER AND TEST PLATE FOR DISINFECTION AND TESTING. REMOVE TEST PLATE AT END OF CHLORINATION AND TESTING PROCESS. REMOVE RISER AND PLUG TEST LOCATION.
- INSTALL 12" DIP (CLASS 300) WITH POLYETHYLENE ENCASEMENT AND BEDDING PER BCVWD PLATE 6-1 (35" MIN COVER)
- INSTALL 12" - 45" FLG'D 3 MJ ELBOW, WITH EBAA IRON SERIES 1100 RESTRAINT
- INSTALL 12" - 45" MJ ELBOW, WITH EBAA IRON SERIES 1100 RESTRAINT
- INSTALL 12" X 6" FLG'D REDUCER
- INSTALL 12" - FLG'D X MJ ADAPTER
- INSTALL 6" TRANSITION FLEX COUPLING FROM 6.60" - 6.01" (ROMAC LONG BARREL) AND TEST PER BCVWD PLATE 9
- INSTALL 6" X 36" (LONG) FLG'D X PE STL SPOOL
- REMOVE EXISTING 6" PIPELINE (LIMITS AS INDICATED)
- INSTALL 12" GATE VALVE PER BCVWD PLATE 2

GENERAL CONSTRUCTION & NOTES

- ALL PIPELINES SHALL BE FULLY RESTRAINED WITH RESTRAINED JOINT GASKETS PER BCVWD STANDARD SPECIFICATIONS.
- INSTALL CLASS 3 AGGREGATE RASE (FURNISHED BY DISTRICT) FROM TOP OF PIPE ZONE TO GROUND SURFACE ALONG ALL NEW AND EXISTING PIPELINE TRENCHES PER BCVWD PLATE 6-1 AND 6-2, OR AS APPROVED BY THE COUNTY OF RIVERSIDE IN LOCATIONS WHERE NATIVE MATERIAL IS NOT SUITABLE FOR PROPER BACKFILL AND COMPACTION.
- DISINFECT ALL POTABLE WATER SERVICE PIPING AND APPURTENANCES (PER AWWA STANDARD)
- ALL STREET CENTERLINE STATIONING FROM BEAUMONT MDP LINE 6, STAGE 59 RECHARGE BASIN FEED/PLANS.
- ALL PIPELINE STATIONING ALONG CENTERLINE OF PIPE, UNLESS OTHERWISE NOTED.

NOTE:
WORK CONTAINED WITHIN THESE PLANS SHALL NOT COMMENCE UNTIL AN ENCROACHMENT PERMIT HAS BEEN ISSUED.

BENCHMARK: NAVD88 DATUM
2-17359
FD 1/2" IR W/ BCFS TS CAP
PL
SI 2816.75

18 hours BEFORE excavation
1-(800)227-2600
CALL Underground Service Alert

BEAUMONT-CHERRY VALLEY WATER DISTRICT
ENGINEERING
09-23-2021
PWT:GK

DEVIATIONS DATE BY



BEAUMONT-CHERRY VALLEY WATER DISTRICT

560 Magnolia Ave., Beaumont, CA, 92223 • 951-845-1581

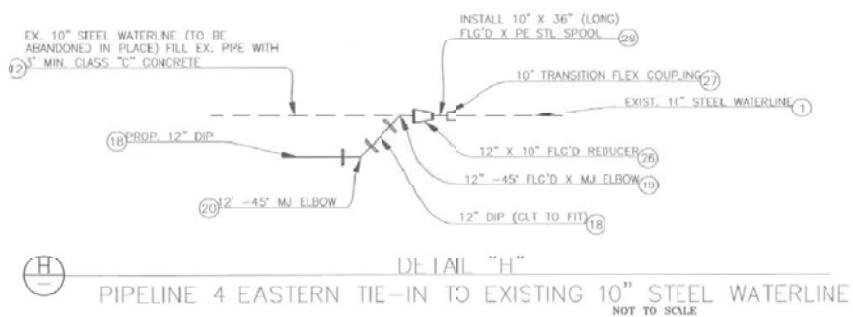
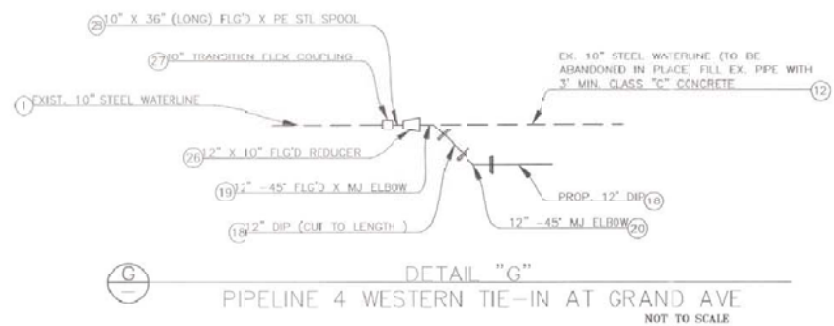
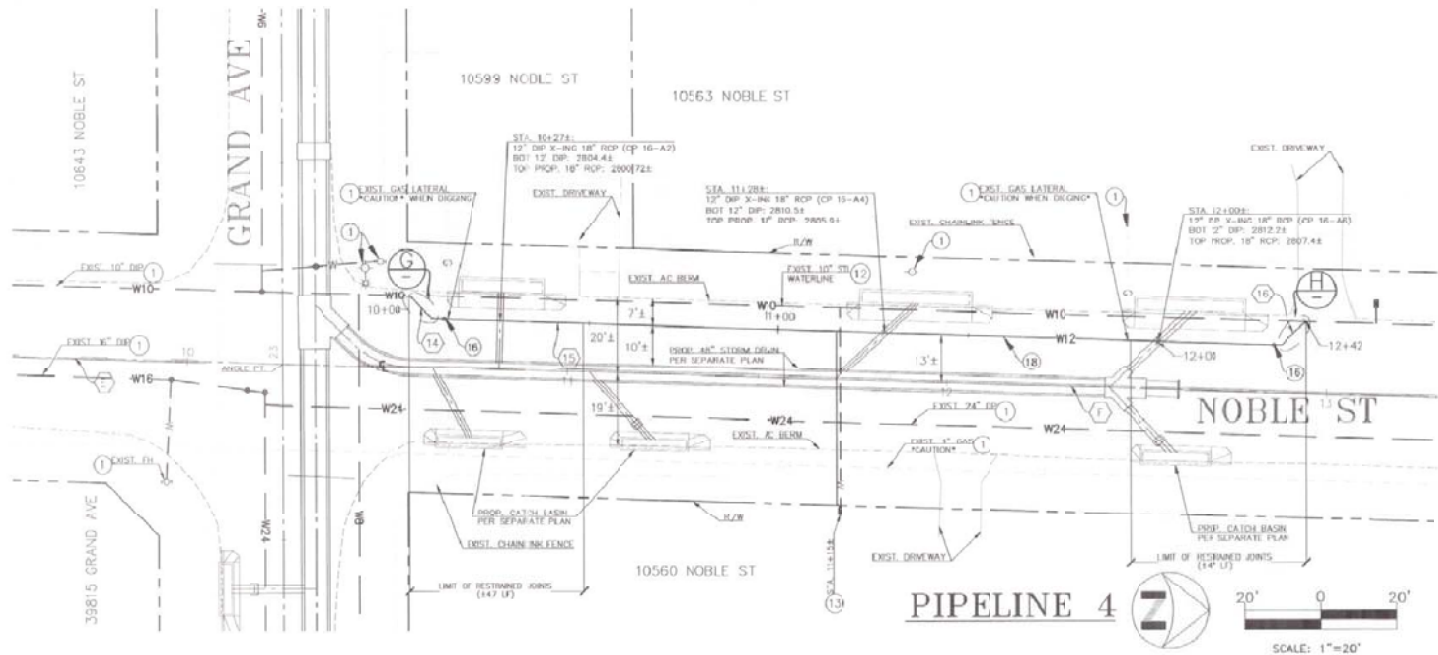
APPROVED BY
REGISTERED ENGINEER No. 74332 DATE 7/27/24

SCALE AS NOTED
FIELD BOOK N/A
DESIGN DAB
DRAWN DAB
CHECKED MBS

BCVWD
PIPELINE RELOCATION PLAN
PIPELINE 2: STA.: 10+00 - STA.: 11+81±
(GRAND AVE STA.: 4947± - STA.: 51+24±)
PIPELINE 3: STA.: 10+00 - STA.: 12+37±
(GRAND AVE STA.: 62+02± - STA.: 64+01±)

PZ 3040

SHEET
3
OF 3 SHEETS
170 W
FILE NO.



LINE/CURVE DATA TABLE			
	BEARING/DELTA	RADIUS	LENGTH(±) (LF)
(14)	N 46°46' E 1°E	-	9
(15)	N 01°48'56" E	-	166
(16)	N 43°13'50" W	-	6

NOBLE STREET CENTERLINE DATA TABLE			
	BEARING/DELTA	RADIUS	LENGTH(±) (LF)
(E)	N 01°46'30" E	-	71
(F)	N 01°45'26" E	-	305

NOTE:
WORK CONTAINED WITHIN THESE PLANS SHALL NOT COMMENCE UNTIL AN ENCROACHMENT PERMIT HAS BEEN ISSUED.

48 hours BEFORE excavation
1-(800)227-2600
CALL Underground Service Alert

BENCHMARK: NAVD83 DATUM
2-17350
FD 1/2" IR W/ RCP TS CAP
FL
CL: 28' 6.7"
BEAUMONT-CHERRY VALLEY WATER DISTRICT
09-23-2021



BEAUMONT-CHERRY VALLEY WATER DISTRICT

560 Magnolia Ave. • Beaumont, CA 92223 • 951-845-9581

APPROVED BY: *[Signature]* DATE: 7/2/21
REGISTERED ENGINEER No. 72332

SCALE: AS NOTED
FIELD BOOK: N/A
DESIGN: DAB
DRAWN: DAB
CHECKED: MDS

BCVWD
PIPELINE RELOCATION PLAN
PIPELINE 4: STA.: 10+00 - STA.: 12+42±
(NOBLE ST STA.: 10+58± - STA.: 12+95±)
PLATE 6-1

PZ 3040

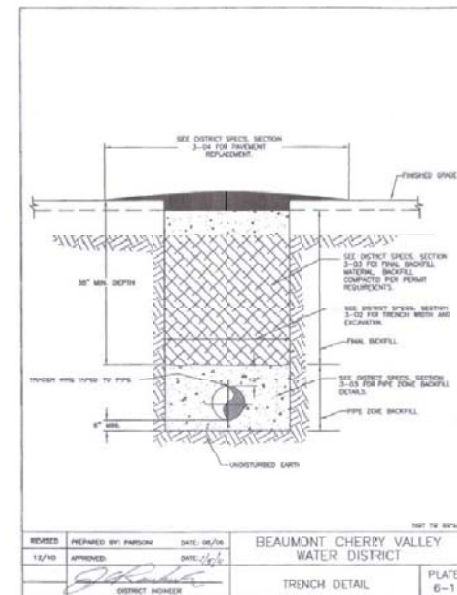
SHEET
4
OF 5 SHEETS
970W
FILE NO.

CONSTRUCTION NOTES

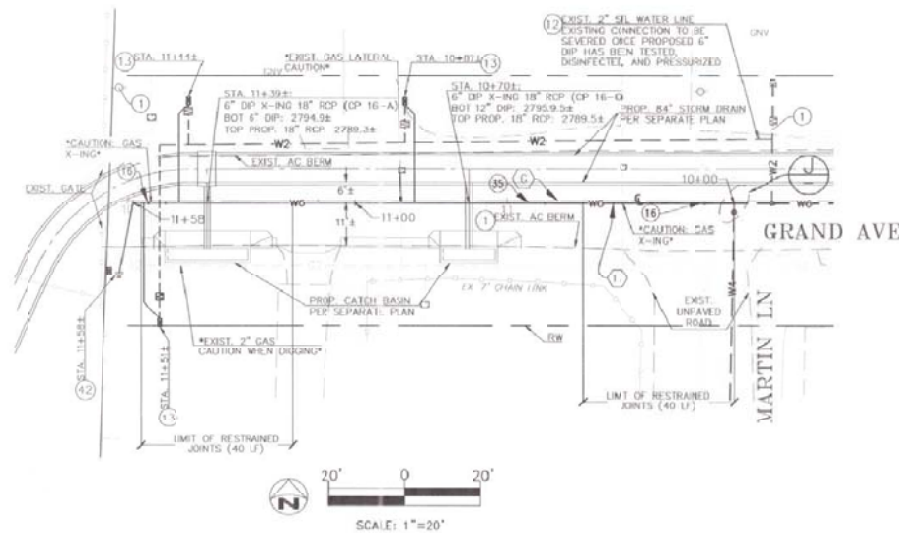
- PROTECT IN PLACE
- DISINFECT ALL POTABLE WATER SERVICE PIPING AND APPURTENANCES (PER AWWA STANDARD)
- ABANDON IN PLACE EXISTING PIPELINE AND PLUG SEVERED PPE ENDS WITH 3" MINIMUM CLASS "C" CONCRETE PLUG
- INSTALL DISTRICT FURNISHED 1" SERVICE SADDLE, CORPORATION STOP, AND SERVICE LATERAL PIPING PER BCVWD STANDARD PLATE 6-3. ONCE TESTING AND DISINFECTION IS COMPLETE, REMOVE EXISTING METER AND INSTALL NEW DISTRICT FURNISHED METER AND CONNECT TO NEW SERVICE LATERAL.
- INSTALL RESTRAINED JOINTS (FIELD-LOK 350 GASKETS, MGL LUGS (P MECHANICAL JOINT) OR DISTRICT APPROVED EQUAL)
- INSTALL 2" RISER AND TEST PLATE FOR DISINFECTION AND TESTING. REMOVE TEST PLATE AT END OF CHLORINATION AND TESTING PROCESS. REMOVE RISER AND PLUG TEST LOCATION.
- INSTALL 12" DIP (CLASS 350) WITH POLYETHYLENE ENCASEMENT AND BEDDING PER BCVWD PLATE 6-1 (36" MIN COVER)
- INSTALL 12" - 45° FLG'D X MJ ELBOW, WITH EBAA IRON SERIES 1100 RESTRAINT
- INSTALL 12" - 45° MJ ELBOW, WITH EBAA IRON SERIES 1100 RESTRAINT
- INSTALL 12" X 10" FLG'D REDUCER
- INSTALL 10" TRANSITION FLEX COUPLING FROM 10.89" - 11.40" (ROMAC LONG BARRE.) AND TIES PER BCVWD PLATE 9.
- INSTALL 10" X 36" (LONG) FLG'D X PE STL SPOOL

GENERAL CONSTRUCTION & NOTES

- ALL PIPELINES SHALL BE FULLY RESTRAINED WITH RESTRAINED JOINT GASKETS PER BCVWD STANDARD SPECIFICATIONS.
- INSTALL CLASS B AGGREGATE BASE (FURNISHED BY DISTRICT FROM TOP OF PIPE ZONE TO GROUND SURFACE) ALONG ALL NEW AND EXISTING PIPELINE TRENCHES PER BCVWD PLATE 6-1 AND 6-2, OR AS APPROVED BY THE COUNTY OF RIVERSIDE IN LOCATIONS WHERE NATIVE MATERIAL IS NOT SUITABLE FOR PROPER BACKFILL AND COMPACTION.
- DISINFECT ALL POTABLE WATER SERVICE PIPING AND APPURTENANCES (PER AWWA STANDARD)
- ALL STREET CENTERLINE STATIONING FROM BEAUMONT MDP (LINE 16, STAGE 50 RECHARGE BASIN) REFER PLANS.
- ALL PIPELINE STATIONING ALONG CENTERLINE OF PIPE, UNLESS OTHERWISE NOTED.



REDA COUNTY OVERSIGHT ENGINEER REGISTRATION # DATE SIGNED
76450 9/28/21
APPROVED AS TO COMPLIANCE WITH APPLICABLE COUNTY STANDARDS AND PRACTICES TRANSPORTATION DEPARTMENT ON: 7 - ROW/OFFSITE



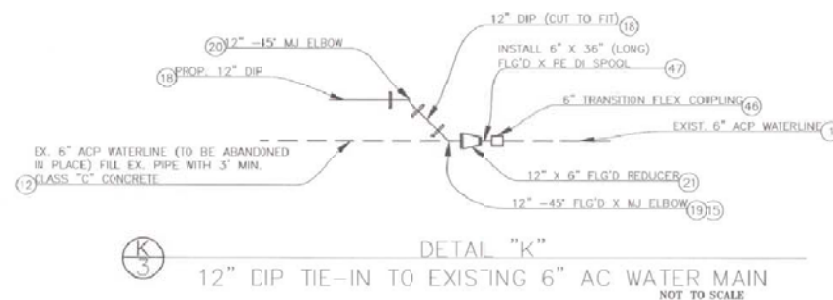
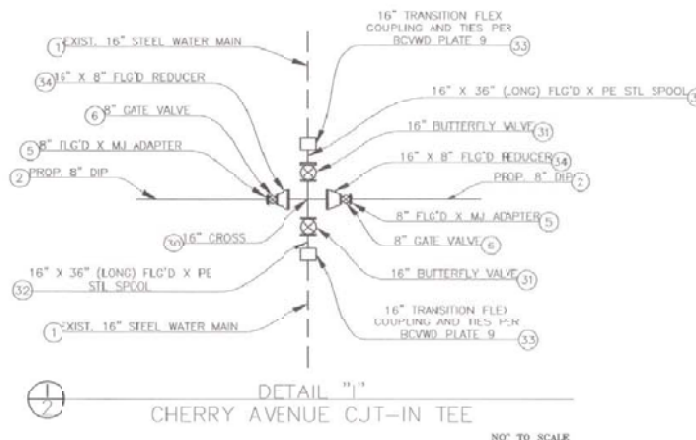
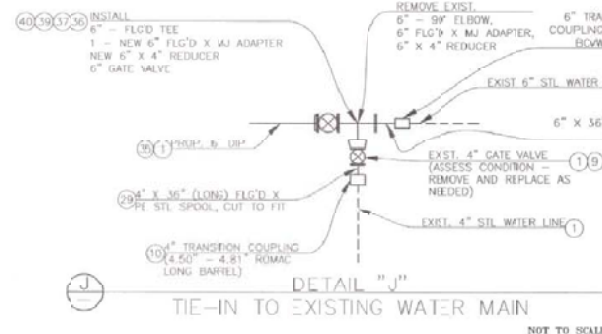
LINE/CURVE DATA TABLE			
BEARING/DELTA	RADIUS	LENGTH(±) (LF)	
(17) N 90°00'00" E	—	158	
GRAND AVENUE CENTERLINE DATA TABLE			
(18) N 90°00'00" E	—	186	

GENERAL CONSTRUCTION & NOTES

1. ALL PIPELINES SHALL BE FULLY RESTRAINED WITH RESTRAINED JOINT GASKETS PER BCVWD STANDARD SPECIFICATIONS.
2. INSTALL CLASS II AGGREGATE BASE (FURNISHED BY DISTRICT) FROM TOP OF PIPE ZONE TO GROUND SURFACE ALONG ALL NEW AND EXISTING PIPELINE TRENCHES PER BCVWD PLATE 6-1 AND 6-2, OR AS APPROVED BY THE COUNTY OF RIVERSIDE IN LOCATIONS WHERE NATIVE MATERIAL IS NOT SUITABLE FOR PROPER BACKFILL AND COMPACTION.
3. DISINFECT ALL POTABLE WATER SERVICE PIPING AND APPURTENANCES (PER AWWA STANDARD).
4. ALL STREET CENTERLINE STATIONING FROM BEAUMONT MDP LINE 16, STAGE 50 RECHARGE BASIN FEEDER PLANS.
5. ALL PIPELINE STATIONING ALONG CENTERLINE OF PIPE, UNLESS OTHERWISE NOTED.

CONSTRUCTION NOTES

- (1) PROTECT IN PLACE.
- (2) INSTALL 8" DIP (CLASS 300) WITH POLYETHYLENE ENCASUREMENT AND BEDDING PER BCVWD PLATE 6-1 (36" MIN COVER).
- (3) INSTALL 8" FLGD X MJ ADAPTER.
- (4) INSTALL 6" GATE VALVE.
- (5) INSTALL 4" GATE VALVE FOR BCVWD PLATE 2.
- (6) INSTALL 4" TRANSITION FLEX COUPLING FROM 4.50' - 4.81' (ROMAC LONG BARREL).
- (7) DISINFECT ALL POTABLE WATER SERVICE PIPING AND APPURTENANCES (PER AWWA STANDARD).
- (8) ABANDON IN PLACE EXISTING PIPELINE AND PLUG SERVED PIPE ENDS WITH 3" MINIMUM CLASS "C" CONCRETE PLUG (EACH END).
- (9) INSTALL DISTRICT FURNISHED 1" SERVICE SADDLE, CORPORATION STOP, AND SERVICE LATERAL PIPING PER BCVWD STANDARD PLATE 6-3. ONCE TESTING AND DISINFECTION IS COMPLETE, REMOVE EXISTING METER AND INSTALL NEW DISTRICT FURNISHED METER, AND CONNECT TO NEW SERVICE LATERAL.
- (10) INSTALL RESTRAINED JOINTS (FIELD-LOK 350 GASKETS, MEGA LICs (IF MECHANICAL JOINT) OR DISTRICT APPROVED EQUAL).
- (11) INSTALL THRUST BLOCK PER BCVWD PLATE 11-1 AND 11-2 (ASSUME SOIL BEARING PRESSURE OF 1500 LB/SF).
- (12) INSTALL 2" RISER AND TEST PLATE FOR DISINFECTION AND TESTING. REMOVE TEST PLATE AT END OF CHLORINATION AND TESTING PROCESS. REMOVE RISER AND PLUG TEST LOCATION.
- (13) INSTALL 6" TRANSITION FLEX COUPLING FROM 6.60' - 6.91' (ROMAC LONG BARREL) AND TIES PER BCVWD PLATE 9.
- (14) INSTALL 6" X 36" (LONG) FLGD X PE STL SPOOL.
- (15) INSTALL 4" X 36" (LENGTH) FLGD X PE STL SPOOL (CUT TO FIT).
- (16) INSTALL 16" DI. FLGD CROSS.
- (17) INSTALL 16" BUTTERFLY VALVE.
- (18) INSTALL 16" X 36" (LONG) FLGD X PE STL SPOOL.
- (19) INSTALL 16" TRANSITION COUPLING AND TIES PER BCVWD PLATE 9. (ROMAC LONG BARREL, 16.00' - 16.40' GASKET).
- (20) INSTALL 16" X 8" FLGD REDUCER.
- (21) INSTALL 6" DIP (CLASS 300) WITH POLYETHYLENE ENCASUREMENT AND BEDDING PER BCVWD PLATE 6-1 (36" MIN. COVER).
- (22) INSTALL 6" - FLGD TEE.
- (23) INSTALL 6" X 4" FLGD ECCENTRIC REDUCER.
- (24) INSTALL 6" GATE VALVE FOR BCVWD PLATE 2.
- (25) INSTALL 6" FLGD X MJ ADAPTER.
- (26) INSTALL 4" BLOWOFF ASSEMBLY PER BCVWD PLATE 3-1.
- (27) INSTALL 6" TRANSITION FLEX COUPLING FROM 6.60' - 6.91' x 7.15' - 7.35' (ROMAC LONG BARREL).
- (28) INSTALL 6" X 36" (LONG) FLGD X PE DI SPOOL.



NOTE:
WORK CONTAINED WITHIN THESE PLANS SHALL NOT COMMENCE UNTIL AN ENCROACHMENT PERMIT HAS BEEN ISSUED.

48 hours BEFORE excavation
1-(800)227-2603
CALL Underground Service Alert

BENCHMARK: NAVD88 DATUM
E=17320
PD 1/2" IR W/ R/C TS CAP
FL
EL. 2816.72
BEAUMONT-CHERRY VALLEY WATER DISTRICT
09-23-2021
SYM



BEAUMONT-CHERRY VALLEY WATER DISTRICT

500 Magnolia Ave. • Beaumont, CA. 92223 • 951-845-9581

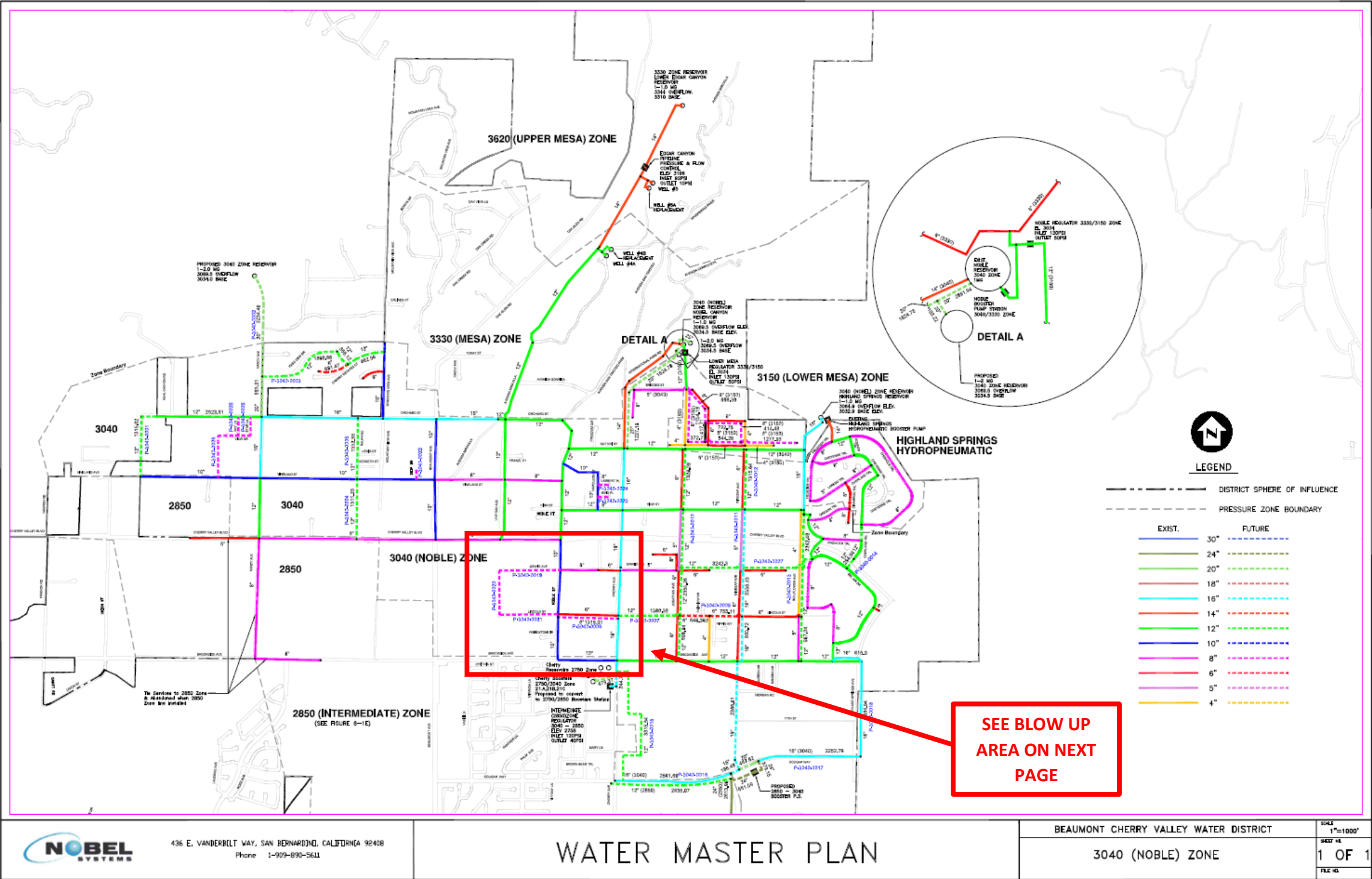
APPROVED BY: [Signature]
REGISTERED ENGINEER No. 78226 DATE 7/27/21

SCALE: AS NOTED
FIELD BOOK: N/A
DESIGN: DAB
DRAWN: DAB
CHECKED: MBS

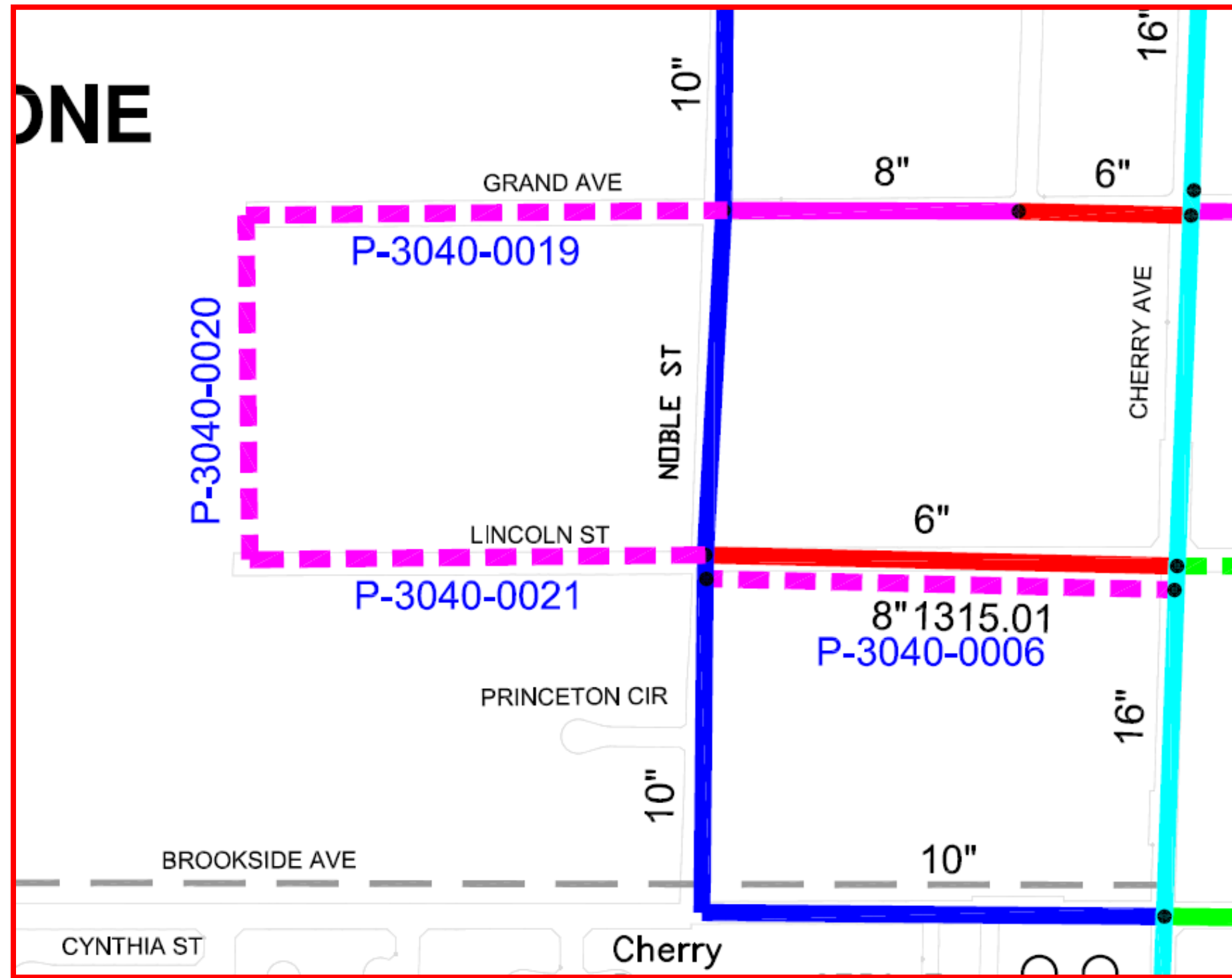
BCVWD
PIPELINE RELOCATION PLAN
CHERRY AVENUE CUT-IN TEE DETAIL
AND GRAND AVENUE - WEST OF
MARTIN LANE

PZ 3040
SHEET
5
OF 5 SHEETS
970 W
FILE NO

ATTACHMENT 3
BCVWD 2016 MASTERPLAN MAP OF 3040 PRESSURE ZONE



ATTACHMENT 3:
BLOWUP OF BCVWD 2016 MASTERPLAN MAP OF 3040 PRESSURE ZONE AT P-3040-0019 LOCATION



ATTACHMENT 4

BCVWD 2017 CAPITAL IMPROVEMENT PLAN – POTABLE WATER – 2017-2026 APPENDIX B

BEAUMONT-CHERRY VALLEY WATER DISTRICT CAPITAL IMPROVEMENT PROGRAM - POTABLE WATER-2017-2026 APPENDIX B

APPENDIX B																								
Item	Tier		FUNDING SOURCE				Total Project Cost 2014 Dollars	Total Project Cost 2016 Dollars	2017	2018	2019	2020	2021	2022	2023	2024	2025	2026	ADJUSTED COST BY FUNDING SOURCE					
			Facilities Fee	Cap. Repl. Res.	Developer	Other													Facilities Fee	Cap. Repl. Res.	Developer	Other	Total Adjusted Cost	
Inflation Factor								1.03816	1.0571	1.0804	1.1175	1.1460	1.1813	1.2148	1.2469	1.2834	1.3201							
Domestic Water Project No.		Description																						
P-2750-0069	PR	Egan Ave.-California Ave. Alley, 5th to 7th	0%	100%	0%	0%	\$200,300	\$211,423	217,376										\$0	\$217,376	\$0	\$0	\$217,376	
P-3620-0012	PR	Ave Altejo Bella, Ave Miravilla to end of cul-de-sac	0%	100%	0%	0%	\$257,700	\$272,010	279,670										\$0	\$279,670	\$0	\$0	\$279,670	
P-3620-0015	PR	Appletree Ln, B line to Oak Glen Rd	0%	100%	0%	0%	\$625,300	\$660,023	678,609										\$0	\$678,609	\$0	\$0	\$678,609	
P-3040-0013	PR	Bellflower Ave, Brookside St. to High St.	0%	100%	0%	0%	\$804,100	\$848,752		897,226									\$0	\$897,226	\$0	\$0	\$897,226	
P-3040-0026	PR	Utica Way, Vineland St. to View Dr.	0%	100%	0%	0%	\$151,100	\$159,491		168,600									\$0	\$168,600	\$0	\$0	\$168,600	
P-3040-0022	PR	Friendship Dr., Vineland St. to end	0%	100%	0%	0%	\$104,900	\$110,725			120,345								\$0	\$120,345	\$0	\$0	\$120,345	
P-3040-0019	PR	Grand Ave., Noble St. to Martin St.	0%	100%	0%	0%	\$246,400	\$260,083			282,679								\$0	\$282,679	\$0	\$0	\$282,679	
P-3040-0021	PR	Lincoln St., Noble St. to West end	0%	100%	0%	0%	\$284,200	\$299,982			326,044								\$0	\$326,044	\$0	\$0	\$326,044	
P-3040-0025	PR	Star Lane, Ave Miravilla to end of cul-de-sac	0%	100%	0%	0%	\$326,200	\$344,314			374,228								\$0	\$374,228	\$0	\$0	\$374,228	
P-3040-0023	PR	Bling Pl., Napoleon	0%	100%	0%	0%	\$85,300	\$90,037				100,615							\$0	\$100,615	\$0	\$0	\$100,615	
P-3040-0024	PR	Lambert Pl.	0%	100%	0%	0%	\$85,300	\$90,037				100,615							\$0	\$100,615	\$0	\$0	\$100,615	
P-3620-0002	PR	"A" Line Upper Edgar to split at Apple Tree Lane Tract	0%	100%	0%	0%	\$1,795,900	\$1,895,626				847,336	1,306,795						\$0	\$2,154,131	\$0	\$0	\$2,154,131	
P-2750-0064	PR	Antonelli Court, Pennsylvania Ave. to Cherry Ave.	0%	100%	0%	0%	\$132,900	\$140,280						165,714					\$0	\$165,714	\$0	\$0	\$165,714	
P-3330-0006	PR	Bogart Fire Service	0%	100%	0%	0%	\$169,000	\$178,385						210,728					\$0	\$210,728	\$0	\$0	\$210,728	
P-2750-0068	PR	Elm St., 6th to 7th	0%	100%	0%	0%	\$86,300	\$91,092						107,608					\$0	\$107,608	\$0	\$0	\$107,608	
P-3620-0009	PR	Ave. Miravilla, end of 12-in to Whispering Pines	0%	100%	0%	0%	\$303,900	\$320,776						378,936					\$0	\$378,936	\$0	\$0	\$378,936	
P-3040-0011	PR	Winesap Ave., Brookside Ave. to Hogg Street	0%	100%	0%	0%	\$1,107,600	\$1,169,105							1,419,968				\$0	\$1,419,968	\$0	\$0	\$1,419,968	
P-UEC-0001	PR	Edgar Canyon Pipeline Well 14 to Wedding Chapel	0%	100%	0%	0%	\$787,100	\$830,808								1,037,495			\$0	\$1,037,495	\$0	\$0	\$1,037,495	
P-UEC-0002	PR	Edgar Canyon Pipeline, Wedding Chapel to Upper Edgar	0%	100%	0%	0%	\$1,614,400	\$1,704,048									1,093,952	1,124,757	\$0	\$2,218,709	\$0	\$0	\$2,218,709	
TOTAL POTABLE PIPELINE REPLACEMENT PROJECTS							\$7,280,500	\$7,684,786	\$1,175,655	\$1,045,826	\$1,103,297	\$1,048,566	\$1,306,795	\$862,986	\$1,419,968	\$1,037,495	\$1,093,952	\$1,124,757	\$0	\$11,239,296	\$0	\$0	\$11,239,296	
									\$13,600,780	\$5,669,083	\$12,737,661	\$8,665,643	\$5,931,016	\$7,701,267	\$5,065,562	\$7,842,856	\$13,351,129	\$12,776,097	\$59,052,136	\$34,288,958	\$0	\$0	\$93,341,094	
							Total Adjusted Project Cost:											\$93,341,094						
									2017	2018	2019	2020	2021	2022	2023	2024	2025	2026						
Facilities Fee									\$9,608,903	\$4,038,758	\$9,575,245	\$6,564,453	\$4,624,220	\$4,673,389	\$453,115	\$4,010,254	\$7,984,776	\$7,519,021	\$59,052,136					
Cap. Repl. Res.									\$3,991,877	\$1,630,324	\$3,162,416	\$2,101,190	\$1,306,795	\$3,027,878	\$4,612,447	\$3,832,602	\$5,366,353	\$5,257,076		\$34,288,958				
Developer									\$0	\$0	\$0	\$0	\$0	\$0	\$0	\$0	\$0	\$0	\$0	\$0		\$0		
Other									\$0	\$0	\$0	\$0	\$0	\$0	\$0	\$0	\$0	\$0	\$0	\$0			\$0	
									\$13,600,780	\$5,669,083	\$12,737,661	\$8,665,643	\$5,931,016	\$7,701,267	\$5,065,562	\$7,842,856	\$13,351,129	\$12,776,097	\$93,341,094					