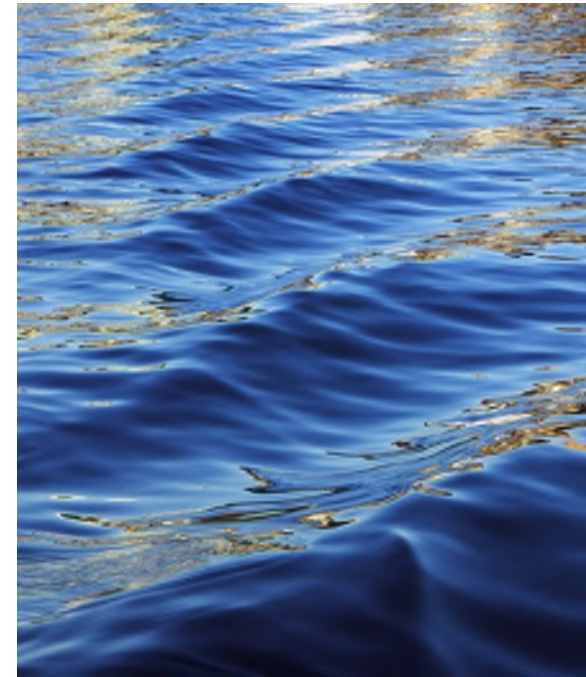


MDP Line 16 Construction Update

Joint Storm Water Capture / Flood Control Project

October 27, 2022



Beaumont-Cherry Valley Water District

Proudly Serving the City of Beaumont and Community of Cherry Valley for Over 100 Years

MDP Line 16 – Master Drainage Plan Line 16

PROJECT OBJECTIVE/SUMMARY

- STORM WATER CONVEYANCE FACILITY TO PROMOTE WATER CONSERVATION AND GROUNDWATER RECHARGE
- JOINT PROJECT BETWEEN RIVERSIDE COUNTY FLOOD CONTROL & WATER CONSERVATION DISTRICT (FLOOD CONTROL) AND BCVWD
- CONVEYANCE MECHANISM IS A NEW STORM DRAIN (24” – 84” DIAMETER) WITH CATCH BASINS
 - APPROXIMATELY 6,600 LF OF STORM DRAIN
- GROUNDWATER RECHARGE MECHANISM IS BCVWD’S NOBLE CREEK RECHARGE FACILITY – PHASE II (NCRF PH II)
- 10-YEAR STORM DRAIN FACILITY TO CONVEY LOCAL RUNOFF TO BCVWD NCRF PH II
- ALIGNMENT LOCATED WITHIN GRAND AVENUE (CHERRY VALLEY) FROM BELLFLOWER TO BCVWD NCRF PH II
- HELP OFFSET DEPENDENCY ON IMPORTED WATER FOR THE RATEPAYERS WITHIN BCVWD
 - PROJECT MAY CAPTURE UP TO 500 ACRE-FEET/YEAR (AFY)
- IMPROVE WATER QUALITY WITHIN THE LINE 16 WATERSHED

MDP Line 16 – Master Drainage Plan Line 16

PROJECT CONSTRUCTION STATUS

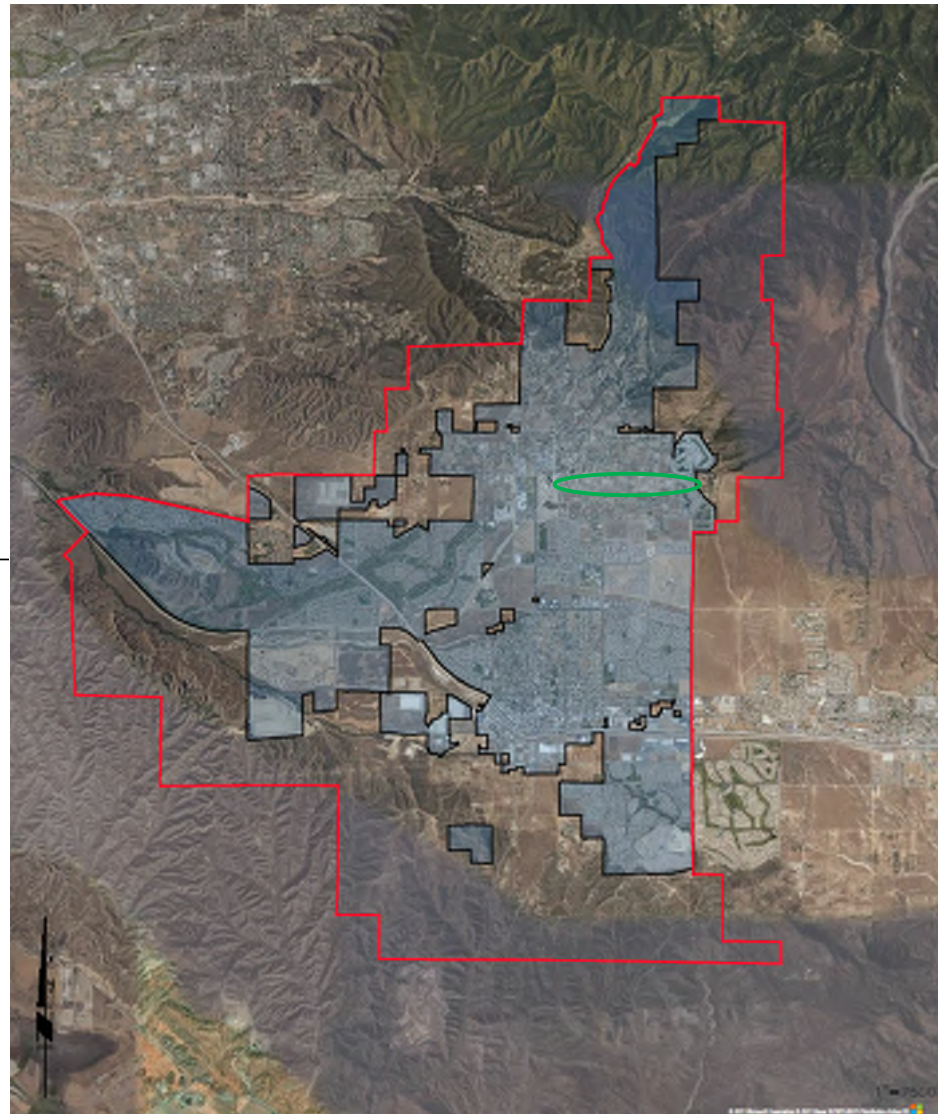
CONSTRUCTION TASKS UNDERWAY:

- CONSTRUCTION OF STORM DRAIN OUTLET STRUCTURE AT BCVWD NOBLE CREEK RECHARGE FACILITIES, PHASE II (NCRF PHASE II)
- CONSTRUCTION OF OUTLET STRUCTURE FROM NCRF PHASE II, POND 1 TO NOBLE CREEK CHANNEL
- CONSTRUCTION OF EMERGENCY OUTLET STRUCTURE FROM PHASE II, POND 1 TO NOBLE CREEK CHANNEL
- CONSTRUCTION OF CATCH BASINS ALONG GRAND AVENUE, WEST OF WINESAP AVENUE
- CONSTRUCTION OF DROP INLETS/FEEDER LINE WITHIN JONATHAN AVENUE
- PAVEMENT REPAIR ALONG PORTIONS OF GRAND AVENUE, NOBLE STREET, CHERRY AVENUE, AND JONATHAN AVENUE
- STORM DRAIN CONSTRUCTED TO THE EAST SIDE OF WINESAP AVENUE

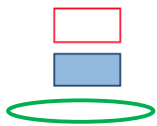
**BEAUMONT CHERRY VALLEY
WATER DISTRICT**

**SERVICE BOUNDARY AND SPHERE OF
INFLUENCE**

MDP LINE 16 PROJECT VICINITY

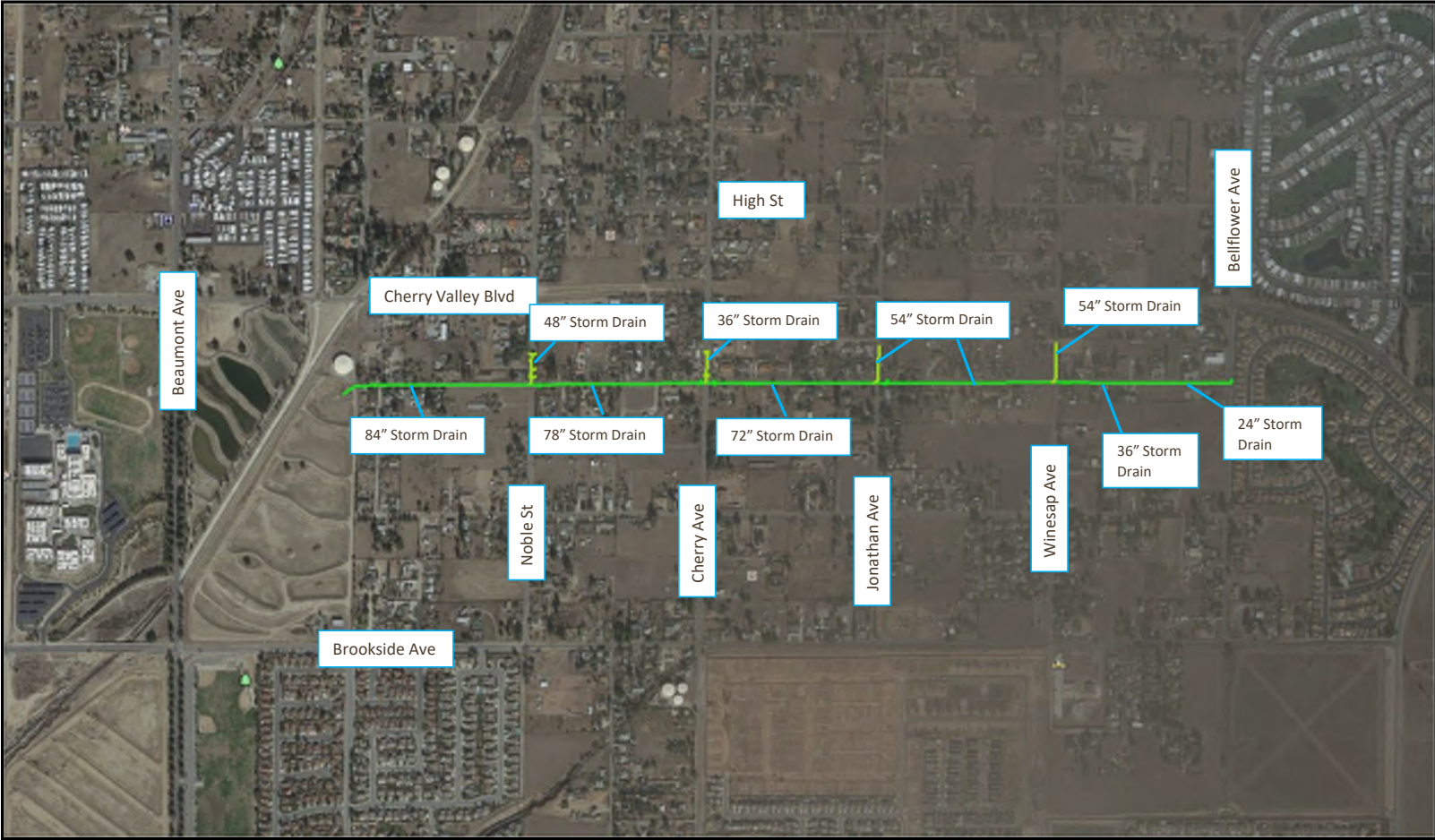


SPHERE OF INFLUENCE
SERVICE BOUNDARY
LOCATION OF PROJECT



MDP Line 16 – Master Drainage Plan Line 16

PROJECT LOCATION



Noble Creek Recharge Facility – Phase II



Noble Creek Recharge Facility – Phase II Pond 1 Outlet to Noble Creek



Noble Creek Recharge Facility – Phase II 84” Inlet Structure to Pond 1



Noble Creek Recharge Facility – Phase II 84” Inlet Structure to Pond 1



Noble Creek Recharge Facility – Phase II Pond 4 Emergency Outlet to Noble Creek



*Images Captured
September 2022

Noble Creek Recharge Facility – Phase II Pond 4 Emergency Outlet to Noble Creek



*Images Captured
October 2022

MDP Line 16 – Under Construction – Noble Street Pavement Repair



MDP Line 16 – Under Construction – Cherry Avenue Pavement Repair



MDP Line 16 – Under Construction – Jonathan Avenue Drop Inlets



MDP Line 16 – Under Construction – Winesap Avenue Material Staging



*Photos from 10/12/2022

MDP Line 16 – Under Construction – Winesap Avenue Storm Drain Construction



Questions

