



Beaumont-Cherry Valley Water District

Serving the Beaumont, Cherry Valley and some areas of Calimesa

ITEM 13

REVIEW OF CALIFORNIA DROUGH CONTITIONS

Presentation to
Board of Directors
January 11, 2023
Board Meeting



Summary of Discussion Topics

1. California Drought Conditions
2. Recent, Current, and Upcoming Rain and Snow Events
3. Reservoir, Precipitation, and Snowpack Levels
4. Action of Various Agencies to Maximize Opportunities
5. Possible Outcomes on California Water Supply and Affects on BCVWD and SGPWA

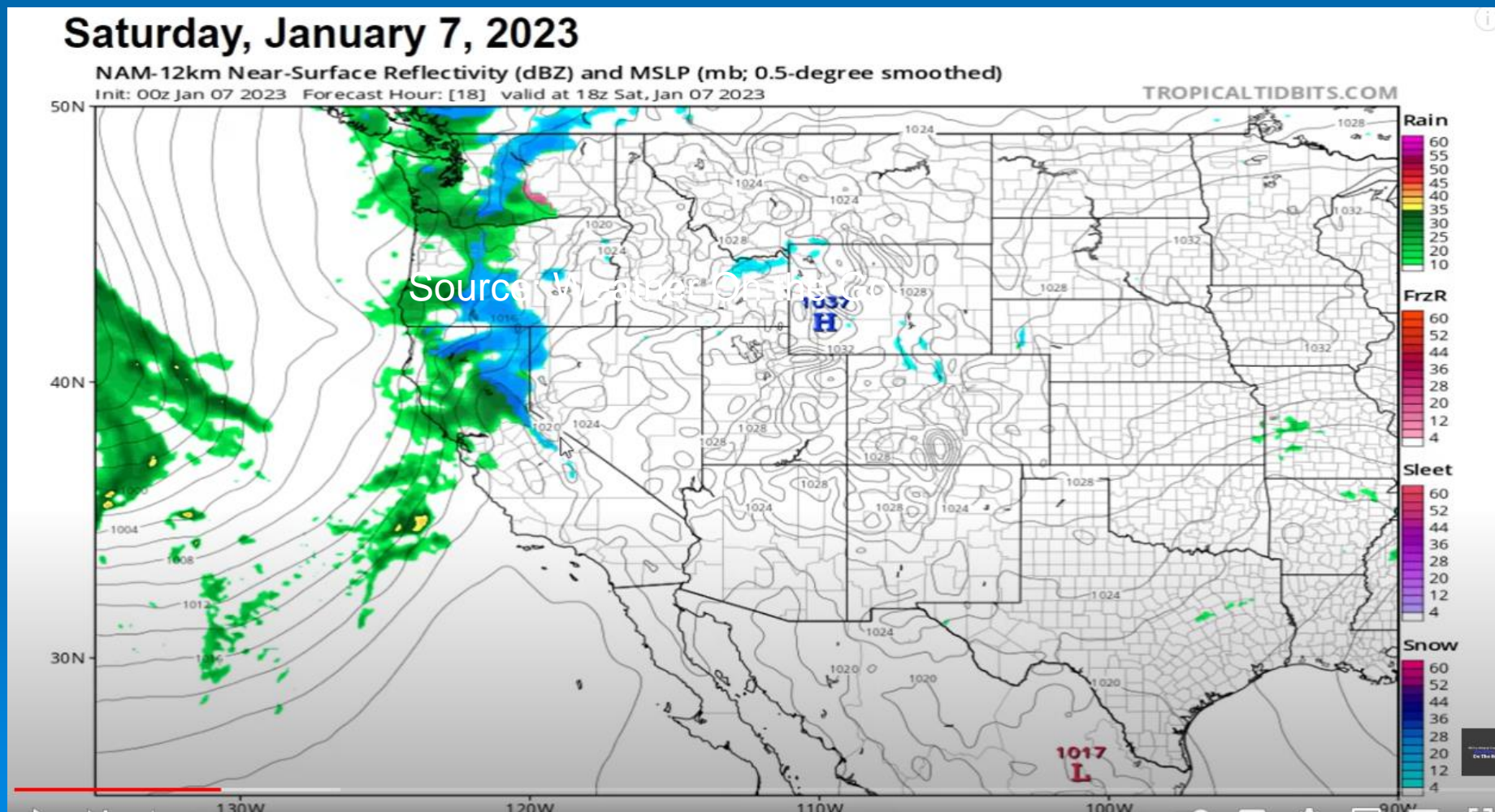


Items that Affect State Water Project Water Supplies

1. Recent, Current, and Future (to April 1) Rainfall, Snow, and Snowpack in California
2. California Reservoir Condition and Levels
3. California Precipitation
4. California Northern, Central, and Southern Sierra Snow Pack
5. Action of Various Agencies to Maximize Opportunities
6. Colorado River and Lake Meade and Lake Powell Levels and General Basin Health
7. Possible Outcomes on California Water Supply and Affects on BCVWD

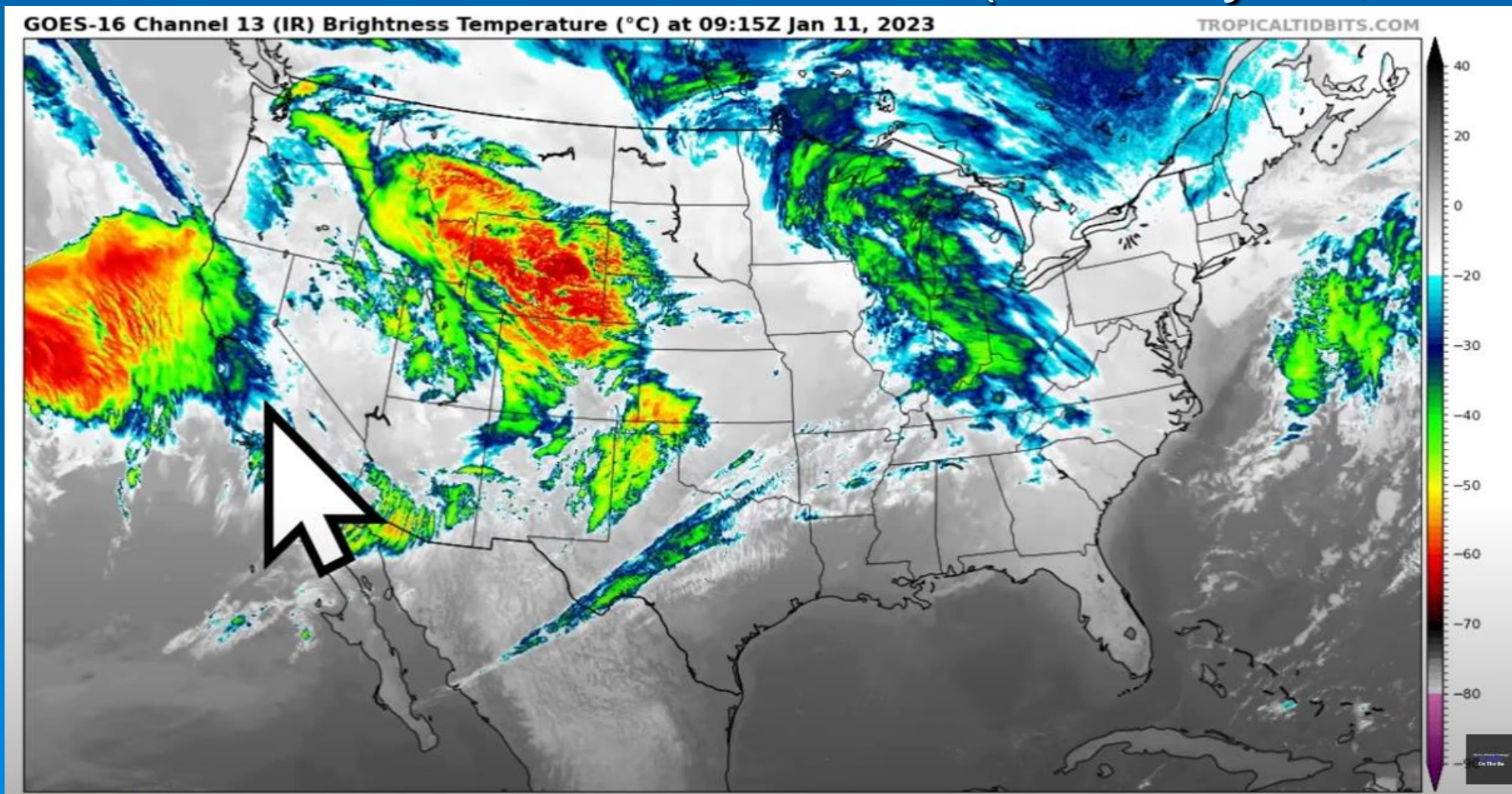


Recent Rainfall, Snow, and Snowpack in California (January 7, 2023)



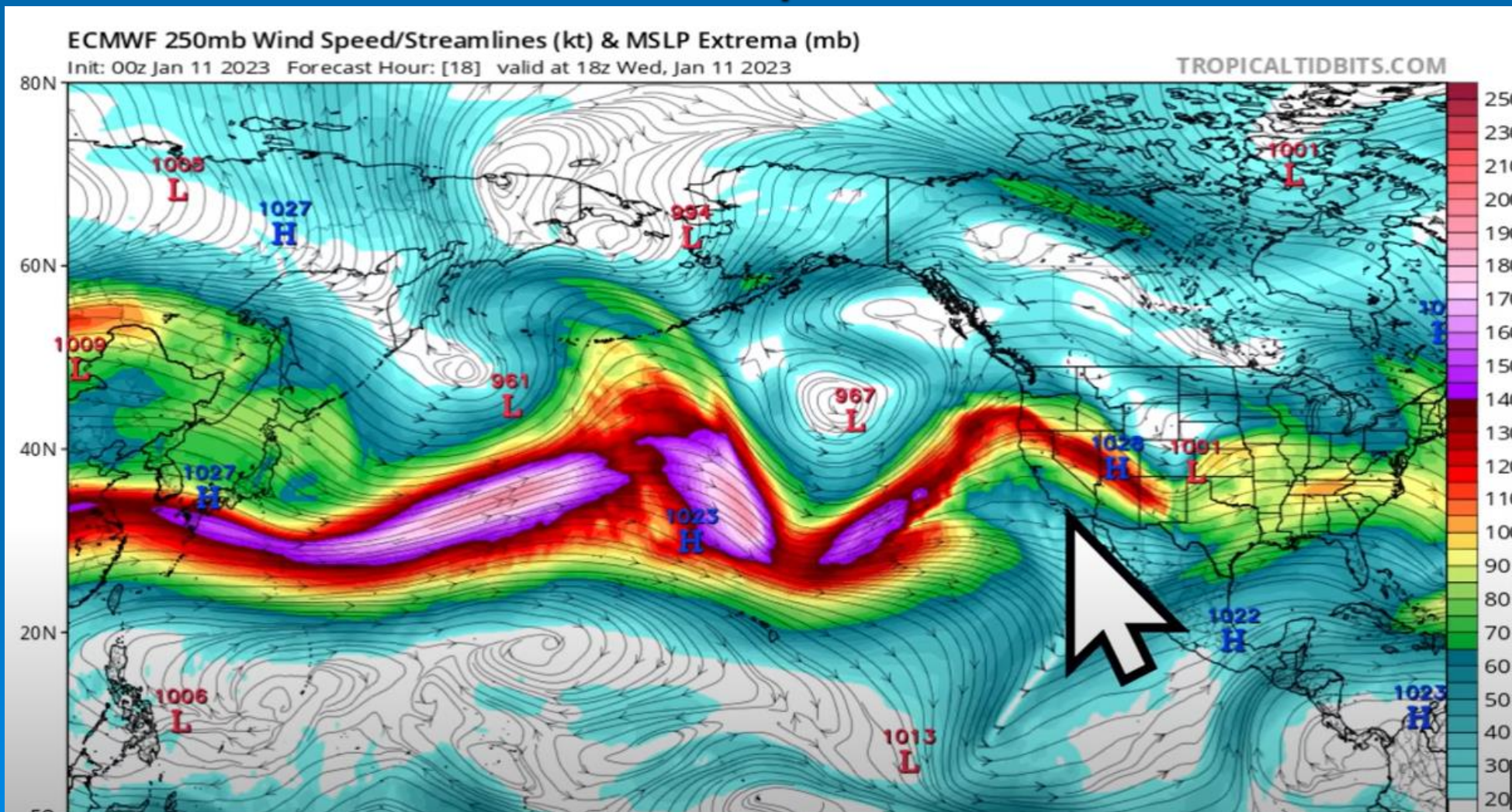


Current Rainfall, Snow, and Snowpack in Northern California (January 11, 2023)





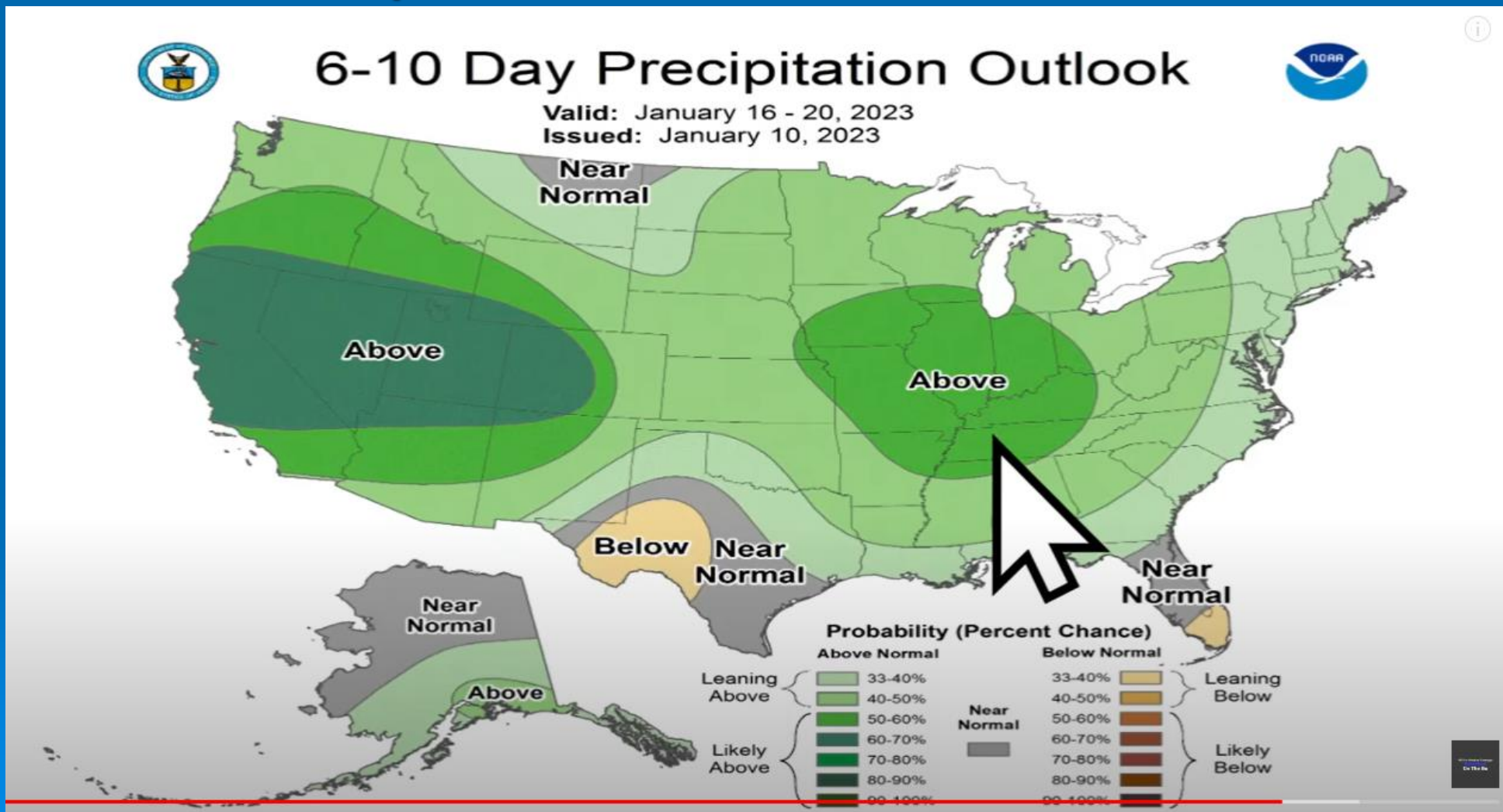
Upcoming Anticipated Rainfall, Snow, and Snowpack in California



Source: Weather
On the Go



Upcoming Anticipated Rainfall, Snow, and Snowpack in California 1/16-20/2023



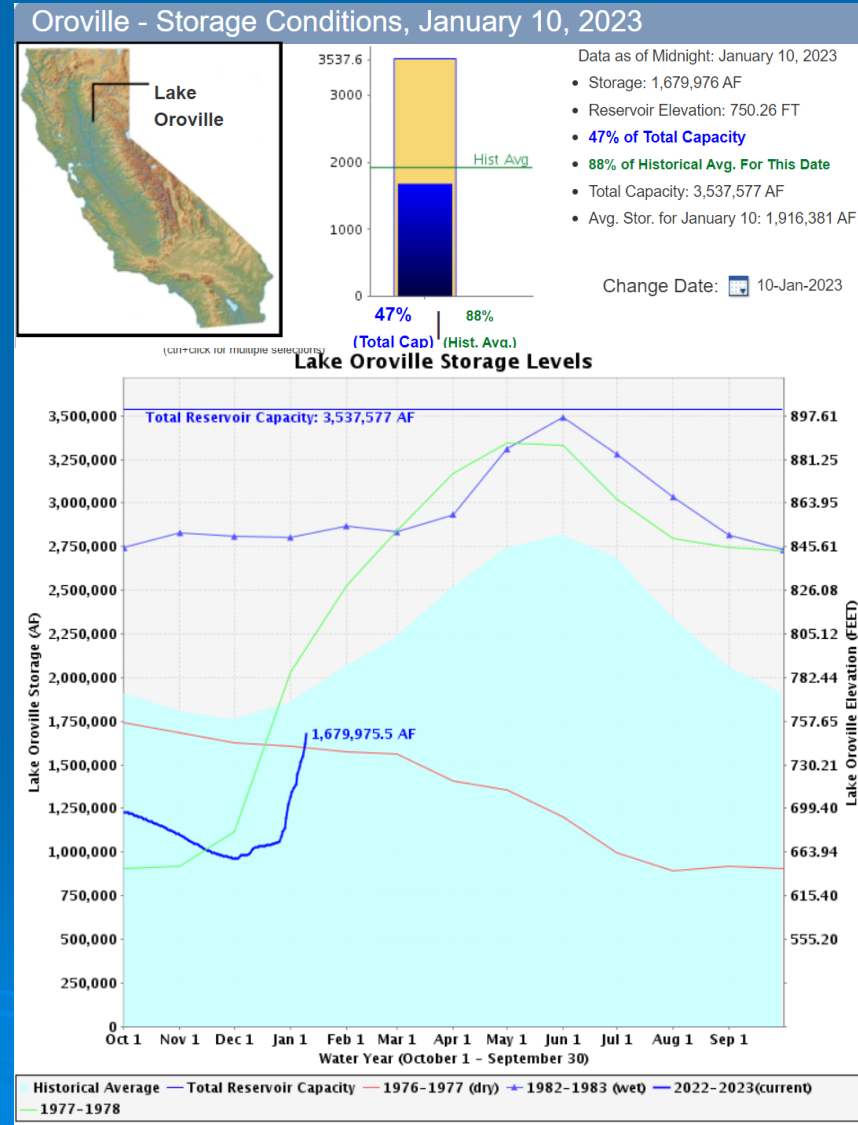
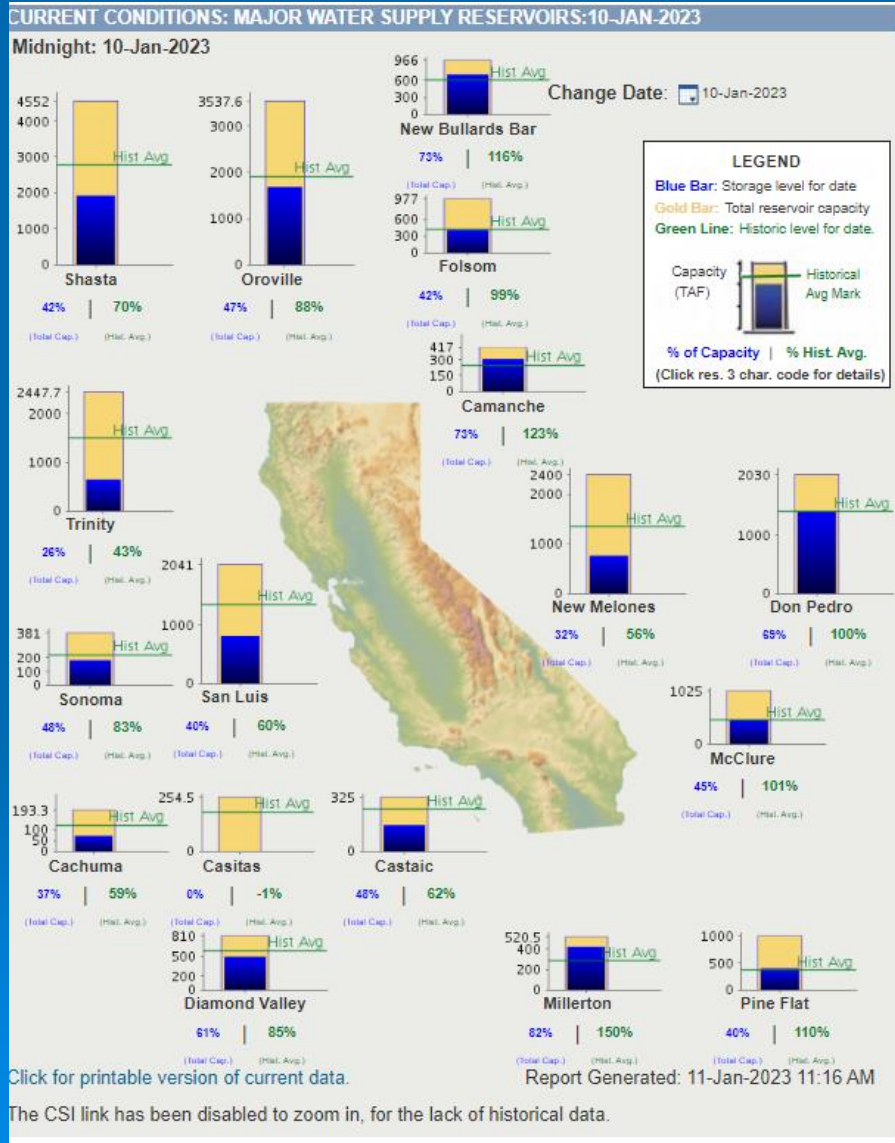


California State Water Project and Central Valley Project





California Reservoir Condition and Levels

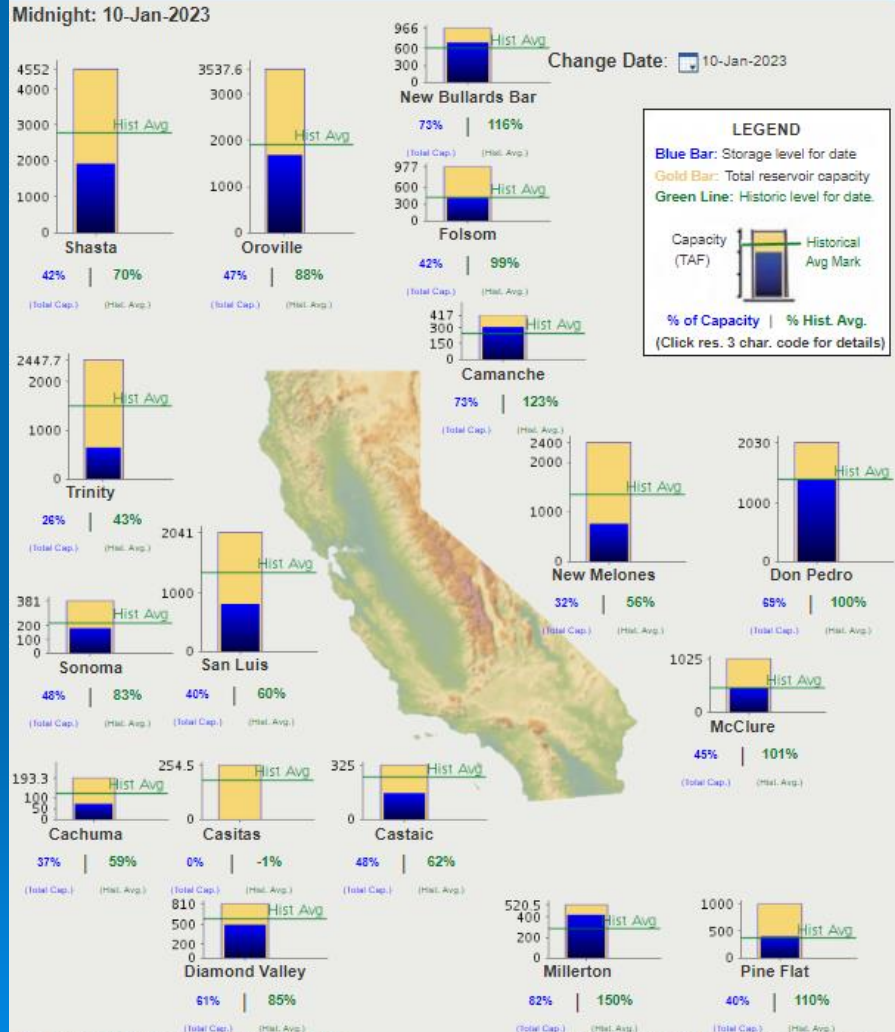


The CSI link has been disabled to zoom in, for the lack of historical data.



California Reservoir Condition and Levels

CURRENT CONDITIONS: MAJOR WATER SUPPLY RESERVOIRS: 10-JAN-2023

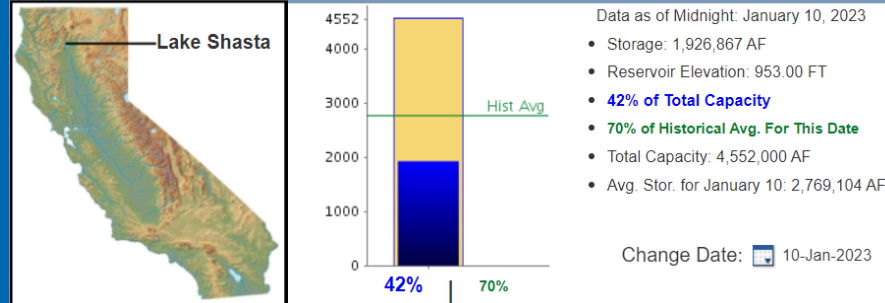


[Click for printable version of current data.](#)

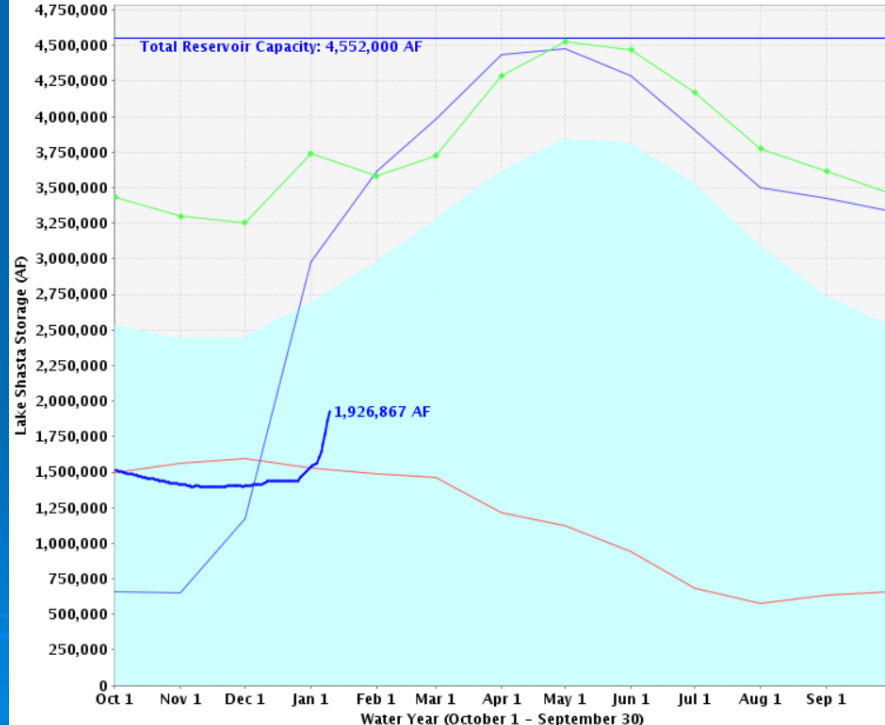
Report Generated: 11-Jan-2023 11:16 AM

The CSI link has been disabled to zoom in, for the lack of historical data.

Shasta - Storage Conditions, January 10, 2023



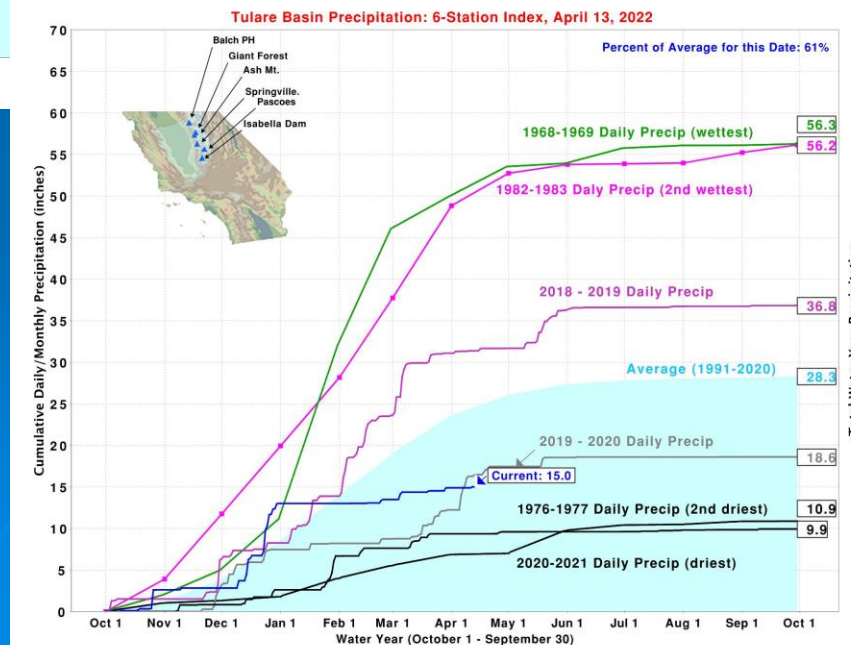
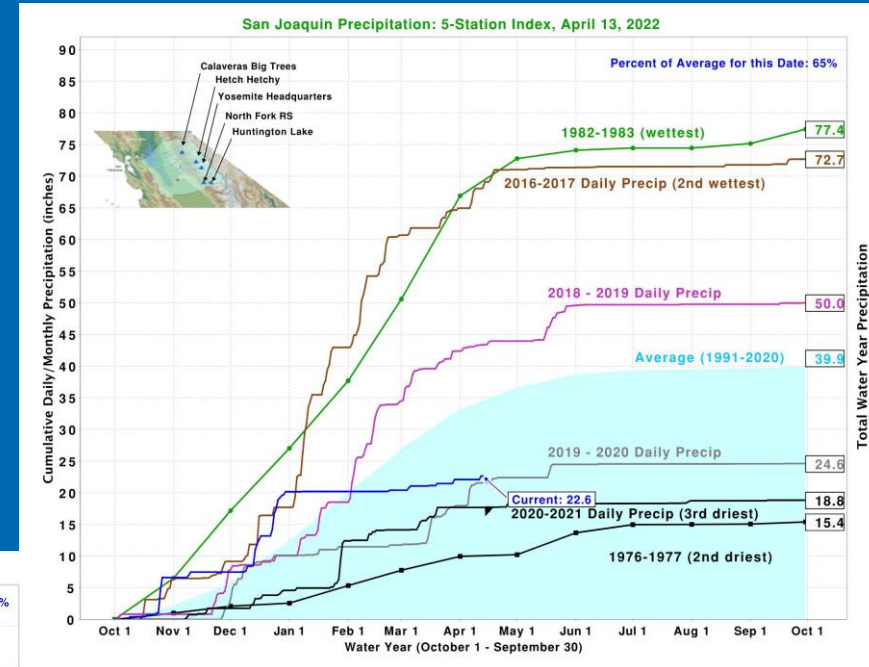
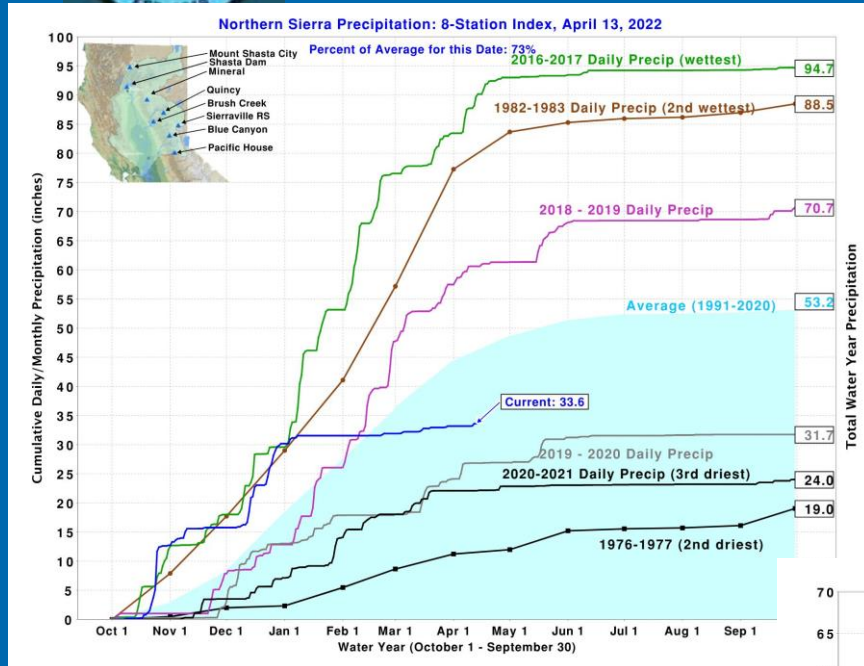
Lake Shasta Storage Levels



Historical Average — Total Reservoir Capacity — 1976-1977 (dry) — 1977-1978 — 1982-1983 (wet) — 2022-2023 (current)



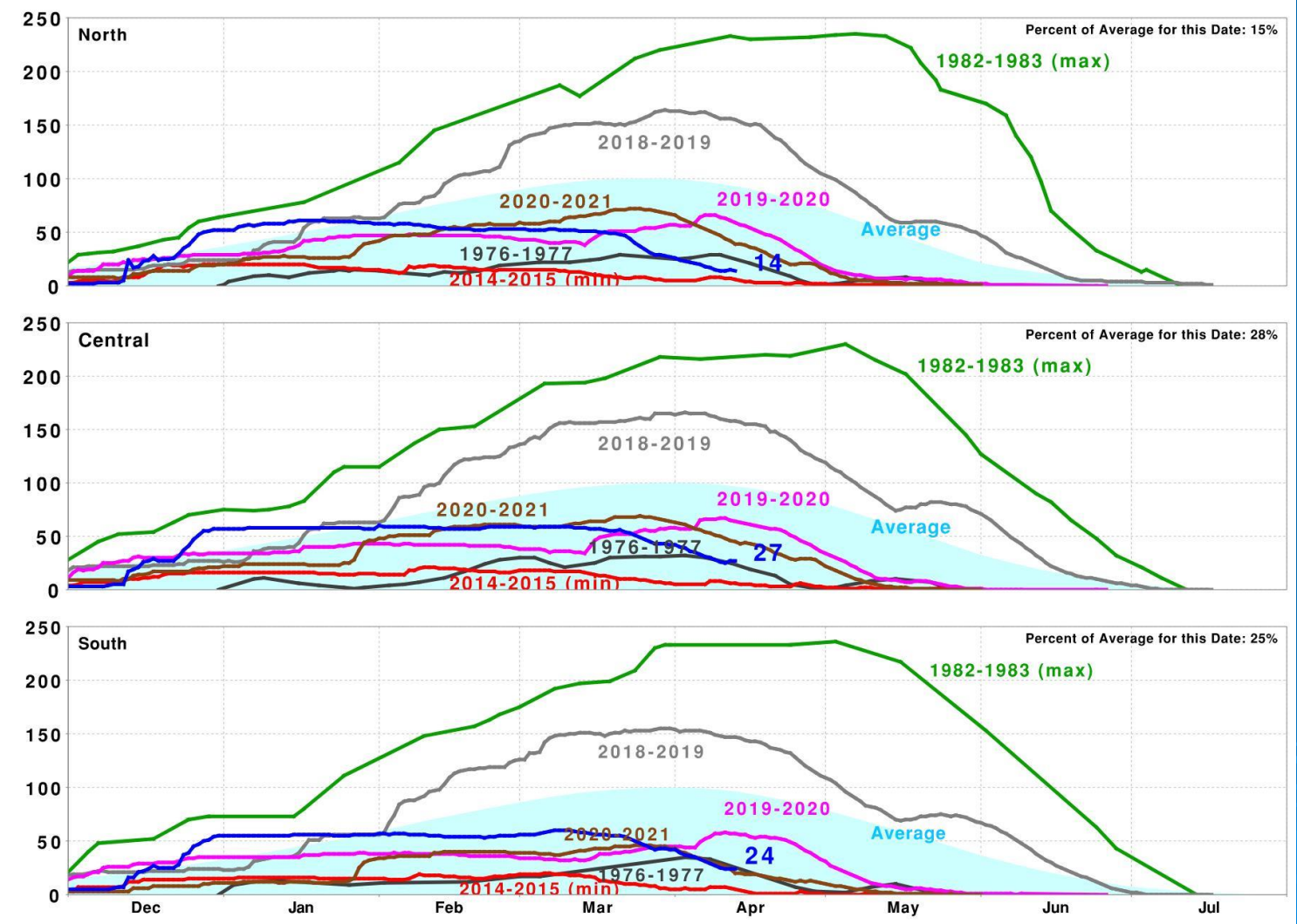
California Precipitation Plots 2022





California Snow Water Plots 2022

California Snow Water Content, April 13, 2022, Percent of April 1 Average

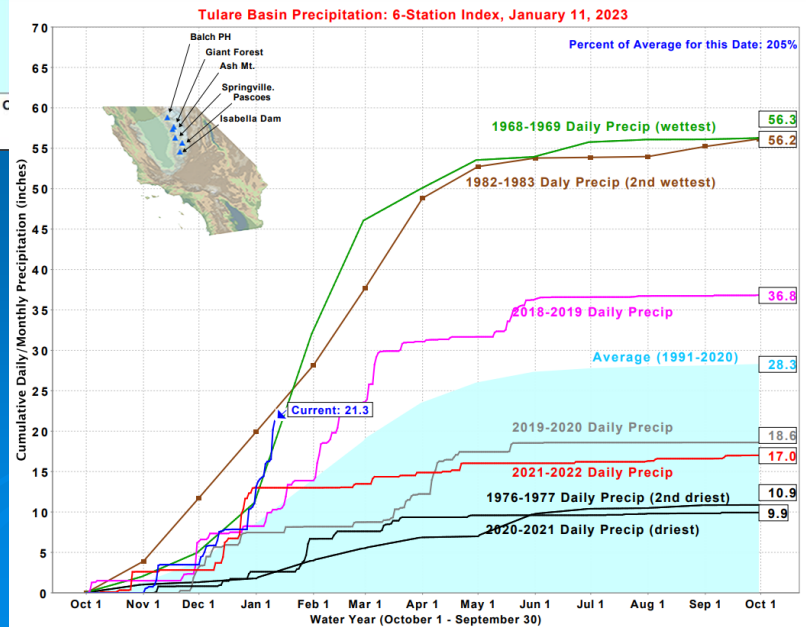
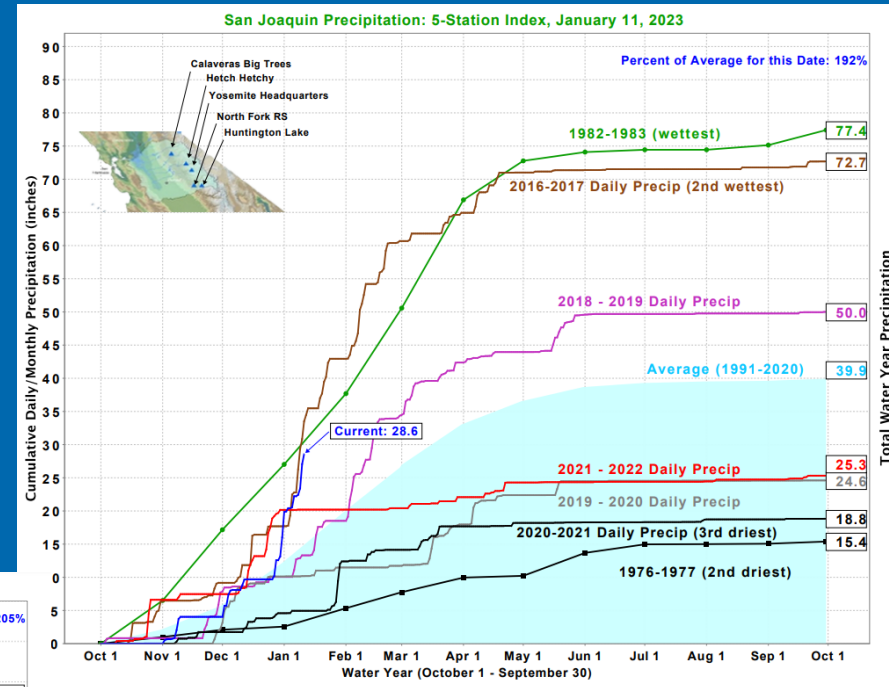
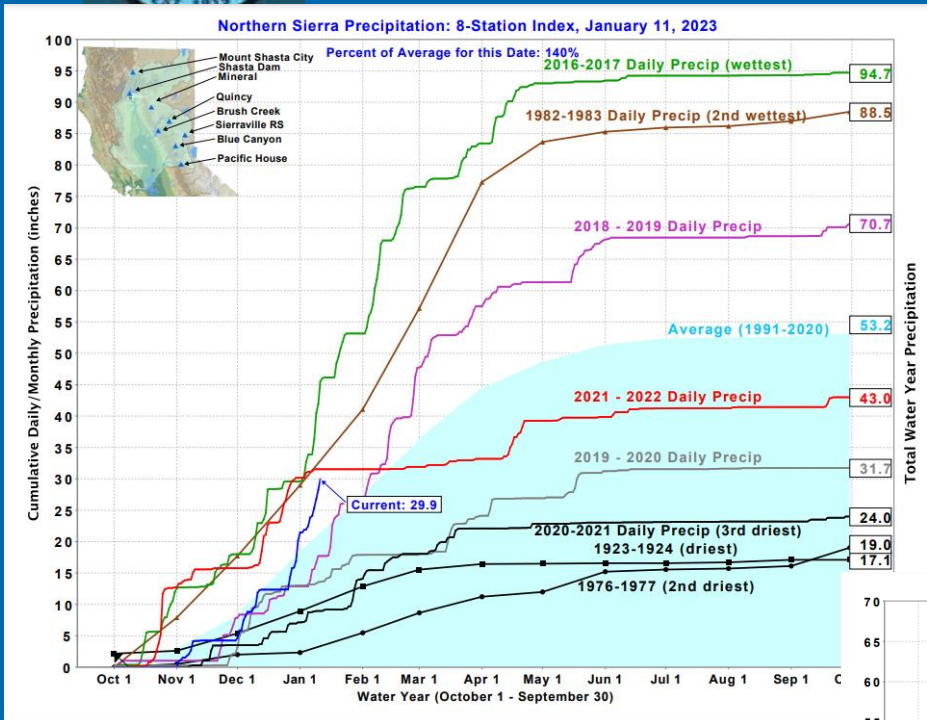


Statewide Percent of April 1: 22%

Statewide Percent of Average for Date: 23%



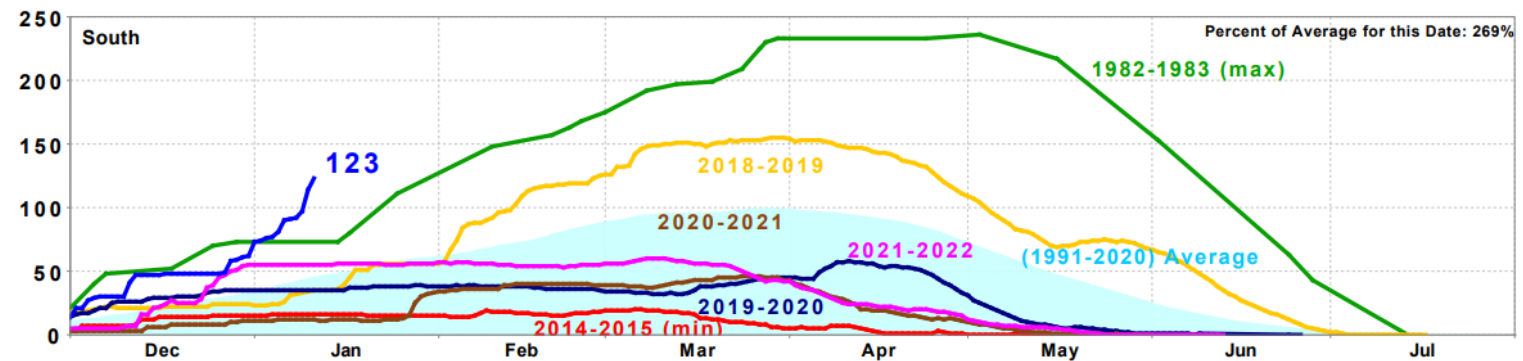
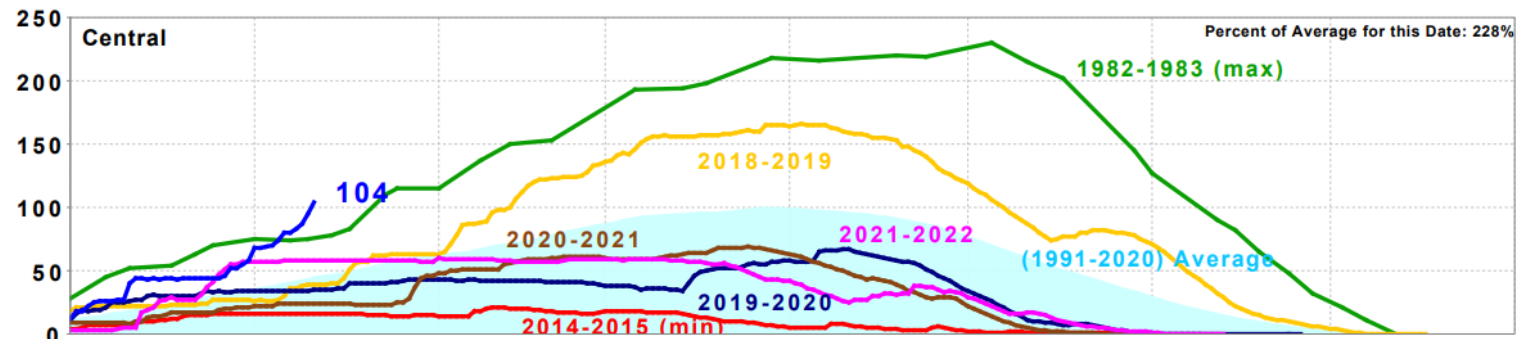
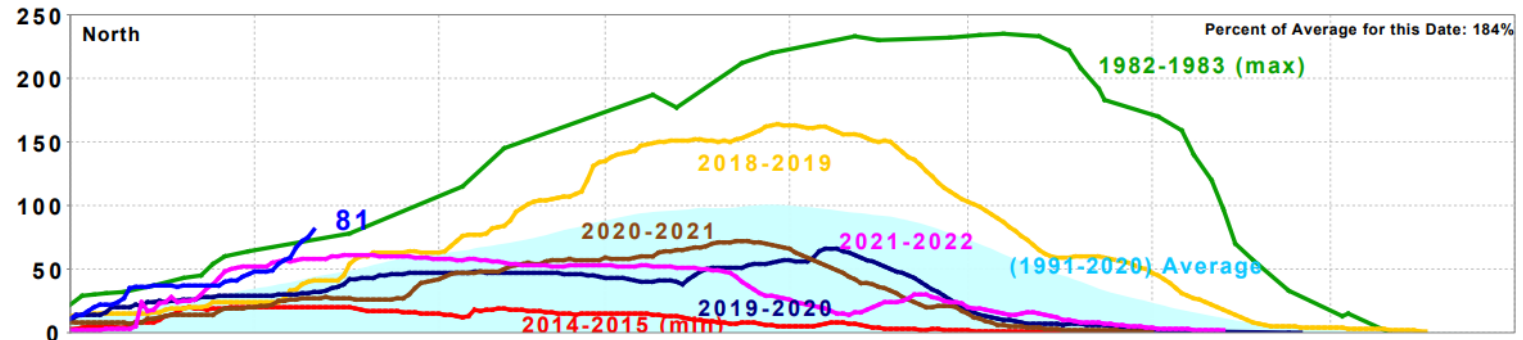
California Precipitation Plots 2023





California Snow Water Plots 2023

California Snow Water Content, January 11, 2023, Percent of April 1 Average



Statewide Percent of April 1: 102%

Statewide Percent of Average for Date: 226%



Recent Actions of SGPWA

1. SGPWA has completed 20-year water supply deal with Ventura that provides 3 stages of access to the City of Ventura's 10,000 AF SWP Table A Supply (Deal Signed by DWR on December 29, 2022)
 - a. Near term provides for up to full access to Ventura's (i.e. 50% Year results in 5,000 AF availability (next 5 or so years)
 - b. Longer Term, Ventura reserves approximately 1,500 AF for use (when SWP pipeline is constructed to Ventura – Future Ventura facility)
2. Results of this action provide for possible Supplies as Follows:
 - a. SGPWA Table A 17,300 AF (Actual Supply Per SWP Allocation)
 - b. Ventura Table A Access 10,000 AF (Actual Supply Per SWP Allocation)
 - c. Nickel Water 1,700 AF
 - d. Yuba Water Exchange 200 AF

Possible Maximum Total 29,200 AF (in 100% Year)



Possible Effects of Additional Supply

SWP % Water Supply Available: 25%

	(100%) AF	Table A AF
SGPWA Table A	17,300	4,325
Ventura Table A	10,000	2,500
SubTotal:		6,825

Nickel	1,700	1,700
Yuba	200	200
SubTotal:		1,900

Total Possible Supply: 8,725 AF

SWP % Water Supply Available: 50%

	(100%) AF	Table A AF
SGPWA Table A	17,300	8,650
Ventura Table A	10,000	5,000
SubTotal:		13,650

Nickel	1,700	1,700
Yuba	200	200
SubTotal:		1,900

Total Possible Supply: 15,550 AF

SWP % Water Supply Available: 75%

	(100%) AF	Table A AF
SGPWA Table A	17,300	12,975
Ventura Table A	10,000	7,500
SubTotal:		20,475

Nickel	1,700	1,700
Yuba	200	200
SubTotal:		1,900

Total Possible Supply: 22,375 AF



BCVWD and SGPWA SWP Deliveries

Table 2 – Historical Deliveries of SPW to SGPWA and BCVWD

Calendar Year	Total SGPWA Deliveries, acre-ft (1)	BCVWD Deliveries, acre-ft (2)	BCVWD % of SGPWA Deliveries	DWR Allocation %
2003	116			90
2004	814			65
2005	687			90
2006	4,420	3,501	79.2	100
2007	4,815	4,501	93.5	60
2008	4,905	2,399	48.9	35
2009	6,609	2,741	41.4	40
2010	8,403	5,727	68.1	50
2011	10,730	7,979	74.4	80
2012	10,974	7,783	70.9	65
2013	9,695	7,434	76.7	35
2014	5,131	4,405	85.9	5
2015	3,930	2,773	70.6	20
2016	11,461	9,319	81.3	60
2017	15,843	13,590	85.8	85
2018	13,174	12,121	92.0	35
2019	14,152	13,645	96.4	75
2020	11,469	11,005	96.0	15
Total	133,479	108,892		

Sources: (1) Report on Water Conditions, Reporting Period 2018, SGPWA, (2) 2019 Draft Beaumont Basin Watermaster Annual Report, (3) 2020 Draft Beaumont Basin Watermaster Annual Report



Summary of Observations and Discussion

1. BCVWD Management is cautiously optimistic about 2023 water supply's
2. DWR needs to maximize opportunities for delivery and management reference the following letters (handouts)
 - a. DWR Director Karla Nemeth Letter to State Water Contractors sent January 6, 2023
 - b. 16th Senator Melissa Hurtado to Gavin Newsom Dated January 10, 2023
3. California as a whole should lobby to ensure water supply in 2023 is maximized.
4. BCVWD will continue to watch and report on the ongoing water supply issues



Discussion /
Questions?

