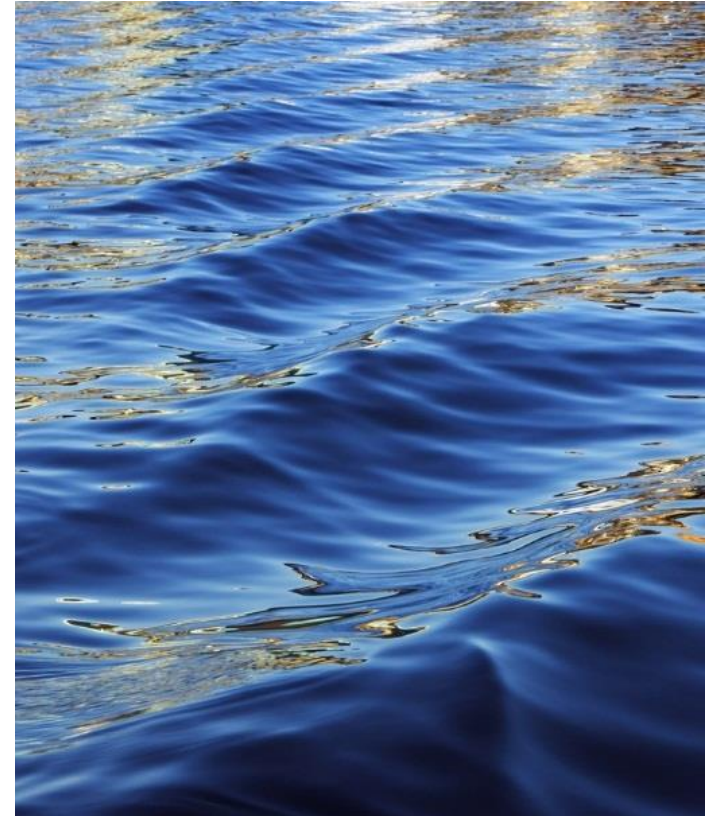


# MDP Line 16 Construction Update

## Joint Storm Water Capture / Flood Control Project

January 26, 2023



**Beaumont-Cherry Valley Water District**

Proudly Serving the City of Beaumont and Community of Cherry Valley for Over 100 Years

# MDP Line 16 – Master Drainage Plan Line 16

## PROJECT OBJECTIVE/SUMMARY

- STORM WATER CONVEYANCE FACILITY TO PROMOTE WATER CONSERVATION AND GROUNDWATER RECHARGE
- JOINT PROJECT BETWEEN RIVERSIDE COUNTY FLOOD CONTROL & WATER CONSERVATION DISTRICT (FLOOD CONTROL) AND BCVWD
- CONVEYANCE MECHANISM IS A NEW STORM DRAIN (24” – 84” DIAMETER) WITH CATCH BASINS
  - APPROXIMATELY 6,600 LF OF STORM DRAIN
- GROUNDWATER RECHARGE MECHANISM IS BCVWD’S NOBLE CREEK RECHARGE FACILITY – PHASE II (NCRF PH II)
- 10-YEAR STORM DRAIN FACILITY TO CONVEY LOCAL RUNOFF TO BCVWD NCRF PH II
- ALIGNMENT LOCATED WITHIN GRAND AVENUE (CHERRY VALLEY) FROM BELLFLOWER TO BCVWD NCRF PH II
- HELP OFFSET DEPENDENCY ON IMPORTED WATER FOR THE RATEPAYERS WITHIN BCVWD
  - PROJECT MAY CAPTURE UP TO 500 ACRE-FEET/YEAR (AFY)
- IMPROVE WATER QUALITY WITHIN THE LINE 16 WATERSHED

# MDP Line 16 – Master Drainage Plan Line 16

## PROJECT CONSTRUCTION STATUS

### CONSTRUCTION TASKS UNDERWAY:

- CONSTRUCTION OF STORM DRAIN INLET STRUCTURE AT BCVWD NOBLE CREEK RECHARGE FACILITIES, PHASE II (NCRF PHASE II)
- CONSTRUCTION OF OUTLET STRUCTURE FROM NCRF PHASE II, POND 1 TO NOBLE CREEK CHANNEL
- CONSTRUCTION OF EMERGENCY OUTLET STRUCTURE FROM PHASE II, POND 4 TO NOBLE CREEK CHANNEL
- CONSTRUCTION OF CONCRETE SPILLWAYS BETWEEN PONDS 1 & 2, 2 & 3, AND 3 & 4

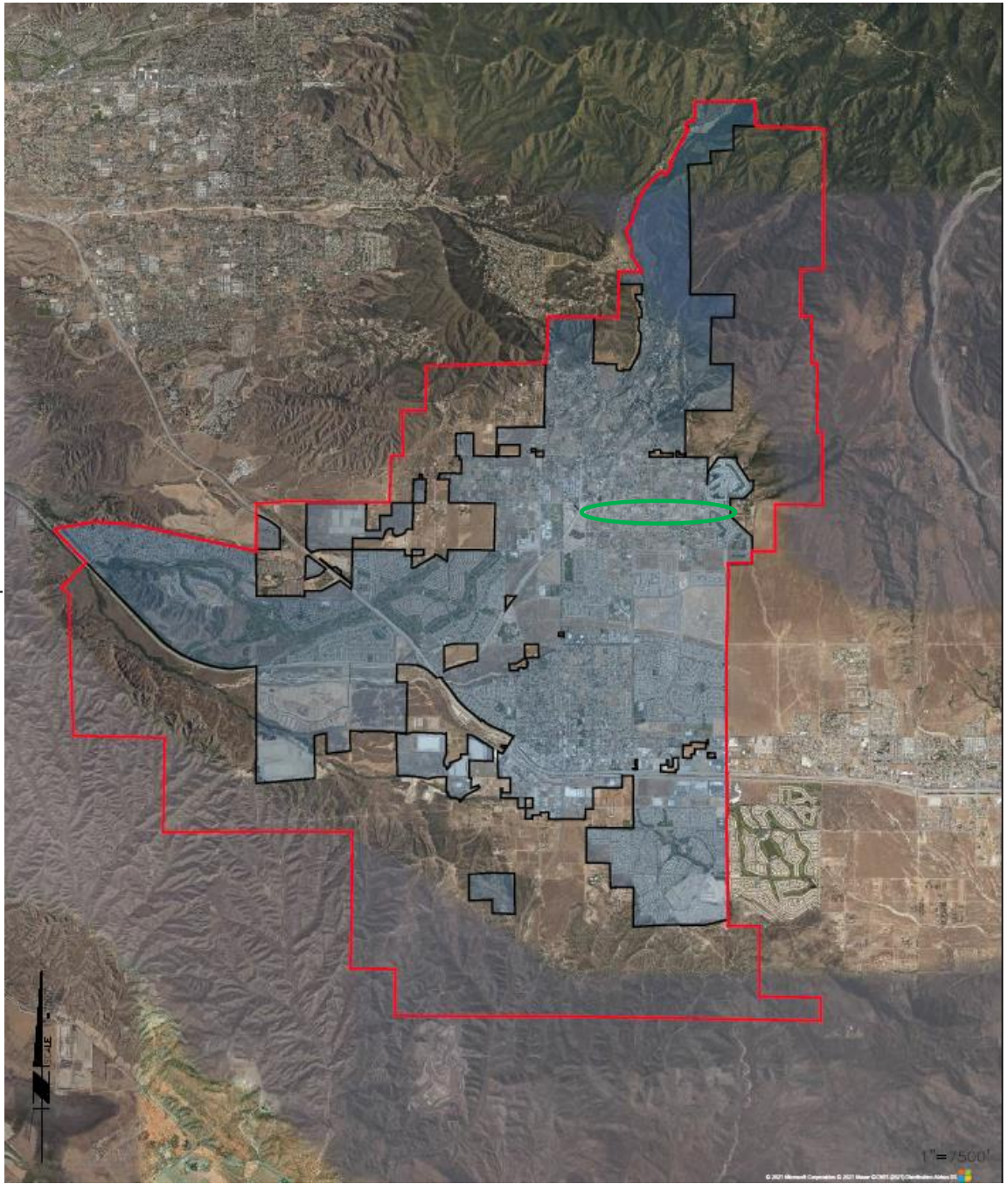


BEAUMONT CHERRY VALLEY  
WATER DISTRICT

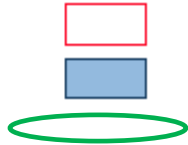
---

SERVICE BOUNDARY AND SPHERE OF  
INFLUENCE

MDP LINE 16 PROJECT VICINITY



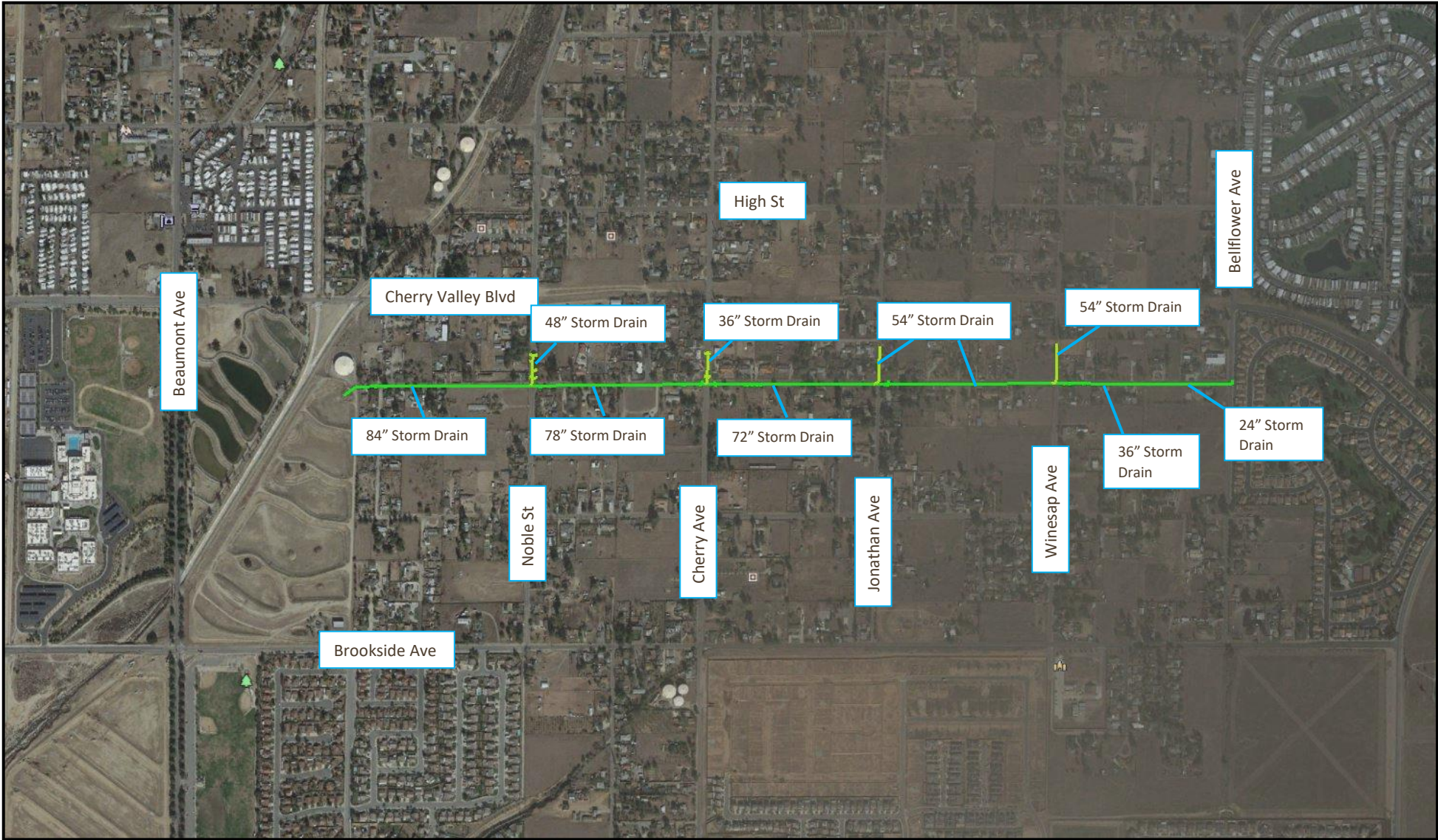
SPHERE OF INFLUENCE  
SERVICE BOUNDARY  
LOCATION OF PROJECT





# MDP Line 16 – Master Drainage Plan Line 16

## PROJECT LOCATION





# Noble Creek Recharge Facility – Phase II





# Noble Creek Recharge Facility – Phase II

## Pond 1 Outlet to Noble Creek



\*January 2023



# Noble Creek Recharge Facility – Phase II

## 84" Inlet Structure to Pond 1





# Noble Creek Recharge Facility – Phase II

## 84" Inlet Structure to Pond 1





# Noble Creek Recharge Facility – Phase II

## Spillway #1





# Noble Creek Recharge Facility – Phase II

## Spillway #1 (Left) and Spillway #2 (Right)





# Noble Creek Recharge Facility – Phase II

## Spillway #2





# Noble Creek Recharge Facility – Phase II

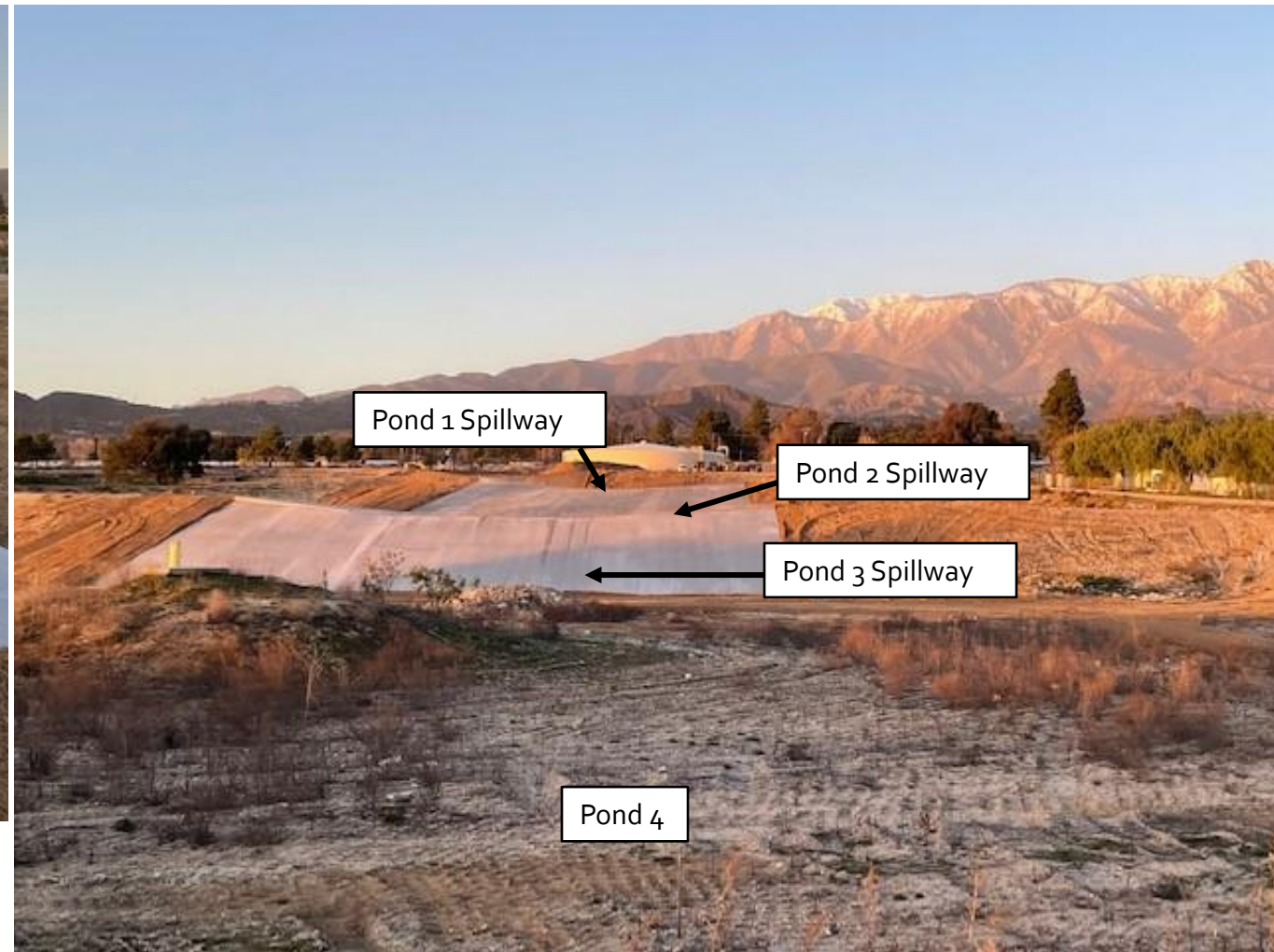
## Pond 3 Spillway





# Noble Creek Recharge Facility – Phase II

## Spillway #3





## Noble Creek Recharge Facility – Phase II Pond 4 Emergency Outlet to Noble Creek





## Noble Creek Recharge Facility – Phase II Aerial Image – January 25, 2023





## MDP Line 16 – Brookside Avenue Runoff (January 5, 2023)





# Questions

